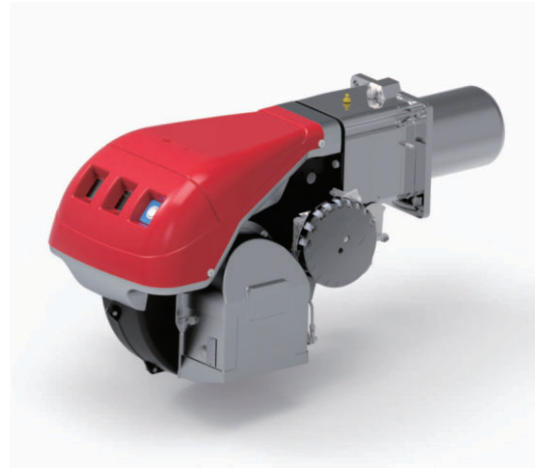


# WS 70-250/E MZ

## Characteristics

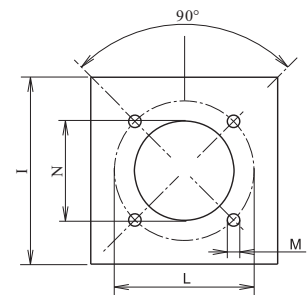
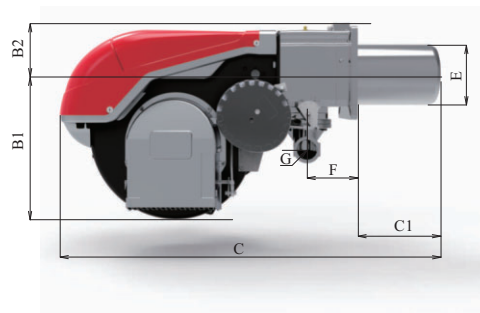
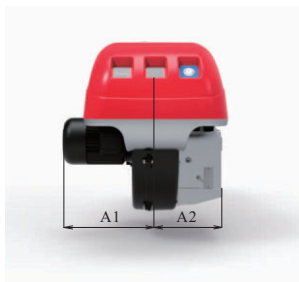
- Electronic modulating gas burner.



Power kW	Model	Article No.	Powe supply	Motor power kW	Package size LxPxH(mm)	Weight kg
192/465~814	WS 70/E MZ	101 007 013	230V 50Hz	1.1	1300x740x682	70
232/698~1163	WS 100/E MZ	101 007 014	230V 50Hz	1.5	1300x740x682	73
372/930~1512	WS 130/E MZ	101 007 015	230V 50Hz	2.2	1300x740x682	76
300/900~2290	WS 150/E MZ	101 007 016	230V 50Hz	3.0	1400x700x650	85
470/1279~1850	WS 190/E MZ	101 007 017	230V 50Hz	4.5	1400x1000x650	87
600/1250~2650	WS 250/E MZ	101 007 018	230V 50Hz	5.5	1400x1000x650	89

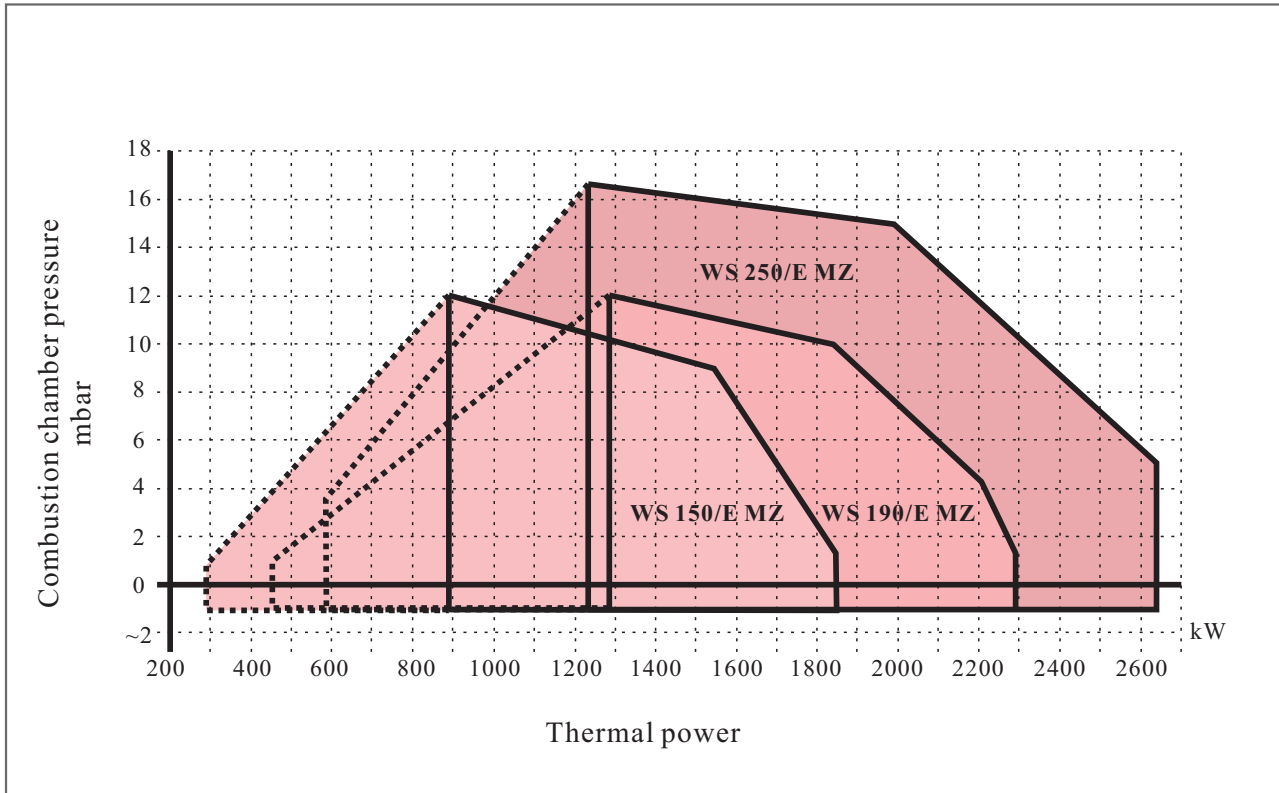
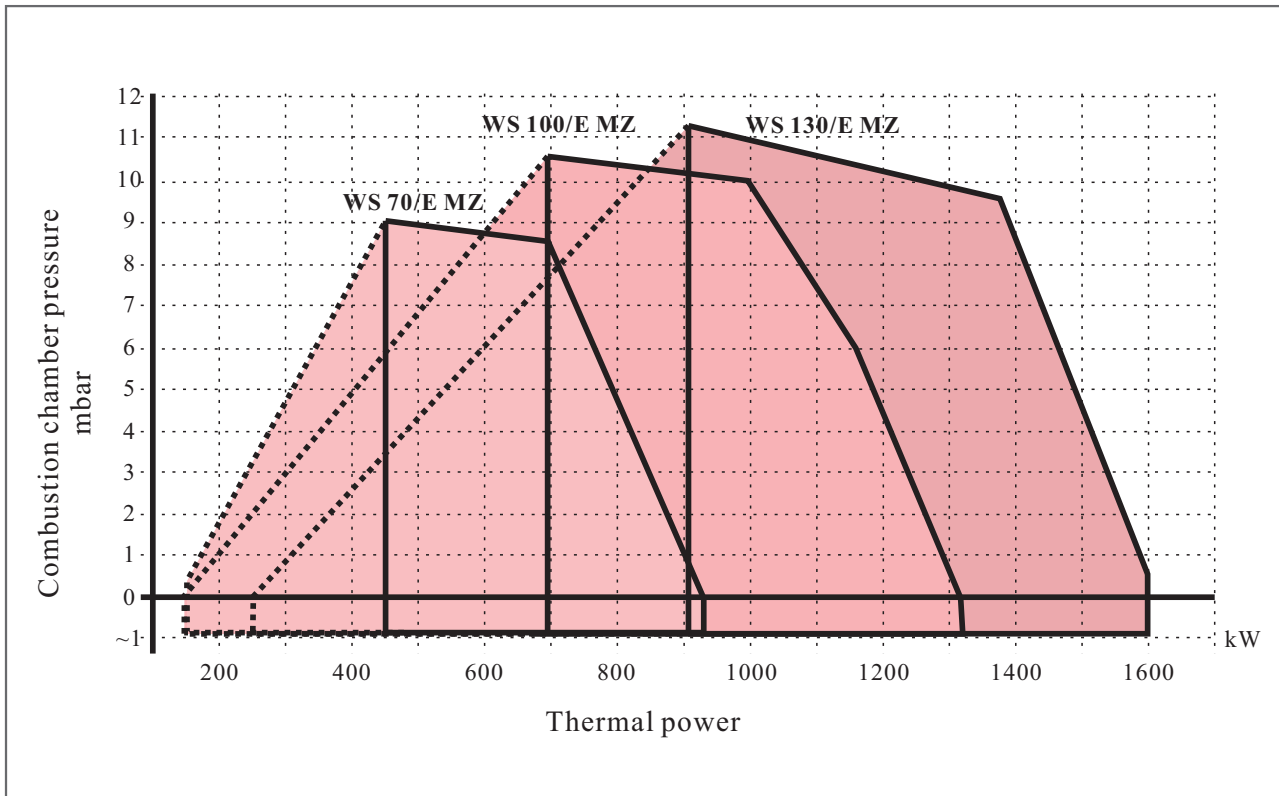
\*60 Hz can be cusomized

## Size



Model	A1	A2	B1	B2	C	C1	E	F	G	I	L	M	N
	mm	mm	mm	mm	mm	mm	Φmm	mm	mm	mm	Φmm	M	Φmm
WS 70/E MZ	297	216	428	154	1095	248	179	136	Rc2"	265	275~325	4*M12	190
WS 100/E MZ	297	216	428	154	1095	248	179	136	Rc2"	265	275~325	4*M12	190
WS 130/E MZ	350	216	428	154	1123	276	189	136	Rc2"	265	275~325	4*M12	190
WS 150/E MZ	370	305	435	165	1127	280	189	136	Rc2"	265	275~325	4*M12	190
WS 190/E MZ	402	306	435	165	1250	372	222	150	Rc2"	320	305~368	4*M16	240
WS 250/E MZ	413	306	435	165	1250	372	222	150	Rc2"	320	305~368	4*M16	240

**Firing Rates**



Useful firing rates for choosing the burner

Modulation range

Test condition conforming to en676

Temperature: 20°C

Pressure: 1013.5

Mbar altitude: 0 m a.s.l