

Ventilated | Low speed | Benchtop

# TD-400

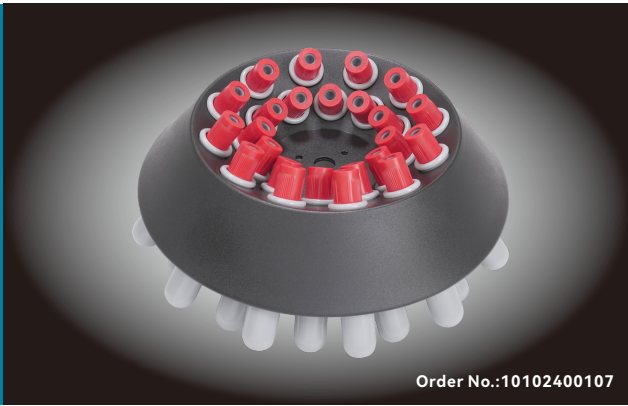


Order No.:010000400

The TD-400 is a small centrifuge with a fixed angle rotor that has been developed specifically for use in clinical settings. It can centrifuge 24 blood tubes up to 10 ml in volume at a maximum speed of 4,200 RPM / 2,680 RCF.

## Features

- >LED screen shows RPM/RCF and Time
- >RCF can be set directly
- >1min to 99min timer range
- >User can reset parameters when rotor is spinning
- >Variable frequency motor drive
- >Electronic door lock to ensure safety
- >Steel housing;304 stainless steel chamber
- >Autoclavable aluminum alloy fixed angle rotor
- >Compatible with 13mm and 16mm blood tubes
- >Can run 24 tubes at a time



Order No.:10102400107

## TECHNICAL DATA

Model	TD-400
Max Speed	4200rpm
Max RCF	2680xg
Max Capacity	24x10ml blood tube
Speed Accuracy	±20rpm
Time Setting	1min ~ 99min
Noise	≤60dB(A)
Power Consumption	250w
Dimension	410x300x260mm
Weight	17kg