

Ventilated | Low speed | Benchtop

TD-6M



Order No.:010000601

TD-6M is a non-refrigerated large capacity centrifuge with a maximum capacity of 2L, which suitable with 0.2mL-500mL tube/bottle, standard blood tube and microplate. Also provide the rotor with biosafety cap for choice, can meet different centrifugal requirements.

FEATURES

User-friendly functions

- >12 user-defined programs
- >19 rates acceleration and deceleration
- >1m to 9999min59s timer range
- >LCD screen shows all parameters simply and clearly
- >RCF can be set directly
- >RPM and RCF covert automatically
- >User can reset parameters when rotor is spinning

Ensure safety

- >Microprocessor control
- >Imbalance detection by three axis gyroscope & centrifugation stop with display of error
- >Motorized electronic door lock
- >Door cannot be opened when rotor is spinning
- >Gas hinge to prevent door falling
- >Port in the door for calibration and operation checking
- >Emergency door lock release

Good components

- >Motor: Variable frequency motor. stable running, maintenance free, long life
- >Housing: Thick and strong steel
- >Chamber: Food grade 304 stainless steel. anticorrosion and easy to clean
- >Rotor: Aluminum alloy fixed angle rotor; Steel/Stainless steel swing out rotor.
- >Rotors are autoclavable



TECHNICAL DATA

Model	TD-6M
Max Speed	6000rpm
Max RCF	5200xg
Max Capacity	4x500ml
Speed Accuracy	±10rpm

Time Setting	1m ~ 9999m59s
Noise	≤60dB(A)
Power Consumption	600w
Dimension	550x450x390mm
Weight	50kg

AVAILABLE ROTORS

No.1



Order No.:10000401000
 Rotor: Swing out rotor
 Capacity: 4×100ml
 Max speed: 5000rpm
 Max RCF: 4650×g
 Tube size: Φ38×114mm



Order No.:10000400500
 Rotor: Swing out rotor
 Capacity: 4×50ml
 Max speed: 5000rpm
 Max RCF: 4650×g
 Tube size: Φ30×116mm

No.2



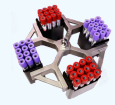
Order No.:10003200150
 Rotor: Swing out rotor
 Capacity: 32×15ml
 Max speed: 4000rpm
 Max RCF: 2980×g
 Tube size: Φ17×121mm



Order No.:10000800500
 Rotor: Swing out rotor
 Capacity: 8×50ml
 Max speed: 4000rpm
 Max RCF: 2980×g
 Tube size: Φ30×116mm

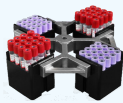


Order No.:10000801000
 Rotor: Swing out rotor
 Capacity: 8×100ml
 Max speed: 4000rpm
 Max RCF: 2980×g
 Tube size: Φ38×114mm



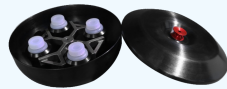
Order No.:10004800077
 Rotor: Swing out rotor
 Capacity: 48×2~7ml blood tube
 Max speed: 4000rpm
 Max RCF: 3100×g
 Tube size: Φ13×75~100mm

No.2



Order No.:10006400077
 Rotor: Swing out rotor
 Capacity: 64×2~7ml blood tube
 Max speed: 4000rpm
 Max RCF: 3100×g
 Tube size: Φ13×75~100mm

No.3



Order No.:10000402500
 Rotor: Swing out rotor
 Capacity: 4×250ml
 Max speed: 5000rpm
 Max RCF: 5200×g
 Tube size: Φ63×111mm

	Capacity	Order No.
a	8×50ml	10200800502
d		
a	4×100ml	10200401000
p	36×10ml	10203600100
t	40×7ml blood tube	10204000077
e		
r	20×15ml	10202000150

No.4



Order No.:10000600024
 Rotor: Microplate rotor
 Capacity: 2×3×96 well plate
 Max speed: 4000rpm
 Max RCF: 1970×g
 max: 128×87×60mm

No.5



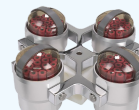
Order No.:10000405000
 Rotor: Swing out rotor
 Capacity: 4×500ml
 Max speed: 4000rpm
 Max RCF: 3400×g
 Tube size: Φ80×137mm



Order No.:10201600500(normal)
Order No.:10201600501(aerosol tight)
 Adapter in 4*500ml(normal)
 Adapter in 4*500ml(aerosol tight)
 Capacity: 16×50ml
 Max speed: 4000rpm
 Max RCF: 3400×g
 Tube size: Φ29×116mm



Order No.:10203600150(normal)
Order No.:10203600151(aerosol tight)
 Adapter in 4*500ml(normal)
 Adapter in 4*500ml(aerosol tight)
 Capacity: 36×15ml
 Max speed: 4000rpm
 Max RCF: 3400×g
 Tube size: Φ17×121mm



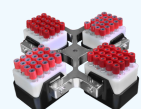
Order No.:10207600077(normal)
Order No.:10207600071(aerosol tight)
 Adapter in 4*500ml(normal)
 Adapter in 4*500ml(aerosol tight)
 Capacity: 76×2~7ml blood tube
 Max speed: 4000rpm
 Max RCF: 3400×g
 Tube size: Φ13×75~100mm



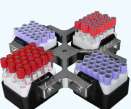
Order No.:10002000500
 Rotor: Swing out rotor
 Capacity: 20×50ml
 Max speed: 4000rpm
 Max RCF: 3400×g
 Tube size: Φ29.5×116mm



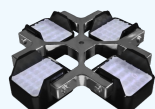
Order No.:10004000150
 Rotor: Swing out rotor
 Capacity: 40×15ml
 Max speed: 4000rpm
 Max RCF: 3400×g
 Tube size: Φ17×121mm



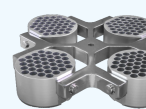
Order No.:10008000107
 Rotor: Swing out rotor
 Capacity: 80×10ml blood tube
 Max speed: 4000rpm
 Max RCF: 3400×g
 Tube size: Φ15×100mm



Order No.:10011200077
 Rotor: Swing out rotor
 Capacity: 112×2~7ml blood tube
 Max speed: 4000rpm
 Max RCF: 3400×g
 Tube size: Φ13×75~100mm



Order No.:10010000020
 Rotor: Swing out rotor
 Capacity: 100×1.5ml
 Max speed: 4000rpm
 Max RCF: 3400×g
 Tube size: Φ11×42mm

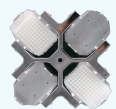


Order No.:10014800050
 Rotor: Swing out rotor
 Capacity: 148×5ml RIA tube
 Max speed: 4000rpm
 Max RCF: 3400×g
 Tube size: Φ13×75~100mm

No.5



Order No.:10009600077
 Rotor: Swing out rotor
 Capacity: 96×2~7ml blood tube
 Max speed: 4000rpm
 Max RCF: 3400×g
 Tube size: Φ13×75~100mm

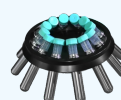


Order No.:10000800024
 Rotor: Microplate rotor
 Capacity: 4×2×96 well plate
 Max speed: 4000rpm
 Max RCF: 3400×g
 max: 128×87×60mm



Order No.:10000402502
 Rotor: Swing out rotor
 Capacity: 4×250ml conical bottom
 Max speed: 4000rpm
 Max RCF: 3400×g
 Tube size: Φ60×164mm

No.6



Order No.:10101200150
 Rotor: Fixed angle rotor
 Capacity: 12×15ml
 Max speed: 6000rpm
 Max RCF: 5120×g
 Tube size: Φ17×121mm

No.7



Order No.:10100600500
 Rotor: Fixed angle rotor
 Capacity: 6×50ml
 Max speed: 6000rpm
 Max RCF: 5120×g
 Tube size: Φ29×116mm