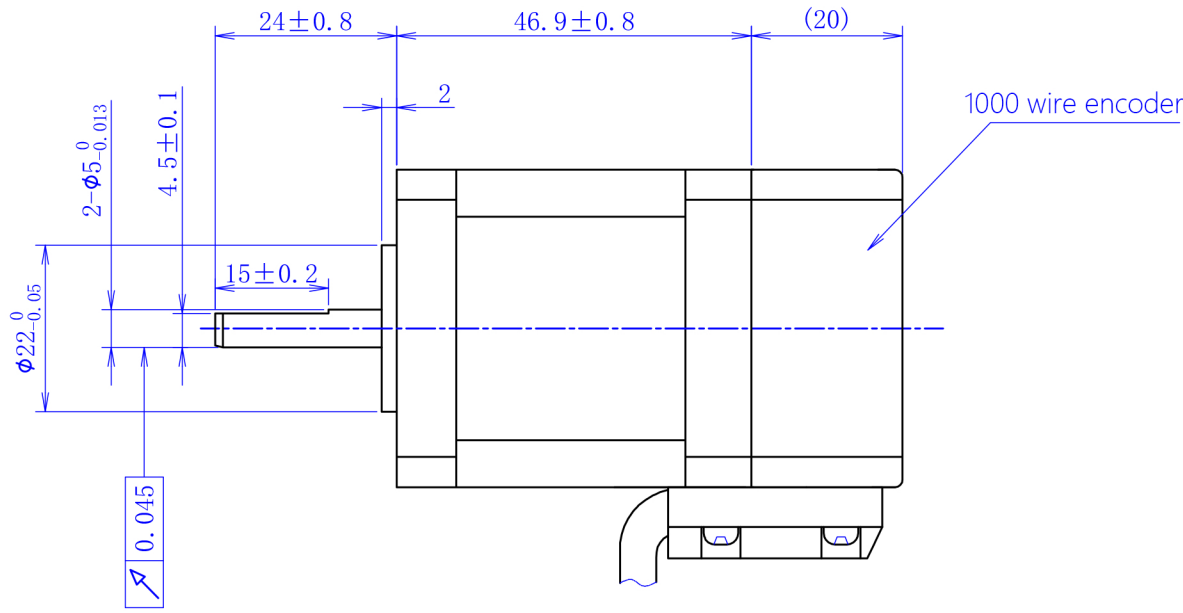
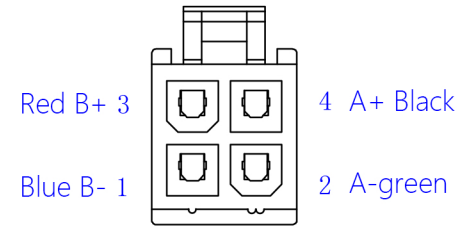


A
B
C
D
E

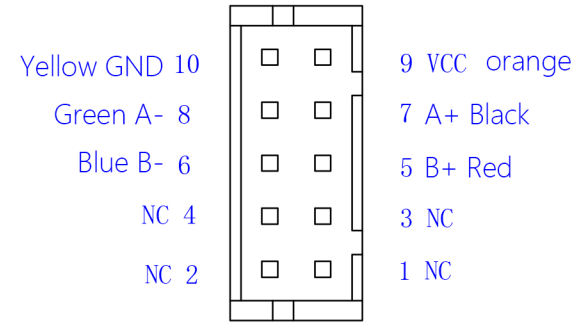


Motor line interface (P view) :

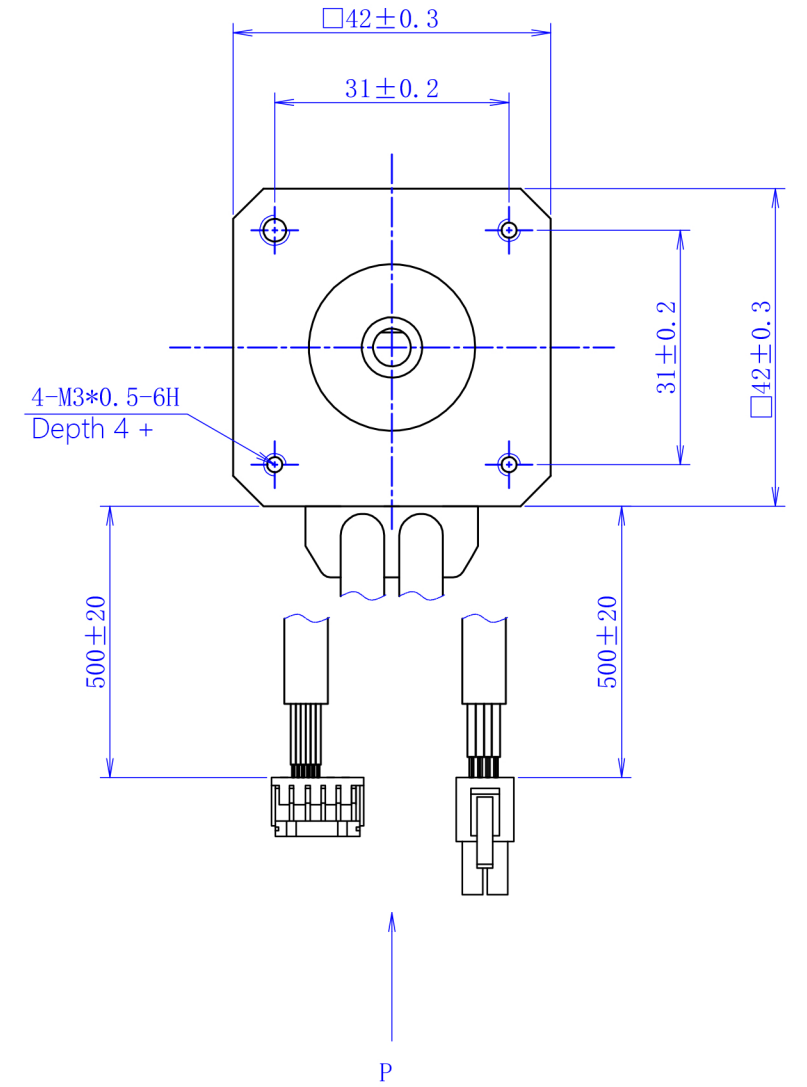


Connector : 5557 4.2mm 2x2P
Terminal : 39-00-0038

Encoder signal interface (P view) :



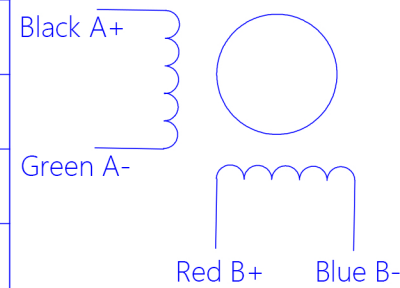
Connector : PHD-2x5P
Terminal : DF1 1 -2428SCF



Universal parameter

Step Angle	1.8°
Phase number	two phase
Insulation resistance	100MΩmin. (500V DC)
Insulation class	Class B
Insulation withstand voltage	500V A.C 1 min
Rated current	2.0A
Phase resistance	1.5Ω±15% AT25°
Phase inductance	3.1mH±20% AT 1KHz, 1Vrms
Holding torque	0.6N.m
Rotor inertia	72g.cm ²
weight	370g

Wiring diagram



一般公差 TOLERANCES (EXCEPT AS NOTES)		±0.3								KST-42D30-E-0005	
材质 MATERIAL	-----										黎明勇
表面处理 FINISH	-----		24-02-19	00初版	黎明勇						设计
制图 DRAWN	设计 DESIGNED	检图 CHECKED	确认 CHECKED	比例 SCALE	1:1	品名 TITLE	电动机规格书				备注 NOTE
凯福科技 24-02-19 黎明勇	凯福科技 24-02-19 黎明勇					图号 DWG. NO.	213-0131-0				
广东凯福电子科技有限公司 GUANGDONG KAIFULL ELECTRONIC TECHNOLOGY CO., LTD										页 SHEET	1/1