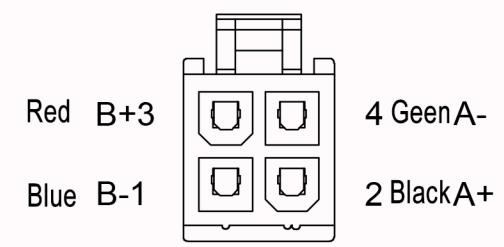
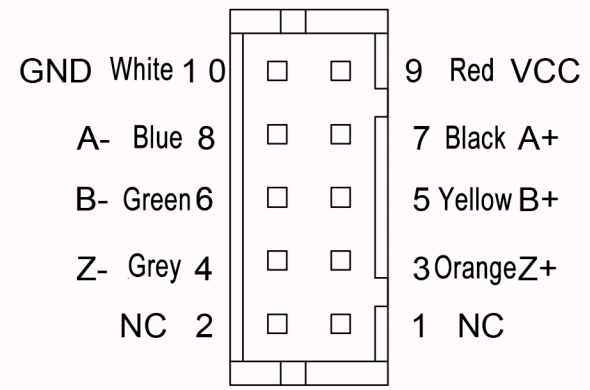


Motor line interface :

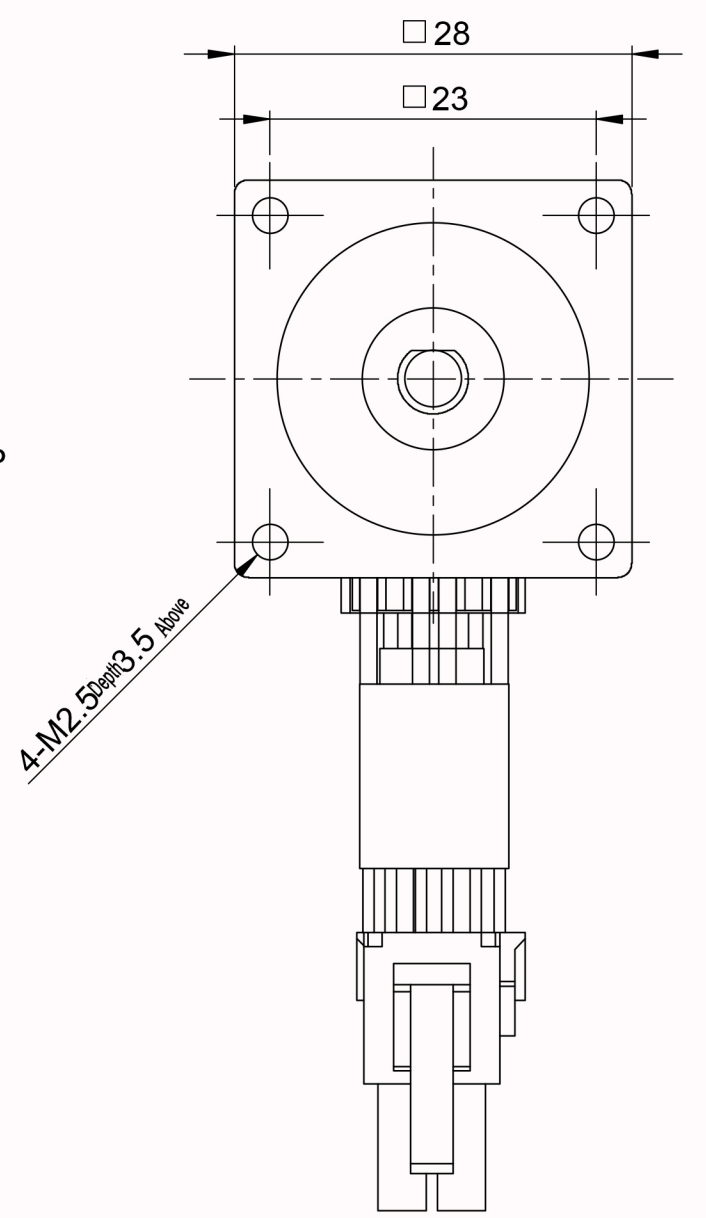


Connector : 5557 4.2mm 2 x 2P  
terminal: 39-00-0038 (Molex)

Encoder signal terminal interface :



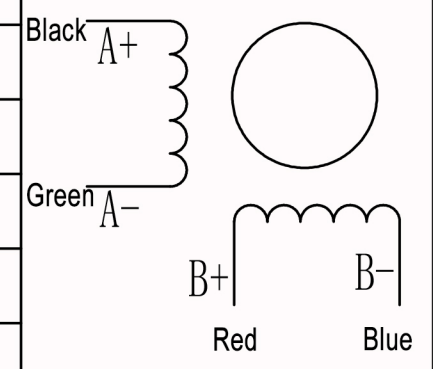
Connector : PHD-2x5P  
Terminal : DF1 1 -2428SCF



parameter

Step Angle	1.8°
Phase number	2
Insulation resistance	100MΩ min. (500V DC)
Insulation class	Class B
Moment of inertia	9g. cm <sup>2</sup>
weight	0.14kg
Driving voltage	24V
Rated current	1.0A
Phase resistance	2.1Ω ±15%
Phase inductance	1.4mH ±20%
Holding torque	50mN. m
Positioning torque	5mN. m

Wiring diagram



一般公差 TOLERANCES (EXCEPT AS NOTES)		±0.3							
材质 MATERIAL		2		23-08-22	电机特性及编码器变更	黎明勇	KST-28D18-E-0003		
表面处理 FINISH		0		23-02-17	00初版	黎明勇			
制图 DRAWN	设计 DESIGNED	检图 CHECKED	检印 CHECKED	比例 SCALE	品名 TITLE	变更事项 REVISIONS	设计 BY	备注 NOTE	
凯福科技 23-02-17 黎明勇	凯福科技 23-02-17 黎明勇			FREE	电机规格书 MOTR SPECIFICATION				
					图号 DWG. NO.	Y-23-0217-1			
广东凯福电子科技有限公司 GUANGDONG KAIFULL CO., LTD.								页 SHEET	1/1