

Product parameters:

Model: YK-R6015P-ASN-2-615

Stroke: $\pm 7.5^{\circ}$

Motor: STP-28D1012-01

Drive current: 0.7A

Screw type: Ball screw

Screw parameters: diameter 6mm/pitch 1mm

Resolution (Full/Half): $0.0106^{\circ}/0.0053^{\circ}$

Repetitive positioning accuracy: $\pm 0.01^{\circ}$

Concentricity: 0.03° (within $\pm 7.5^{\circ}$)

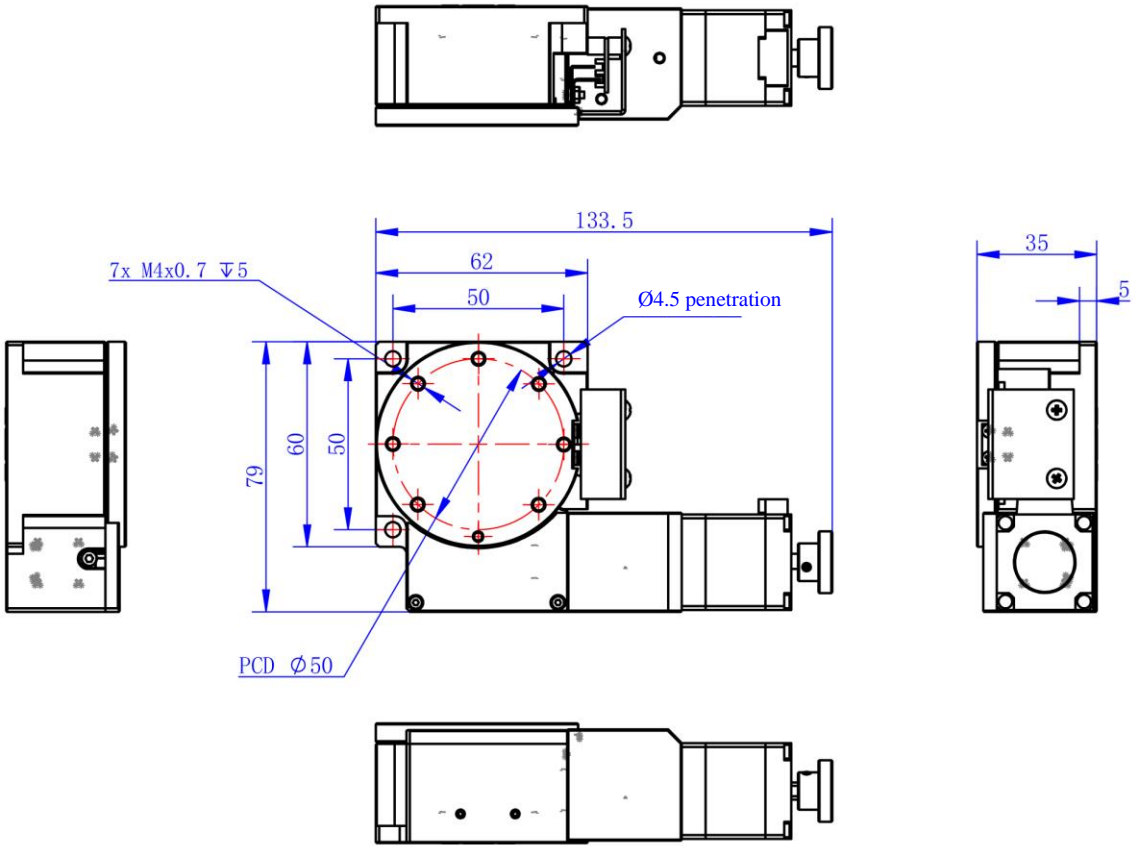
Face runout: 0.05° (within $\pm 7.5^{\circ}$)

Maximum speed: $30^{\circ}/s$

Material: Aluminum alloy

Load: 49N(5Kgf)

Weight: 0.6Kg



				YK-R6015P-ASN-2-615			
				Drawn by	Ye Zhendong	Page	1/1
				Review		Angle of view	
				Checked by		Tolerance	Unmarked tolerance grade 12
No.	Date	Change content	Designer	Guangdong Kaifull Electronics Technology Co., Ltd.			