

Product parameters:

Model: YK-L6015U-SSR-2-615

Stroke: $\pm 7.5\text{mm}$

Motor: STP-28D1012-01

Drive current: 1A

Screw type: Ball screw

Screw parameters: diameter 6mm/pitch 1mm

Resolution (Full/Half): $5\mu\text{m}/2.5\mu\text{m}$

Repetitive positioning accuracy: $\pm 1\mu\text{m}$

Positioning accuracy: $15\mu\text{m}$

Reverse gap: $2.5\mu\text{m}$

Straightness: $10\mu\text{m}$

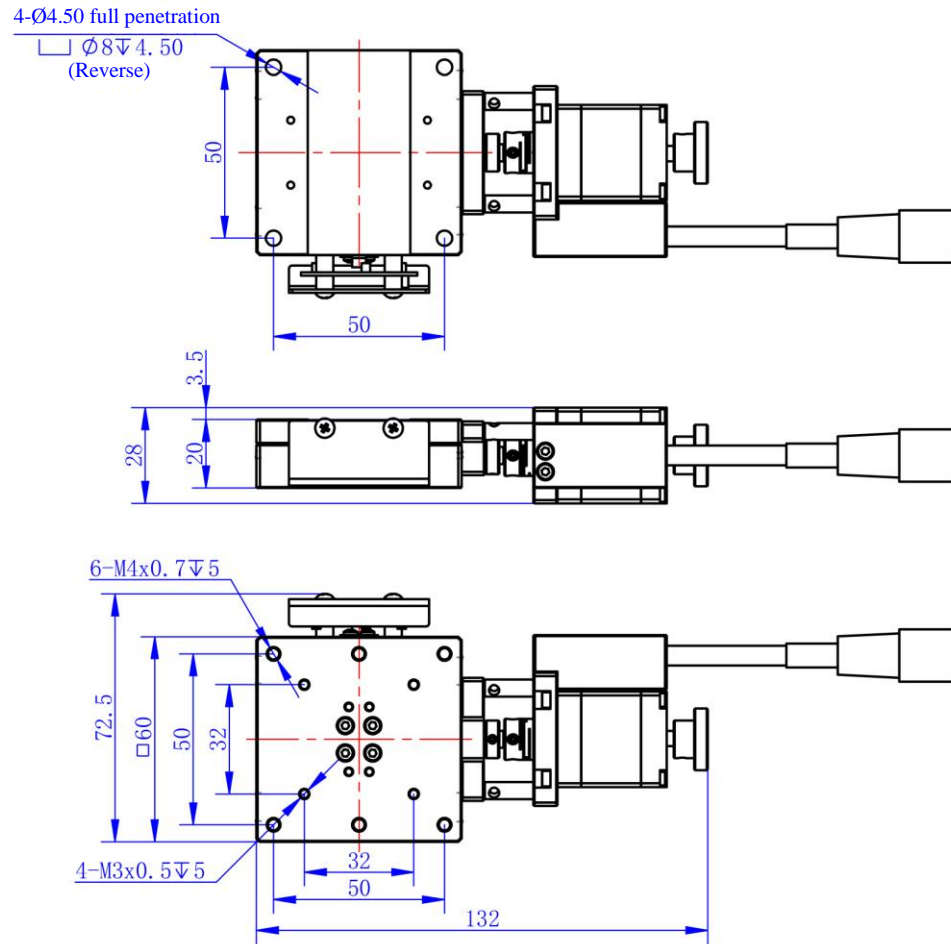
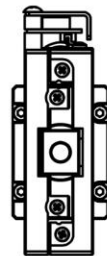
Parallelism: $20\mu\text{m}$

Maximum speed: 10mm/s

Material: SUS-440C

Load: 98N (10Kgf)

Weight:



				YK-L6015U-SSR-2-615			
				Drawn by	Ye Zhendong	Page	1/1
				Review		Angle of view	
				Checked by		Tolerance	Unmarked tolerance grade 12
No.	Date	Change content	Designer	Guangdong Kaifull Electronics Technology Co., Ltd.			