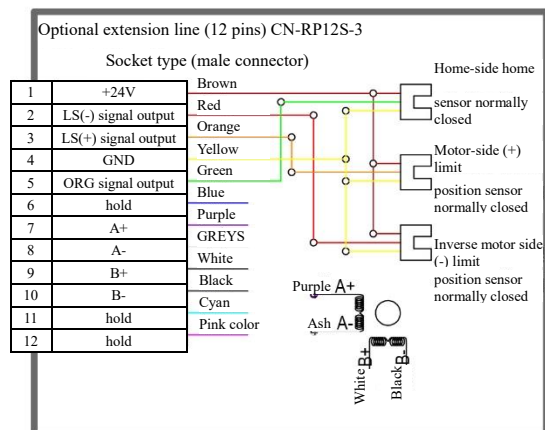


YK-L6020U-SSL-2-615 Wiring Diagram



Product parameters:

Model: YK-L6020U-SSL-2-615

Stroke:  $\pm 10\text{mm}$

Motor: STP-28D1012-01

Drive current: 0.7A

Screw type: Ball screw

Screw parameters: diameter 6mm/pitch 1mm

Resolution (Full/Half):  $5\mu\text{m}/2.5\mu\text{m}$

Repetitive positioning accuracy:  $\pm 1\mu\text{m}$

Positioning accuracy:  $15\mu\text{m}$

Reverse gap:  $2.5\mu\text{m}$

Straightness:  $10\mu\text{m}$

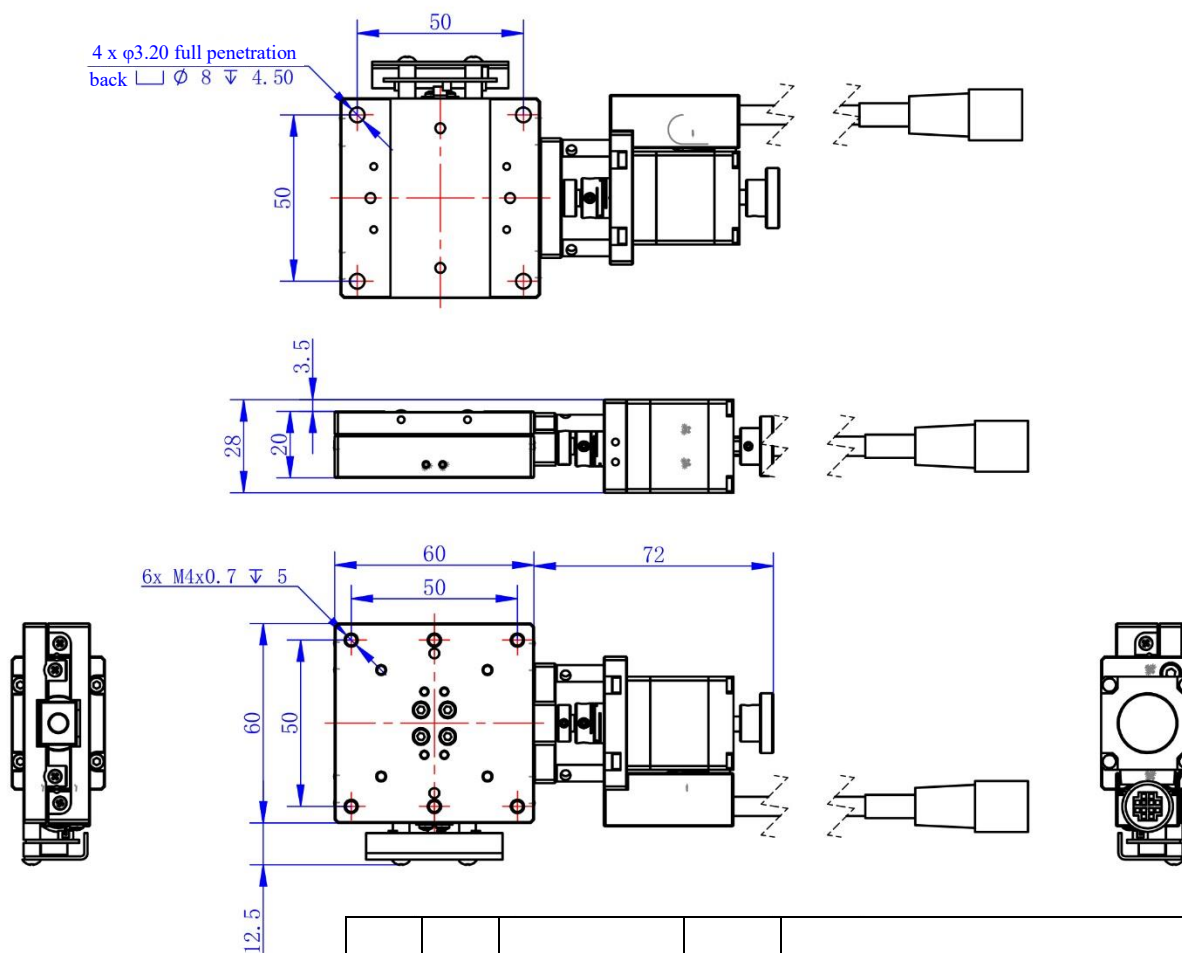
Parallelism:  $20\mu\text{m}$

Maximum speed: 10mm/s

Material: SUS-440C

Load: 98N (10Kgf)

Weight:



				YK-L6020U-SSL-2-615			
				Drawn by	Mo Dongcai	Page	1/1
				Review		Angle of view	
				Checked by		Tolerance	Unmarked tolerance grade 12
No.	Date	Change content	Designer	Guangdong Kaifull Electronics Technology Co., Ltd.			