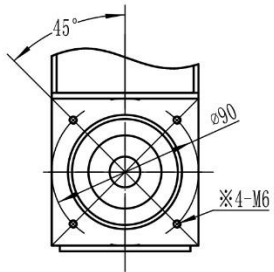
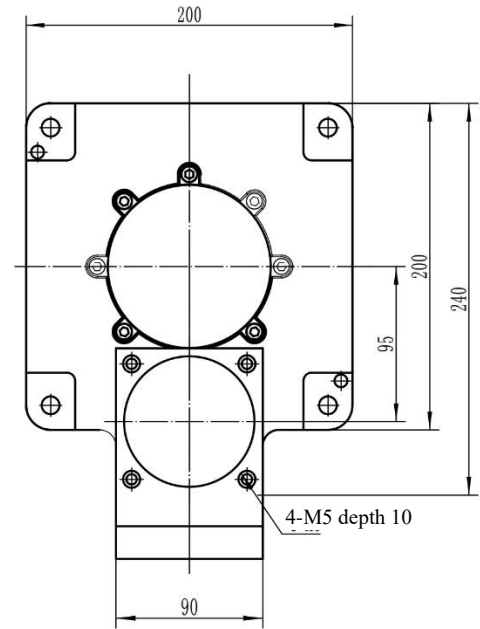
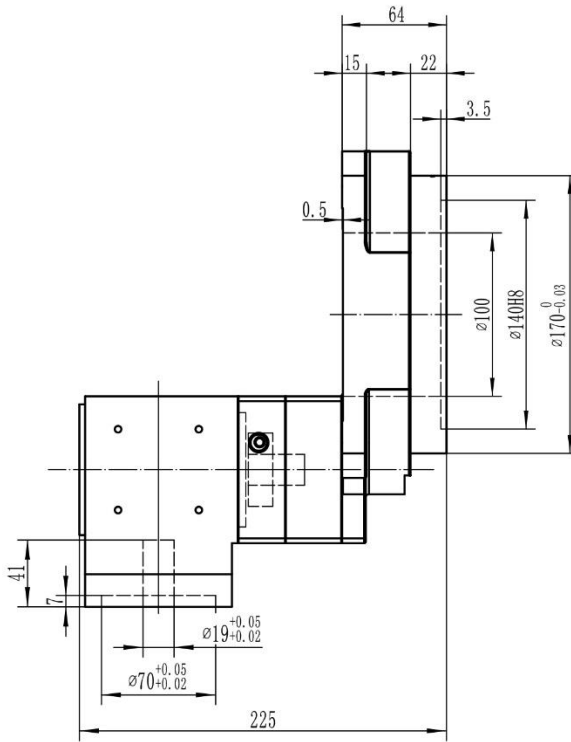
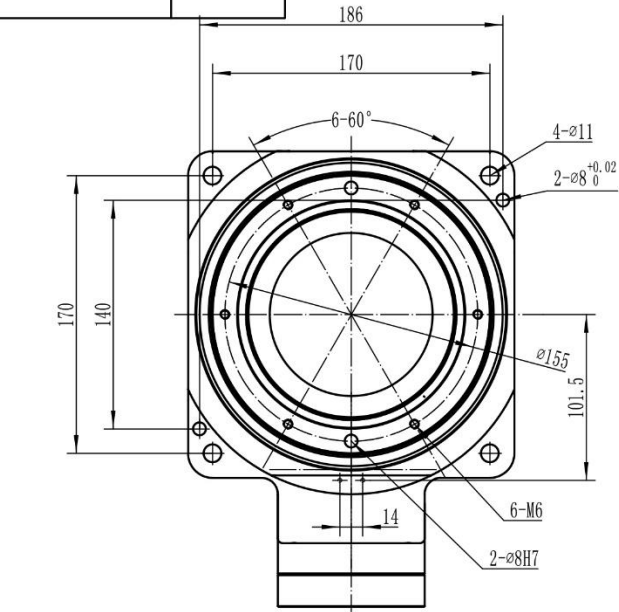


Version

A



Input end

| Assembly Specification Table | |
|----------------------------------|------------|
| Total ratio | 30(10+3) |
| Permissible output torque | 80N.m |
| Permissible output speed | 200rpm |
| Axial load | 500N |
| Positioning accuracy | ≤20arc.min |
| Repetitive positioning accuracy | ±15arc.sec |
| Parallelism of rotating platform | ≤0.04mm |
| Coaxiality of rotating platform | 0.02mm |

| | | | | | | |
|------------------------------|-------------------|---------------|--------|-------|-------|--|
| | Rework | | | | | |
| | Rework | | | | | |
| | Additional work | Angle of view | | | | |
| | | Stage mark | Weight | Scale | | |
| | | | | | 1:2.8 | |
| Material name | Processing method | | | | | |
| Non-standard information bar | | Page of | | | | |

| | |
|--|--|
| Please sign (seal) and send back | |
| Guangdong Kaifull Electronics Technology Co., Ltd. | |
| YKW200R-30V1 | |

* Continuous service life: 10000h