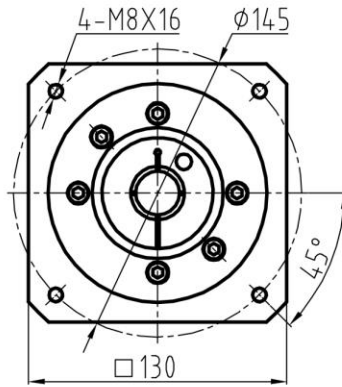
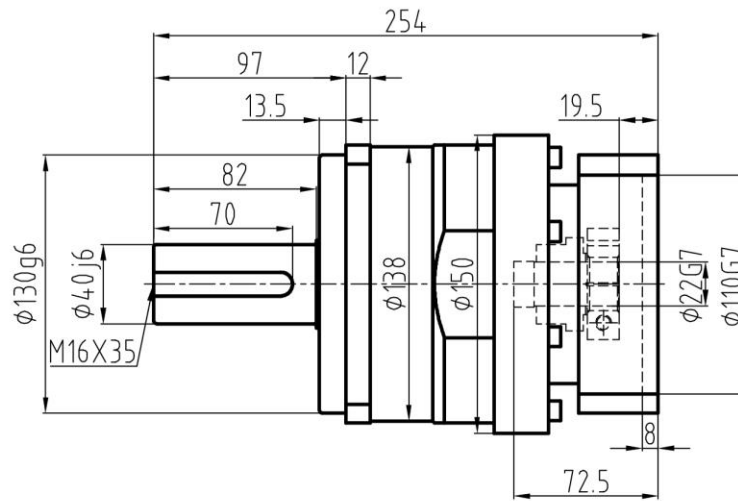
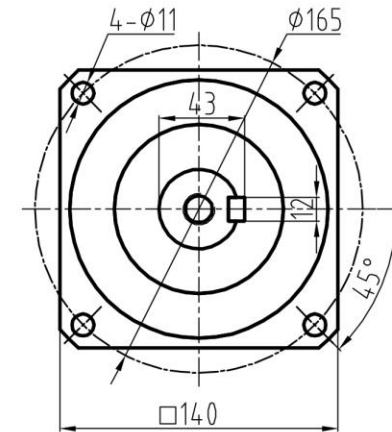


Customer name:

Input end



Output end



Full load efficiency: 98%
 Rated input speed: 2000min⁻¹
 Lubrication method: Synthetic grease
 lubrication (long-term lubrication)
 Average service life: 20000h
 Return clearance (precision):5arcmin

Working temperature: -25°~+90 °
 Maximum input speed: 4000min⁻¹
 Installation method: At will

Select speed ratio	i=
Customer's signature	

AF140-L1-[]-K[]-40-001-FT-22

Matching motor size: φ22×65/φ110×4/4-φ9-φ145

Parameter	Transmission ratio	3	4	5	7	10	Design	Liu Jinghua				AF140 single-level dimensional drawing
Rated output torque Nm		450	580	540	390	230	Checked by		Drawing mark	Weight	Scale	AF-140-[]-K[]-22
Fault stop torque Nm	2-time rated output torque					Standardization						
Moment of inertia Kgcm ²		20	15	14	12	11	Review					
Permissible radial load N		5800					Approval					
Permissible axial load N		4500										