

武汉华铁瑞杰轨道交通科技有限公司
Wuhan Huatie Ruijie Rail Transit Technology Co., Ltd.

📍 Sitai 5th Road, Sitai Industrial Park, Yongfeng Street, Hanyang District,
Wuhan City, Hubei Province, China.

☎ +8615072332788

✉ info@fashanrailway.com

🌐 www.fashanrailway.com www.fashanrailway.ru

FASHAN INTRODUCTION

Fashan Technology
Where Craftsmanship Meets Quality Control
in Rail Grinding Wheel Production



CONTENTS

Company
Introduction

01-02

Development
History

03-04

Qualifications
and Honors

05-10

 FASHAN FBRASIVE



FASHAN
INTRODUCTION

Product
Introduction

11-40

Company Profile

Fashan Technology, established in 2004, has been dedicated to the rail maintenance sector of the railway industry. Renowned as a leading manufacturer in China, we have earned widespread recognition in the industry with our expertise, innovative spirit, and relentless pursuit of quality.

2004

Established in

Industry Expertise

Our expertise lies in comprehensive rail maintenance, specializing in the research and development and production of rail grinding wheels. Fashan Technology not only holds a leading position in the domestic market but also extends our products and technology to the international stage.

● Research Achievements

Over the years, we have continuously invested in research and development, and achieved a series of significant results. Our innovations are not just theoretical, they have been tested and applied in practice.

● Product Applications

Our self-developed rail grinding wheels have been widely used in models such as Harsco, Speno, and Loram, proving the outstanding performance and reliability of our products. Additionally, we manufacture matching grinding wheels for Geismar and Robel grinding machines, as well as rail cutting wheels, meeting the diverse needs of our customers.

● Production Capacity

Fashan Technology owns its factory buildings, warehouses, test benches, and test lines, ensuring strict quality control from raw materials to finished products. With an annual output of 50,000 grinding wheels, each piece embodies our professional dedication and commitment to quality.

● Quality Control

We understand that product quality is the lifeblood of a company. Therefore, we use professional techniques to control product quality, ensuring that every piece of grinding wheel leaving our factory meets the highest standards.

● Future Outlook

Looking ahead, Fashan Technology will continue to uphold the core values of innovation, professionalism, and quality, continuously advancing the development of rail maintenance technology and contributing to the global railway industry.



Company Development History

▶ 2004 Years

The company was established as the first steel rail grinding machine abrasive wheel company in China, building a factory for research and development and production of abrasive wheels.

▶ 2006 Years

Received the Wuhan Railway Bureau Science Award for steel rail grinding abrasive wheels.

▶ 2007 Years

Obtained the Wuhan Railway Bureau Scientific and Technological Achievement Appraisal for PGM48 grinding machine special abrasive wheels.

▶ 2009 Years

Applied for a patent for steel rail grinding machine special abrasive wheels, applying for independent intellectual property rights.

▶ 2010 Years

Obtained the Wuhan Railway Bureau Product Inspection and Appraisal Certificate for PGM96c grinding machine special abrasive wheels.

▶ 2011 Years

Received the China Railway CRCC product certification, producing grinding machine special abrasive wheels, small grinding machine special abrasive wheels, and cutting discs.

▶ 2012 Years

Applied for ISO9001, ISO14001, GB/T28001-2011.

▶ 2013 Years

Drafted and established the People's Republic of China machinery industry standard - Bonded abrasive products - grind wheel for rail.

▶ 2013 Years

Obtained the Chengdu Railway Bureau Product Inspection and Appraisal Certificate for GMC96B grinding machine special abrasive wheels.

▶ 2014 Years

Established a steel rail grinding special abrasive wheel laboratory in conjunction with Wuhan University of Technology.

▶ 2016 Years

Applied for multiple patents and developed GMC16A type abrasive wheels, subway grinding machine special abrasive wheels.

▶ 2019 Years

Applied for multiple patents and developed GMC16A type abrasive wheels, subway grinding machine special abrasive wheels.

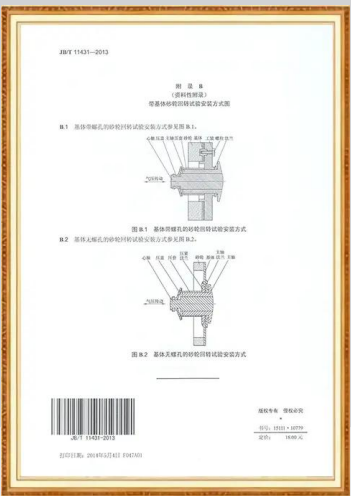
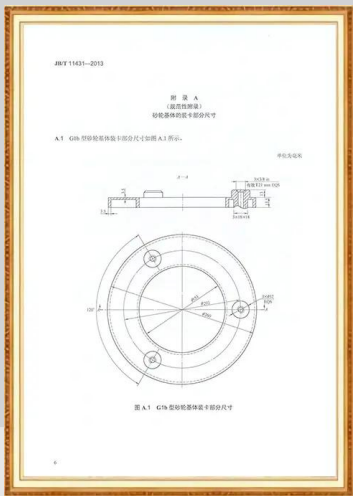
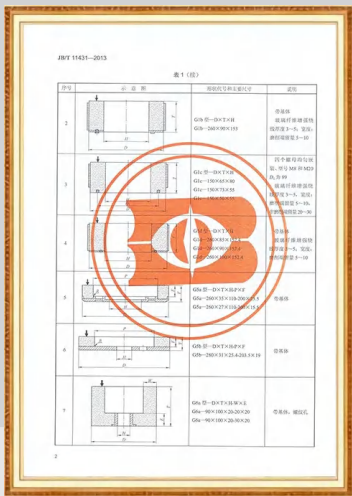
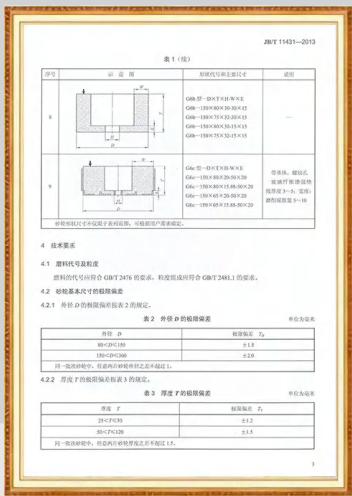
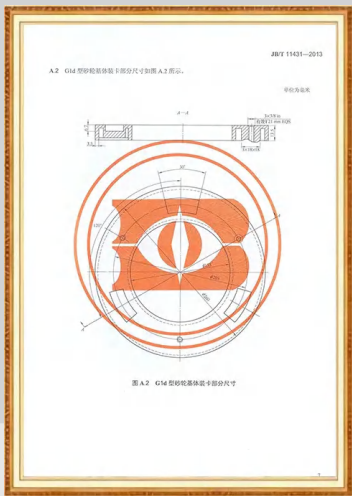
▶ 2020 Years

Annual production exceeded 500,000 pieces, with sales to multiple countries worldwide.

Qualifications and Honors

Honour Certificate

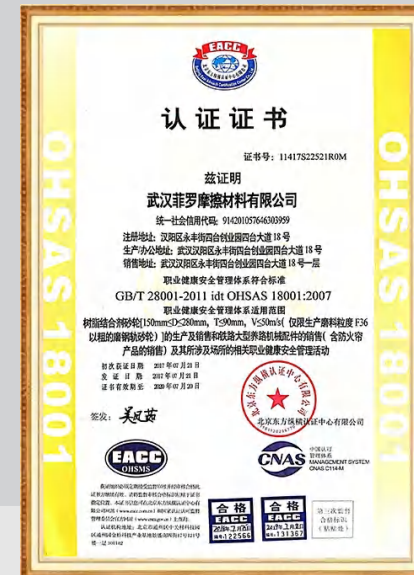
Bonded abrasive products - Grinding wheel for rail JB/T 11431-2013



Wuhan Railway Bureau 2006 Science and Technology Progress Award



GB/T 28001-2011
Occupational Health and Safety
Management System Certificate.



Practical Novelty Patent for Rail Grinding Abrasive Wheel



Practical Novelty Patent for Rail Grinding Abrasive Wheel



Design Patent for Rail Grinding Abrasive Wheel



ISO 14001



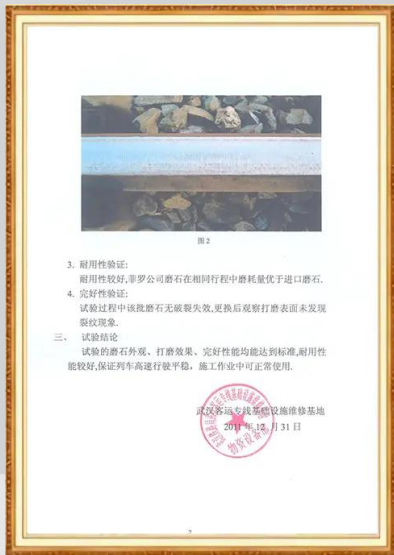
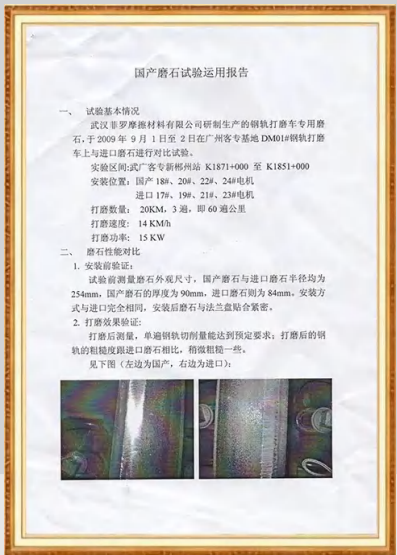
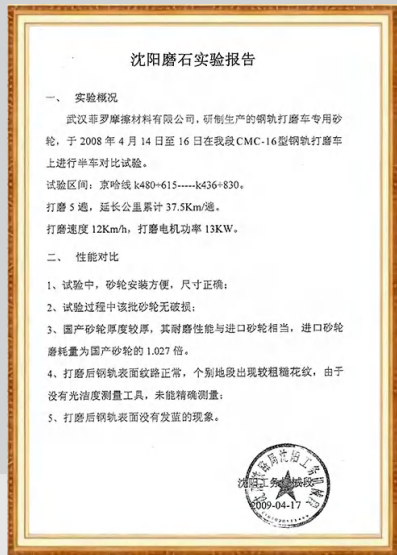
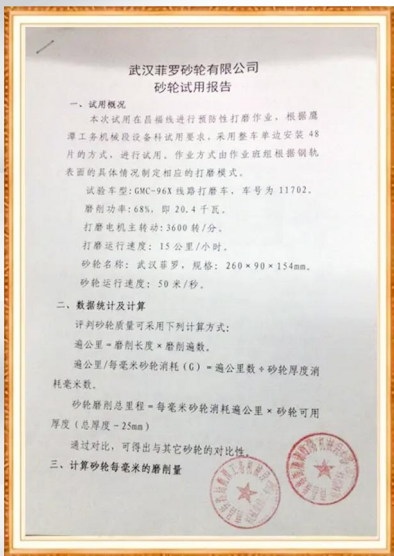
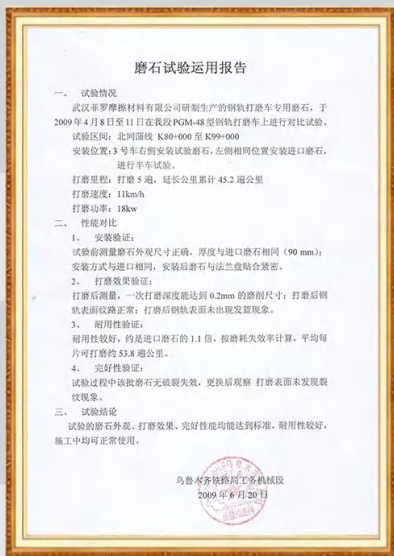
ISO 9001



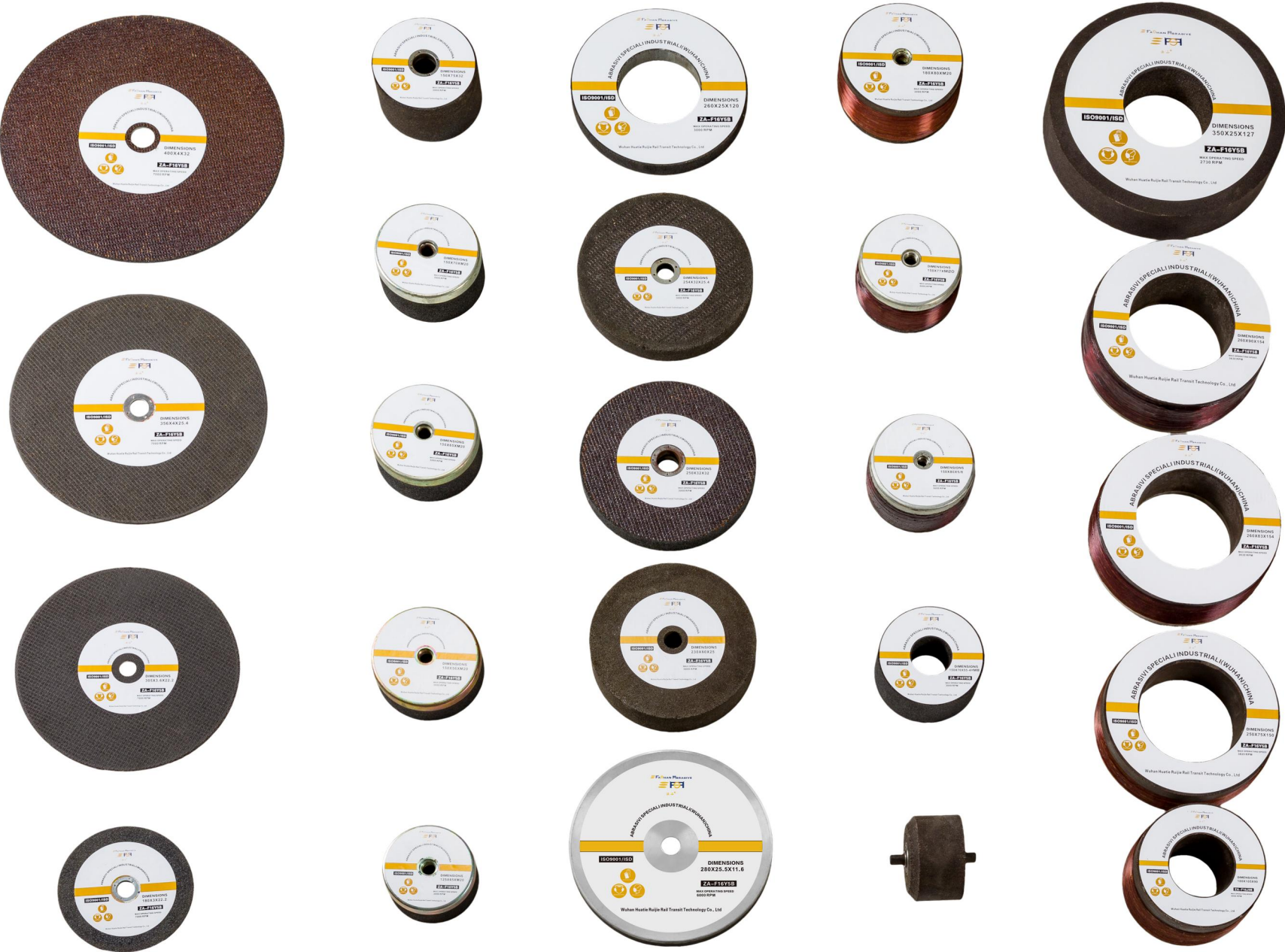
Reports Certificate

Reports Certificate

China Railway Product Production License and Practical Report



Product Introduction



Our railway maintenance product series is designed to meet the diverse needs of the railway industry, suitable for various applications such as ballastless track, ballasted track, switch grinding, and rail cutting. These products offer efficient and safe solutions for railway maintenance and construction with their exceptional performance and durability.



Efficient



Safety

			Matching Vehicle Models	Specifications	Materials	Hardness - Material Identification	granularity	maximum safe rotation speed	
Grinding Train Wheels	1	Hasco grinding train	Hasco Model PGM48 Grinding train Specific Grinding Wheel	260*90*154mm	Aluminum Matrix + Zirconia + Glass Fiber	AZ/A F16Y5B	16 Grit	50m/s	3630RPM
	2		Hasco Model PGM96C Grinding train Specific Grinding Wheel	Superhard Composite Materials260*90*154	Aluminum Matrix + Zirconia + Glass Fiber	AZ/A F16Y5B	16 Grit	50m/s	3630RPM
	3		Hasco Model RGH20C Switch Grinding train Specific Grinding Wheel	280*25.5*11.6	Iron Matrix + Zirconia + Glass Fiber	AZ/A F16Y5B	16 Grit	50m/s	6000RPM
	4		Hasco Model RGH20C Switch Grinding train Specific Grinding Wheel	150*80*5/8	Iron Matrix + Zirconia + Glass Fiber	AZ/A F16Y5B	16 Grit	50m/s	6000RPM
	5		Hasco Model RGH20C Switch Grinding train Specific Grinding Wheel	150*77*M20	Iron Matrix + Zirconia + Glass Fiber	AZ/A F16Y5B	16 Grit	50m/s	6000RPM
	6		Hasco Model PGM96C Grinding train Specific Grinding Wheel	Superhard Composite Materials260*90*154	Aluminum Matrix + Zirconia + Glass Fiber	AZ/A F16Y5B	16 Grit	50m/s	3630RPM
	7	speno grinding train	GMC16A Grinding Wheel for Speno Model Grinding train	180*105*90	Zirconia + Glass Fiber	AZ/A F16Y5B	16 Grit	50m/s	6000RPM
	8		GMC96B Grinding Wheel for Speno Model Grinding train	Superhard Composite Materials250*75*150	Zirconia + Glass Fiber	AZ/A F16Y5B	16 Grit	50m/s	3820RPM
	9	loram grinding train	loram grinding train	260*83*154	Aluminum Matrix + Zirconia + Glass Fiber	AZ/A F16Y5B	16 Grit	50m/s	3630RPM
	10	Mecno grinding train	Mecno grinding train	350*60*127	Zirconia Alumina/Brown Fused Aluminium Oxide	AZ/A F16Y5B	16 Grit	50m/s	2730RPM
	11			350*25*127	Zirconia Alumina/Brown Fused Aluminium Oxide	AZ/A F16Y5B	16 Grit	50m/s	2730RPM
	12			350*50*127	Zirconia Alumina/Brown Fused Aluminium Oxide	AZ/A F16Y5B	16 Grit	50m/s	2730RPM
	13			350*35*127	Zirconia Alumina/Brown Fused Aluminium Oxide	AZ/A F16Y5B	16 Grit	50m/s	2730RPM

Matching Vehicle Models			Specifications	Materials	Hardness - Material Identification	granularity	maximum safe rotation speed	
Hand Operated Machines wheels	14	Geismar/robel Type 150 Grinding Wheel for Machine Tools	150*70*M20	Zirconia Alumina/Brown Fused Aluminium Oxide	AZ/A F20J9B	20 Grit	50m/s	6000RPM
	15		150*65*M20	Zirconia Alumina/Brown Fused Aluminium Oxide	AZ/A F20J9B	20 Grit	50m/s	6000RPM
	16		150*70*55-4*M8	Zirconia Alumina/Brown Fused Aluminium Oxide	AZ/A F20J9B	20 Grit	50m/s	6000RPM
	17		150*75*32	Iron Matrix + Zirconia / Brown Fused Aluminium Oxide	AZ/A F20J9B	20 Grit	50m/s	6000RPM
	18	Geismar/robel Type Grinding Wheel for Machine Tools	250*32*32	Zirconia Alumina/Brown Fused Aluminium Oxide	AZ/A F20J9B	20 Grit	50m/s	6000RPM
	19		260*25*120	Zirconia Alumina/Brown Fused Aluminium Oxide	AZ/A F20J9B	20 Grit	50m/s	3600RPM
	20	Geismar/robel Type 125 Grinding Wheel for Machine Tools	125*65*20-54*47	Iron Matrix + Zirconia / Brown Fused Aluminium Oxide	AZ/A F20J9B	20 Grit	50m/s	7500RPM
	21		125*65*20-36*18	Iron Matrix + Zirconia / Brown Fused Aluminium Oxide	AZ/A F20J9B	20 Grit	50m/s	7500RPM
	22	Customized Grinding Machinery Equipment	230*60*25	Zirconia Alumina/Brown Fused Aluminium Oxide	AZ/A F20J9B	20 Grit	50m/s	4000RPM
	23	Geismar/robel Type Grinding Wheel for Machine Tools	254*32*25.4	Iron Matrix + Zirconia / Brown Fused Aluminium Oxide	AZ/A F20J9B	20 Grit	50m/s	6000RPM
	24		180*80*M20	Iron Matrix + Zirconia / Brown Fused Aluminium Oxide	AZ/A F20J9B	20 Grit	50m/s	5000RPM
	25	Welding Seam Grinding Wheel	150*56*M20	Zirconia Alumina/Brown Fused Aluminium Oxide	AZ/A F20J9B	20 Grit	50m/s	6000RPM
Cutting Off Wheel	26	Geismar/robel	356*4*25.4	Zirconia Alumina/Brown Fused Aluminium Oxide	AZ/A 30Q5BF	30 Grit	100m/s	5400RPM
	27		305*3.6*22.2	Zirconia Alumina/Brown Fused Aluminium Oxide	AZ/A 30Q5BF	30 Grit	100m/s	6000RPM
	28		400*4*32	Zirconia Alumina/Brown Fused Aluminium Oxide	AZ/A 30Q5BF	30 Grit	80m/s	3800RPM
	29		180*3*22.2	Zirconia Alumina/Brown Fused Aluminium Oxide	AZ/A 30Q5BF	30 Grit	80m/s	7000RPM

Product Description

Formula Setting

Our R&D team meticulously designs and sets the formula for the grinding wheels based on the specific requirements of the product applications, ensuring adaptability to different railway maintenance tasks.

1 Mixing

Selected raw materials are mixed in precise formula ratios to lay a solid foundation for subsequent hot pressing.

2 Hot Pressing

The mixed materials are subjected to high temperature and pressure in the hot pressing process, ensuring the density and strength of the product.

3 Oven Curing

The semi-finished products are cured in an oven to further enhance their structural stability.

4 Glass Fiber Wrapping

To improve the wear resistance and structural strength of the product, we incorporate glass fibers and reinforce them through wrapping.

5 Testing

Each batch of products undergoes rigorous testing before leaving the factory to ensure performance and safety meet the highest standards.

6 Oven Insulation

After testing, the products are placed in an oven for insulation treatment to ensure the uniformity and stability of the materials.

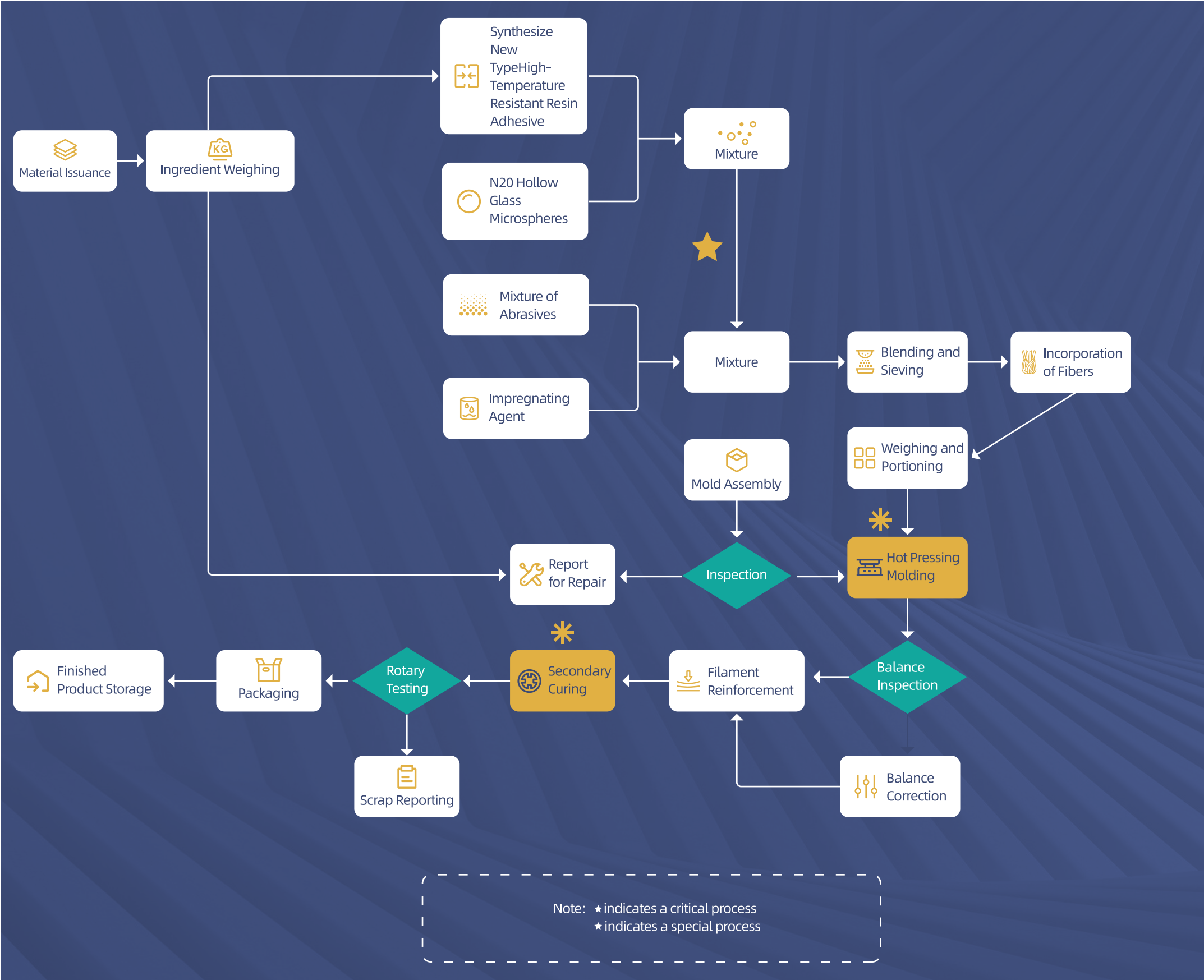
7 Packaging

The products that have undergone insulation treatment are professionally packaged for easy transportation and storage.

8 Shipping

Finally, our products are safely delivered to our customers, ready for practical application in railway maintenance.

Our product process strictly adheres to quality control standards, ensuring that each product performs excellently in every aspect of railway maintenance, meeting customers' demands for efficient and safe railway maintenance.



Rail Grinding Wheel For Grinding Train



Durability



Cutting

With over two decades of research and development, we insist on ensuring the quality of our products to meet the strictest standard requirements. Our grinding wheels are designed to provide exceptional grinding performance on a variety of railway tracks, including mainlines, curves, and high-traffic curves. They address a broad spectrum of rail conditions and are formulated to combat common rail diseases effectively. Our grinding wheels are crafted from premium materials such as zirconia, resin powder, and ultra-hard composite materials, offering superior durability and cutting performance that surpasses similar products in the industry. We take pride in our continuous innovation, refining our formulations to enhance the wear resistance and material removal rate of our grinding wheels. This commitment to improvement has led to widespread acclaim from our customers for their exceptional performance and reliability in real-world applications.

Customization for Specific Needs: In addition to our standard offerings, we specialize in customizing grinding wheels to suit the unique requirements of specific rail lines and train models. By understanding the distinct challenges faced by different railways, we tailor our products to ensure optimal performance and longevity. Our grinding wheels are compatible with a range of grinding machines from leading brands such as Harsco, Speno, Loram, and Mecno, further solidifying our position as a trusted partner in railway maintenance and innovation.

Usage scenarios



Fashan rail grinding wheel for grinding train

260×90×154mm

Brand: Fashan

Country of Origin: China

Specifications and Model: 260×90×154mm

Gross Weight: 9.82 kg

Compatible With: HARSCO PGM48/PGM96



Product Description

With over two decades of research and development, we stand by the quality of our products, ensuring they meet the highest standards. Our grinding wheels are designed to provide exceptional grinding performance on a variety of railway tracks, including mainlines, curves, and high-traffic curves. They address a broad spectrum of rail conditions and are formulated to combat common rail diseases effectively.

Our grinding wheels are crafted from premium materials such as zirconia, resin powder, and ultra-hard composite materials, offering superior durability and cutting performance that surpasses similar products in the industry.

We take pride in our continuous innovation, refining our formulations to enhance the wear resistance and material removal rate of our grinding wheels. This commitment to improvement has led to widespread acclaim from our customers for their exceptional performance and reliability in real-world applications.

Customization for Specific Needs: In addition to our standard offerings, we specialize in customizing grinding wheels to suit the unique requirements of specific rail lines and train models. By understanding the distinct challenges faced by different railways, we tailor our products to ensure optimal performance and longevity, further solidifying our position as a trusted partner in railway maintenance and innovation.



Excellence



Reliability



Harsco

Product Introduction

Seamless Compatibility with Harsco Train Grinding Equipment

Designed with compatibility in mind, our grinding wheels integrate seamlessly with Harsco train grinding equipment. This ensures efficient and effective grinding operations, reducing downtime and enhancing the overall productivity of rail maintenance projects.

Optimized Formulation with Zirconia and Resin Powder

Crafted from a blend of high-quality zirconia and resin powder, our grinding wheels offer an exceptional combination of durability and cutting performance. The zirconia content is carefully selected for its hardness and wear resistance, ensuring the wheels maintain their sharpness over time. The resin powder, on the other hand, is strategically used to regulate the hardness of the wheels, allowing for a balance between aggressive material removal and the preservation of rail surface integrity.

Enhanced Structural Integrity with Glass Fiber Wrapping

Our grinding wheels are fortified with a glass fiber wrapping process, a technique that significantly bolsters their structural integrity and durability. This innovative enhancement not only reinforces the wheels against the rigors of the grinding process but also extends their service life and improves wear resistance. An additional critical function of the glass fiber wrapping is its ability to prevent wheel rupture, ensuring safety and uninterrupted operations.



Efficient



Effective

Hasco grinding train		Hasco Model PGM96C Grinding train Specific Grinding Wheel	Superhard Composite Materials 260*90*154	Aluminum Matrix + Zirconia + Glass Fiber	AZ/A F16Y5B	16 Grit	50m/s	3630RPM
		Hasco Model RGH20C Switch Grinding train Specific Grinding Wheel	280*25.5*11.6	Iron Matrix + Zirconia + Glass Fiber	AZ/A F16Y5B	16 Grit	50m/s	3630RPM
		Hasco Model RGH20C Switch Grinding train Specific Grinding Wheel	150*80*5/8	Iron Matrix + Zirconia + Glass Fiber	AZ/A F16Y5B	16 Grit	50m/s	6000RPM
		Hasco Model RGH20C Switch Grinding train Specific Grinding Wheel	150*77*M20	Iron Matrix + Zirconia + Glass Fiber	AZ/A F16Y5B	16 Grit	50m/s	6000RPM
		Hasco Model PGM96C Grinding train Specific Grinding Wheel	Superhard Composite Materials 260*90*154	Aluminum Matrix + Zirconia + Glass Fiber	AZ/A F16Y5B	16 Grit	50m/s	3630RPM

Fashan rail grinding wheel for grinding train 250×75×150mm

Brand: Fashan

Country of Origin: China

Specifications and Model:250×75×150-ZA-F16J9B

Gross Weight:7.48 kg



Compatible With: SPENO



Product Description

- Designed for SPENO Train Models
Specifically designed for SPENO train models, our grinding wheels ensure seamless integration and efficient operation with SPENO rail grinding equipment.
- Enhanced with Glass Fiber Wrapping
Our grinding wheels are strengthened with a glass fiber wrapping process, enhancing their structural integrity and extending service life. This innovative enhancement not only boosts durability and wear resistance but also helps prevent wheel rupture, contributing to quality stability.
- Addressing Rail Diseases
Our grinding wheels excel in addressing rail surface diseases, effectively eliminating issues such as corrugation, pitting, and cracking, restoring the smoothness of the rails and extending their service life.
- Quality Commitment
Our commitment to quality permeates every step of production, from precise mixing and hot pressing to rigorous balance testing. Secondary curing, rotary testing, and controlled oven treatment further ensure the consistency and reliability of our products.

20^{years}
Research and Testing

speno grinding train		GMC16A Grinding Wheel for Speno Model Grinding train	180*105*90	Zirconia + Glass Fiber	AZ/AF16Y5B	16 Grit	50m/s	6000RPM
		GMC96B Grinding Wheel for Speno Model Grinding train	Superhard Composite Materials 250*75*150	Zirconia + Glass Fiber	AZ/AF16Y5B	16 Grit	50m/s	3280RPM



Fashan rail grinding wheel for grinding train

260×83×154mm

Brand: Fashan

Country of Origin: China

Specifications and Model: 260×83×154mm-ZA-F16Y5B

Gross Weight: 9 kg


Packing Dimensions: 300×300×150 mm

Compatible With: LORAM



Additional Content

Through rigorous experimentation and precise formulation, our grinding wheels have seen a marked improvement in durability. Designed with ease of use and maintenance in mind, they significantly reduce the physical labor required by field workers. We also provide comprehensive technical support and customized services to ensure every customer receives the most suitable product configuration based on their specific needs.

loram grinding train		260*83*154	Aluminum Matrix + Zirconia + Glass Fiber	AZ/A F16Y5B	16 Grit	50m/s	3630RPM
----------------------	---	------------	--	-------------	---------	-------	---------

Product Description

Enhanced with Glass Fiber Reinforcement

To prevent damage during operation, we have integrated a glass fiber wrapping process. This not only strengthens the wheels but also contributes to their longevity and wear resistance.

Compatibility with Loram Train Grinding Equipment

Designed specifically for seamless integration with Loram model grinding equipment, our wheels ensure efficient and effective grinding operations. They are also compatible with Loram train grinding equipment, offering the same high level of performance. Our strict control over mixing, hot pressing, and balance testing processes, along with additional glass fiber reinforcement, secondary curing, rotary testing, and oven treatment, further stabilizes product quality.

Long-Term Stability

Engineered for long-term stability, our products ensure consistent performance and reliability, even with extended use. This makes our steel rail grinding wheels an ideal choice for projects requiring durable and reliable grinding solutions.



Fashan rail grinding wheel
for grinding train
350×25×127mm

Brand: Fashan

Country of Origin: China

Specifications and Model: 350×25×127mm

Gross Weight: 12.88 kg

Compatible With: MECNO



Product Description

Mecno Curve grinding technology utilizes a variety of grinding wheel assemblies, which are specifically designed to address the corresponding circular arc surfaces of the rail profile for refinement. This ensures that the characteristics of each arc surface after repair are preserved and that there is a smooth transition between adjacent arc surfaces. Consequently, this method effectively restores and maintains the continuous curve characteristics of the rail profile section, preventing the formation of small flat surfaces that could cause damage to wheel flanges. Under normal conditions, only 4 to 5 grinding wheels are required to cover the entire profile grinding operation of a single rail.

Operates with one tangential grinding stone per rail and restores radius R=13 mm.	Operates with two tangential grinding stones per rail and restores radius R=80 mm.	Operates with two tangential grinding stones per rail and restores radius R=300 mm.

4-5 Grinding wheels
Cover the entire profile grinding operation of a single rail.

Mecno



Mecno grinding train		350*60*127	Zirconia Alumina /Brown Fused Aluminium Oxide	AZ/A F16Y5B	16 Grit	50m/s	2730RPM
		350*25*127	Zirconia Alumina /Brown Fused Aluminium Oxide	AZ/A F16Y5B	16 Grit	50m/s	2730RPM
		350*50*127	Zirconia Alumina /Brown Fused Aluminium Oxide	AZ/A F16Y5B	16 Grit	50m/s	2730RPM
		350*35*127	Zirconia Alumina /Brown Fused Aluminium Oxide	AZ/A F16Y5B	16 Grit	50m/s	2730RPM

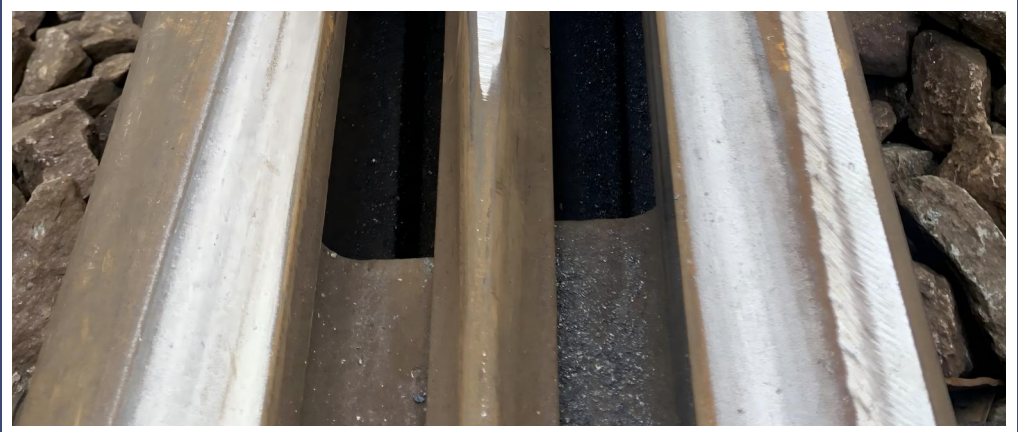
Rail grinding wheel for grinding machine

20
YEARS

With two decades of research and testing dedicated to the formulation of our grinding wheels.

Our grinding wheels are custom-made to fit all types of railway rail grinding machinery available on the market. With 20 years of research in the formulation of our grinding wheels, we have been serving the rail grinding industry for many years, ensuring the highest quality and performance for your rail maintenance needs. Our grinding wheels are specifically designed to match the vertical grinding machines Robel and Geismar, primarily used for precision grinding of key components such as steel rails, switch rails, heart rails, guard rails, wing rails, frog eyes, and switch points. Crafted from zirconia and resin powder, along with other composite materials, these wheels offer rapid removal of rail defects. Notably, the zirconia material outperforms traditional brown corundum with its superior cutting action. With two decades of research and testing dedicated to the formulation of our grinding wheels, we have developed custom formulations tailored to various parts of the steel rail to ensure precise problem-solving for different rail conditions. This targeted formulation design, combined with the innovation and expertise of Fashan Technology, has made our grinding wheels industry leaders in stability and performance. Furthermore, our grinding wheels are enhanced with glass fiber reinforcement, an innovation that not only improves the structural integrity of the wheels but also significantly extends their service life, increasing their durability and wear resistance. This enhancement reflects our commitment to continuous product improvement, ensuring the efficiency and reliability of the wheels in rail grinding operations. In summary, our grinding wheel products are an ideal choice for railway rail grinding machinery. They not only provide efficient grinding performance but also ensure operational safety and economy, meeting the stringent requirements of railway maintenance.

Usage scenarios



Fashan rail grinding wheel

150×56×M20

Brand: Fashan

Country of Origin: China

Specifications and Model: 150×56×M20-ZA-F16Y5B

Gross Weight:2.44kg

Compatible With: Geismar/Robel

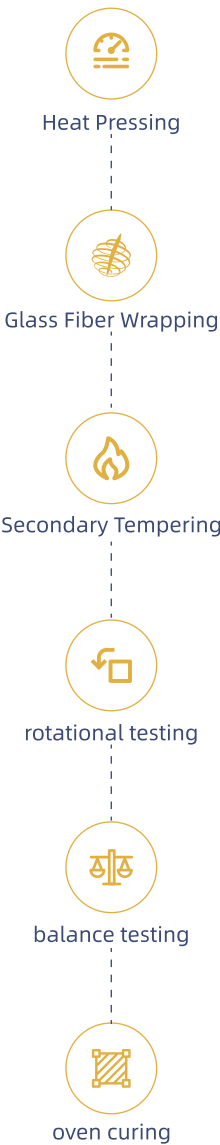


Product Description

With 20 years of research and testing, we ensure the quality of our products. A wealth of trial experience guarantees the advantages of our products. Our steel rail grinding wheels are made from zirconia and resin powder as raw materials, with the use of zirconia significantly enhancing the wear and cutting performance. We strictly control the mixing, hot pressing, and balance testing processes, and further stabilize the product quality through the addition of glass fiber winding, secondary curing, rotary testing, and oven treatment.

Our grinding wheels are meticulously designed to ensure compatibility with vertical grinding machines such as Robel and Geismar, primarily used for precision grinding of railway components including steel rails, switch rails, frog noses, wing rails, and switch points. These wheels are formulated with zirconia and resin powder, along with other composite materials, to swiftly address rail defects. Notably, the zirconia material outperforms traditional brown corundum with its superior cutting performance.

Zirconia + Resin Powder



Our production process includes heat pressing, glass fiber wrapping, secondary tempering, rotational testing, balance testing, and oven curing to ensure the quality and performance of our products. High cutting volume and durability are the hallmark characteristics of our products. The control of cutting rate and hardness is crucial, especially for smoothing post-welding seams on steel rails, addressing fish-scale pattern diseases on switches, and dealing with blockages on the rail surface. We tailor our formulations and dimensions to match the grinding machines used for steel rail applications, adjusting according to different scenarios to ensure optimal performance.

Our rigorous production process incorporates several key steps to ensure the quality and performance of our grinding wheels. The heat pressing technique helps achieve high density and strength in the wheels. We then reinforce the structure with a glass fiber wrapping process, enhancing the integrity and extending the service life of the wheels. Secondary tempering is employed to ensure the wheels have the right hardness and durability for heavy-duty applications.

Each wheel undergoes a series of tests, including rotational testing to ensure they can withstand high speeds without breaking and balance testing to prevent vibrations during operation. The curing process in a controlled oven environment guarantees the wheels' hardness and structural stability.

Our commitment to quality and customization means that each grinding wheel is tailored to the specific needs of the application, whether it's for general rail maintenance or specialized tasks such as switch rail grinding. This ensures that our customers receive products that are not only durable but also perfectly suited to their unique requirements.



Hand
Operated
Machines
wheels

	Geismar/robel Type 150 Grinding Wheel for Machine Tools	150*70*M20	Zirconia Alumina /Brown Fused Aluminium Oxide	AZ /A F20J9B	20 Grit	50m/s	6000RPM
	Geismar/robel Type 150 Grinding Wheel for Machine Tools	150*65*M20	Zirconia Alumina /Brown Fused Aluminium Oxide	AZ /A F20J9B	20 Grit	50m/s	6000RPM
	Geismar/robel Type 150 Grinding Wheel for Machine Tools	150*70*55 -4*M8	Zirconia Alumina /Brown Fused Aluminium Oxide	AZ /A F20J9B	20 Grit	50m/s	6000RPM
	Geismar/robel Type 150 Grinding Wheel for Machine Tools	150*75*32	Iron Matrix + Zirconia / Brown Fused Aluminium Oxide	AZ /A F20J9B	20 Grit	50m/s	6000RPM
	Geismar/robel Type Grinding Wheel for Machine Tools	250*32*32	Zirconia Alumina /Brown Fused Aluminium Oxide	AZ /A F20J9B	20 Grit	50m/s	6000RPM
	Geismar/robel Type Grinding Wheel for Machine Tools	260*25*120	Zirconia Alumina /Brown Fused Aluminium Oxide	AZ /A F20J9B	20 Grit	50m/s	3600RPM

Hand
Operated
Machines
wheels

	Geismar/robel Type 125 Grinding Wheel for Machine Tools	125*65 *20-54*47	Iron Matrix + Zirconia / Brown Fused Aluminium Oxide	AZ /A F20J9B	20 Grit	50m/s	7500RPM
	Geismar/robel Type 125 Grinding Wheel for Machine Tools	125*65 *20-36*18	Iron Matrix + Zirconia / Brown Fused Aluminium Oxide	AZ /A F20J9B	20 Grit	50m/s	7500RPM
	Customized Grinding Machinery Equipment	230*60*25	Zirconia Alumina /Brown Fused Aluminium Oxide	AZ /A F20J9B	20 Grit	50m/s	4000RPM
	Geismar/robel Type Grinding Wheel for Machine Tools	254*32*25.4	Iron Matrix + Zirconia / Brown Fused Aluminium Oxide	AZ /A F20J9B	20 Grit	50m/s	6000RPM
	Geismar/robel Type Grinding Wheel for Machine Tools	180*80*M20	Iron Matrix + Zirconia / Brown Fused Aluminium Oxide	AZ /A F20J9B	20 Grit	50m/s	5000RPM
	Welding Seam Grinding Wheel	150*56*M20	Zirconia Alumina /Brown Fused Aluminium Oxide	AZ /A F20J9B	20 Grit	50m/s	6000RPM

Rail Cutting Wheel



Steel Rail Cutting Disc: Precision and Durability

Introducing our high-performance steel rail cutting discs, designed for reliable and efficient steel rail cutting operations. Crafted with premium brown corundum, our cutting discs deliver exceptional durability and a longer service life, ensuring minimal downtime and reduced maintenance.

Key Features:

Material

Made from brown corundum, renowned for its hardness and wear resistance, making it ideal for cutting through steel rails.

Long Service Life

The superior quality of our brown corundum ensures that our cutting discs last longer than comparable products, reducing the frequency of replacements.

Rapid Cutting Speed

Engineered for speed, our cutting discs allow for swift and precise cuts, enhancing productivity without compromising on safety.

Safety and Precision

Each cutting disc is manufactured to meet stringent safety standards, ensuring reliable performance with every use.

Our steel rail cutting discs are the tool of choice for professionals seeking a balance of performance, longevity, and safety in their rail maintenance and construction projects.

Fashan rail cutting wheel

180×3×22.2mm

Brand: Fashan

Country of Origin: China

Specifications and Model: 180×3×22.2-AF36Q8BF-70ms

Gross Weight: 1.98 kg

Packing Dimensions: 200*200*10 mm

Compatible With: Rail cutting machine



Durable



unbeatable value
for money

Our rail cutting discs are the result of extensive research and development, involving collaboration with university professors who have brought their expertise to the table, helping us to refine our products and overcome initial development challenges. The incorporation of advanced materials and production techniques has allowed us to create cutting discs that are not only fast and durable but also offer unbeatable value for money.

In the field, our cutting discs have proven their worth time and again, providing clean, accurate cuts with minimal effort. Their high performance and reliability make them a favorite among professionals who demand only the best in rail maintenance solutions.

Choose our rail cutting discs for your next project and experience the difference that quality, speed, and durability can make. With our commitment to excellence and customer satisfaction, you're not just getting a product—you're equipping yourself with a reliable partner in your railway endeavors.

Product Description

Steel Rail Cutting Disc

Precision and Durability
Introducing our high-performance steel rail cutting discs, designed for reliable and efficient steel rail cutting operations. Crafted with premium brown corundum, our cutting discs deliver exceptional durability and a longer service life, ensuring minimal downtime and reduced maintenance.

Introducing our robust range of rail cutting discs, meticulously engineered for the demanding tasks of railway maintenance and construction. Crafted from high-quality brown corundum, our cutting discs are designed to deliver swift cutting speeds, ensuring efficiency and precision in every cut.

Key Features

Material

Brown corundum, renowned for its hardness and wear resistance, making it an ideal choice for cutting through the tough material of rails.

Cutting Speed

Our discs are built to cut quickly, reducing downtime and accelerating the pace of your rail projects.

Durability

The exceptional durability of our cutting discs is a testament to our commitment to longevity and reliability, ensuring a prolonged service life even under rigorous use.

Cost-Effectiveness

We pride ourselves on offering a product that combines high performance with affordability, making our cutting discs an economically sound choice for your rail cutting needs.

Rail cutting wheel		Geismar /robel	356*4*25.4	Zirconia Alumina /Brown Fused Aluminium Oxide	AZ/A 30Q5BF	30 Grit	100m/s	5400RPM
		Geismar /robel	305*3.6*22.2	Zirconia Alumina /Brown Fused Aluminium Oxide	AZ/A 30Q5BF	30 Grit	100m/s	6000RPM
		Geismar /robel	400*4*32	Zirconia Alumina /Brown Fused Aluminium Oxide	AZ/A 30Q5BF	30 Grit	80m/s	3800RPM
		Geismar /robel	180*3*22.2	Zirconia Alumina /Brown Fused Aluminium Oxide	AZ/A 30Q5BF	30 Grit	80m/s	7000RPM