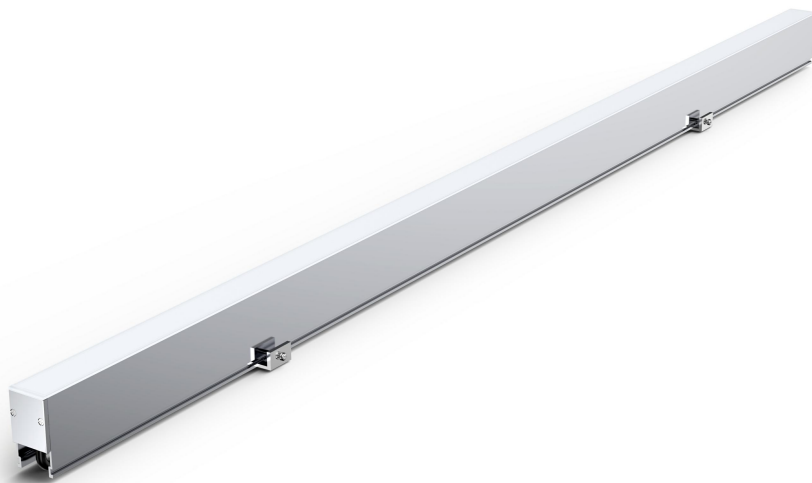
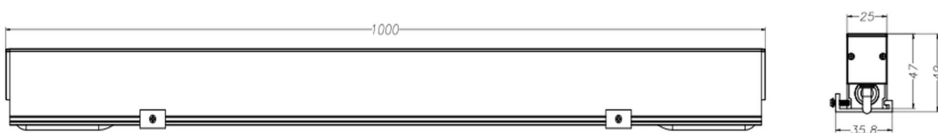


TC-25-02/LED Linear bar



Size:

Unit (mm)



TC-25-02/LED Linear bar



Features:

1. Minimal / minimalist lamp body appearance design meets modern industrial aesthetic standards
2. No glue full structure waterproof adopts new patented technology and technology
3. The whole flat cover and light guide end cover are used for uniform and frameless luminous effect
4. Square quick waterproof connector adopts patent technology of automobile piston type with nano breathing valve
5. The luminous mask is made of 3mm imported PC material, which has good UV resistance and corrosion resistance

Parameter:

Lamp Parameter		LED parameter	
Beam Angle	120°	LED chip	Lumileds/OSRAM
case material/color	Aviation grade aluminum alloy(Grey)	LED Item	5050/2835
Cover material/color	Frosted PC cover	CCT	Single color/RGB/RGBW
IP rate	IP66 structure waterproof	LED Life	50000 h
Lamp Power	12W/15W	Other Parameter	
Input Voltage	DC24V/DC48V	Cable size	5 pins rubber cable(power cable 1 mm ² ,signal cable 0.3mm ²),connector:φ16mm Aluminium alloy+φ1.5mm Gold-plated solid Pins
Pixel segment	ON/OFF/8 PIXELS	Cable length	150mm
Light Efficiency	75lm/w(white)	Fixing clip	6063 Aluminium alloy
Light angle	Fixing clip for option	Light distribution	
Cable location	From the bottom		
Control way	ON-OFF /DMX512		
Series connection quantity	10pcs		