

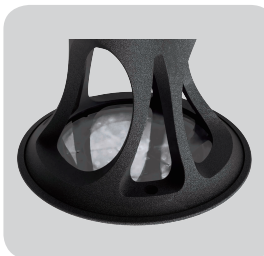
# JD-LED-060A NEW



Self-cleaning die casting aluminum heat sink



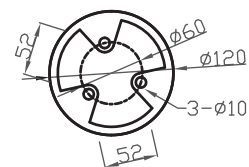
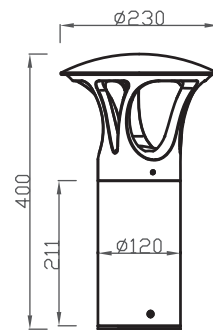
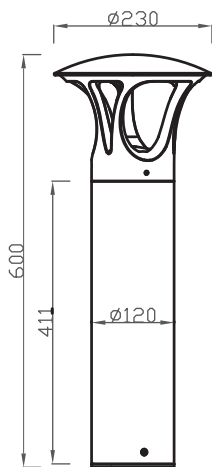
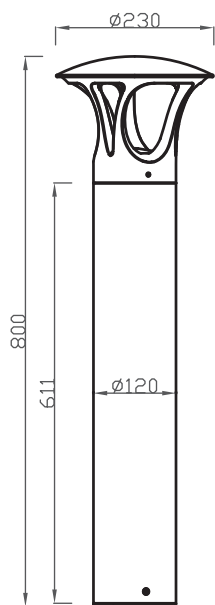
Die casting inner base



Tempered glass



LED driver



## Application:



Walkways



Parks / Gardens



Car parks



Prestigious

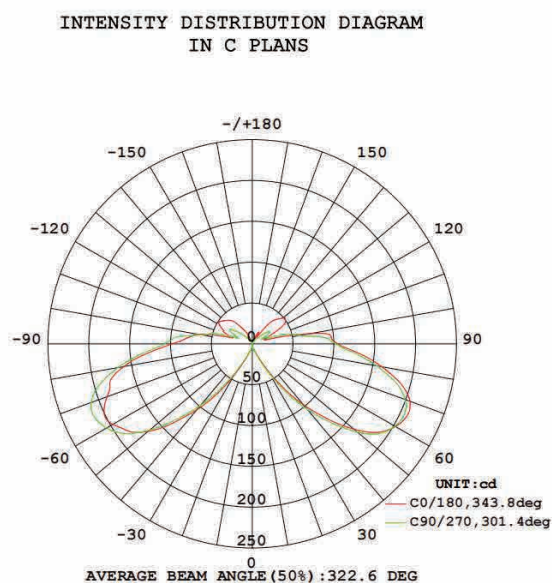


Retail



Amenity

## Distribution:



## Features:

- Main body is made of Die-casting aluminum alloy with Extruded aluminum alloy.
- The diffuser is a clear anti-UV glass for high efficiency and vandal resistance.
- Lumileds 2835 or 3030 led chip and Eaglerise driver as regular, Tridonic, ,Kegu driver options.
- Easy access to LED and driver via a removable head.
- 2700-6500K color temperature options.
- Tamper proof fixings for increased vandal resistance
- Anti-UV electrostatic powder spraying, regular color: Black, Silver, RAL7043, RAL7016.
- IP65 rating water and rust proof protection.
- IK08 rating housing protection.
- Warranty is 5 years.

## Specification:

Item No.	LED	Lumens	Wattage	CCT	CRI
JD-LED-060A-10W	Lumileds2835	600Lm	10W	2700-6500K	≥80
JD-LED-060A-15W	Lumileds2835	900Lm	15W	2700-6500K	≥80
JD-LED-060A-20W	Lumileds2835	1200Lm	20W	2700-6500K	≥80