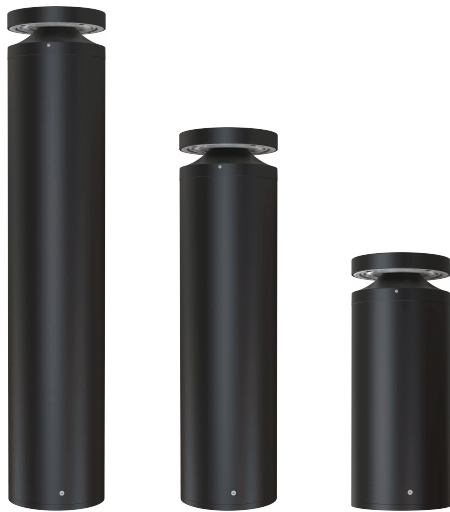
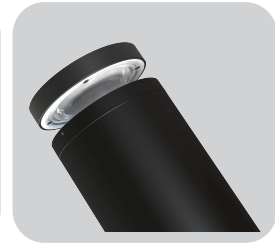


JD-LED-049S NEW



Adc12 die casting aluminum heat sink



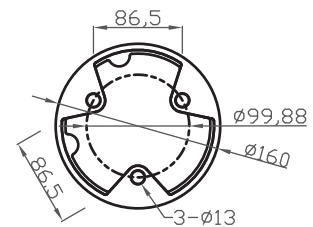
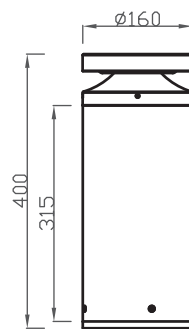
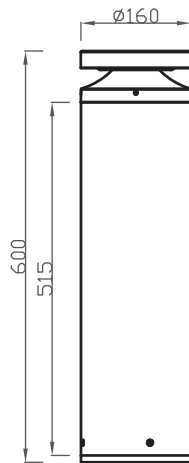
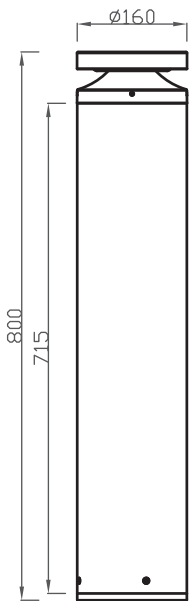
Big angle optic lens



Die casting inner base



Driver space



Application:



Walkways



Parks / Gardens



Car parks



Prestigious

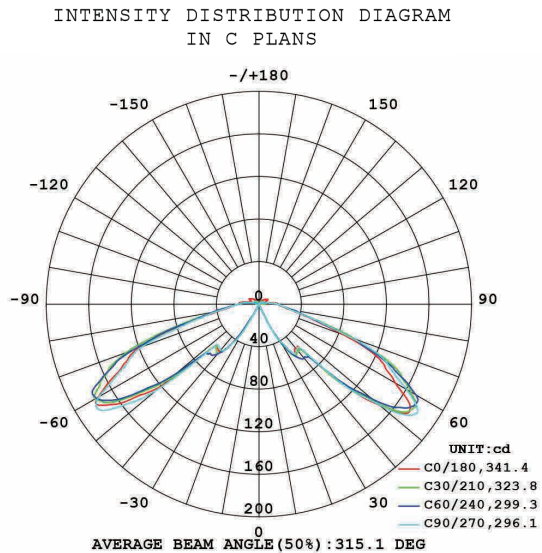


Retail



Amenity

Distribution:



Features:

- Main body is made of Die-casting aluminum alloy with Extruded aluminum alloy.
- The diffuser is a frosted anti-UV polycarbonate for high efficiency and vandal resistance.
- Lumileds 2835 led chip and Philips driver as regular, Tridonic ,Eaglerise,Kegu driver options.
- Easy access to LED and driver via a removable head.
- 2700-6500K color temperature options.
- Tamper proof fixings for increased vandal resistance.
- Anti-UV electrostatic powder spraying,regular color:Black,Silver,RAL7043,RAL7016
- IP65 rating water and rust proof protection.
- IK10 rating housing protection.
- Warranty is 3-5 years.

Specification:

Item No.	LED	Lumens	Wattage	CCT	CRI
JD-LED-049S-10W	Lumileds 2835	600Lm	10W	2700-6500K	≥80
JD-LED-049S-15W	Lumileds 2835	900Lm	15W	2700-6500K	≥80
JD-LED-049S-20W	Lumileds 2835	1200Lm	20W	2700-6500K	≥80
JD-LED-049S-25W	Lumileds 2835	1500Lm	25W	2700-6500K	≥80