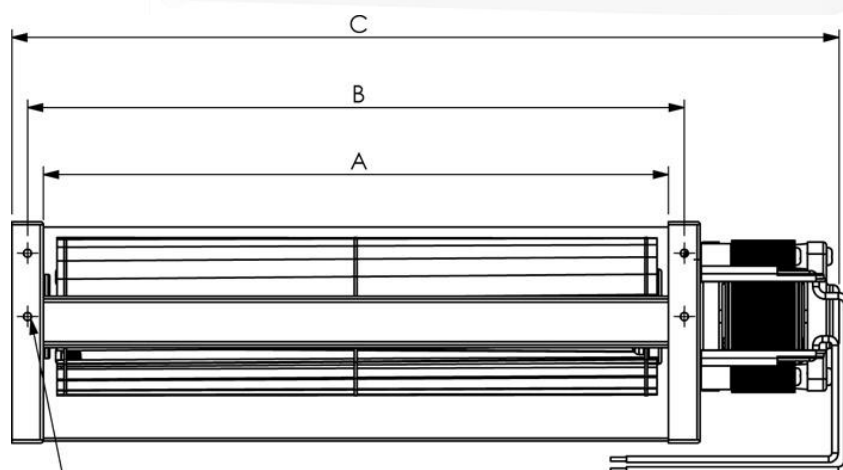
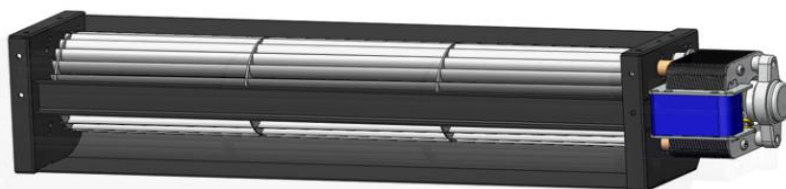
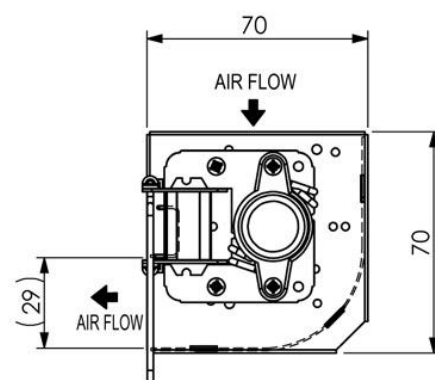




## Size: JE-050 AC Fan



2\*8-M4抽孔攻牙



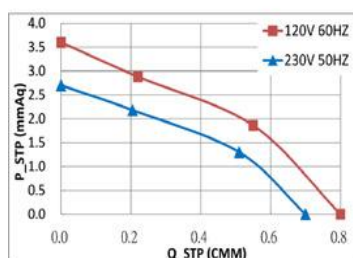
Motor : AC Shaded Pole type 1Ø 2P

Spec. Model	Size(mm)			Rated Voltage (V)	Rated Frequency (HZ)	Rated Current (A)	Input Power (W)	Speed (r.p.m.)	Max Pressure (mmAq)	Maximum Air Flow (m³/min)	Noise (dBA)	Weight (g)	Safety Approval		
	A	B	C										UL	TUV	CE
JE-05009A12	98	108	162	120	50 / 60	0.15 / 0.13	11.0 / 10.0	2300 / 2400	2.7 / 3.6	0.7 / 0.8	38 / 39	610	○		
JE-05009A23				230	50 / 60	0.09 / 0.07	11.5 / 10.5	2300 / 2400	2.7 / 3.6	0.7 / 0.8	38 / 39		○	○	○
JE-05019A12	198	208	267	120	50 / 60	0.23 / 0.21	18.0 / 16.0	2200 / 1800	3.1 / 3.7	1.9 / 1.7	40 / 35	770	○		
JE-05019A23				230	50 / 60	0.10 / 0.09	14.0 / 13.0	1900 / 1400	3.1 / 3.6	1.8 / 1.6	37 / 31		○	○	○
JE-05029A12	298	308	377	120	50 / 60	0.35 / 0.33	24.0 / 24.0	2200 / 1800	3.7 / 4.3	3.3 / 2.5	46 / 41	1100	○		
JE-05029A23				230	50 / 60	0.15 / 0.14	21.0 / 20.0	2100 / 1500	3.7 / 4.1	3.3 / 2.3	43 / 35		○	○	○
JE-05035A12	358	368	437	120	50 / 60	0.35 / 0.33	23.0 / 23.0	2100 / 1500	3.7 / 4.3	3.1 / 2.9	42 / 36	1200			
JE-05035A23				230	50 / 60	0.15 / 0.14	20.0 / 19.0	1900 / 1300	3.5 / 4.0	3.0 / 2.6	40 / 32				

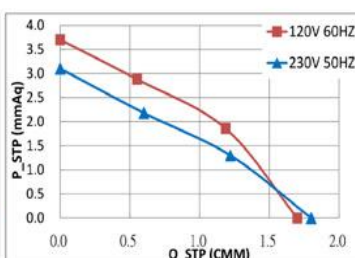
\* All reading are typical values at rated voltage

\* Specifications are subject to change without notice

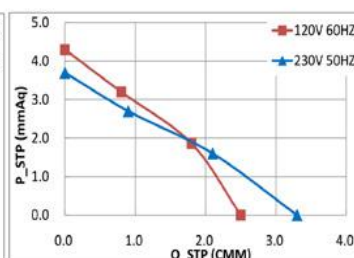
JE-05009A



JE-05019A



JE-05029A



JE-05035A

