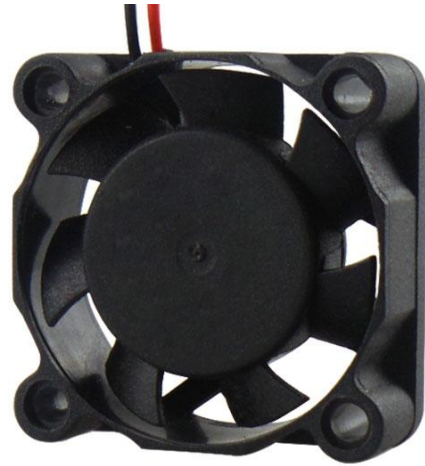




**Size: 30\*30\*10mm**

**General Specifications:**

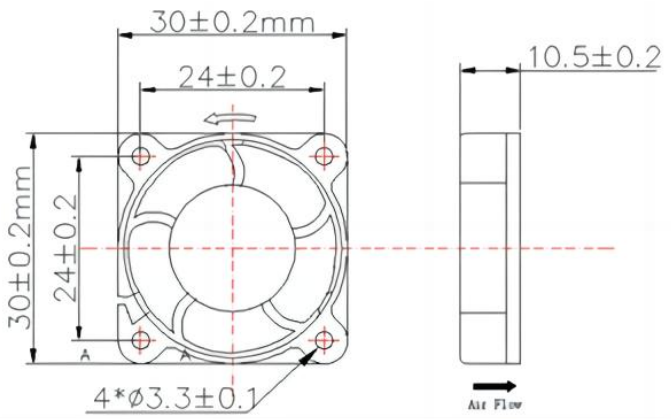
Motor: 4 pole brushless DC motor  
 Frame: Thermoplastic PBT+30%GF  
 Impeller: Thermoplastic PBT+15%GF  
 Bearing: Precision Ball Bearing/Sleeve Bearing  
 Storage temperature: -40°C to +75°C  
 Operating temperature: -10°C to +70°C



**Major Characteristic Parameters**

MODEL	Bearing System	Rated Voltage (V)	Rated Current (A)	Input Power (W)	Speed (RPM)	Max Air Flow (CFM)	Max Static Pressure (mm H2O)	Noise (dBA)	Weight (g)
FD1230107S(B)	S/B	12	0.12	1.44	12000	3.73	4.83	31.0	6
FD1230105S(B)	S/B	12	0.08	0.96	10000	2.91	3.37	27.0	6
FD1230103S(B)	S/B	12	0.07	0.72	7000	2.14	2.03	22.0	6
FD0530107S(B)	S/B	5	0.20	1.0	12000	3.73	4.83	31.0	6
FD0530105S(B)	S/B	5	0.14	0.7	10000	2.91	3.37	27.0	6
FD0530103S(B)	S/B	5	0.12	0.6	7000	2.14	2.03	22.0	6

\* B: Two Ball bearing S: Sleeve Bearing \* All reading are typical values at rated voltage  
 \* Function type optional \* Specifications are subject to change without notice



**Characteristic Curve**

