



# **SlaByte Software**

## **User Manual**

[www.slabyte.com](http://www.slabyte.com)

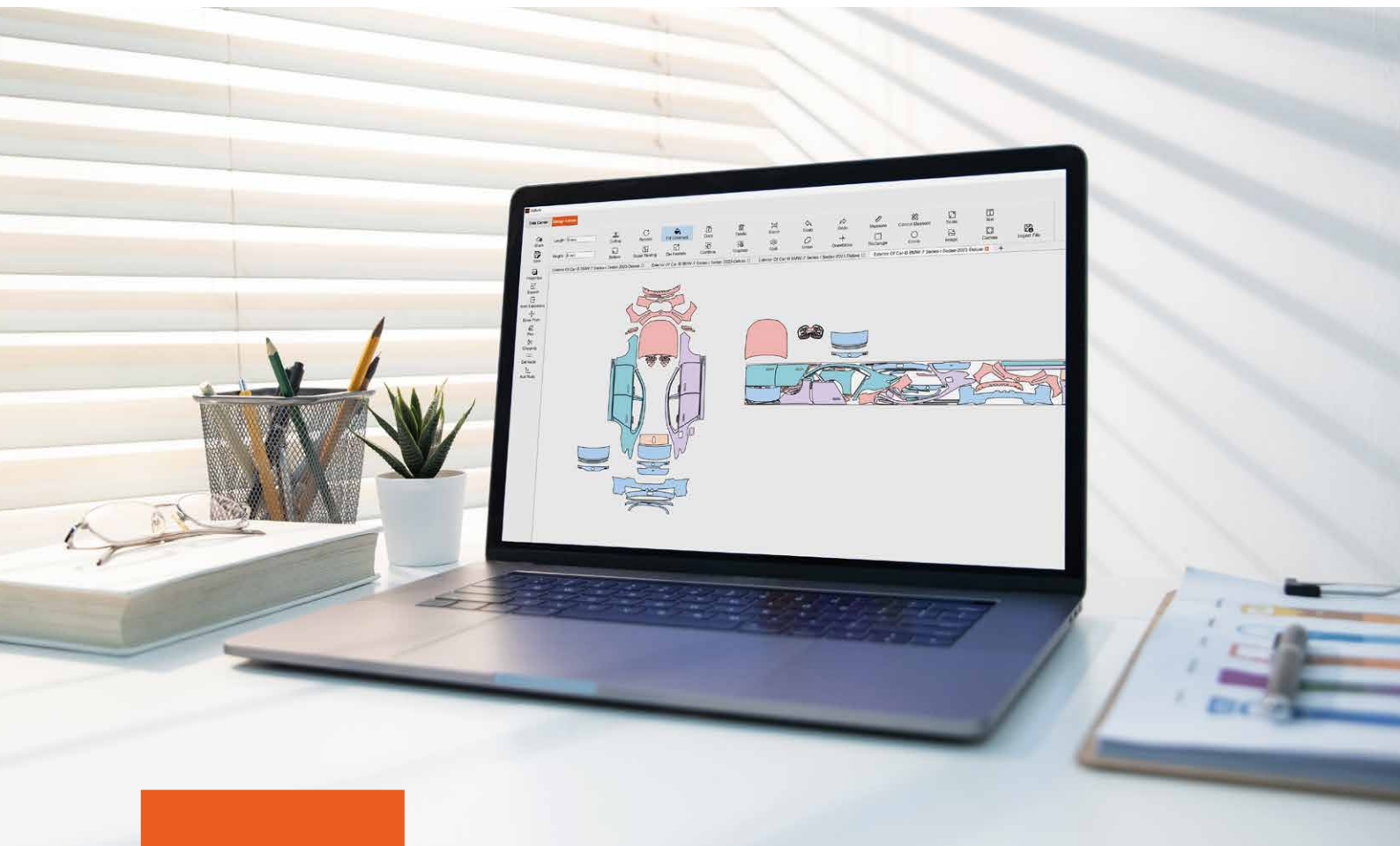
# THANK YOU

Thank you for choosing SlaByte Software, This manual will guide you through all aspects of the software, from understanding the interface to mastering the advanced features that make SlaByte a powerful tool in your shop.



## How to Use This Manual

This manual is divided into 2 main sections

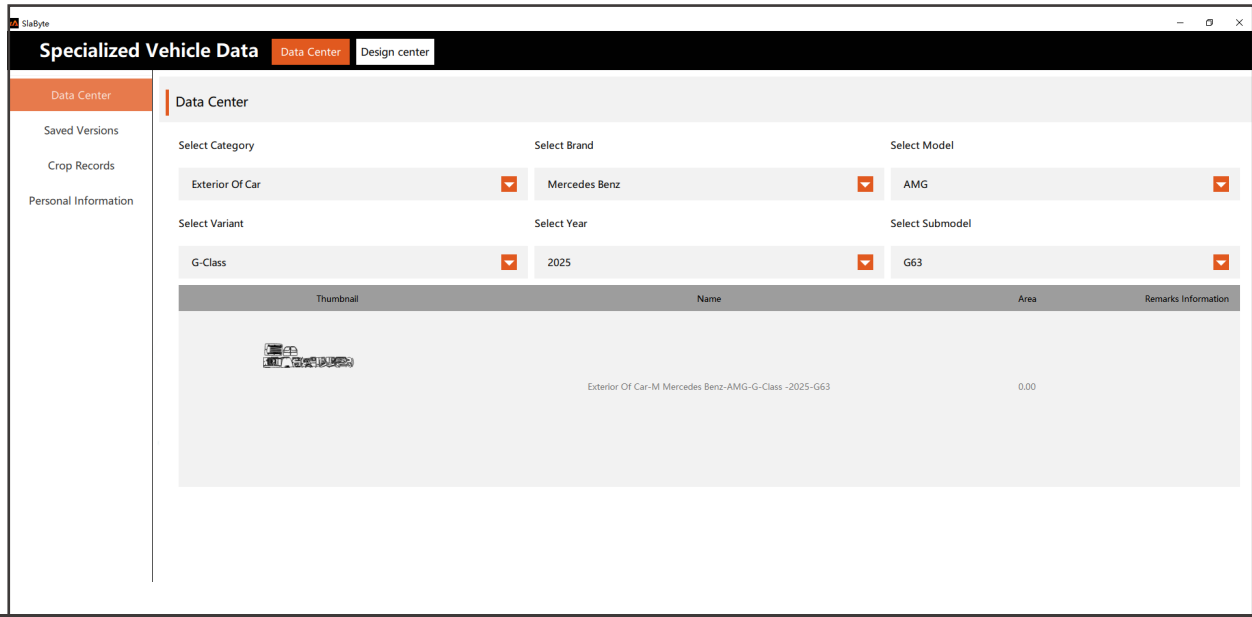


1

## Interface Overview

This section will help you get familiar with SlaByte's layout, tabs, and basic navigation.

It's perfect for beginners looking to quickly understand how to move around the software.



## Data Center

In the Data Center, users can select from a comprehensive range of data types for various applications. Some of the primary categories include:

- **Exterior of Car**

Patterns and designs for vehicle body wraps and customizations.

- **Window Film**

Templates for automotive window tinting and protective films.

- **Car Interior**

Data for interior upholstery, detailing, and protective layers.

In addition to these categories, the software supports a variety of other data types, offering flexibility to meet a wide range of cutting, engraving, and protective needs across industries.

Name	Thumbnail	Share code	Identity code	Share or not	Creation time
G63				Yes	2024-10-08 15:03:59
cdx				Yes	2024-10-08 15:03:49

## Saved Versions

In the Saved Versions section, users can manage their custom data sets. This functionality allows users to:

- **Save**

Securely store their customized or modified data for future use.

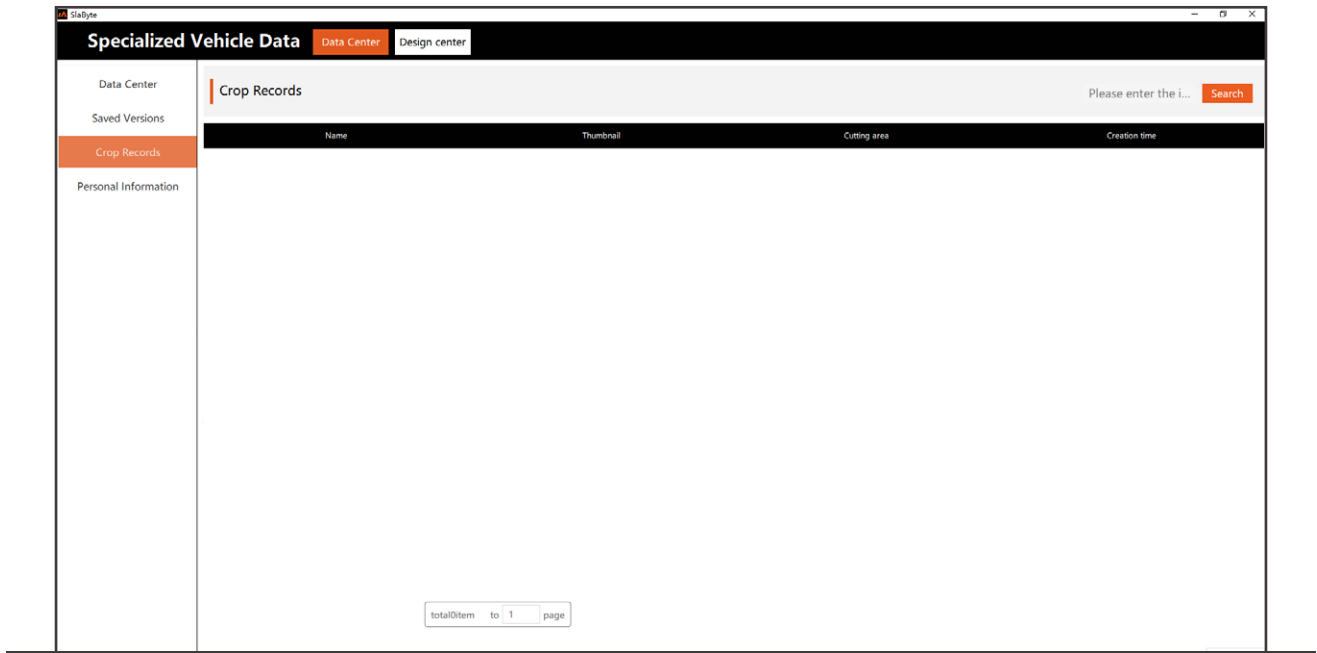
- **Share**

Easily share saved data versions with others, facilitating collaboration and data exchange.

- **Delete**

Remove any saved data versions that are no longer needed.

This feature provides users with full control over their data, ensuring flexibility and efficiency in managing their projects.



## Crop Records

The Crop Records section allows users to view a detailed history of all cutting operations performed. Key features include:

- **Record Tracking**

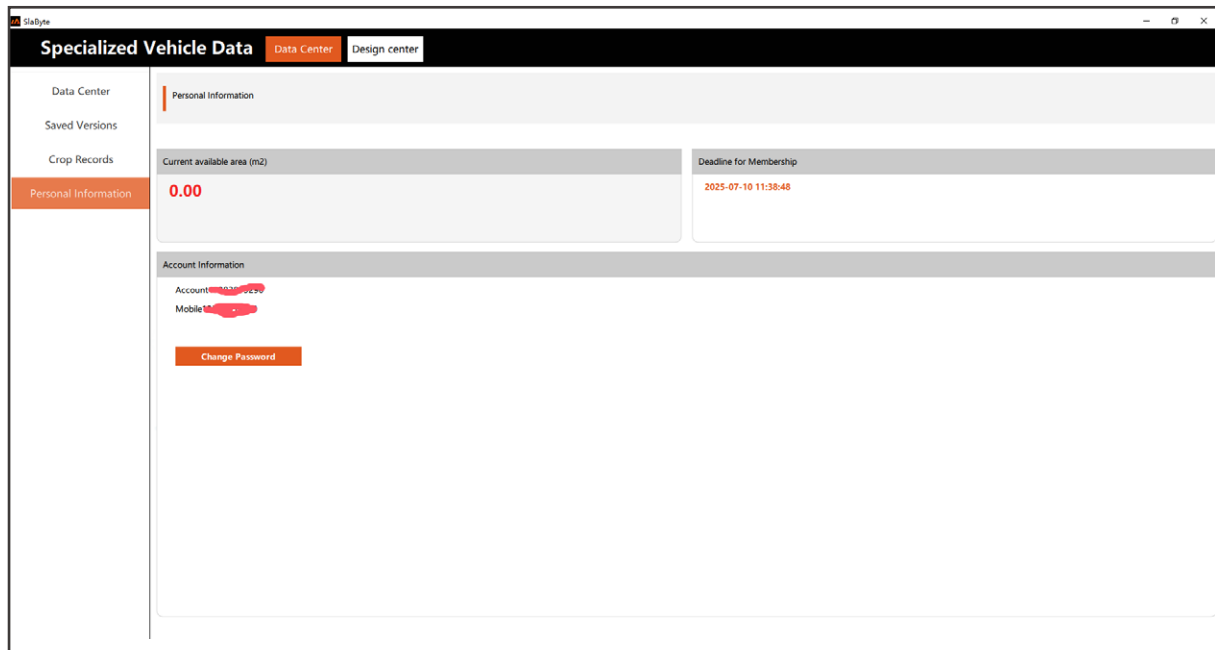
Access a complete log of previous cuts, including dates, settings, and data used.

- **Reuse**

Easily retrieve and reuse past cutting records for repeated tasks, ensuring consistency and saving time.

This functionality ensures efficient project management by enabling users to reference and replicate previous cutting jobs with precision.





## Personal Information

In the Personal Information section, users can manage and review their account details, including:

- **Account Information**

View personal account details such as username and profile settings.

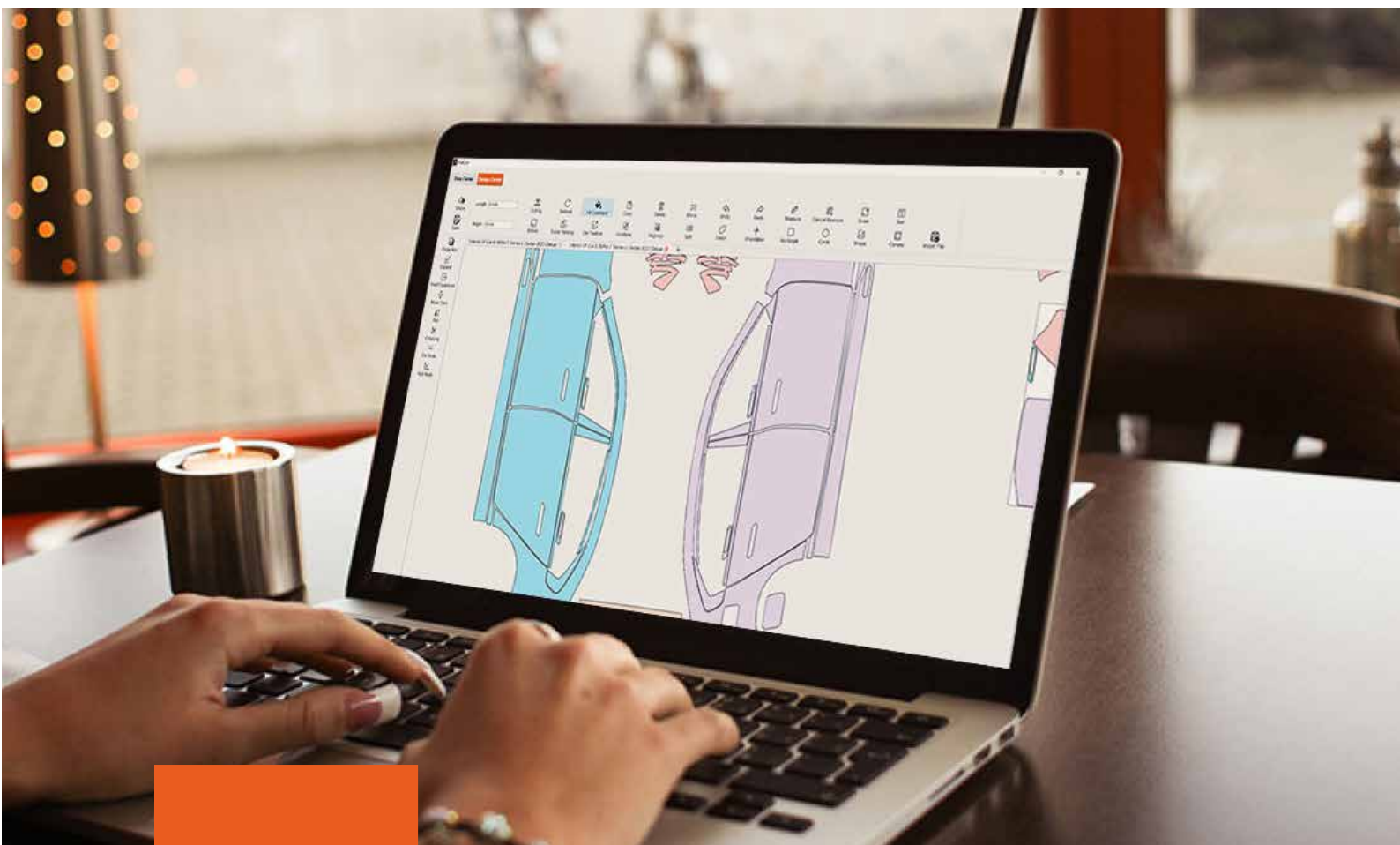
- **Subscription Status**

Check the usage period and any restrictions, including the maximum cutting area allowed under the current plan.

- **Change Password**

Easily update account security by changing your password.

This section provides users with full transparency and control over their account and subscription settings.



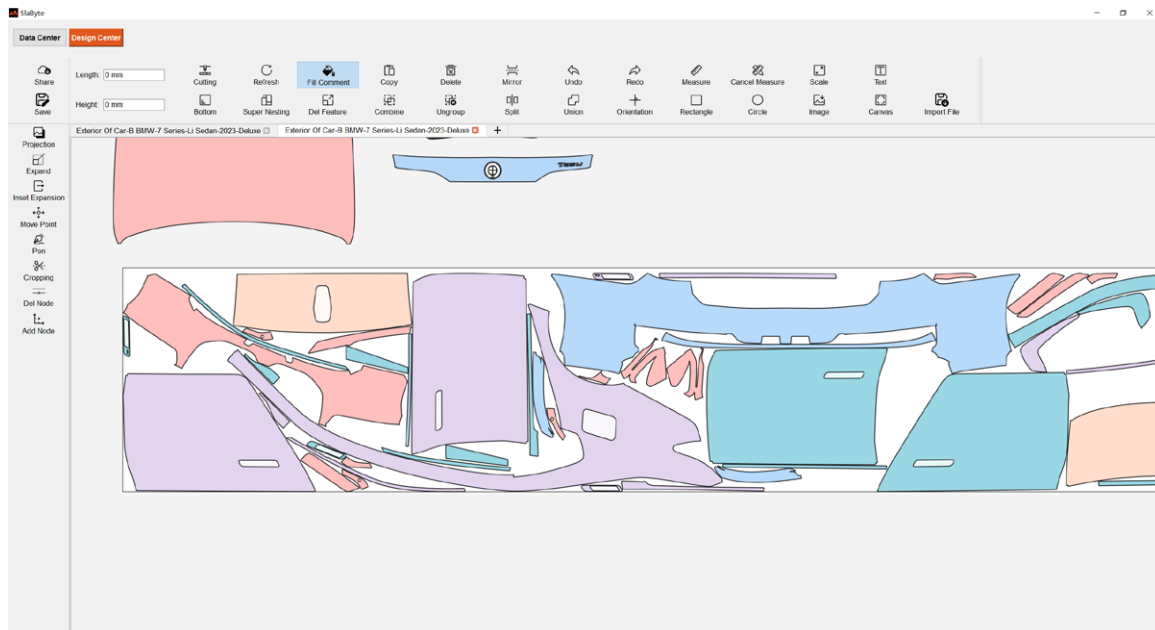
## 2

## Feature Guide

Here, you'll learn about the key features of SlaByte, including advanced tools like Super Nesting, editing functions, data management, and more.

Each feature is explained with step-by-step instructions to help you maximize efficiency and get the most out of the software.





## Projection

Projects the original data onto the canvas, allowing users to visually compare it with the edited version for accurate adjustments.



## Expand

Automatically extends the edges of selected shapes with a single click, making it easy to increase the size or create borders.



## Inset Expansion

Manually control the expansion or reduction of selected shapes. Use the mouse for adjustments and right-click to confirm the operation.



## Move Point

Data consists of individual points that can be selected and moved. Hold down the Shift key to select multiple points at once, then use the mouse or arrow keys to reposition them. Additionally, straight lines between points can be converted into curves by dragging with the mouse.



## Pen

Draw both straight lines and curves by clicking or clicking and dragging with the mouse, providing precision in creating and editing paths.



## Cropping

Modify shapes by directly cutting through node points. Hold Shift to select multiple nodes for cropping, and right-click to confirm the cut, effectively splitting the shape.



## Del Node

Remove unnecessary node points from a shape. After deletion, the remaining nodes are automatically connected by a straight line, simplifying the shape while maintaining structure.



## Add Node

Insert additional nodes into a shape, allowing for more detailed and refined edits.



## Cutting

Initiates the cutting process. Users can preview the cut, check cutting data (e.g., surface area in square meters), and select the cutting machine. It's recommended to set segmented cuts at 500mm intervals to minimize material waste.



## Bottom

Since most cutting machines begin cutting from the bottom-left corner, this function ensures that your design aligns properly within the machine's working area. To avoid errors caused by exceeding your machine's cutting width, it is recommended to use the Bottom alignment function before starting the cutting process. This minimizes the risk of misalignment and ensures an accurate cut.



### Refresh

A powerful tool for updating the canvas. After importing files or using the Super Nesting function, this ensures compatibility between various designs and the software.

---



### Super Nesting

A unique and core feature of SlaByte software, designed to optimize material usage. For each vehicle, this feature can save 3-5 meters of material. It's recommended to set a layout width of 1490mm, and the longer you allow the nesting process to run, the better the results.

---



### Fill Comment

Applies color fill to the data, making it easier to identify small or hard-to-distinguish elements and their actual placement on the vehicle, facilitating a smoother installation process.

---



### Del Feature

Allows users to delete unwanted elements from a design, such as radar holes or fuel tank covers. Select the unwanted data with the left mouse button, then right-click to confirm deletion.

---



### Copy

Select parts of the design to copy using the left mouse button. Data can be pasted across different designs, and you can use the keyboard shortcut Ctrl+C for quicker operations.

---



### Combine

Merge multiple designs together, enabling you to handle composite shapes or reduce material costs.



## Delete

Removes selected elements from the design. This can also be done using the Delete key on your keyboard.

---



## Ungroup

Unlinks grouped elements so that individual parts can be edited or deleted independently.

---



## Mirror

Creates a mirrored version of the selected data. Click to select the mirror axis, drag the mouse, and right-click to confirm the mirrored copy.

---



## Split

Select the split origin with the left mouse button, drag the mouse to the desired position, and confirm the split by clicking again. This creates two separate datasets.

---



## Undo

Reverts the last action, allowing you to backtrack to a previous state.

---



## Union

Combines two or more designs into a single element.

---



## Redo

Moves forward to the last undone action, effectively reversing an Undo.

---



## Orientation

Restricts the movement of tools like Pan and Measure to straight lines or 45-degree angles for precise alignment.



**Measure**

Allows multiple measurements from one point to another using the left mouse button. Right-click to complete the final measurement or cancel it.

---

**Rectangle**

Enables users to draw rectangles by dragging the left mouse button, with a right-click to finish the drawing.

---

**Cancel Measure**

Cancels the ongoing measurement process.

---

**Circle**

Allows users to draw circles by dragging the left mouse button, with a right-click to end the drawing.

---

**Scale**

Resize a selected shape to the desired dimensions, such as transforming a rectangle into a standard square.

---

**Image**

Imports images into the design.

---

**Text**

Allows users to add text directly onto the canvas.

---

**Canvas**

Set the canvas size. The default canvas mimics standard PPF dimensions, set at 1520mm by 150,000mm.





## Import File

This feature allows users to import their own SVG format files directly into SlaByte's software for further processing and editing. After importing, it is crucial to click Refresh as the first step to ensure that your design becomes fully compatible with SlaByte's system. This ensures smooth operation and integration with other tools and features within the software.

---



## Share

The Share feature allows users to receive and access special data provided by SlaByte's customer support team. By entering a unique share code, users can unlock hidden data or access custom data tailored specifically for their needs.

---



## Saved

The Saved feature enables users to store their work directly in the Saved Versions module within the Data Center. This ensures easy retrieval for future use and also provides the option to share the saved data with other users, facilitating collaboration and workflow efficiency.