



## Overview

Place of Origin:	Jiangsu, China
Index	1.67
Lenses Color:	Blue Cut UV420
Vision Effect:	Single Vision
Brand Name:	kingway
Certificate:	CE/ISO
Lenses Material:	MR-7
Coating:	AR Coating

Whatsapp,Skepe,Wechat, Email

## Packaging & Delivery

Selling Units:	Pairs
Single package size:	50X45X45 cm
Single gross weight:	About 22kgs
Package Type:	inner bag,out carton, export standard or upon your design
Lead Time :	Quantity(Pairs) 1 - 5000prs, 10days
	Quantity(Pairs) > 5000prs, To be negotiated

## Anti Blue Light 1.67 MR7 ASP UV420 single vision optical lenses HMC

Index	Monomer	Abbe value	UV value
1.67	MR-7	33	UV420
Transmission	Diameter	Coating	Power range
>97%	65/70mm	AR Coating	0.00~+-15.00/0.00~-6.00

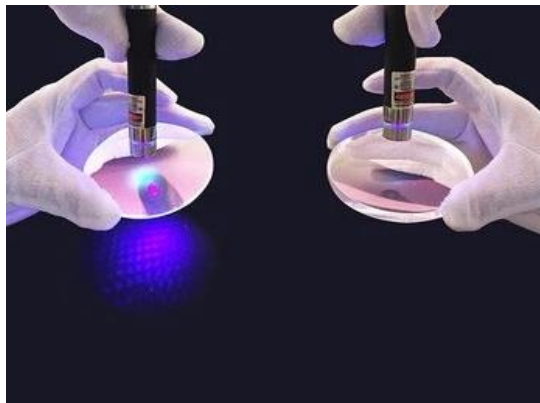
## Features.

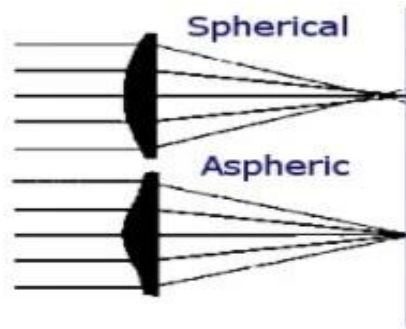
1. Lighter weight and thinner thickness, up to 50% thinner and 35% lighter than other lenses
2. In the plus range, aspherical lens is up to 20% lighter and thinner than spherical lens
3. Aspheric surface design for outstanding visual quality
4. Flatter front curvature than non-aspheric or non-atoric lenses
5. Eyes are less magnified than with traditional lenses
6. High resistance to breakage (very suitable for sports and children's spectacles)
7. Full protection against UV rays

### UV420-cut lens.

---UV+420cut technology filters out not only UVA&UVB, but also high-energy visible light(HEV light) of 400nm-420nm  
 ---Latest reasearch has shown that blocking UV and HEV light is critical for protecting eyes against cataracts and age-related macular degeneration(AMD).  
 ---We are still exposed to 60% of Ultraviolet rays on cloudy days and 20%-30% on rainy days. Oue blue cut lens can provide

### Aspherical Design.





Aspheric eyeglass lenses allow for crisper vision than standard spheric lenses, mostly when looking in other directions than the lens optical center. Not related to the optical quality, they may give a thinner lens, and also distort the viewer's eyes less as seen by other people, producing better aesthetic appearance.

### AR Coating.

--HC(hard coating): To protect the uncoated lenses from scratch resistance

--HMC(hard multi coated/AR coating): To protect the lens effectively from reflection, enhance functional and clarity of your vision

--SHMC(super hydrophobic coating): To make the lens waterproof, antistatic, anti slip and oil resistance.

