

➤ Manual for S800-8G

All gigabit ethernet switch



01 Product introduction

Product overview

hasivo independently developed S800-8G all gigabit ethernet switch with simple and convenient installation and maintenance means and rich business characteristics, which helps users to create security high performance network. The product can be widely used in the field of data exchange such as home network, multimedia classroom, security monitoring, wireless network and so on.

Port performance

- ◆ Provide 8*10/100/1000M RJ45 ports which can realize line speed forwarding.
- ◆ Each port supports MDI/MDIX automatic flip and duplex / rate self negotiation.
- ◆ Support IEEE 802.3x full duplex flow control and backpressure half duplex flow control.

02 Spare parts list



Network Switch



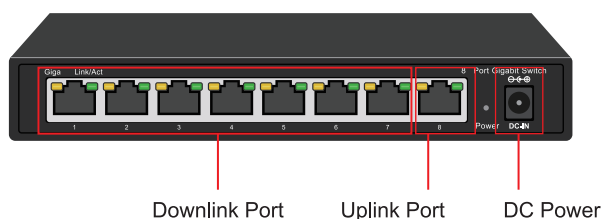
DC adapter



User manual+Warranty Card

03 Product display

Front



Back



Indicator definition:

| Indicator | | Status | Description |
|----------------------|--------|--------------------------|---|
| Power indicator: PWR | | Green light is always on | Power on normal |
| | | Always off | No power |
| Network indicator | Green | Light is flashing | The corresponding port works at 10/100M speed |
| | Orange | Light is flashing | The corresponding port works at 1000M speed |

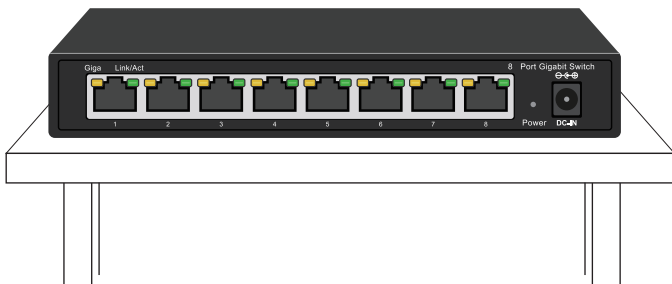
04 Installation & Points of attention

Checking before installation

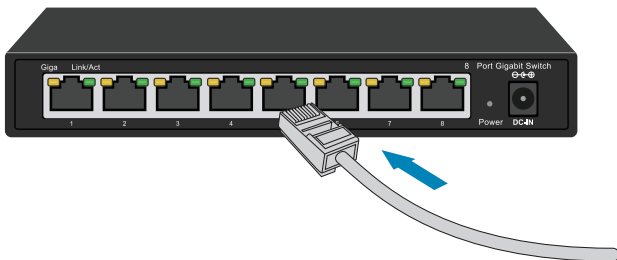
1. Check whether the accessories are complete. If there is any omission, please contact us.
2. Check whether the power supply voltage is consistent with the working voltage of the switch, so as to avoid the equipment burning out due to high voltage.
3. Ensure that the installation position of the switch has certain ventilation and heat dissipation conditions.
4. Please keep the power off during installation to avoid potential safety hazards.
5. Please install the switch on a stable plane to avoid falling and damage.

Install to desktop

1. Place the switch on the horizontal desktop in the ventilation area.

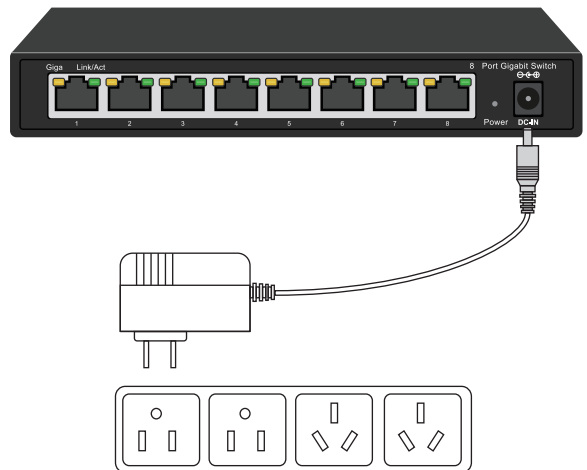


2. Insert the data cable



As shown in the figure, insert the crystal head of the data cable into the network port. When you hear a clear click, it indicates that the crystal head is successfully connected with the network port of the switch. Just plug in all the network cables of the network equipment in this way.

3. Connected the power

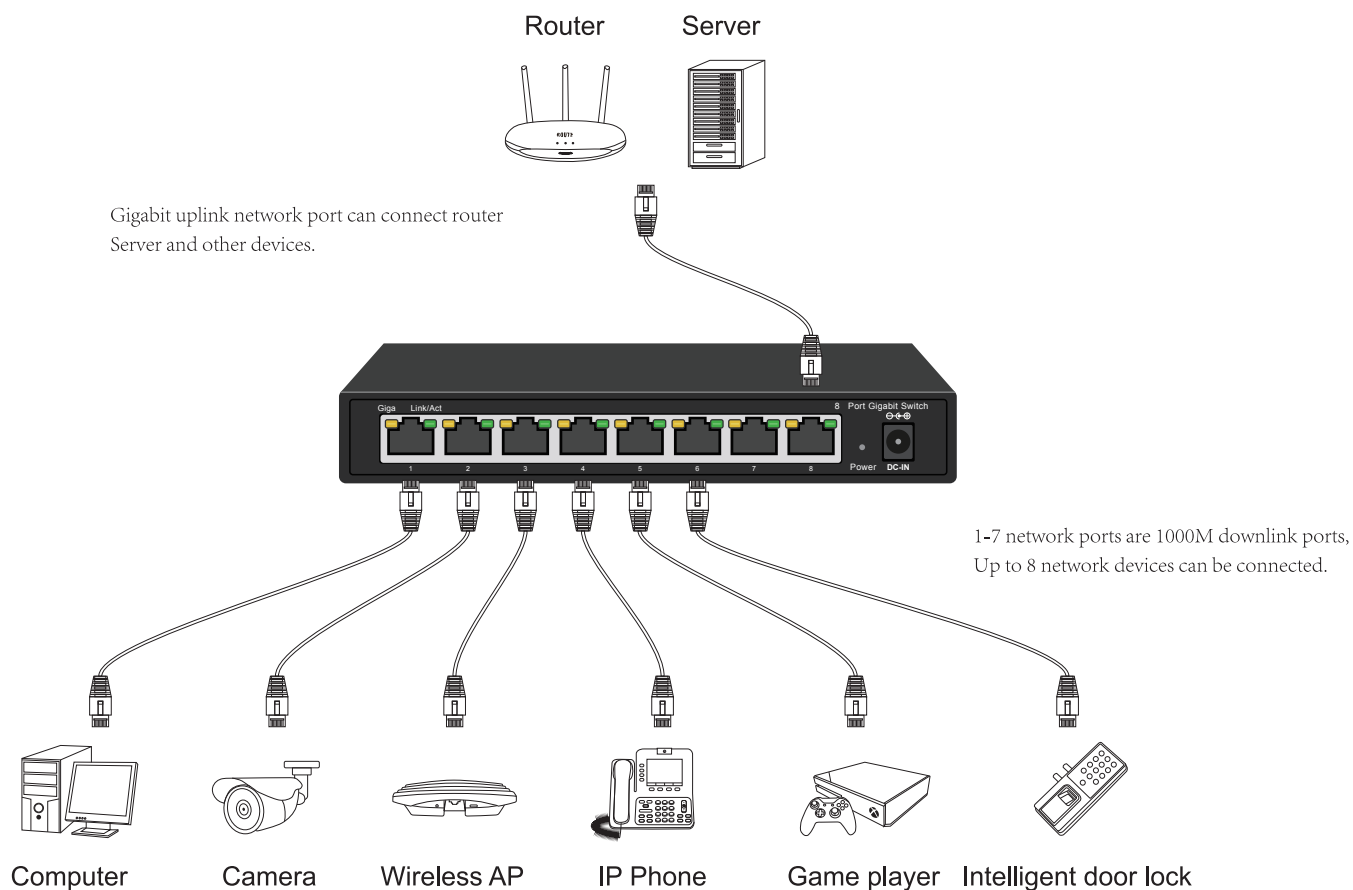


Plug into electricity supply

Points of attention

1. Do not stack heavy objects on the switch to avoid danger.
2. In order to avoid the risk of electric shock, please do not open the machine box when the switch is working, even if it is not powered on, please contact us in case of any problem.
3. Before cleaning the switch, pull out the power plug of the switch. Do not wipe it with wet fabric or clean it with liquid.
4. If the power adapter is damaged, do not replace it with other power adapters. This switch should be equipped with original power adapter.

05 Application



06 Common troubleshooting

- ⚠ The PWR indicator is not on after the power is connected → Check whether the power adapter and plug are connected correctly, whether the power cord is damaged, and whether the power adapter is damaged.
 - ⚠ Switch cannot communicate after power up → Check whether the switch indicator is on. If the indicator is off, the network cable is not connected. If the indicator is on, the communication fault is indicated.
 - ⚠ Switch network speed suddenly become very slow → Take off the plug and restart the switch.
- [If the above problems or other switch problems can not be solved, please contact us for technical support]

07 Product parameter

| | |
|-----------------------------------|--|
| Model | S800-8G |
| Product | All Gigabit 8 Ports Ethernet Switch |
| Fixed Port | 8↑10/100/1000M Base-TX RJ45 (Data) |
| Network Protocol | IEEE 802.3 IEEE 802.3i 10BASE-T IEEE 802.3u 100BASE-TX IEEE 802.3ab 1000BASE-T |
| Port Specification | 10/100/1000BaseT (X) Auto |
| Transmission Mode | Store and Forward (full wirespeed) |
| Bandwidth | 16Gbps |
| Packet Forwarding | 11.52Mpps |
| MAC Address | 2K |
| Buffer | 2.5M |
| Transmission Distance | 10BASE-T : Cat3,4,5 UTP(≤250 meter) 100BASE-TX : Cat5 or later UTP(150 meter) 1000BASE-TX : Cat6 or later UTP(150 meter) |
| Watt | ≤6W |
| LED Indicator | PWR:Power LED Port:(Green=10/100M LED+Orange=1000M LED) |
| Power | External Power DC: 12V 0.5A |
| Operating Temperature/Humidity | -10~+55°C; 5%~90% RH Non coagulation |
| Storage Temperature/Humidity | -40~+75°C; 5%~95% RH Non coagulation |
| Product size/Packing size (L*W*H) | 175mm*75mm*28mm 215mm*175mm*45mm |
| N.W/G.W (kg) | 0.4kg/0.6kg |
| Installation | Desktop |
| Lightning protection level | 3KV 8/20us; IP30 |
| Certificate | CE mark, commercial; CE/LVD EN60950; FCC Part 15 Class B; RoHS; |
| Warranty | Whole device for 1 year(Accessories not included) |



Sichuan hasivo electronics CO.,LTD.

Address: NO.5-2 Anping street, New District, Economic Development Zone, Meishan City,Sichuan Province,China.

Post code: 620010

Offical website: <http://www.hasivo.com>

©2013-2021 Sichuan hasivo electronics CO.,LTD. All rights reserved

After-sale service: 028-38288776

Technical service: 028-38119776