

➤ **Manual for S5800-48F-2TC**

Gigabit uplink switch

01 Product introduction

Product overview

hasivo independently developed S5800-48F-2TC Gigabit uplink switch with simple and convenient installation and maintenance means and rich business characteristics, which helps users to create security high performance network. The product can be widely used in the field of data exchange such as home network, multimedia classroom, security monitoring, wireless network and so on. Configure dual power supply to make sure the switch stable work.

Port performance

- ◆ Provide 48*10/100M RJ45 ports which can realize line speed forwarding.
- ◆ Provide 2 gigabit RJ45 and 2 SFP COMBO uplink ports for high-speed uplink transmission.
- ◆ Each port supports MDI/MDIX automatic flip and duplex / rate self negotiation.
- ◆ Support IEEE 802.3x full duplex flow control and backpressure half duplex flow control.
- ◆ Provide strong power, use 500MHz CPU, 4.1m cache, 12.6M packet forwarding rate.

02 Spare parts list



Network Switch



AC power cable



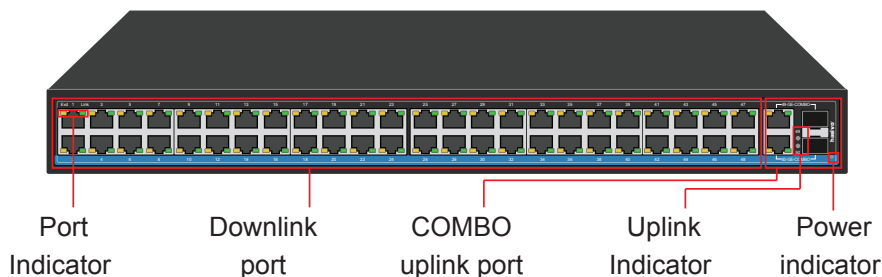
User manual+Warranty Card



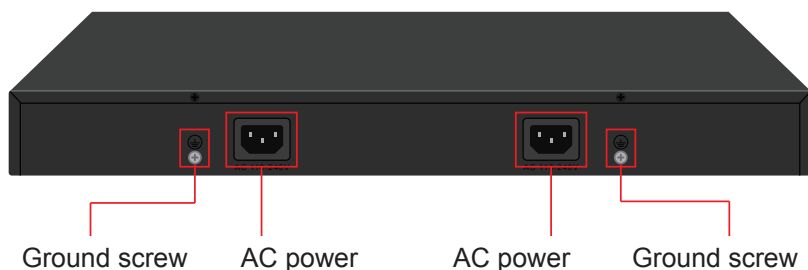
Rack hanger

03 Product display

Front



Back



Indicator definition:

Indicator		Status	Description
Power indicator: PWR		Green light is always on	Power on normal
		Always off	No power
1~48 port indicator	Green light 【10/100M】	light on	The corresponding uplink port works at 10/100M speed
		Light is flashing	The corresponding port has data transmission
		Always off	The corresponding port hasn't data transmission

	Orange light	\	It is extension indicator
49~50 port indicator	Green light 【10/100M】	light on	The corresponding uplink port works at 10/100M speed
		Light is flashing	The corresponding port has data transmission
		Always off	The corresponding port hasn't data transmission
	Orange light 【1000M】	light on	The corresponding uplink port works at 1000M speed
		Light is flashing	The corresponding port has data transmission
		Always off	The corresponding port hasn't data transmission
49~50 COMBO uplink indicator		Light is flashing	The corresponding COMBO port has data transmission
		Always off	The corresponding COMBO port hasn't data transmission

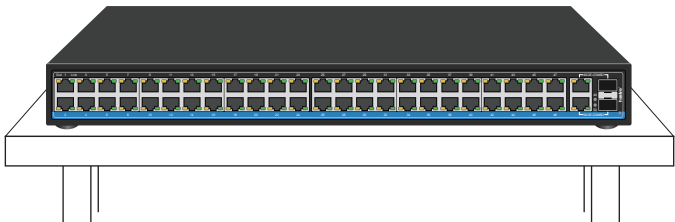
04 Installation&Points of attention

Checking before installation

- 1.Check whether the accessories are complete. If there is any omission, please contact us.
- 2.Check whether the power supply voltage is consistent with the working voltage of the switch,so as to avoid the equipment burning out due to high voltage.
- 3.Ensure that the installation position of the switch has certain ventilation and heat dissipation conditions.
- 4.Please keep the power off during installation to avoid potential safety hazards.
- 5.Please install the switch on a stable plane to avoid falling and damage.

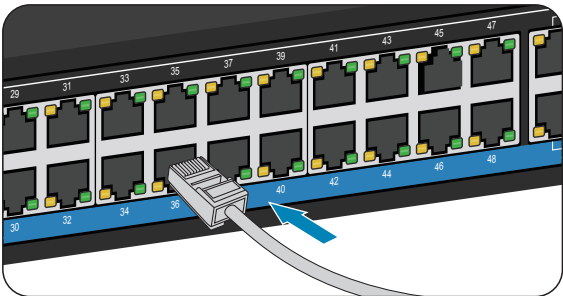
Install to desktop

- 1.Attach the four non slip rubber footmats that came with the device to the bottom four corners of the switch.
2. Place the switch on the horizontal desktop in the ventilation area.



- 3.Insert the data cable and SFP module

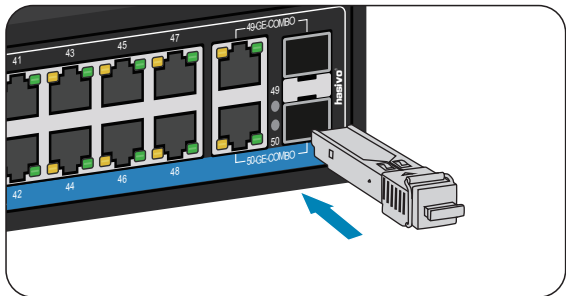
Insert the data cable



As shown in the figure, insert the crystal head of the data cable into the network port. When you hear a clear click, it indicates that the crystal head is successfully connected with the network port of the switch. Just plug in all the network cables of the network equipment in this way.

(Note: 1-24 network ports are downlink ports, which need to be connected with network equipment; 25-26 network ports are downlink ports which needs to be connected to router, server and other devices.)

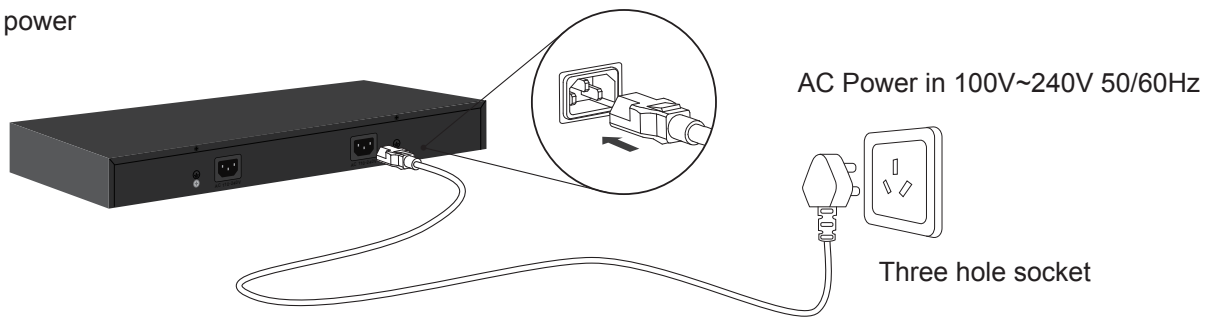
Install the SFP module



As shown in the figure, align the optical fiber module with the optical port of the SFP and insert it smoothly. When you hear a clear click, it indicates that the optical fiber module is installed successfully. Just install the two optical fiber modules in this way.

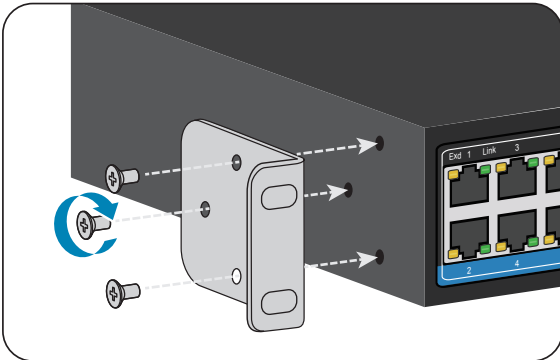
(Note: single fiber optical module should be used in pairs with 1310nm A and 1550nm B.Please purchase and check by yourself before installation)

4.Connected the power

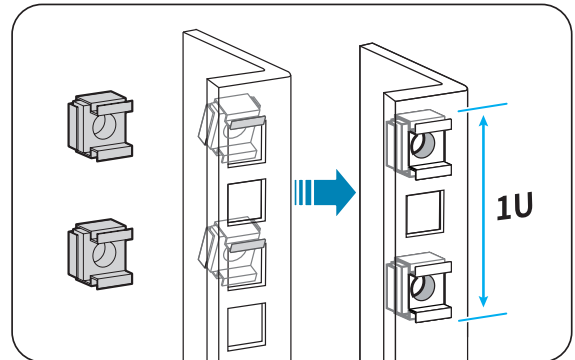


Install to cabinet/Rack

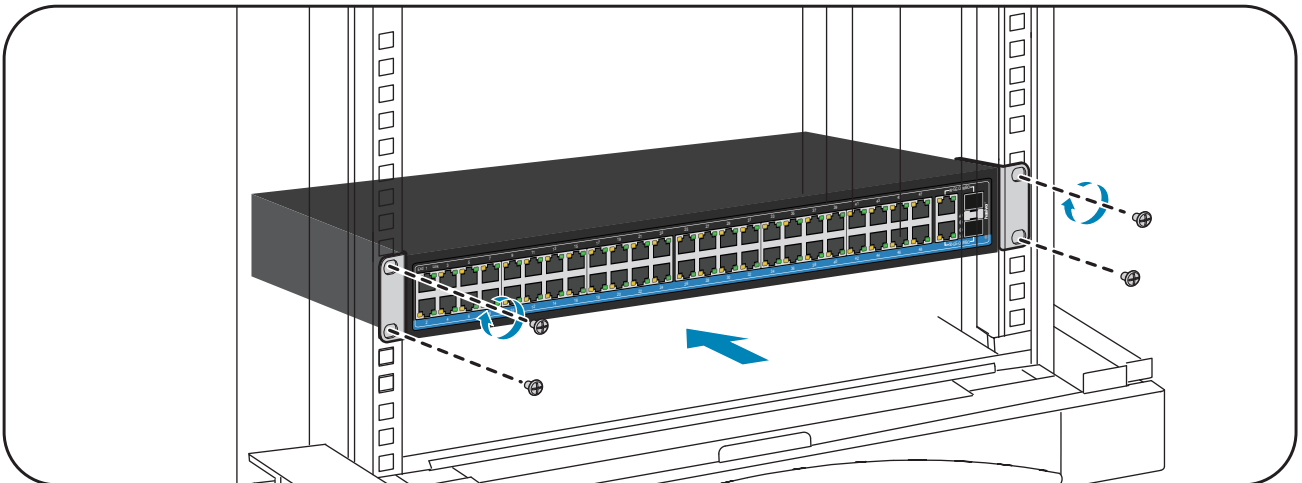
1. install the rack lug attached to the equipment to both sides of the switch with screws



2. Install floating nut on cabinet / rack



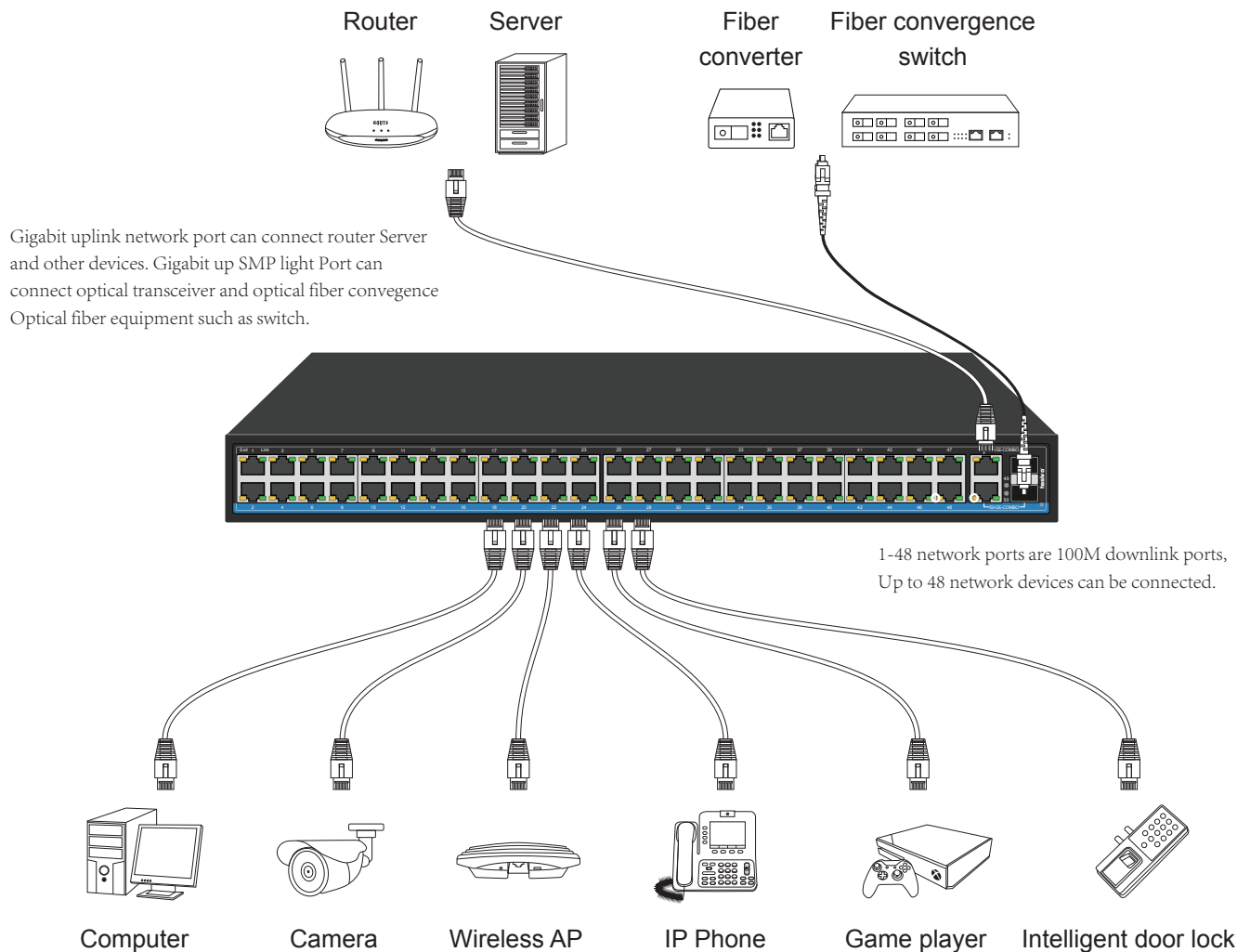
3. Put the switch installed with the lug into the cabinet and screw on the screw to complete the installation.



Points of attention

- 1.Do not stack heavy objects on the switch to avoid danger.
- 2.In order to avoid the risk of electric shock, please do not open the machine box when the switch is working, even if it is not powered on, please contact us in case of any problem.
- 3.Before cleaning the switch, pull out the power plug of the switch. Do not wipe it with wet fabric or clean it with liquid.
- 4.If the power adapter is damaged, do not replace it with other power adapters. This switch should be equipped with original power adapter.

05 Application



06 Common troubleshooting

- ⚠ The PWR indicator is not on after the power is connected → Check whether the power adapter and plug are connected correctly, whether the power cord is damaged, and whether the power adapter is damaged.
 - ⚠ Switch cannot communicate after power up → Check whether the switch indicator is on. If the indicator is off, the network cable is not connected. If the indicator is on, the communication fault is indicated.
 - ⚠ Switch network speed suddenly become very slow → Take off the plug and restart the switch.
- [If the above problems or other switch problems can not be solved, please contact us for technical support]

07 Product parameter

Model	S5800-48F-2TC
Product	48+2 Fast Ethernet Switch
Fixed Port	48*10/100Base-TX RJ45 port (Data) 2*COMBO
Network Protocol	IEEE 802.3 IEEE 802.3i 10BASE-T IEEE 802.3u 100BASE-TX IEEE 802.3ab1000BASE-T IEEE 802.3z 1000BASE-X
Function	N_Standard normal; V_Port isolation; S_Super distance
Port Specification	10/100/1000BaseT (X) Auto
Transmission Mode	Store and Forward (full wirespeed)
Bandwidth	17.6Gbps
Packet Forwarding	12.6Mpps
MAC Address	8K
Buffer	4.1M
Transmission Distance	10BASE-T : Cat3,4,5 UTP(≤250 meter) 100BASE-TX : Cat5 or later UTP(150 meter) 1000BASE-TX : Cat6 or later UTP(150 meter) 1000BASE-SX:62.5μm/50μm MMF(2m~550m) 1000BASE-LX:62.5μm/50μm MM(2m~550m) or 10μm SMF(2m~5000 m)
Watt	≤30W
LED Indicator	Power LED 49 50:SFP LED Port:(Green=10/100M LED+Orange=1000M LED)
Power	Built-in Power AC:100~240V 50-60Hz 1A
Operating Temperature/Humidity	-10~+55°C;5%~90% RH Non coagulation
Storage Temperature/Humidity	-40~+75°C;5%~95% RH Non coagulation
Product size/Packing size (L*W*H)	445mm*295mm*45mm 515mm*375mm*95mm
N.W/G.W (kg)	5kg/5.8kg
Installation	Rack-mount(optional machine hanger spare parts)
Lightning protection level	3KV 8/20us; IP30
Certificate	3C; CE mark, commercial;CE/LVD EN60950; FCC Part 15 Class B;RoHS;
Warranty	Whole device for 1 year(Accessories not included)

PS: We will try our best to check the errors in the printing and pictures, but hasivo will not be responsible for any possible omissions. The appearance, specifications, parameters, prices and supply conditions of the products listed on this page are subject to change without notice.



Sichuan hasivo electronics CO.,LTD.

Address: NO.9 Anping street, New District, Economic Development Zone, Meishan City,Sichuan Province,China.

Post code: 620010

Offical website: <http://www.hasivo.com>

©2013-2022 Sichuan hasivo electronics CO.,LTD. All rights reserved

After-sale service: 028-38288776

Technical service: 028-38119776