

➤ **Manual for S1100-4G-2S**

All gigabit ethernet switch

01 Product introduction

Product overview

hasivo independently developed S1100-4G-2S all gigabit ethernet switch with simple and convenient installation and maintenance means and rich business characteristics, which helps users to create security high performance network. The product can be widely used in the field of data exchange such as home network, multimedia classroom, security monitoring, wireless network and so on.

Port performance

- ◆ Provide 4*10/100/1000M RJ45 ports which can realize line speed forwarding.
- ◆ Provide 1 SFP independently uplink ports for high-speed uplink transmission.
- ◆ Each port supports MDI/MDIX automatic flip and duplex / rate self negotiation.
- ◆ Support IEEE 802.3x full duplex flow control and backpressure half duplex flow control.

02 Spare parts list



Network Switch



DC adapter



User manual+Warranty Card



Wall hanger

03 Product display

Front



Indicator 1000M RJ45

1000M SFP

Back



DC Power

Indicator definition:

Indicator		Status	Description
Power indicator: PWR		Green light is always on	Power on normal
		Always off	No power
Network indicator	Green	Light is flashing	The corresponding port works at 10/100M speed
	Orange	Light is flashing	The corresponding port works at 1000M speed
SFP indicator: 5、6		light is on	The corresponding port has data transmission

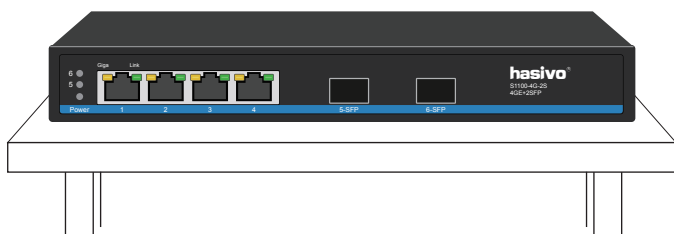
04 Installation&Points of attention

Checking before installation

- 1.Check whether the accessories are complete. If there is any omission, please contact us.
- 2.Check whether the power supply voltage is consistent with the working voltage of the switch,so as to avoid the equipment burning out due to high voltage.
- 3.Ensure that the installation position of the switch has certain ventilation and heat dissipation conditions.
- 4.Please keep the power off during installation to avoid potential safety hazards.
- 5.Please install the switch on a stable plane to avoid falling and damage.

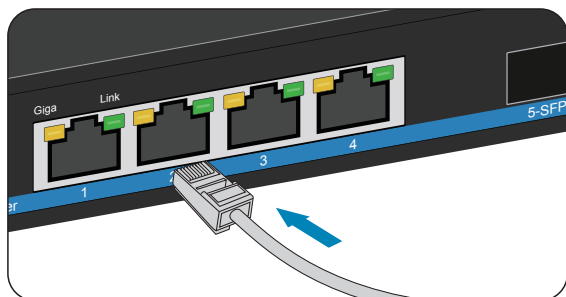
Install to desktop

1. Place the switch on the horizontal desktop in the ventilation area.



- 2.Insert the data cable and SFP module

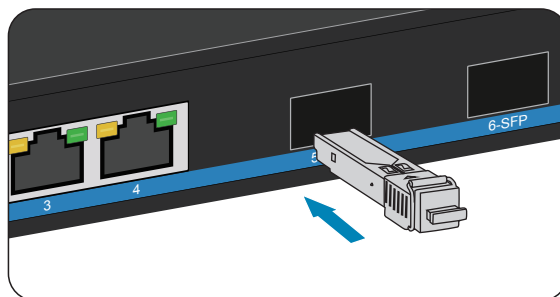
➤➤➤ Insert the data cable



As shown in the figure, insert the crystal head of the data cable into the network port. When you hear a clear click, it indicates that the crystal head is successfully connected with the network port of the switch. Just plug in all the network cables of the network equipment in this way.

(Note: 1-4 network ports are downlink ports, which need to be connected with network equipment; 5、6 network port is uplink ports which needs to be connected to router, server and other devices.)

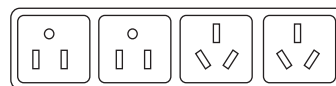
➤➤➤ Install the SFP module



As shown in the figure, align the optical fiber module with the optical port of the SFP and insert it smoothly. When you hear a clear click, it indicates that the optical fiber module is installed successfully. Just install the two optical fiber modules in this way.

(Note: single fiber optical module should be used in pairs with 1310nm A and 1550nm B. Please purchase and check by yourself before installation)

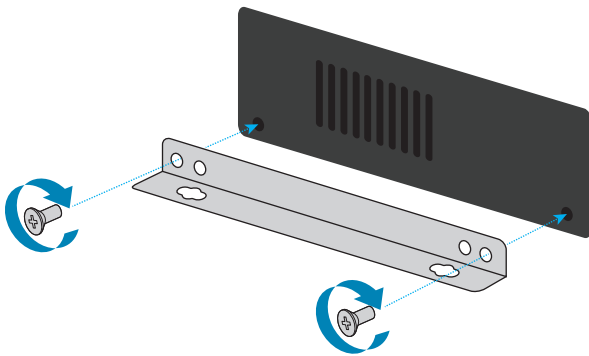
- 3.Connected the power



Plug into electricity supply

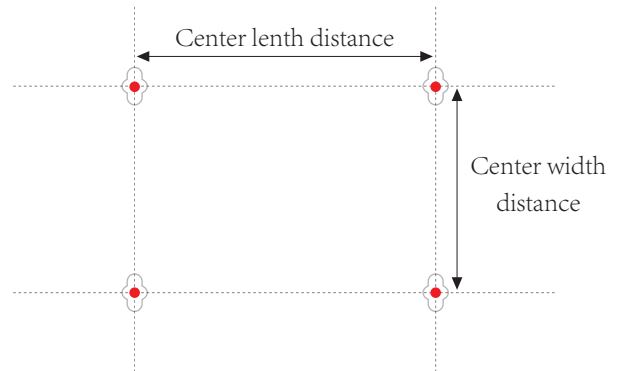
Fix the switch on the wall

1. Install the wall hanger with the screw on the sides of the switch

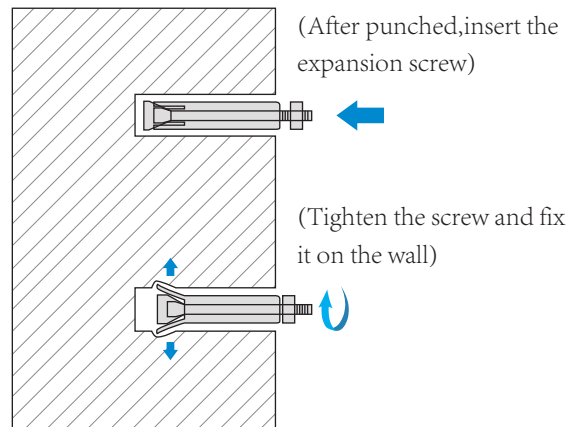
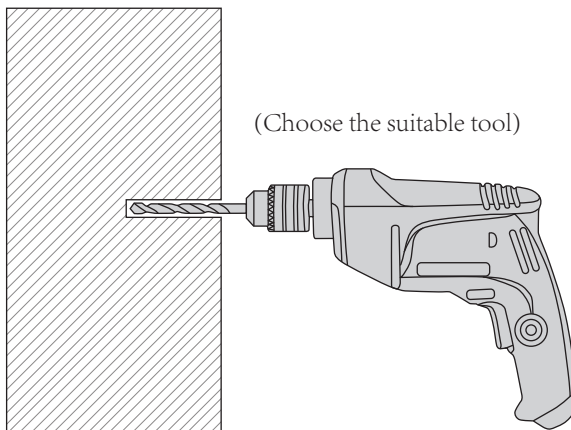


2. Mark the hole position on the wall

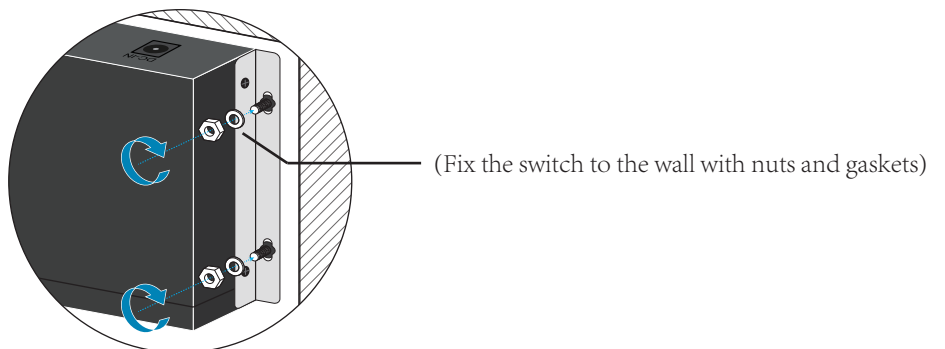
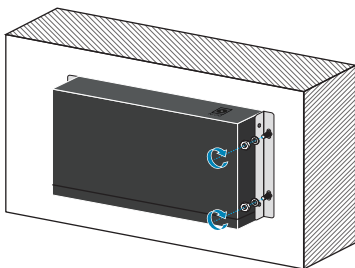
(Measure the distance between the wall hanger hole)



3. Punch and install expansion screw



4. Fix the switch on the wall

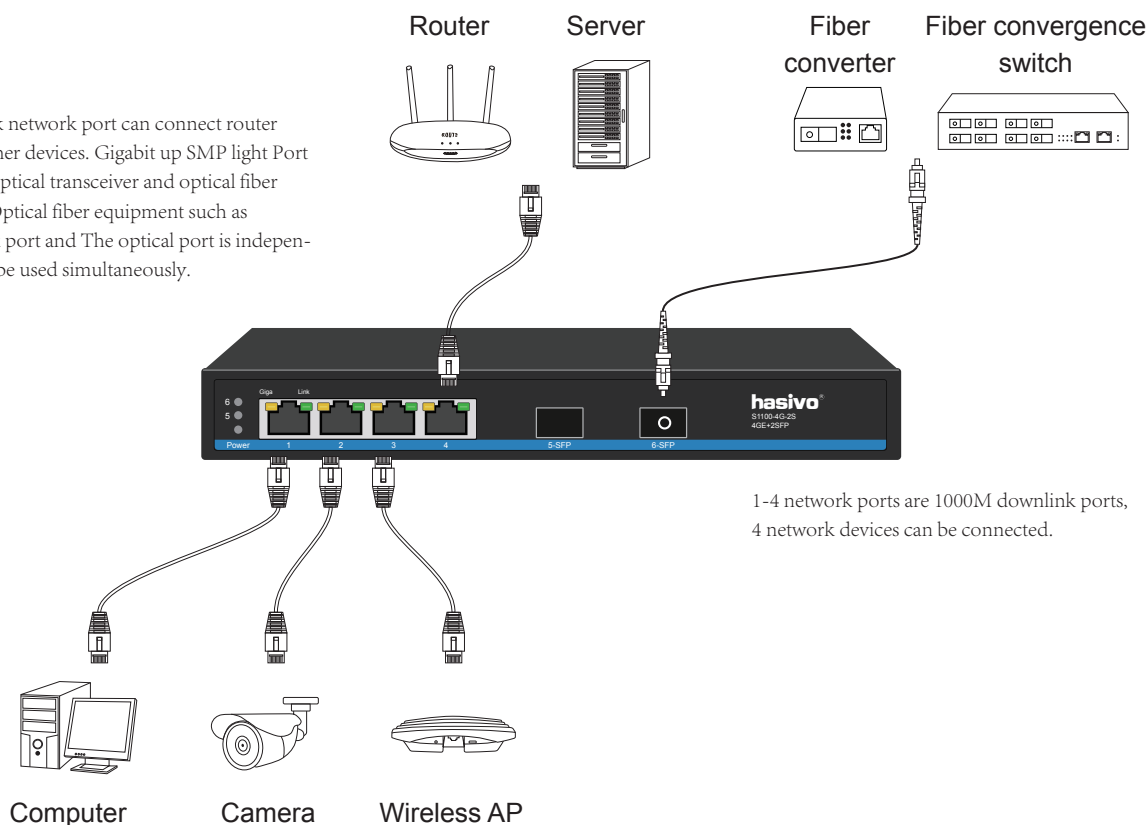


Points of attention

1. Do not stack heavy objects on the switch to avoid danger.
2. In order to avoid the risk of electric shock, please do not open the machine box when the switch is working, even if it is not powered on, please contact us in case of any problem.
3. Before cleaning the switch, pull out the power plug of the switch. Do not wipe it with wet fabric or clean it with liquid.
4. If the power adapter is damaged, do not replace it with other power adapters. This switch should be equipped with original power adapter.

05 Application

Gigabit uplink network port can connect router, Server and other devices. Gigabit up SFP light Port can connect optical transceiver and optical fiber convergence switch. Uplink port and The optical port is independent and can be used simultaneously.



06 Common troubleshooting

- ⚠ The PWR indicator is not on after the power is connected → Check whether the power adapter and plug are connected correctly, whether the power cord is damaged, and whether the power adapter is damaged.
 - ⚠ Switch cannot communicate after power up → Check whether the switch indicator is on. If the indicator is off, the network cable is not connected. If the indicator is on, the communication fault is indicated.
 - ⚠ Switch network speed suddenly become very slow → Take off the plug and restart the switch.
- [If the above problems or other switch problems can not be solved, please contact us for technical support]

07 Product parameter

Model	S1100-4G-2S
Product	All Gigabit 4+2 Ethernet Switch
Fixed Port	4*10/100/1000Base-TX RJ45 port (Data) 1*1000M SFP
Network Protocol	IEEE 802.3 IEEE 802.3i 10BASE-T IEEE 802.3u100BASE-TX IEEE 802.3ab1000BASE-T IEEE 802.3z 1000BASE-X IEEE 802.3x IEEE 802.1q VLAN
Function	N_Standard normal; V_Port isolation; C_Flow Control mode
Port Specification	10/100/1000BaseT (X) Auto
Transmission Mode	Store and Forward (full wirespeed)
Bandwidth	16Gbps
Packet Forwarding	14.44Mpps
MAC Address	4K
Buffer	2.5M
Transmission Distance	10BASE-T : Cat3,4,5 UTP(≤250 meter) 100BASE-TX : Cat5 or later UTP(150 meter) 1000BASE-TX : Cat6 or later UTP(150 meter) 1000BASE-SX:62.5μm/50μm MMF(2m~550m) 1000BASE-LX:62.5μm/50μm MM(2m~550m) or 10μm SMF(2m~5000m)
Watt	≤6W
LED Indicator	PWR:Power LED Port:(Green=10/100M LED+Orange=1000M LED) 5~6:(Gigabit upLink LED)
Power	External Power DC: 12V 1A
Operating Temperature/Humidity	-10~+55°C; 5%~90% RH Non coagulation
Storage Temperature/Humidity	-40~+75°C; 5%~95% RH Non coagulation
Product size/Packing size (L*W*H)	210mm*85mm*28mm 305mm*205mm*55mm
N.W/G.W (kg)	0.4kg/0.7kg
Installation	Desktop (optional Wall hanger)
Lightning protection level	3KV 8/20us; IP30
Certificate	3C; CE mark, commercial; CE/LVD EN60950; FCC Part 15 Class B; RoHS;
Warranty	Whole device for 1 year(Accessories not included)

PS: We will try our best to check the errors in the printing and pictures, but hasivo will not be responsible for any possible omissions. The appearance, specifications, parameters, prices and supply conditions of the products listed on this page are subject to change without notice.



Sichuan hasivo electronics CO.,LTD.

Address: NO.9 Anping street, New District, Economic Development Zone, Meishan City,Sichuan Province,China.

Post code: 620010

Offical website: <http://www.hasivo.com>

©2013-2022 Sichuan hasivo electronics CO.,LTD. All rights reserved

After-sale service: 028-38288776

Technical service: 028-38119776