

Full Gigabit Smart WEB Switch

➤ User's manual

S800W-16G-SE



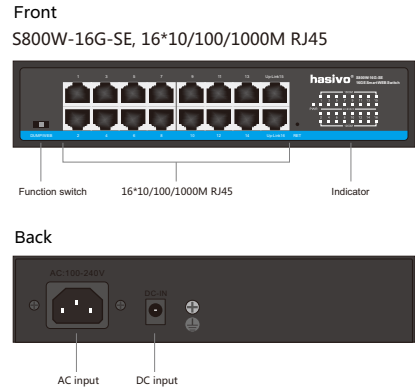
Product introduction

The "hasivo" full-gigabit simple network management switch is independently developed and designed for the construction of high-performance gigabit network requirements. It provides a comprehensive security protection system, complete QoS policies and rich VLAN functions. It is easy to manage and maintain, and can be applied to small and medium-sized enterprises, communities, and schools core layer.

Product characteristics

- ◆ Support port opening/closing, flow control, rate control and name customization;
- ◆ Support port address dynamic learning, port aggregation and IGMP V1/V2;
- ◆ Support traffic statistics, local entrance/exit monitoring, loopback detection, and loop blocking;
- ◆ Support 802.1Q VLAN, MTU VLAN and port VLAN;
- ◆ Rich QoS strategies, port priority, 802.1P priority, DSCP, priority port bandwidth control, port isolation, storm suppression jumbo frame configuration,MAC restriction;
- ◆ Support management through web pages;
- ◆ Support software upgrade, configuration backup, configuration recovery, system restart and software reset.

Product display



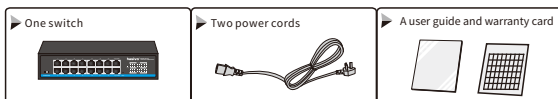
Indicator definition

Front indicator	state	Description
Power indicator: PWR	on	Power on
	off	Power off
Link/act indicator: 1~16	on	Link on
	off	Link off
1000M indicator: 1~16	on	Giga on
	off	Giga off

Function switch description

Function identification	Working mode	Function description
DUMP	Standard sharing	Support network sharing
WEB	Management model	Support WEB network management

Product supporting list



Product introduction, installation and precautions

For the safe installation and operation of the switch, it is recommended that you:

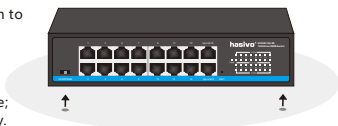
- Check that the power cord is securely wrapped around the AC power connector.
- Ensure proper heat dissipation and ventilation conditions around the switch.
- Do not stack heavy objects on the switch.

Install to desktop

The switch is usually placed on a clean desktop.

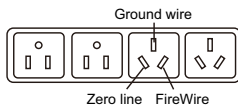
The operation is simple. Please follow the following instructions:

1. confirm that the platform is large, stable and firm enough to bear the weight of switches and accessories;
2. place the bottom of the switch upward on the platform;
3. remove the protective paper on the rubber surface of the four foot mats one by one and paste them on the four corners at the bottom of the chassis in a circular groove;
4. turn the switch over and place it on the desktop smoothly.



Power socket specification

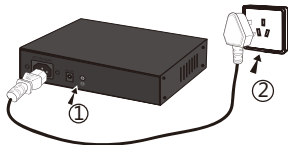
The switch power line adopts single-phase three wire power socket, and the middle pin is grounding wire, The left foot is the zero line and the right foot is the live line. Please check before operation.



1.2.1

Connect the power cord

1. Check that the selected power supply is consistent with the power supply requirements marked on the switch;
2. Built in without power adapter, directly connected to AC100 ~ 240V, 50 ~ 60Hz mains power is enough; As shown in Figure 1.2.2.



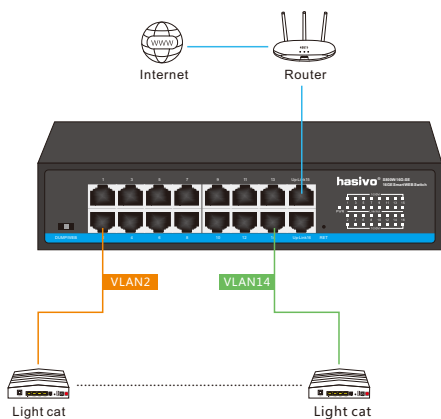
1.2.2

Matters Needing attention

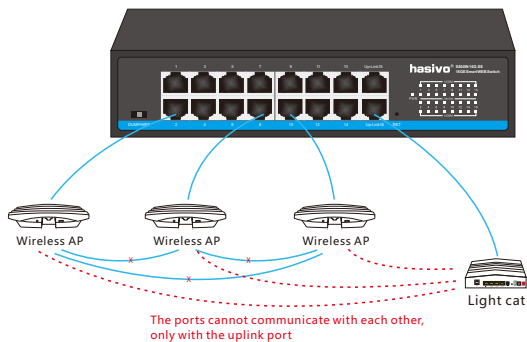
1. Please read the operating instructions carefully before use. Improper operation may cause damage to machine components.
2. Do not use it in places near the fire source.
3. Do not put the product into water or wet the built-in machine components.
4. Do not short circuit the positive and negative poles of the battery interface with metal conductors.
5. Do not disassemble or disassemble the internal parts of the product. If there is any damage, the manufacturer will not implement the insurance provisions.

Product application

Scheme 1: Example of WAN expansion



Scheme 2: Port protection example



Hardware parameters

Model	S800W-16G-SE
Product name	Full Gigabit 16 Port Smart Web switch
Fixed Port	16*10/100/1000Base-TX uplink RJ45 port (Data)
Reset Key	1
Bandwidth	56Gbps
Packet Forwarding	40.32Mpps
MAC	8K
Buffer	4M
Function switch	DUMP: ordinary network sharing WEB: SMART WEB network management
Transmission Distance	10BASE-T : Cat3,4,5 UTP(≤250 meter) 100BASE-TX : Cat5 or later UTP(150 meter) 1000BASE-TX : Cat6 or later UTP(150 meter)
Power dissipation	Full load power consumption: ≤15W
LED Indicator	Power: power indicator 1-16 port: (100M/1000M prompt light green)
Power	Built in AC : 100~240V 50-60Hz 0.4A
Operating Temperature /Humidity	-10 ~ +65°C ; 5% ~ 90% RH Non coagulation
Storage Temperature /Humidity	-40 ~ +75°C ; 5% ~ 95% RH Non coagulation
Product /Packing size (L*W*H)	210mm*105mm*45mm 250mm*180mm*70mm
N.W/G.W (kg)	0.7kg/1.0kg
Installation	Rack-mount
Lightning Protection level	6KV 8/20us ; IP30
Certificate	3C ; CE-EMC EN55032 ; CE-LVD EN62368 ; FCC Part 15 Class B ; RoHS ;
Warranty	Whole device for 1 year(Accessories not included)

Matters needing attention

To avoid equipment damage and personal injury caused by improper use, please follow the following precautions:

- During installation, keep the power off, wear anti-static wrist, and ensure that the anti-static wrist is in good contact with the skin to avoid potential damage. Potential safety hazards in;
- The switch can work normally only under the correct power supply. Please confirm that the power supply voltage is consistent with the voltage marked by the switch;
- Before the switch is powered on, please make sure that the power circuit will not be overloaded, so as not to affect the normal operation of the switch or even cause unnecessary damage;
- In order to avoid the risk of electric shock, do not open the shell when the switch is working, and do not open it by yourself even when it is not charged;
- Before cleaning the switch, pull out the power plug of the switch. Do not wipe it with wet fabric or clean it with liquid;
- The equipment installed in the rack is generally from bottom to top to avoid overload installation;
- Avoid placing other heavy objects on the surface of the switch to avoid accidents.

PS: We will try our best to check the errors in the printing and pictures, but hasivo will not be responsible for any possible omissions. The appearance, specifications, parameters, prices and supply conditions of the products listed on this page are subject to change without notice.

Sichuan Hasivo Video Electronics Co. Ltd.

Address: Dongpo District Meishan City Sichuan China

Zip Code: 620010 [Http://www.hasivo.com](http://www.hasivo.com)

©2013-2022 Sichuan hasivo Video Electronics Co., Ltd. all rights reserved title

Sales Service : 028-38288776

Technical Service : 028-38119776