

# Full Gigabit Smart WEB Switch

➤ User's manual

---

S600W-4G-1TS-SE



## Product introduction

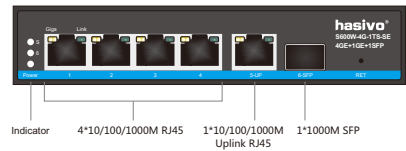
The "hasivo" full-gigabit simple network management switch is independently developed and designed for the construction of high-performance gigabit network requirements. It provides a comprehensive security protection system, complete QoS policies and rich VLAN functions. It is easy to manage and maintain, and can be applied to small and medium-sized enterprises, communities, and schools core layer.

## Product characteristics

- ◆ Support port opening/closing, flow control, rate control and name customization;
- ◆ Support port address dynamic learning, port aggregation and IGMP V1/V2;
- ◆ Support traffic statistics, local entrance/exit monitoring, loopback detection, and loop blocking;
- ◆ Support 802.1Q VLAN, MTU VLAN and port VLAN;
- ◆ Rich QoS strategies, port priority, 802.1P priority, DSCP, priority port bandwidth control, port isolation, storm suppression jumbo frame configuration, MAC restriction;
- ◆ Support management through web pages;
- ◆ Support software upgrade, configuration backup, configuration recovery, system restart and software reset.

## Product display

Front  
S600W-4G-1TS-SE, 4\*10/100/1000M RJ45+1\*10/100/1000M Uplink RJ45+1\*1000M SFP



Back



## Indicator definition

Front indicator		state	Description
Power indicator: Power		on	Power on
		off	Power off
Network indicator: 1~5	Link(green)	on	The corresponding port works at 10/100M
		off	Link off
	Giga(orange)	on	The corresponding port works at 1000M
		off	Giga off
SFP indicator:6		on	SFP on
		off	SFP off
Super far mode indicator: S		on	Super far mode on

## Product matching list

► One switch

► One DC power cord

► A user manual and warranty card

► Optional wall-mounted ear

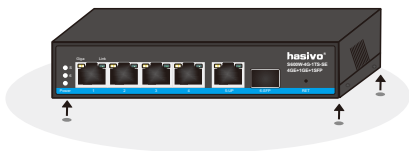
## Product installation and precautions

For the safe installation operation of switch,suggestion:

- Check up that the power wire is securely wrapped into the AC power connecto or not.
- Ensure the adequate heat dissipation and ventilation around the switch.
- Do not stack heavy objects on the switch.

### Desktop

An installation of switch on the desktop. The rubber foot pads must be installed on the bottom of four corners of switch to ensure enough space between equipment and surrounding objects for ventilation.



### Install to wall

The switch can be installed on the wall and the mounting brackets are attached to the side panels of the switch (one on each side) and secured with the screws provided with the unit. Then, install the switch to the wall mount using the screws supplied with the unit.



### Specification of power socket

The switch adopts single-phase three-wire power socket,the middle one is the G wire, the left one is the N wire,and the right one is the L wire. Please check before operation.

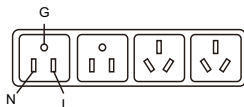
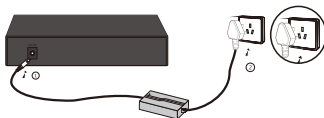


Figure1. 2. 1 three wire socket(Single phase)

### Connect the power wire

1. Check that the power supply is consistent with the power supply marked on the switch;
2. The external type requires a power adapter, which can be directly connected to the 12V 0.5A mains supply; As shown in Figure 1.2.2.



Power connection schematic diagram ,See 1.2.2

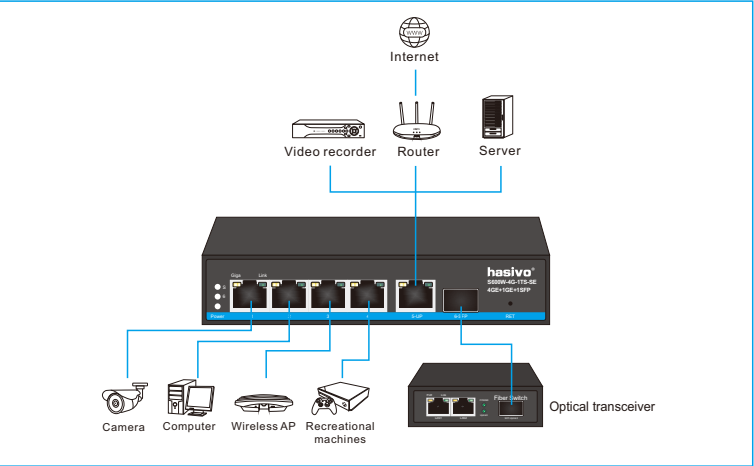
### The inspection after installation

Please check up the following items after installation:

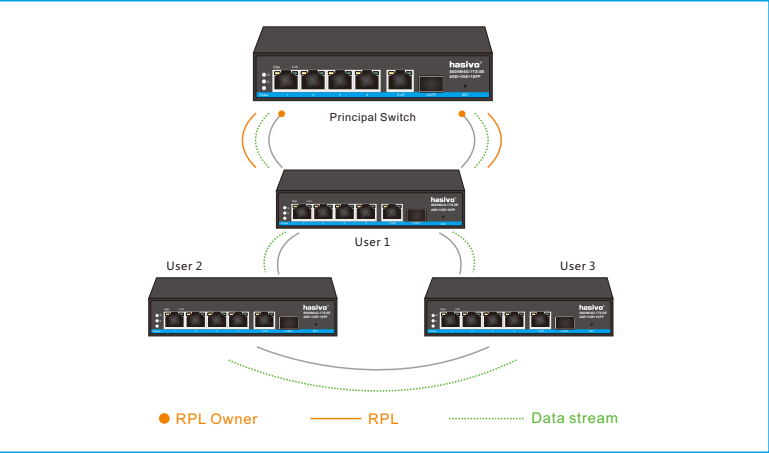
1. Enough cooling space around the switch and smooth air circulation
2. The power supply from the power socket conforms to the switch' requirements;
3. The power supply, switch, rack and other equipments are properly grounded;

**Product application**

**Scheme 1: Hybrid connection**



**Scheme 2: Ring network application**





## Hardware parameters

Model	S600W-4G-1TS-SE
Product name	Full Gigabit 5+1 Smart Web switch
Fixed Port	4*10/100/1000Base-TX RJ45 1*10/100/1000Base-TX Uplink RJ45 1*1000M SFP
Reset Key	1
Bandwidth	12Gbps
Packet Forwarding	8.64Mpps
MAC	2K
Buffer	2.5M
Transmission Distance	10BASE-T : Cat3,4,5 UTP(≤250 meter) 100BASE-TX : Cat5 or later UTP(150 meter) 1000BASE-TX : Cat6 or later UTP(150 meter)
Power dissipation	Full load power consumption: ≤7W
LED Indicator	Power: power indicator Port: (network connection indicator green/100M+yellow/1000M) 6: Light port indicator S: Super far mode on indicator
Power	External switch power supply DC: 12V 0.5A
Operating Temperature /Humidity	-10 ~ +65°C ; 5% ~ 90% RH Non coagulation
Storage Temperature /Humidity	-40 ~ +75°C ; 5% ~ 95% RH Non coagulation
Product /Packing size ( L*W*H )	140mm*80mm*28mm 197mm*170mm*40mm
N.W/G.W ( kg )	0.3kg/0.5kg
Installation	Desktop type (optional with wall hanging)
Lightning Protection level	6KV 8/20us ; IP30
Certificate	3C ; CE-EMC EN55032 ; CE-LVD EN62368 ; FCC Part 15 Class B ; RoHS ;
Warranty	Whole device for 1 year(Accessories not included)

## **Matters needing attention**

To avoid equipment damage and personal injury caused by improper use, please follow the following precautions:

- During installation, keep the power off, wear anti-static wrist, and ensure that the anti-static wrist is in good contact with the skin to avoid potential damage. Potential safety hazards in;
- The switch can work normally only under the correct power supply. Please confirm that the power supply voltage is consistent with the voltage marked by the switch;
- Before the switch is powered on, please make sure that the power circuit will not be overloaded, so as not to affect the normal operation of the switch or even cause unnecessary damage;
- In order to avoid the risk of electric shock, do not open the shell when the switch is working, and do not open it by yourself even when it is not charged;
- Before cleaning the switch, pull out the power plug of the switch. Do not wipe it with wet fabric or clean it with liquid;
- The equipment installed in the rack is generally from bottom to top to avoid overload installation;
- Avoid placing other heavy objects on the surface of the switch to avoid accidents.

PS: We will try our best to check the errors in the printing and pictures, but hasivo will not be responsible for any possible omissions. The appearance, specifications, parameters, prices and supply conditions of the products listed on this page are subject to change without notice.

---

Sichuan Hasivo Video Electronics Co. Ltd.

Address: Dongpo District Meishan City Sichuan China

Zip Code: 620010 [Http://www.hasivo.com](http://www.hasivo.com)

©2013-2022 Sichuan hasivo Video Electronics Co., Ltd. all rights reserved title

Sales Service : 028-38288776

Technical Service : 028-38119776