

Gigabit Smart WEB PoE Switch

➤ User 's manual

S2800WP-24G-2S-SE



Product introduction

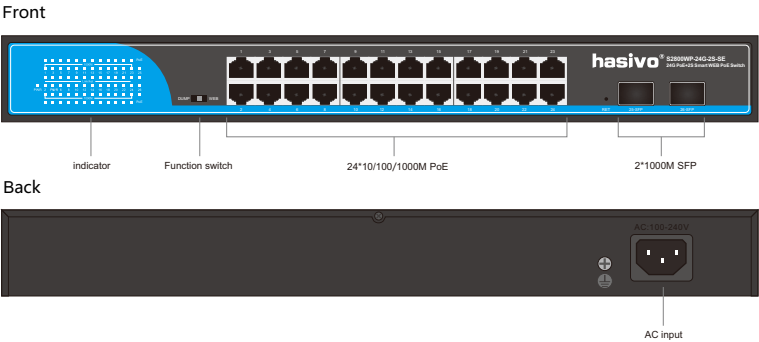
"hasivo" fully gigabit lightweight network management PoE switch is independently developed and designed to meet the requirements of building high-performance gigabit networks. It provides a comprehensive security protection system, comprehensive QoS policies, and rich VLAN functions. It is easy to manage and maintain, and can be applied to the core layer of small and medium-sized enterprises, communities, and schools.

Product characteristics

- ◆ Support port opening/closing, flow control, rate control, and name customization;
- ◆ Support dynamic learning of port addresses, port aggregation, and IGMP V1/V2;
- ◆ Support IEEE 802.3af/at/poe++/BT;
- ◆ Support traffic statistics, local entrance/exit monitoring, loop back detection, and loop blocking;
- ◆ Support 802.1Q VLAN、MTU VLAN、Port VLAN;
- ◆ Rich QoS strategies, including port priority, 802.1P priority, DSCP, priority port bandwidth control, port isolation, and storm suppression giant framesConfiguration, MAC restrictions;
- ◆ Support management through web pages;
- ◆ Support software upgrade, configuration backup, configuration recovery, system restart, and software reset.

Product display

S2800WP-24G-2S-SE, 24*10/100/1000M PoE+2*1000M SFP



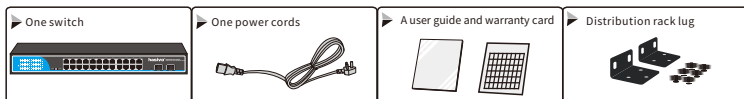
Indicator definition

Front indicator	state	Description
Power indicator: PWR	on	Power on
	off	Power off
Link/act indicator:1-24	on	The corresponding port works at 10/100M speed
	off	Link off
1000M indicator:1-24	on	The corresponding port works at 1000M speed
	off	Giga off
PoE indicator:1-24	on	PoE on
	off	PoE off
SFP indicator: 25-26	on	SFP on
	off	SFP off

Function switch description

Function identification	Working mode	Function description
DUMP	Standard sharing	Support network sharing
WEB	management model	Support for WEB network management

Product supporting list



Product introduction, installation and precautions

For the safe installation and operation of the switch, it is recommended that you:

- Check that the power cord is securely wrapped around the AC power connector.
- Ensure proper heat dissipation and ventilation conditions around the switch.
- Do not stack heavy objects on the switch.

Mounting to rack

1. Check the grounding and stability of the rack
2. Install the two L-shaped brackets in the accessories on both sides of the switch panel and fix them with the screws provided in the accessories, as shown in Figure 1.1.1.
3. Place the switch in a proper position in the rack and supported by the bracket.4. Fix the L-shaped bracket on the guide grooves fixed at both ends of the rack with screws to ensure that the switch is stably and horizontally installed on the rack, as shown in Figure 1.1.2.

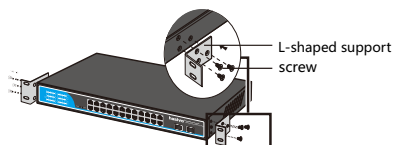


Figure 1.1.1 installation diagram of switch

Power socket specification

The switch power line adopts single-phase three wire power socket, and the middle pin is grounding wire, The left foot is the zero line and the right foot is the live line. Please check before operation. As shown in Figure 1.2.1.

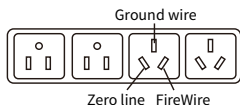


Figure 1.2.1 single phase three wire power socket

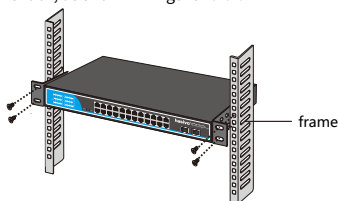


Figure 1.1.2 installation diagram of switch

Connect the power cord

1. Check that the selected power supply is consistent with the power supply requirements marked on the switch;2. Built in without power adapter, directly connected to AC100 ~ 240V,50 ~ 60Hz mains power is enough; As shown in Figure 1.2.2.

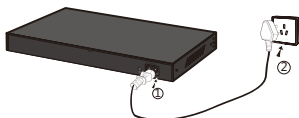


Figure 1.2.2 power connection diagram

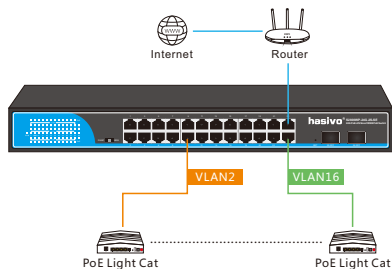
Post installation inspection

After installation, check the following:

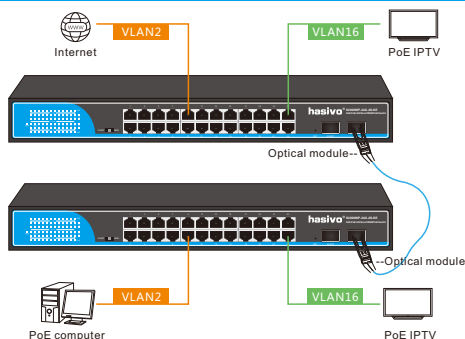
1. Check whether there is enough heat dissipation space around the switch and whether the air circulation is smooth;
2. Check whether the power supply of the power socket meets the specification of the switch;
3. Check that the power supply, switch, rack and other equipment have been properly grounded;

Product application

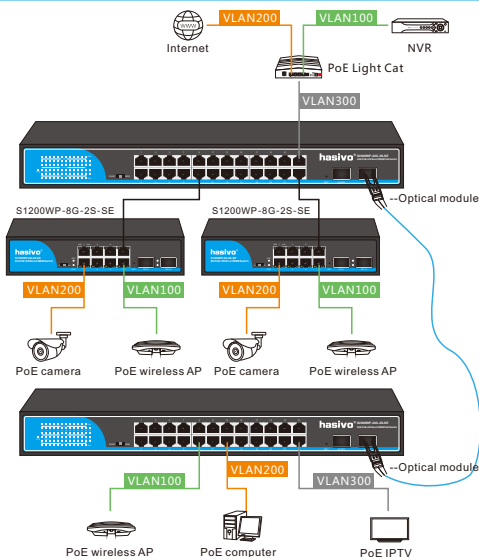
Scheme 1: Example of expanding WAN ports



Scheme 2: VLAN single line multiplexing



Scheme 3: Aggregating Applications



Hardware parameters

Model	S2800WP-24G-2S-SE
Product name	24+2 All Gigabit Smart Web PoE Switch
Fixed Port	24* 10/100/1000base TX PoE 2* 1000M SFP
PoE Ports	1-2 port supports IEEE802.3af/at/poe++/bt, max 90W PoE out 3-24 port supports IEEE802.3af/at, max 30W/port, PoE out
PoE Pin	Af/at/bt: 12+ 45+ ; 36- 78- Af/at: 12+ 36-
PoE Bridge	max 300W
Reset Key	1
Bandwidth	56Gbps
Packet Forwarding	40.32Mpps
MAC	8K
Buffer	4M
Function switch	DUMP: Ordinary Network Sharing WEB: SMART WEB Network Management
Transmission Distance	10BASE-T : Cat3,4,5 UTP(=250 meter) 100BASE-TX : Cat5 or later UTP(=100 meter) 1000BASE-TX : Cat6 or later UTP(=1000 meter)
Power dissipation	Full load power consumption: ≤300W
LED Indicator	PWR: power indicator 25-26 ports: (100M/1000M prompt light green) 1-24 ports: (10M/100M/1000M prompt light green)
Power	Built in AC : 100 ~ 240V 50-60Hz 4A
Operating Temperature /Humidity	-10 ~ +65°C ; 5% ~ 90% RH Non coagulation
Storage Temperature /Humidity	-40 ~ +75°C ; 5% ~ 95% RH Non coagulation
Product /Packing size (L*W*H)	440mm*220mm*45mm 497mm*299mm*93mm
N.W/G.W (kg)	2.7kg/3.4kg
Installation	Desktop type (optional with wall hanging + rack lug accessories)
Lightning Protection level	6KV 8/20us ; IP30
Certificate	3C ; CE-EMC EN55032 ; CE-LVD EN62368 ; FCC Part 15 Class B ; RoHS ;
Warranty	Whole device for 1 year(Accessories not included)

Matters needing attention

To avoid equipment damage and personal injury caused by improper use, please follow the following precautions:

- During installation, keep the power off, wear anti-static wrist, and ensure that the anti-static wrist is in good contact with the skin to avoid potential damage. Potential safety hazards in;
- The switch can work normally only under the correct power supply. Please confirm that the power supply voltage is consistent with the voltage marked by the switch;
- Before the switch is powered on, please make sure that the power circuit will not be overloaded, so as not to affect the normal operation of the switch or even cause unnecessary damage;
- In order to avoid the risk of electric shock, do not open the shell when the switch is working, and do not open it by yourself even when it is not charged;
- Before cleaning the switch, pull out the power plug of the switch. Do not wipe it with wet fabric or clean it with liquid;
- The equipment installed in the rack is generally from bottom to top to avoid overload installation;
- Avoid placing other heavy objects on the surface of the switch to avoid accidents.

PS: We will try our best to check the errors in the printing and pictures, but hasivo will not be responsible for any possible omissions. The appearance, specifications, parameters, prices and supply conditions of the products listed on this page are subject to change without notice.

Sichuan Hasivo Video Electronics Co. Ltd.

Address: Dongpo District Meishan City Sichuan China

Zip Code: 620010 [Http://www.hasivo.com](http://www.hasivo.com)

©2013-2022 Sichuan hasivo Video Electronics Co., Ltd. all rights reserved title

Sales Service : 028-38288776

Technical Service : 028-38119776