

# Full Gigabit Smart WEB Switch

➤ User 's manual

---

S2800W-24G-2TS-SE



Product introduction

The "hasivo" full-gigabit simple network management switch is independently developed and designed for the construction of high-performance gigabit network requirements. It provides a comprehensive security protection system, complete QoS policies and rich VLAN functions. It is easy to manage and maintain, and can be applied to small and medium-sized enterprises, communities, and schools core layer.

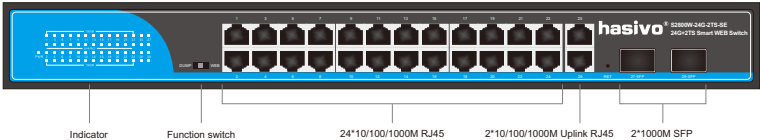
Product characteristics

- Support port opening/closing, flow control, rate control and name customization;
- Support port address dynamic learning, port aggregation and IGMP V1/V2;
- Support traffic statistics, local entrance/exit monitoring, loopback detection, and loop blocking;
- Support 802.1Q VLAN, MTU VLAN and port VLAN;
- Rich QoS strategies, port priority, 802.1P priority, DSCP, priority port bandwidth control, port isolation, storm suppression jumbo frame configuration,MAC restriction;
- Support management through web pages;
- Support software upgrade, configuration backup, configuration recovery, system restart and software reset.

Product display

S2800W-24G-2TS-SE, 24\*10/100/1000M Rj45+2\*10/100/1000M Uplink Rj45+2\*1000M SFP

Front



Back



Indicator definition

| Front indicator          | state | Description |
|--------------------------|-------|-------------|
| Power indicator: PWR     | on    | Power on    |
|                          | off   | Power off   |
| Link/act indicator: 1~26 | on    | Link on     |
|                          | off   | Link off    |
| 1000M indicator: 1~26    | on    | Giga on     |
|                          | off   | Giga off    |
| SFP indicator: 27~28     | on    | SFP on      |
|                          | off   | SFP off     |

Function switch description

| Function identification | Working mode     | Function description           |
|-------------------------|------------------|--------------------------------|
| DUMP                    | Standard sharing | Support network sharing        |
| WEB                     | Management model | Support WEB network management |

Product supporting list

➤ One switch

➤ One power cords

➤ A user guide and warranty card

➤ Distribution rack lug

## Product introduction, installation and precautions

For the safe installation and operation of the switch, it is recommended that you:

- Check that the power cord is securely wrapped around the AC power connector.
- Ensure proper heat dissipation and ventilation conditions around the switch.
- Do not stack heavy objects on the switch.

### Mounting to rack

1. Check the grounding and stability of the rack
2. Install the two L-shaped brackets in the accessories on both sides of the switch panel and fix them with the screws provided in the accessories, as shown in Figure 1.1.1.
3. Place the switch in a proper position in the rack and supported by the bracket.4. Fix the L-shaped bracket on the guide grooves fixed at both ends of the rack with screws to ensure that the switch is stably and horizontally installed on the rack, as shown in Figure 1.1.2.

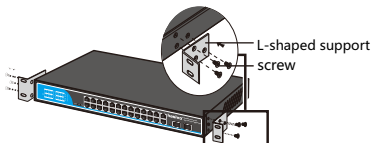


Figure 1.1.1 installation diagram of switch

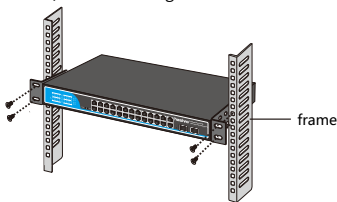


Figure 1.1.2 installation diagram of switch

### Power socket specification

The switch power line adopts single-phase three wire power socket, and the middle pin is grounding wire. The left foot is the zero line and the right foot is the live line. Please check before operation. As shown in Figure 1.2.1.

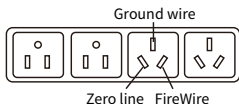


Figure 1.2.1 single phase three wire power socket

### Connect the power cord

1. Check that the selected power supply is consistent with the power supply requirements marked on the switch;2. Built in without power adapter, directly connected to AC100 ~ 240V,50 ~ 60Hz mains power is enough; As shown in Figure 1.2.2.



Figure 1.2.2 power connection diagram

### Connect The Grounding Column

In order to avoid equipment damage caused by various external factors, it is recommended to connect the equipment to the grounding column; As shown in figure 3.3.2

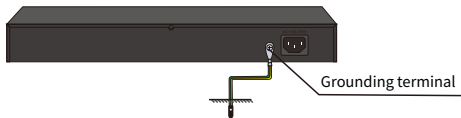


Figure 3.3.2

Note: This product does not provide grounding column and grounding cable.  
If necessary, please buy it yourself.

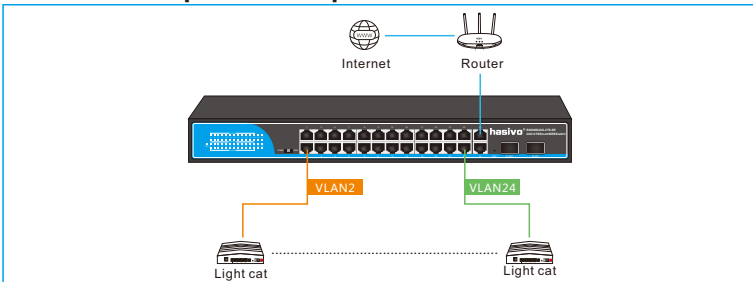
### Post installation inspection

After installation, check the following:

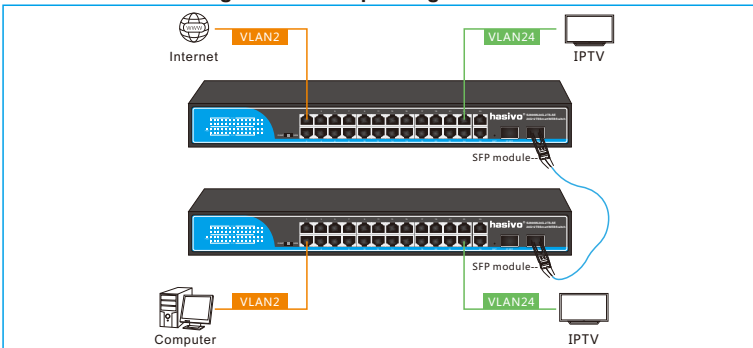
1. Check whether there is enough heat dissipation space around the switch and whether the air circulation is smooth;
2. Check whether the power supply of the power socket meets the specification of the switch;
3. Check that the power supply, switch, rack and other equipment have been properly grounded;

## Product application

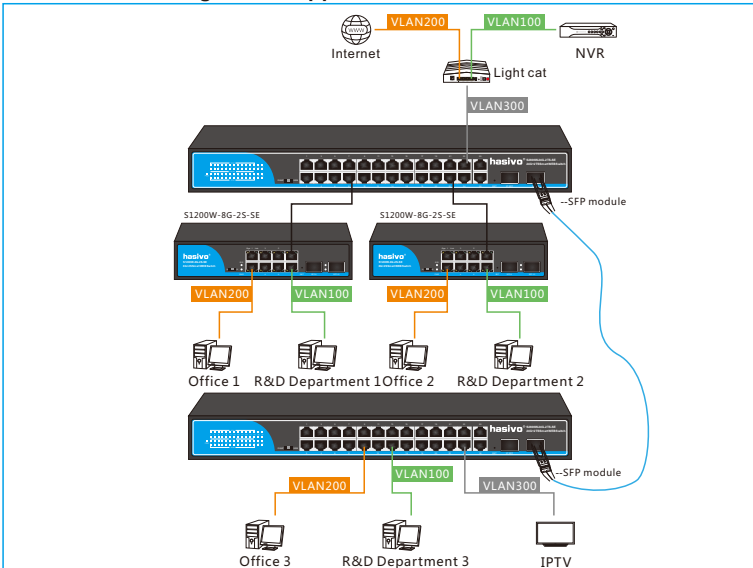
### Scheme 1: Example of WAN expansion



### Scheme 2: VLAN single-line multiplexing



### Scheme 3: Convergence of applications





## Hardware parameters

|                                 |  |
|---------------------------------|--|
| Model                           | S2800W-24G-2TS-SE  |
| Product name                    | Full Gigabit 26+2 Gigabit Smart Web Switch   |
| Fixed Port                      | 24* 10/100/10000base TX RJ45 ports<br>2* 10/100/10000base TX Uplink RJ45 ports<br>2* 1000M SFP                                 |
| Reset Key                       | 1  |
| Bandwidth                       | 56Gbps   |
| Packet Forwarding               | 40.32Mpps  |
| MAC                             | 8K   |
| Buffer                          | 4M   |
| Function switch                 | DUMP: ordinary network sharing<br>WEB: SMART WEB network management  |
| Transmission Distance           | 10BASE-T : Cat3,4,5 UTP(≤250 meter)<br>100BASE-TX : Cat5 or later UTP(150 meter)<br>1000BASE-TX : Cat6 or later UTP(150 meter) |
| Power dissipation               | Full load power consumption: ≤30W  |
| LED Indicator                   | PWR: power indicator<br>27-28 ports: (100M / 1000M prompt light green)<br>1-26 ports: (10M/100M / 1000M prompt light green)    |
| Power                           | Built in AC : 100~240V 50-60Hz 0.4A  |
| Operating Temperature /Humidity | -10~+65°C ; 5%~90% RH Non coagulation  |
| Storage Temperature /Humidity   | -40~+75°C ; 5%~95% RH Non coagulation  |
| Product /Packing size ( L*W*H ) | 440mm*220mm*45mm<br>497mm*299mm*93mm   |
| N.W/G.W ( kg )                  | 1.6kg/2.2kg  |
| Installation                    | Desktop type (optional with wall hanging + rack lug accessories)   |
| Lightning Protection level      | 6KV 8/20us ;<br>IP30   |
| Certificate                     | 3C ; CE-EMC EN55032 ; CE-LVD EN62368 ;<br>FCC Part 15 Class B ; RoHS ;   |
| Warranty                        | Whole device for 1 year(Accessories not included)  |

## **Matters needing attention**

To avoid equipment damage and personal injury caused by improper use, please follow the following precautions:

- During installation, keep the power off, wear anti-static wrist, and ensure that the anti-static wrist is in good contact with the skin to avoid potential damage. Potential safety hazards in;
- The switch can work normally only under the correct power supply. Please confirm that the power supply voltage is consistent with the voltage marked by the switch;
- Before the switch is powered on, please make sure that the power circuit will not be overloaded, so as not to affect the normal operation of the switch or even cause unnecessary damage;
- In order to avoid the risk of electric shock, do not open the shell when the switch is working, and do not open it by yourself even when it is not charged;
- Before cleaning the switch, pull out the power plug of the switch. Do not wipe it with wet fabric or clean it with liquid;
- The equipment installed in the rack is generally from bottom to top to avoid overload installation;
- Avoid placing other heavy objects on the surface of the switch to avoid accidents.

PS: We will try our best to check the errors in the printing and pictures, but hasivo will not be responsible for any possible omissions. The appearance, specifications, parameters, prices and supply conditions of the products listed on this page are subject to change without notice.

---

Sichuan Hasivo Video Electronics Co. Ltd.

Address: Dongpo District Meishan City Sichuan China

Zip Code: 620010 [Http://www.hasivo.com](http://www.hasivo.com)

©2013-2022 Sichuan hasivo Video Electronics Co., Ltd. all rights reserved title

Sales Service : 028-38288776

Technical Service : 028-38119776