

# Unmanaged PoE Switch

## ➤ User Manual

---

**S600P-4G-2G**



# 1 Overview

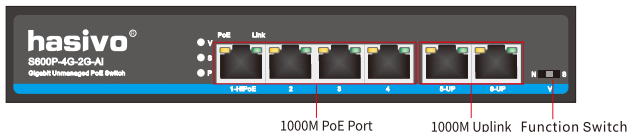
"**Hasivo**" Non managed Ai PoE switch can automatically detect compliance with IEEE802.13af / at PoE ++ / hipoe standard power receiving equipment and To supply power for it, hipoe and poedog functions are added to the basic functions of ordinary Poe switch to solve the problem of high-power outdoor ball machine and largeThe power supply of high-power wireless AP and other high-power equipment can be repaired automatically after the crash, so as to solve the problem of going to the site to restart the switch once a month;Solve the installation requirements of multiple switches.

## Features

- ◆ PoE dog function detects the status of Poe electric equipment in real time; When the device end is abnormal, the port will be automatically restarted and Poe power supply will be restored,Achieve unattended
- ◆ Hipoe function: the first port can output hipoe\_ 60W
- ◆ International Poe general standard IEEE802 3af / at PoE ++ / hipoe, supporting full port standard detection function
- ◆ Support the power supply of Poe equipment such as wireless access point (AP) and network monitoring camera through Cat 5 / Cat 6 Ethernet cable
- ◆ Support automatic port flip (auto MDI / mdix)
- ◆ Support port lightning protection (Level II lightning protection requirements)
- ◆ Single port Poe power up to 30W
- ◆ Zero configuration feature, automatic supply to adaptive equipment
- ◆ Panel indicator light monitors working status and helps fault analysis

# 2 Product Dispay

S600P-4G-2G, 4个10/100/1000M PoE Port+2\*1000M Uplink Port



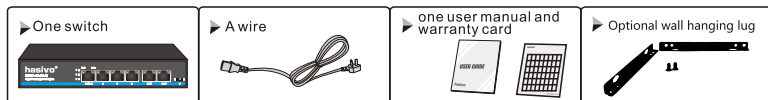
## Function mark

Function mark	mode	Descriptions
N	Standard sharing	All ports communicate freely, suitable for common data transmission environment
V	Port isolation	The downlink ports are isolated from each other and upload and download data through the uplink port.Inhibit broadcasting storms/virus attacks and other network failures
S	Ultra transmission	Limiting the downlink port's speed at 10M to realize 250m ultra-long transmission

## Indicator

Indicator		Status	Description
Power LED:P		Always ON	Normal
		Always OFF	Power Unconnected
		Flashes	Port circuit or current over-loaded
V		Always ON	Port isolation mode on
S		Always ON	Ultra far mode on
PoE LED	Orange	Always ON	Powered equipments connected and power supply narmly
		Always OFF	No powered equipments connected or no power supply
	Green	Always ON	Network signal communicates at corresponding port
		Always OFF	Network signal not communicate at corresponding port

## Product list



### 3 Product installation and precautions

For the safe installation and operation of the switch, it is recommended that you:

- Check that the power cord is securely wrapped around the AC power connector.
- Ensure proper heat dissipation and ventilation conditions around the switch.
- Do not stack heavy objects on the switch.

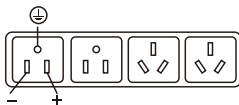
#### Desktop installation

When installing the switch on the desktop, the device must be placed horizontally on the desktop and kept stable. Please leave enough space between the equipment and other surrounding objects for ventilation.



#### Power socket specification

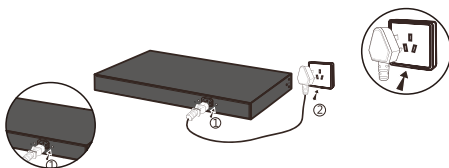
The power line of the switch adopts a single-phase three wire power socket, the middle pin is the grounding wire, the left pin is the zero wire, and the right pin is the live wire. Please check before operation.



1.2.1

#### Connect the power cord

1. Check that the power supply is consistent with the power supply marked on the switch;
2. Built in without power adapter, it can be directly connected to AC100 ~ 240V, 50 ~ 60Hz mains power; As shown in Figure 1.2.2.



1.2.2

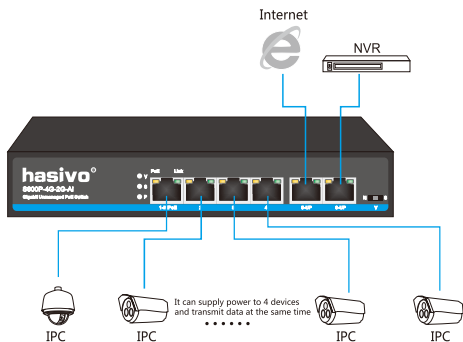
#### Inspection after installation

Please check the following items after installation:

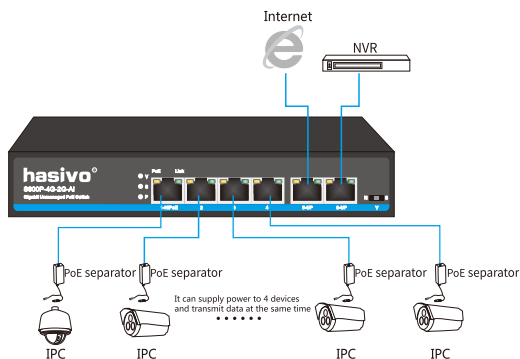
1. check whether there is enough space for heat exchange, air circulation is smooth;
2. check the power supply socket power supply switch is in accordance with the specifications;
3. check the power supply, switchboard, rack and other equipment have been properly grounded;

## 4 Product application

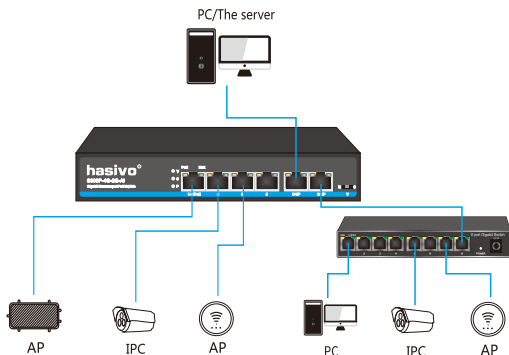
### Option 1



### Option 2



### Option 3



Model	S600P-4G-1TS
Product	Full Gigabit 5+1 PoE Switch
Port	4*10/1000Base-TX PoE Port (Data/Power) 2*10/1000Base-TX uplink RJ45Port (Data)
Network Protocol	IEEE 802.3 IEEE 802.3i 10BASE-T IEEE 802.3u 100BASE-TX IEEE 802.3x IEEE 802.3af/at/PoE++ hasivo HiPoE
standards of power supply	Accord with IEEE 802.3af/at/PoE++/HiPoE
Function Switch	N: Standard switching mode V: Port isolation mode S: Ultra remote power supply mode
Port Specification	10 / 100Base-T (x) automatic detection, full / half duplex MDI / mdi-x adaptive
Transmission Mode	Store and Forward(full wirespeed)
Bandwidth	16Gbps
Packet Forwarding	14.44Mpps
MAC Address	2K
Buffer	2.5M
Transmission Distance	10BASE-T : Cat3,4,5 UTP(≤250 meter) 100BASE-TX : Cat5 or later UTP(150 meter) 1000BASE-TX : Cat6 or later UTP(150 meter)
Power Pin	Default 1/2(+), 3/6(-); Optional 4/5(+), 7/8(-)
Single port power	Average 15.4W; MAX 30W(first port Max 60W)
Total Power/Input Voltage	65W (AC100-240V)
Watt	Standby power consumption: < 3W; Full load power consumption: < 65W
LED Indicator	Power: power indicator (power overload indicator) Uplink port: (network connection indicator green / 100M + Yellow / 1000m) Port: (POE work indicator orange; link_: network connection indicator green) S: (ultra far mode indicator) V: (port isolation indicator)
Power	Built-in power AC : 100~240V 50-60Hz 1A
Operating Temperature/ Humidity	-10~+55°C ; 5%~90% RH Non coagulation
Storage Temperature/ Humidity	-40~+75°C ; 5%~95% RH Non coagulation
Product size /Packing size ( L*W*H )	190mm*130mm*35mm 305mm*205mm*55mm
N.W/G.W ( kg )	0.6kg/0.9kg
Installation	Desktop(optional wall hanger parts)
Lightning protection level	KV 8/20us; IP30
Certificate	CE mark, commercial;CE/LVD EN60950; FCC Part 15 Class B; RoHS;
Warranty	Whole device for 1 year (Accessories not included)

## Attentions

To avoid equipment damage and personal injury caused by improper use, please follow the precautions as below:

!Keep the status of power-off during installation, and wear anti-static wrist to ensure good contact between anti-static wrist and skin to avoid the hidden danger.

!The switch can only work normally under the correct power supply. Please confirm that the power supply voltage is consistent with the voltage marked by the switch.

!Before switch on, please make sure that it will not cause overload of the power circuit, so as not to affect the normal operation of the switch or even unnecessary damage.

!In order to avoid the danger of electric shock, do not open the shell up when the switch works, even in the case of no live current, do not open.

!Before cleaning the switch, pull out the power plug. Do not wipe it by using wet fabrics or liquid.

!Install device in the rack-mount regularly from top to bottom, incase of over-load installation.

!Don't place other heavy objects on the surface of the switch to avoid accidents.

PS: We will try our best to check the errors in the printing and pictures, but hasivo will not be responsible for any possible omissions. The appearance, specifications, parameters, prices and supply conditions of the products listed on this page are subject to change without notice.