

➤ **Manual for S5800W-24G-4S+**
10 Gigabit Uplink Management Switch

01 Product introduction

Product overview

hasivo The self-developed S5800W-24G-4S+ 10 Gigabit uplink three-tier enterprise level multi-functional network management switch is specially optimized and enhanced for enterprise customers, with higher reliability. The equipment adopts Broadcom new generation high-performance platform and hasivo new self-developed switch system; Support flexible 802.1Q VLAN, IGMP, port monitoring, port aggregation, bandwidth control, ring network application and other network management functions, and easily adapt to the current complex network application environment. It is suitable for hotels, campuses, factory dormitories and enterprises to establish an economic and efficient network.

Port performance

- ◆ Supply 24*10/ 100/1000M RJ45 adaptive ports, all of which can realize line speed forwarding.
- ◆ Supply four 10 Gigabit SFP optical fiber uplink ports are provided for high-speed uplink transmission.
- ◆ It supports the combined use of multiple types of ports to facilitate the flexible networking of users and meet the networking requirements of various scenarios
- ◆ Each port supports MDI / mdix auto flip and duplex / rate self negotiation.
- ◆ Support IEEE 802.3x full duplex flow control and backpressure half duplex flow control.

Functional features

- ◆ Add a variety of new applications based on IPv6, easily adapt to modern complex network management applications
- ◆ Support IEEE 802.1Q VLAN, users can divide VLAN flexibly according to their needs.
- ◆ Support voice VLAN, configure QoS parameters for voice data stream, improve the transmission priority of voice data stream and ensure the call quality.
- ◆ It supports QoS, supports port based, 802.1p and DSCP based priority modes to optimize the bandwidth configuration.
- ◆ It supports ACL, achieves packet filtering by configuring matching rules, processing operations and time permissions, and provides flexible security access control policies
- ◆ Support IGMP V1 / V2 multicast protocol, support IGMP snooping, meet the requirements of multi terminal HD video monitoring and video conference access.
- ◆ Support multicast VLAN, multicast filtering, efficient data transmission, save network bandwidth, reduce network load.
- ◆ Support port monitoring, copy the data package of monitored port to the monitoring port to realize network monitoring.
- ◆ Support the management and maintenance of equipment through web interface.
- ◆ It supports port convergence, effectively increases link bandwidth, realizes link backup and improves link reliability.
- ◆ Support static routing.

Security & Protection

- ◆ STP / RSTP / MSTP spanning tree protocol is supported to eliminate layer-2 loops and realize link backup.
- ◆ Support tree security function, prevent devices in tree network from being attacked by various forms of malicious.
- ◆ It supports static aggregation and dynamic aggregation, effectively increases link bandwidth, realizes load balancing, link backup, and improves link reliability.

Running and Maintenance

- ◆ Support web management, CLI command line (console, telnet), SNMP (v1/v2/v3) and other diversified management and maintenance methods.
- ◆ It supports HTTPS, SSL V3, tlsv1, sshv1/v2 and other encryption methods, and makes management more secure.
- ◆ It supports RMON, system log and port traffic statistics to facilitate network optimization and transformation.
- ◆ Users can know the working status of the switch through the power indicator (PWR), port status indicator and system status indicator (sys).

02 Spare parts list



Switch



AC adapter



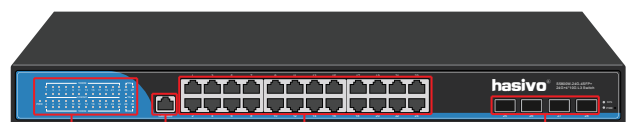
User manual+Warranty Card



Optional rack lug

03 Product display

Front



LED indicator
1*console port
24*10/100/1000M port
4*10000M SFP

Back



Grounding screw AC power interface

Indicator definition:

Indicator light	State	Description
Power indicator:PW	Green light is always on	Normal power on
	Constant extinction	Not powered on
Optical port connection indicator:25~28【10G】	Light on	The corresponding optical port works at the rate of 10 / 100 / 1000M
Optical port connection indicator:1~24【Giga】	Light on	The corresponding optical port operates at a rate of 10000M
System indicator: SYS	1S Slow flash	The system operates normally

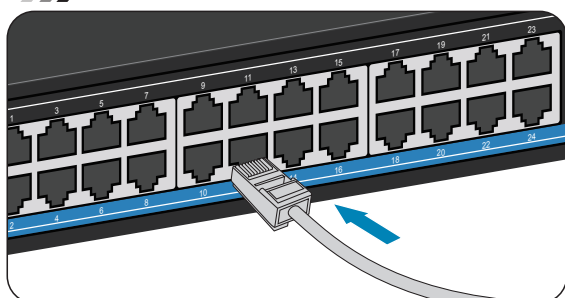
04 Installation&Points of attention

Checking before installation

- 1.Check whether the accessories are complete. If there is any omission, please contact us.
- 2.Check whether the power supply voltage is consistent with the working voltage of the switch,so as to avoid the equipment burning out due to high voltage.
- 3.Ensure that the installation position of the switch has certain ventilation and heat dissipation conditions.
- 4.Please keep the power off during installation to avoid potential safety hazards.
- 5.Please install the switch on a stable plane to avoid falling and damage.

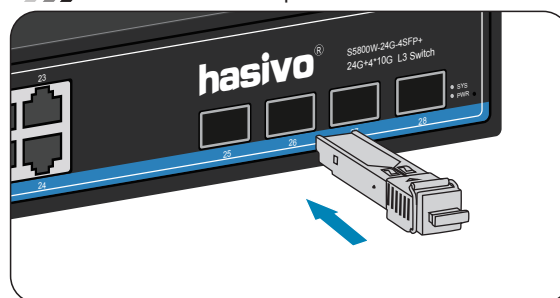
Port installation and connection

Insert data line



As shown in the figure, insert the crystal head of the data line into the network port. When you hear a crisp click, it indicates that the crystal head is successfully connected with the network port of the switch. Just plug in all the network cables of the network equipment in this way. (Note: the downlink port needs to be connected with network equipment; the uplink port needs to be connected with optical fiber convergence switch, server and other equipment.)

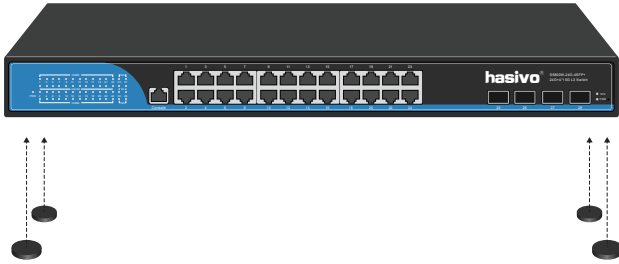
Install the fiber optic module



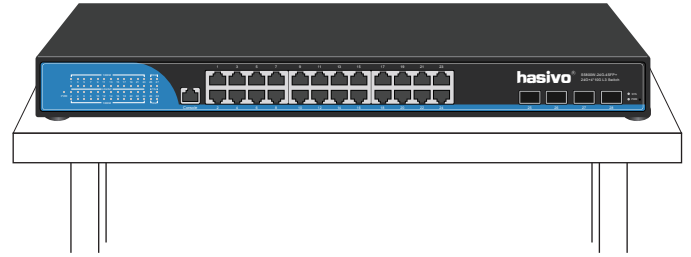
As shown in the figure, align the optical fiber module with the SFP optical port and insert it smoothly and forcefully. When you hear a crisp click, it indicates that the optical fiber module is installed successfully. Install the two optical fiber modules in this way. (Note: the single fiber optical module needs 1310nm at the A end and 1550nm at the B end to be used in pairs. Please purchase and check before installation)

Install to desktop

- Stick the anti-skid rubber foot pad on the four corners of the bottom of the switch

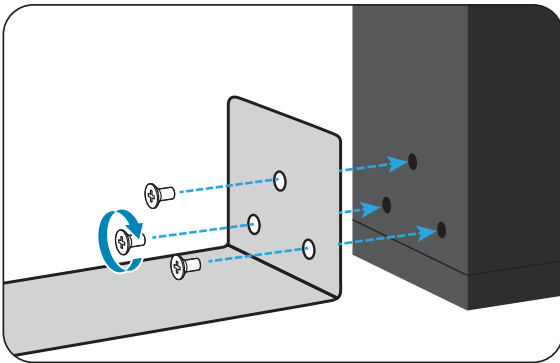


- Place the switch on a well ventilated desktop

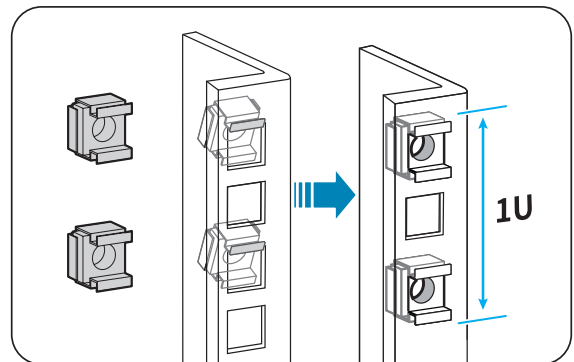


Mounting to cabinet / rack

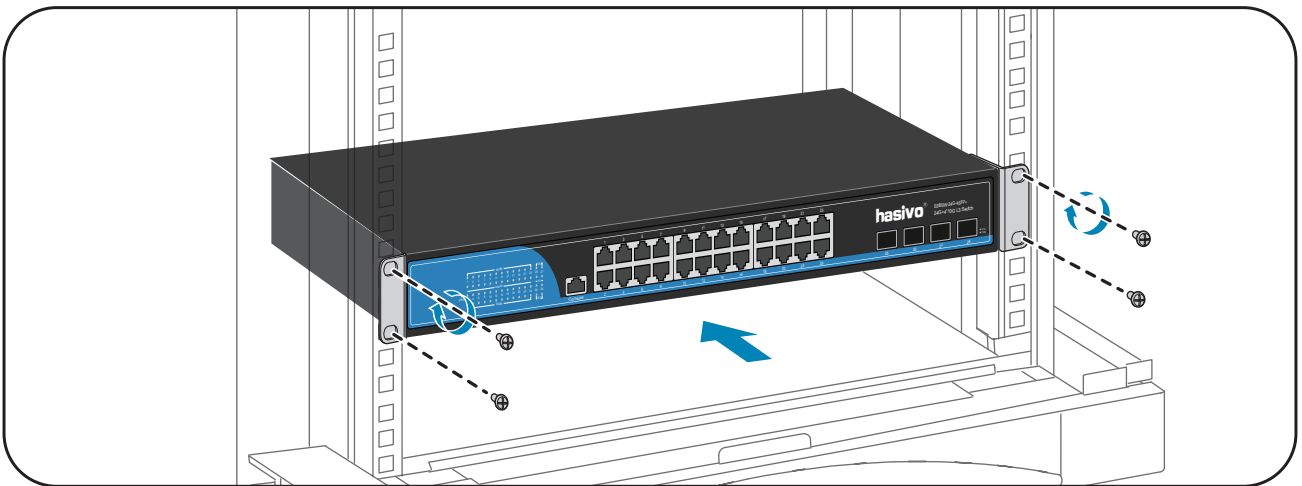
1. Install the rack lugs attached to the equipment on both sides of the switch with screws



2. Install the floating nut on the cabinet / rack

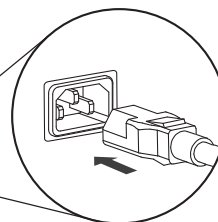
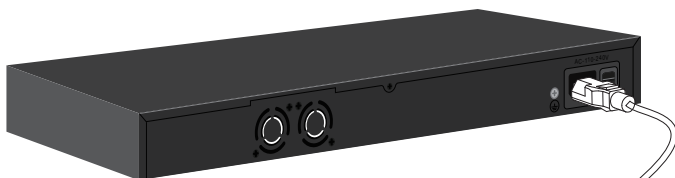


3. Put the switch with the lug installed into the cabinet and screw in the screw to complete the installation.

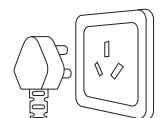


Turn on electricity

- Plug in the power connector and turn on the power



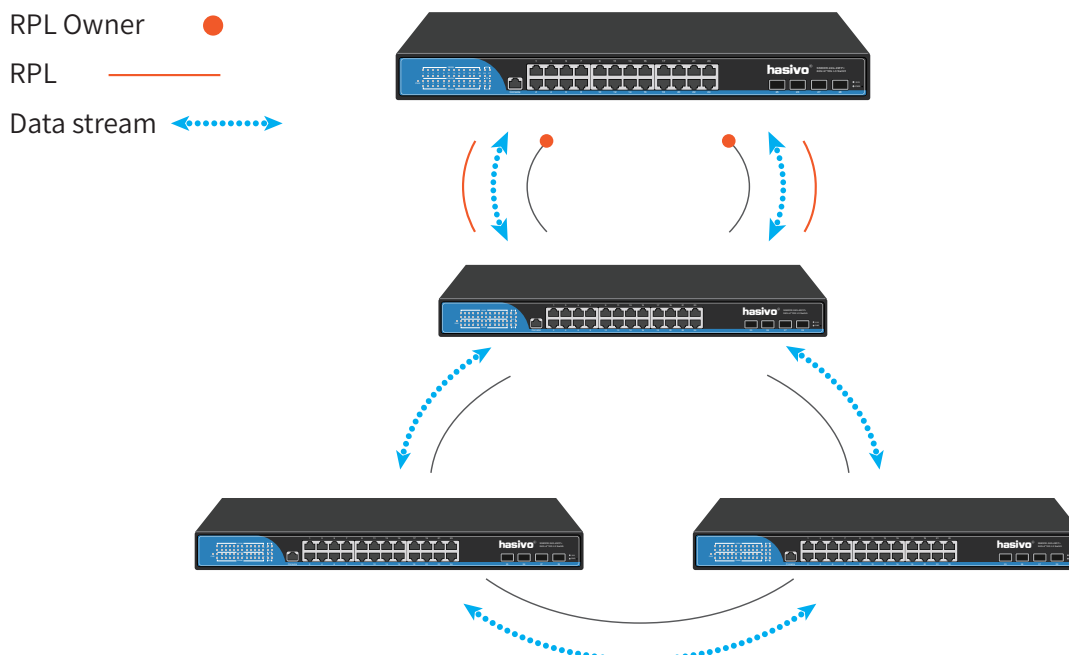
Connect the AC power cord plug
100V ~ 240V 50 / 60Hz mains power is enough



Three hole socket

1. Do not stack heavy objects on the switch to avoid danger.
2. In order to avoid the risk of electric shock, please do not open the machine box when the switch is working, even if it is not powered on, please contact us in case of any problem.
3. Before cleaning the switch, pull out the power plug of the switch. Do not wipe it with wet fabric or clean it with liquid.
4. If the power adapter is damaged, do not replace it with other power adapters. This switch should be equipped with original power adapter.

»» VLAN application



06 Common troubleshooting

- ⚠ *The PWR indicator is not on after the power is connected → Check whether the power adapter and plug are connected correctly, whether the power cord is damaged, and whether the power adapter is damaged.*
- ⚠ *Switch cannot communicate after power up → Check whether the switch indicator is on. If the indicator is off, the network cable is not connected. If the indicator is on, the communication fault is indicated.*
- ⚠ *Switch network speed suddenly become very slow → Take off the plug and restart the switch.*

[If the above problems or other switch problems can not be solved, please contact us for technical support]

07 Technical parameter

Product model	S5800W-24G-4S+
Product name	10G Uplink 4SFP+24GE L3 Managed Switch
Fixed port	24*10/100/1000Base-TX uplink RJ45 port (Data) 4*100/1000/10000M SFP
Management port	1
Reset key	1
Network protocol	IEEE 802.3 IEEE 802.3u 100BASE-TX IEEE 802.3ab1000BASE-T IEEE 802.3x IEEE 802.3z 1000BASE-X IEEE 802.3ad IEEE 802.3q、IEEE 802.3q/p IEEE 802.1w、IEEE 802.1d、IEEE 802.1S STP(Spanning Tree Protocol) RSTP/MSTP(Rapid Spanning Tree Protocol) EPPS ring network protocol EAPS ring network protocol
Bandwidth	256Gbps
Packet Forwarding	95.23Mpps
MAC Address	16K
Buffer	4.1M
Transmission Distance	10BASE-T : Cat3,4,5 UTP(≤250 meter) 100BASE-TX : Cat5 or later UTP(150 meter) 1000BASE-TX : Cat6 or later UTP(150 meter) SFP: 100M/1G/10G single-mode multi-mode optical module, the maximum distance is ≤120km (depending on the optical module)
FLASH	512MBytes
RAM	512MBytes
CPU	Cortex-A9 1GHz
DDR	4G DDR3
VLAN地址	4K
链路聚合	Supports 128 trunk groups with up to 8 members per group
L3路由	IPV4 supports 1024; IPV6 supports 512
QoS队列	8
LED Indicator	PWR:Power indicator SYS:(System indicator) 1~24 (10 / 100M network connection indicator, 1000m network connection indicator) 25~28:(Optical port connection indicator)
Power	Built in switching power supplyAC 100~240V 50/60HZ

Operating Temperature/Humidity	-10~+55°C;5%~90% RH No condensation
Storage Temperature/Humidity	-40~+75°C;5%~95% RH No condensation
Product size/ package size (L*W*H)	440mm*200mm*45mm 515mm*300mm*95mm
N.W/G.W (kg)	2.2kg/2.9kg
Installation	Rack type (distribution rack lug)
Lightning protection / protection level	6KV 8/20us; IP30
Certificate	3C;CE-EMC EN55032;CE-LVD EN62368; FCC Part 15 Class B;RoHS
Warranty	Whole device for 1 year(Accessories not included)

PS: We will try our best to check the errors in the printing and pictures, but hasivo will not be responsible for any possible omissions. The appearance, specifications, parameters, prices and supply conditions of the products listed on this page are subject to change without notice.



Sichuan hasivo electronics CO.,LTD.

Address: NO.5-2 Anping street, New District, Economic Development Zone, Meishan City,Sichuan Province,China.
Post code: 620010

Offical website: <http://www.hasivo.com>

©2013-2022 Sichuan hasivo electronics CO.,LTD. All rights reserved

After-sale service: 028-38288776
Technical service: 028-38119776