

Industrial

4+2 Managed PoE Switch

➤ User Manual

Industrial 4GE PoE+2SFP

Overview

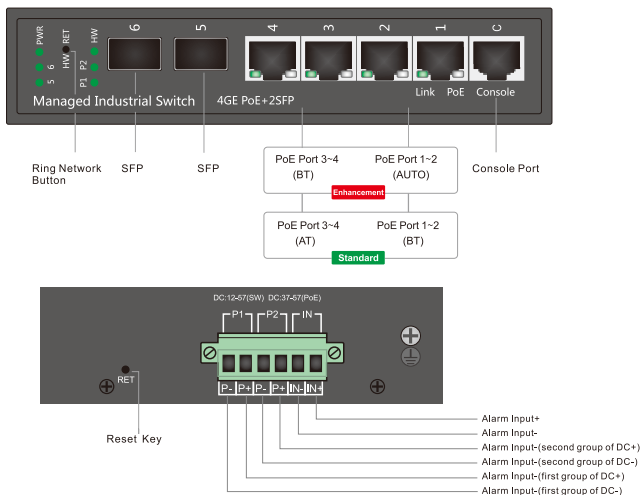
Industrial managed PoE switch series feature the performance on an industrial level, which can withstand severe working environment. With rich series and flexible port configuration, the switches are suitable for using requirements in various industrial field. Owning a unique and special industry management interface, the switches provide a comprehensive security system, perfect ring network application, QOS strategy and rich VLAN function. It is convenient to manage and maintain which is satisfied in complex environment with high density such as in factories, mines, industry automation, transportation, infrastructure, port and farmlands. High-power PoE power supply and intelligent management function are applied in various network.

Features

- ◆ Unique industrial management interface, achieving high-efficiency network management.
- ◆ Lightning protection: up to 6KV.
- ◆ ESD static protection: up to 8KV.
- ◆ Support industrial operation temperature: -40°C~80°C;
- ◆ Industrial operation humidity: 10%~90% RH non coagulation.
- ◆ 24V/48V auto power supply matching(only for enhanced PoE model).
- ◆ BT power supply up to 90W(only for PoE model).
- ◆ Wide voltage input: 12-57V(SW)/ 37-57V(PoE).
- ◆ Power-receiving standard: 12-57V(SW)/ 37-57V(PoE).
- ◆ Unique ring network formation with one button to achieve quick application.
- ◆ Unique advanced PoEdog function(only for PoE model).

Display & Description

Industrial 4GE PoE+2SFP, 4*10/100/1000M PoE port+2*1000M SFP



Function Indicator(Front)	Mode	Description	Function Indicator(Front)	Mode	Description
HW: Ring network LED	ON	Ring network formed	5~6:SFP LED	ON	SFP connected
	OFF	Ring network not formed		OFF	SFP not connected or abnormal
P2: Second group of DC input LED	ON	Ring network not formed	P1: First group of DC input LED	ON	Power is normal and in power supply
	OFF	Ring network not formed		OFF	No power input
	1/4s flash	Power is normal and in power supply		1/4s flash	Power and voltage abnormal
	1s flash	No power input		1s flash	Power and voltage normal(in reserve)

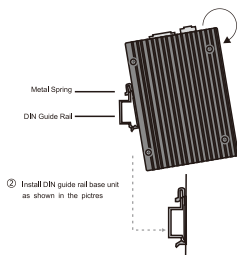
Indicator

Indicator(Front)			Status	Description
PWR.Power LED			ON	Power on
			OFF	Power off
			1S flash	System in normal operation
PoE Port Indicator (Port 1~2)	PoE	Orange	ON	24V communication device connected
			OFF	24V communication device not connected
		Green	ON	48V communication device connected
			OFF	48V communication device not connected
	Link-Green		ON	Network signal communicated
			OFF	Network signal not communicated
PoE Port Indicator (Port 3~4)	PoE-Orange		ON	Powered device connected and power supply normal
			OFF	No powered device connected or no power supply
	Link-Green		ON	Network signal communicated
			OFF	Network signal not communicated
PoE Port Indicator (Port 1~4)	PoE-Orange		ON	Powered device connected and power supply normal
			OFF	No powered device connected or no power supply
	Link-Green		ON	Network signal communicated
			OFF	Network signal not communicated

Installation

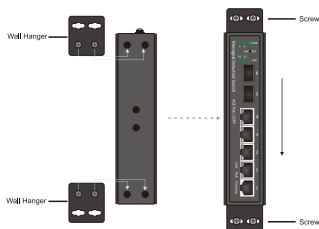
DIN Guide Rail

- ① Insert the top of DIN guide rail into the groove at the bottom of rigid metallic spring.



Wall-mounting

- ① Install the wall hangers onto the switch. ② Secure the switch length onto the wall by using screws.



Attentions

1. Please read the user manual detailed before using the switch, or improper operation can cause damage to machine components.
2. Do not use it in the place near fire source.
3. Do not throw it into the water neither do not wet the inner machine components.
4. Do not short circuit the positive and negative poles of the battery with metal conductor.
5. Do not dismantle or disassemble inner components, or factory will not underwrite the warranty stipulation.

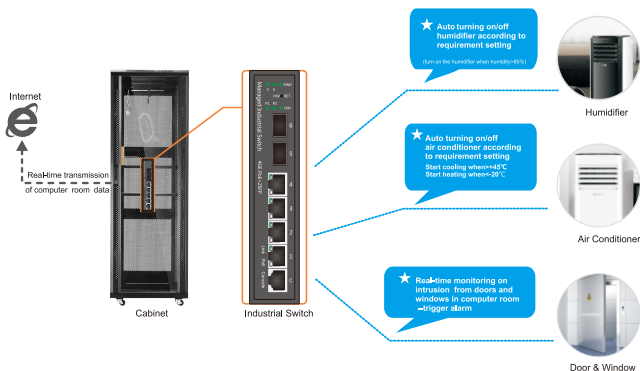
Product List

<p>► 1*Switch</p>	<p>► 1*User Manual+Warranty Card</p>	<p>► Wall hangers +guide rail</p>
-------------------	--------------------------------------	-----------------------------------

Application

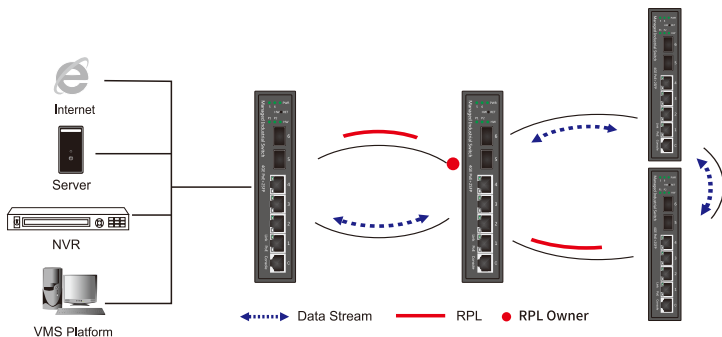
1.Application in Intelligent Computer Room

Not only as a switch, but also a good assistance for computer room management.



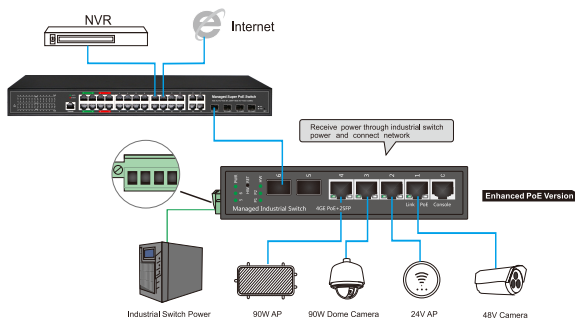
2.Ring Network Application on Video Surveillance System

Unique ring network formation with one button, achieving reliable network formation.



3.Power Supply Application of Compatible 24V/48V PoE and High Power

90W power supply maximum supported.



Hardware Parameter

Model	Industrial 4GE PoE+2SFP
Product	Industrial 4+2 Managed Switch
Console Port	1
Reset Key	1
Downlink Port	4*10/100/1000M Port 1~2 support 24V/48V PoE(Single port power MAX30W, only for enhancement model) Port 3~4 support BT PoE (Single port power MAX90W)
Uplink Port	2*10/100/1000M SFP
Function Interface (only for enhancement model)	1: 1 switch for quick formation of ring network. 2: 2 group of independent power input, having under- and over-voltage protection. 3: 1 group of wide voltage alarm input at a range of DC5-57V. 4: 1 group of alarm output and relay output, can define various custom condition trigger. 5: 1 group of environmental temperature and humidity detection, can make real-time monitoring of the environment. 6: Real-time system of crucial voltage monitoring and alarm output function 7: Real-time system temperature, environment temperature, humidity and alarm output function. 8: Real-time detection and display of input voltage, current, power. 9: Multiple custom port control and intelligent management.
Network protocol	IEEE 802.3x IEEE 802.3, IEEE 802.3u, IEEE 802.3ab, IEEE 802.3z IEEE 802.3ad IEEE 802.3q, IEEE 802.3q/p IEEE 802.1w, IEEE 802.1d, IEEE 802.1S IEEE 802.3z 1000BASE-X STP(Spanning Tree Protocol) RSTP/MSTP(Rapid Spanning Tree Protocol) EPPS ring network protocol EAPS ring network protocol hasivo 802.3AF/AT/HiPoE/BT hasivo AUTO 24V/48V PSE
Environment Detection (only for PoE model)	1 group of input detection of environment temperature and humidity
Port Specification	1-4 port 10/100/1000BaseT(X)auto detection, AUTO-MDI/MDI-X
Transmission Mode	Store and Forward(full wirespeed)
Bandwidth	56Gbps
Packet Forwarding	14.44Mpps
MAC	8K
Buffer	4.1M
Transmission Distance	10BASE-T : Cat3 4.5 UTP(≤250 meter) 100BASE-TX : Cat5 or later UTP(≤100 meter) 1000BASE-TX : Cat6 or later UTP(≤1000 meter) 1000BASE-SX: 62.5μm/50μm MMF(2m~550m) 1000BASE-LX: 62.5μm/50μm MM(2m~550m) or 10μm SMF(2m~5000m) BIDI supported
FLASH	16M
RAM	128M
Watt	Standby power consumption ≤5W Network full load power consumption ≤10W Whole device full-load power consumption ≤250W
LED Indicator	5-6:(SFP LED) PoE Port 1-2:(Green=48V; Orange=24V) ; Link port:(Green=Link LED) Port 3-4:(Green=Link LED; Orange=PoE LED) PWR:(Power/system LED) P1: (Master power LED) P2: (Slave power LED) HW:(Ring network ON LED)
Power Input	2 group of independent power input SW: DC 12-57V ; PoE: DC 37-57V
Operating Temperature /Humidity	-40~+80°C; 5%~90% RH No coagulation
Storage Temperature /Humidity	-40~+85°C; 5%~95% RH No coagulation
Lightning Protection Level	6KV 8/20us, 8KV ESD; IP40
Product Size(L*W*H)	157mm*115mm*40mm 235mm*165mm*78mm
N,W(kg)	0.82kg/1.0kg
Installation	DIN guide rail(additional wall hangers accessoried)
Certificate	3C; CE mark, commercial; CE/LVD En60950; FCC Part 15 Class B; RoHS;
Warranty	Whole device for 1 year(Accessories not included)

Software Parameter

Model	Industrial 4GE PoE+2SFP
Monitoring Platform	Quick formation of ring network with one button System temperature monitoring and alarm External temperature and humidity monitoring and alarm Input power monitoring and alarm System each channel key voltage monitoring and alarm System total current, total power monitoring and alarm All-Port network monitoring and alarm Support one group input and output signal monitoring and alarm
Network Protocol	IEEE 802.3x IEEE 802.3, IEEE 802.3u, IEEE 802.3ab, IEEE 802.3z IEEE 802.3ad IEEE 802.3q, IEEE 802.3q/p IEEE 802.1w, IEEE 802.1d, IEEE 802.1s, IEEE 802.1x
MAC	Support 16K MAC address, auto aging and learning
VLAN Configuration	Support port-based VLAN Up to 4096 VLANs Support Voice VLAN, can configure QoS for voice data 802.1Q VLAN
Spanning Tree	STP(Spanning tree protocol); RSTP/MSTP(Rapid spanning tree protocol) EPPS/EAPS(Ring network protocol); 802.1x
Port Aggregation	Support 8 groups of aggregation, each group support up to 8 ports;
Port Mirroring	Support many-to-one port mirroring
Loop Guard	Support loop protection, real-time detection, quick alarm, concise location, Intelligent blocking, automatic recovery
Port Isolation	Support downlink ports isolate from each other and communicate with uplink port as well
Flow Control	Half duplex based on Back pressure; Full duplex based on PAUSE frame
Speed Limitation	Bandwidth management based on port input and output
Multicast Control	IGMPv1/2/3 and MLDv1/2 Snooping GMRP protocol registration Multicast address management, multicast VLAN, multicast routing port, static multicast address
DHCP	DHCP Snooping
Storm Suppression	Support unknown unicast, multicast, unknown multicast, broadcast type storm suppression Storm suppression based on bandwidth adjustment and storm filtering
Security	Support User port+IP address+MAC address; ACL based on IP, MAC; Support security properties of number of MAC address based on port
QOS	802.1p port queue priority algorithm; Cos/Tos, QoS remark WRR(Weighted Round Robin), weighted priority rotation algorithm; WRR, SP, WFQ priority scheduling modes
Cable Sequence	Auto-MDX; auto detection on straight-through and cross-over cable
System maintenance	Upgrade package upload ; System log viewing ; WEB recovery factory configuration
PoE Function (only for PoE models)	Port switch Schedule arrangement, timing switch Voltage, current, power display System total power display and configuration PoE dog: support auto reset, timing reset and ip binding reset when device failed Port power configuration(AFCAT HiPoE, BT) Indication of over power Port PoE type configuration(48V/24V power supplying)
Network Management	WEB interface management; CLI management based on Telnet, TFTP, Console; SNMP V1/V2/V3 management RMON V1/V2 management; RMON management

The followings are main functions not included in all the functions. Please contact with us for more other information!
We support software development for customization requirement.