

8+10 Managed Switch

➤ User Manual

G1200W-8G-10S



hasivo sichuan

Overview

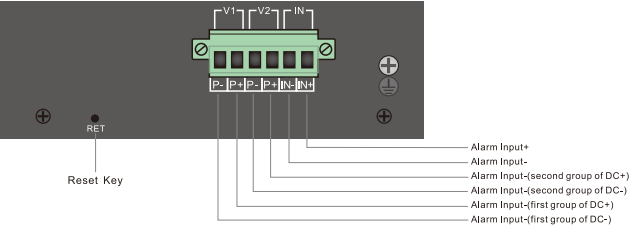
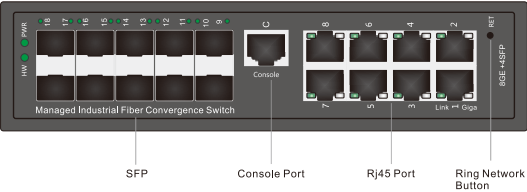
"hasivo" industrial managed PoE switch series feature the performance on an industrial level, which can withstand severe working environment. With rich series and flexible port configuration, the switches are suitable for using requirements in various industrial field. Owing an unique and special industry management interface, the switches provide a comprehensive security system, perfect ring network application, QOS strategy and rich VLAN function. It is convenient to manage and maintain which is satisfied in complex environment with high density such as in factories, mines, industry automation, transportation, infrastructure, port and farmlands. High-power PoE power supply and intelligent management function are applied in various network.

Features

- ◆ Unique industrial management interface, achieving high-efficiency network management.
- ◆ Lightning protection: up tp 6KV.
- ◆ ESD static protection: up to 8KV.
- ◆ Support industrial operation temperature: -40°C~80°C;
- ◆ Industrial operation humidity: 10%~90% RH non coagulation.
- ◆ Wide voltage input: 12-57V(SW)/ 37-57V(PoE).
- ◆ Power-receiving standard: 12-57V(SW)/ 37-57V(PoE).
- ◆ Unique ring network formation with one button to achieve quick application.

Display & Description

G1200W-8G-10S, 8*10/100/1000M RJ45+10*1000M SFP



Indicator

Indicator		Status	Description
Power LED:PWR		on	Normal
		off	Power Unconnected
		flash	Port circuit or currnent over-loaded
Network LED	Orange	on	Giga on
		off	Giga off
	Green	on	Link on
		off	Link off
SFP LED:9-18		on	SFP on
		off	SFP off

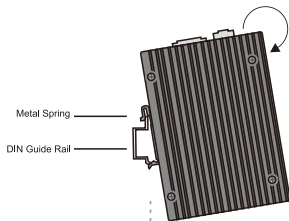
Product List



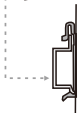
Installation

DIN Guide Rail

- ① Insert the top of DIN guide rail into the groove at the bottom of rigid metallic spring.

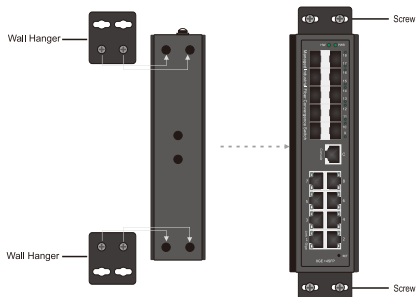


- ② Install DIN guide rail base unit as shown in the pictures



Wall-mounting

- ① Install the wall hangers onto the switch. ② Secure the switch length onto the wall by using screws.



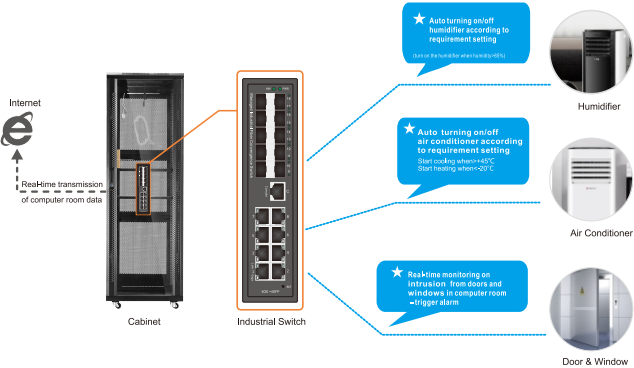
Attentions

1. Please read the user manual detailed before using the switch, or improper operation can cause damage to machine components.
2. Do not use it in the place near fire source.
3. Do not throw it into the water neither do not wet the inner machine components.
4. Do not short circuit the positive and negative poles of the battery with metal conductor.
5. Do not dismantle or disassemble inner components, or factory will not underwrite the warranty stipulation.

Application

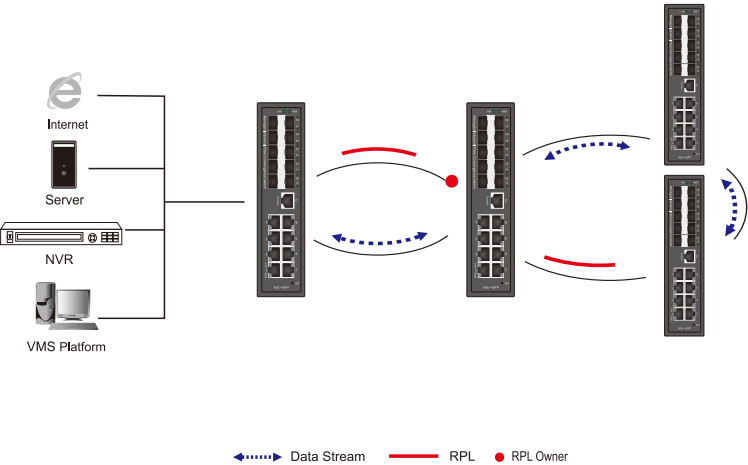
1.Application in Intelligent Computer Room

Not only as a switch, but also a good assistance for computer room management.



2.Ring Network Application on Video Surveillance System

Unique ring network formation with one button, achieving reliable network formation.



Hardware Parameter

Model	G1200W-8G-10S
Port	8*10/100/1000M RJ45 10*1000M SFP
Console Port	1*console
Reset Key	1
FLASH	16M
RAM	128M
Bandwidth	56Gbps
Packet Forwarding	14.44Mpps
MAC	8K
Buffer	4.1M
Transmission Distance	10BASE-T : Cat3,4,5 UTP(=250 meter) 100BASE-TX : Cat5 or later UTP(150 meter) 1000BASE-TX : Cat6 or later UTP(150 meter) SFP: 1000M single and multimode optical module with maximum distance =120km (depending on the optical module)
LED Indicator	9-18:(SFP LED) Port1-8:(Green=100M; Green+Orange=1000M) PWR:(Power/system LED) HW:(Ring network ON LED)
Watt	Standby power consumption ≤15W; Network Full-load power consumption ≤25W;
Power Input	2 group of independent power input SW:DC12-57V
Lightning Protection Level	6KV 8/20us; 8KV ESD; IP40
Storage Temperature/ Humidity	-40~+80°C;10%~90% RH No coagulation
Operating Temperature/ Humidity	-40~+85°C;5%~95% RHR No coagulation
Product size/Packing size(L*W*H)	208mm*130mm*50mm 280mm*165mm*79mm
N.W/G.W(kg)	1.3kg/1.5kg
Installation	DIN guide rail type(additional wall hangers)
Certificate	3C; CE-EMC EN55032; CE-LVD EN62368; FCC Part 15 Class B; RoHS
Warranty	Whole device for 1 year(Accessories not included)

PS: We will try our best to check the errors in the printing and pictures, but hasivo will not be responsible for any possible omissions. The appearance, specifications, parameters, prices and supply conditions of the products listed on this page are subject to change without notice.

Software Parameter

Model	G1200W-8G-10S
Monitoring Platform	Quick formation of ring network with one button System temperature monitoring and alarm External temperature and humidity monitoring and alarm Input power monitoring and alarm System each channel key voltage monitoring and alarm System total current, total power monitoring and alarm All-Port network monitoring and alarm Support one group input and output signal monitoring and alarm
Network Protocol	IEEE 802.3x IEEE 802.3, IEEE 802.3u, IEEE 802.3ab, IEEE 802.3z IEEE 802.3ad IEEE 802.3q, IEEE 802.3q/p IEEE 802.1w, IEEE 802.1d, IEEE 802.1s, IEEE 802.1x
MAC	Support 16K MAC address, auto aging and learning
VLAN Configuration	Support port-based VLAN Up to 4096 VLANs Support Voice VLAN, can configure Qos for voice data 802.1Q VLAN
Spanning Tree	STP(Spanning tree protocol); RSTP/MSTP(Rapid spanning tree protocol) EPPS/EAPS(Ring network protocol); 802.1x
Port Aggregation	Support 8 groups of aggregation, each group support up to 8 ports;
Port Mirroring	Support many-to-one port mirroring
Loop Guard	Support loop protection, real-time detection, quick alarm, concise location, Intelligent blocking, automatic recovery
Port Isolation	Support downlink ports isolate from each other and communicate with uplink port as well
Flow Control	Half duplex based on Back pressure; Full duplex based on PAUSE frame
Speed Limitation	Bandwidth management based on port input and output
Multicast Control	IGMPv1/2/3 and MLDv1/2 Snooping GMRP protocol registration Multicast address management, multicast VLAN, multicast routing port, static multicast address
DHCP	DHCP Snooping
Storm Suppression	Support unknown unicast, multicast, unknown multicast, broadcast type storm suppression Storm suppression based on bandwidth adjustment and storm filtering
Security	Support User port+IP address+MAC address; ACL based on IP, MAC; Support security properties of number of MAC address based on port
QOS	802.1p port queue priority algorithm; Cos/Tos, QOS remark WRR(Weighted Round Robin), weighted priority rotation algorithm; WRR?SP?WFQ priority scheduling modes
Cable Sequence	Auto-MDIX; auto detection on straight-through and cross-over cable
System maintenance	Upgrade package upload; System log viewing; WEB recovery factory configuration
PoE Function (only for PoE models)	Port switch Schedule arrangement, timing switch Voltage, current, power display System total power display and configuration PoE dog: support auto reset, timing reset and ip binding reset when device failed Port power configuration(AF, AT HiPoE, BT) Indication of over power Port PoE type configuration(48V/24V power supplying)
Network Management	WEB interface management; CLI management based on Telnet, TFTP, Console; SNMP V1/V2/V3 management RMON V1/V2 management; RMON management

The followings are main functions not included in all the functions. Please contact with us for more other information!
We support software development for customization requirement.

Sichuan Hasivo Video Electronics Co. Ltd.

Address: No. 9 Anping Street, Economic Development Zone, Dongpo District, Meishan City, Sichuan Province, China

Zip Code: 620010 [Http://www.hasivo.com](http://www.hasivo.com)

Sales Service : 028-38288776

©2013-2022 Sichuan hasivo Video Electronics Co., Ltd. all rights reserved title

Technical Service : 028-38180800