

产品介绍 product description



YD-PO4512(1.0×1.0×1.2)

YD-PO4515(1.2×1.2×1.5)

产品介绍 product description

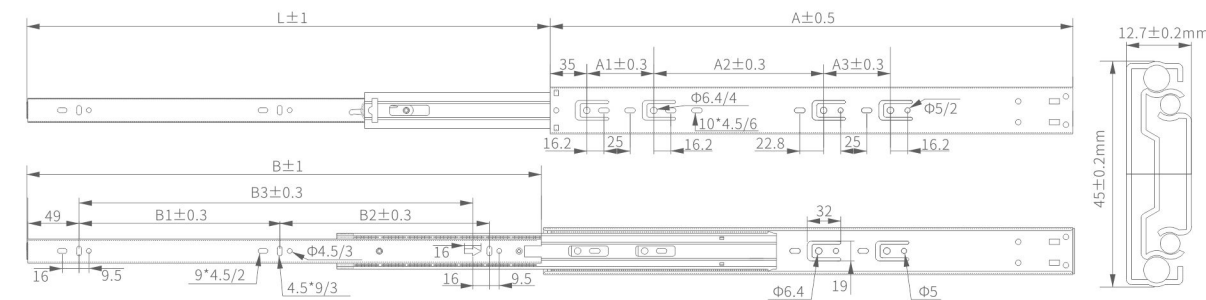


YD-HD4510(1.0X1.0X1.0)

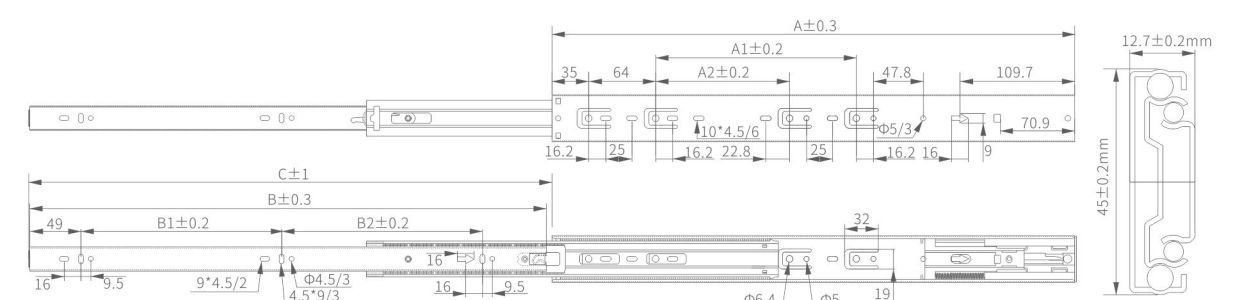
YD-HD4512(1.0X1.0X1.2)

YD-HD4515(1.2X1.2X1.5)

滑轨安装说明 Guide rail installation instructions



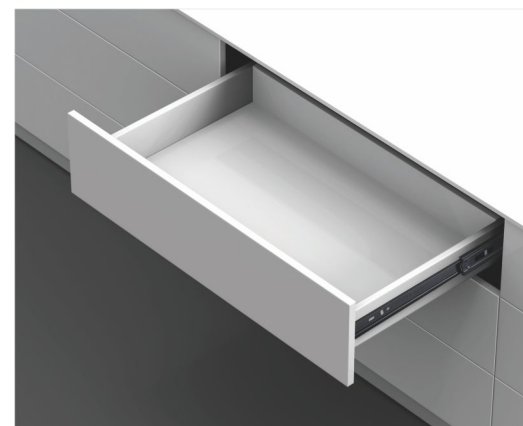
滑轨安装说明 Guide rail installation instructions



规格	10''(250)	12''(300)	14''(350)	16''(400)	18''(450)	20''(500)	22''(550)	24''(600)
A	250	300	350	400	450	500	550	600
A1		64	64	64	64	64	64	64
A2			80	128	160	160	192	256
A3						64	64	64
B	232	282	332	382	432	482	532	582
B1		80	96	128	160	192	192	224
B2		112	128	144	160	192	224	256
B3	144							
L	220	285	335	385	435	485	535	585

规格	10''(250)	12''(300)	14''(350)	16''(400)	18''(450)	20''(500)	22''(550)	24''(600)
A	250	300	350	400	450	500	550	600
A1						128	192	224
A2			96	112	160	192	256	288
B	244	294	344	394	444	494	544	594
B1	80	96	128	160	160	192	224	256
B2	80		128	144	176	192	224	224
C	225	300	350	400	450	500	550	600

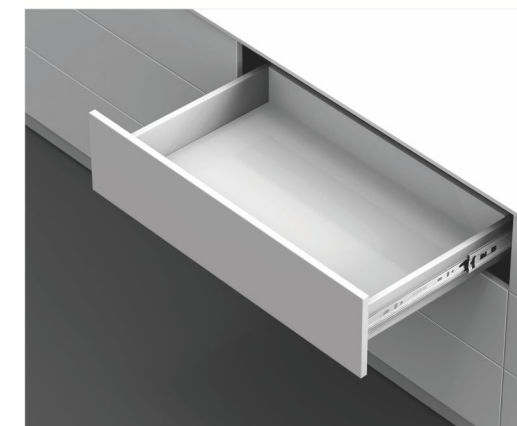
YD-PO45mm (反弹款) 三折反弹滑轨 3-Fold Rebound Ball Bearing Slide



建议用途:中承载柜子,活动柜,一般家具,柜台抽屉,或任何需要45公斤以下荷重,要求全展的用途。
产品特点:内建间隙可调整片,快速分离机构,避震珠条吸收冲撞,防止抽屉弹出机构。
表面处理:镀蓝锌、彩锌、黑锌
材质:冷轧带钢

Use: Mid-duty movable cabinet, desk drawer, ordinary furniture, or any applications requiring 45kgs or less and requiring full extension.
Products features: Fine adjust of gap is possible in it, quick separation mechanism, absorber ball strip for absorbing impulsive force, and mechanism to drawer from springing out.
Finished: Blue zinc-plated, color zinc-plated, black electrophoresis
Material: Cool-roll with the stainless

YD-HD45mm (缓冲款) 三节缓冲滑轨 3-Fold Hydraulic Ball Bearing Slide



建议用途:中承载柜子,活动柜,一般家具,柜台抽屉,或任何需要45公斤以下荷重。
产品特点:内建间隙可调整片,快速分离机构,阻尼系统可使抽屉轻柔减速,关闭时无噪音避震珠条吸收冲撞,防止抽屉弹出机构。
表面处理:镀蓝锌、彩锌、黑锌
材质:冷轧带钢

Use: Mid-duty movable cabinet, desk drawer, ordinary furniture, or any applications requiring 45kgs or less and requiring full extension.
Products features: Fine adjust of gap is possible in it, quick separation mechanism, damper equipment be of retraction buffering function, provide noiseless closing, absorber ball strip for absorbing impulsive force, and mechanism to prevent drawer from springing out.
Finished: Blue zinc-plated, color zinc-plated, black electrophoresis
Material: Cool-roll with the stainless.