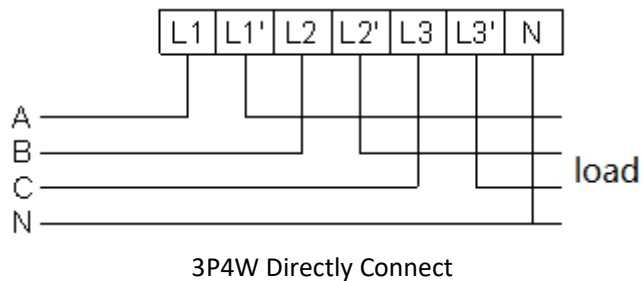
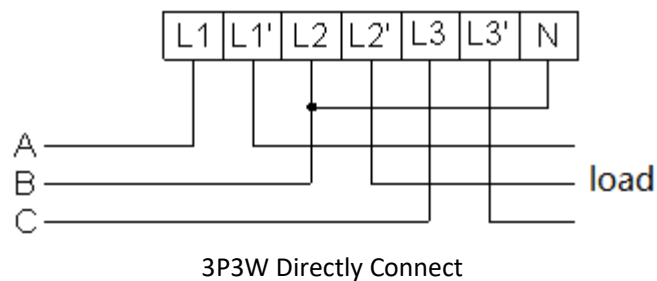
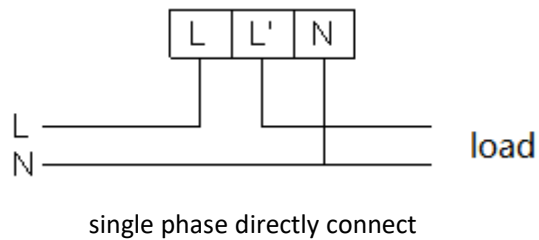
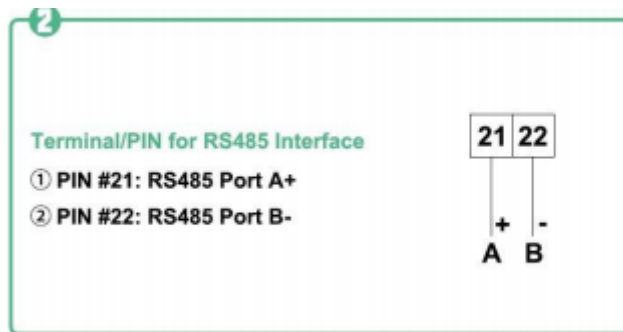
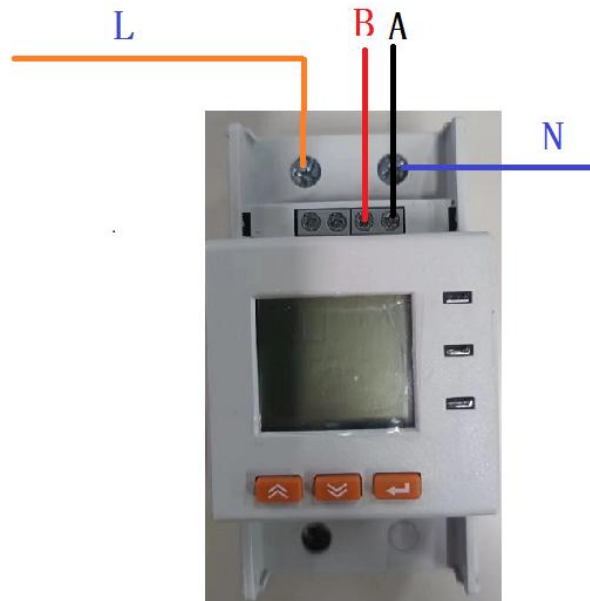


一. 电表接线 Wiring

1、根据接线图给电表上电 Wiring According to the below diagram

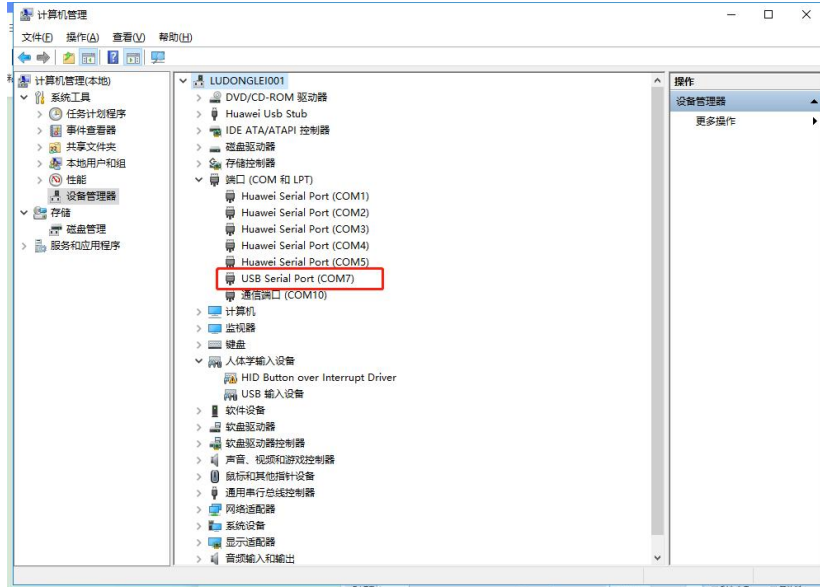


2、将电表和电脑通过 USB 转 485 串口线连接好，电表的 21 接 T/R+(A),22 接 T/R-(B)



二. 串口通讯设置 Port Communication Setting

- (1) 右键“我的电脑”，管理>>设备管理器>>端口，查看串口号
(1) Right-click "My Computer", Manage>>Device Manager>>Port, and check the serial port number



(2) 打开预付费电表调试软件，设置串口对应参数 Open configuration Software to set port corresponding parameters

在调试软件左上角点击设置选择对应的串口号

Click "Set" in the upper left corner of the Configuration software to select the corresponding serial port number

其他参数默认波特率：9600

Other parameters default baud rate:9600

数据位：8

Data bits: 8

停止位：1

stop bits: 1

奇偶校验：无 (N)

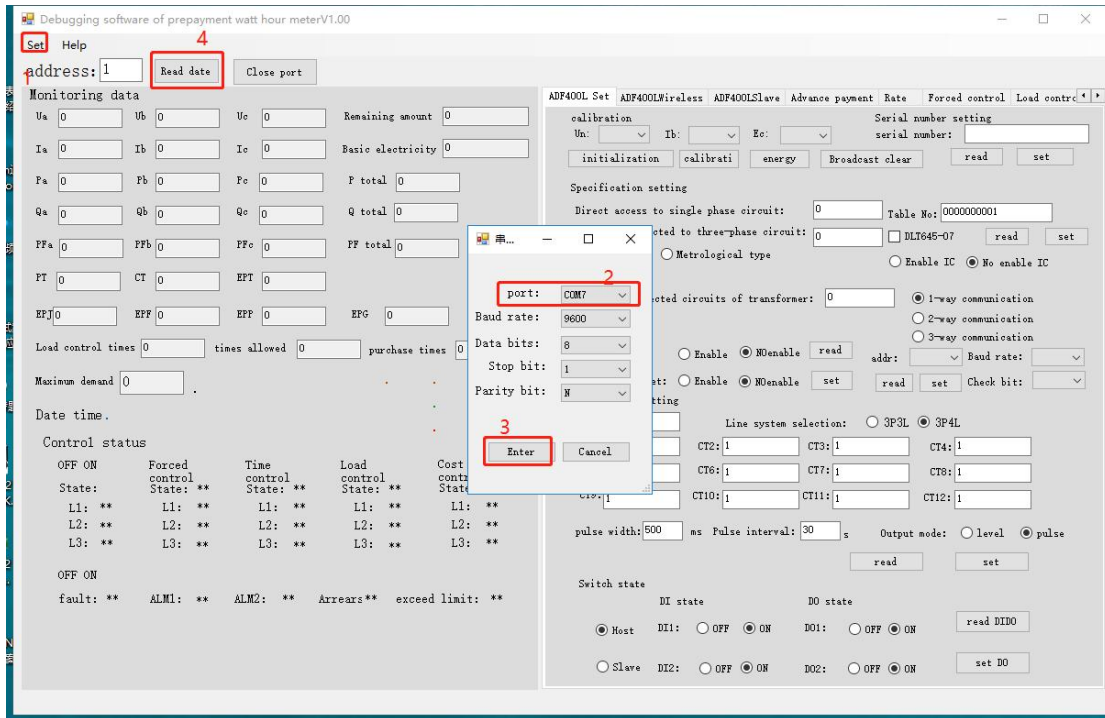
Parity: None (N)

填写表地址——4G 表默认为 1

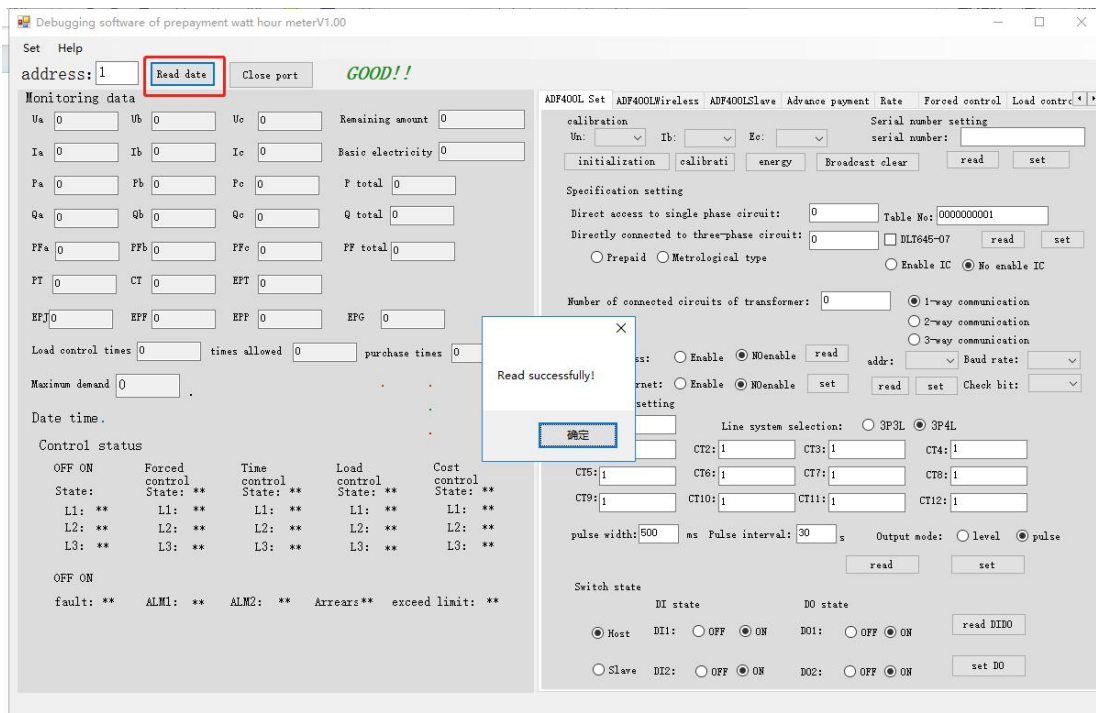
Fill in the Energy Meter address - the 4G energy meter defaults to 1

点击确定

Click **Enter**



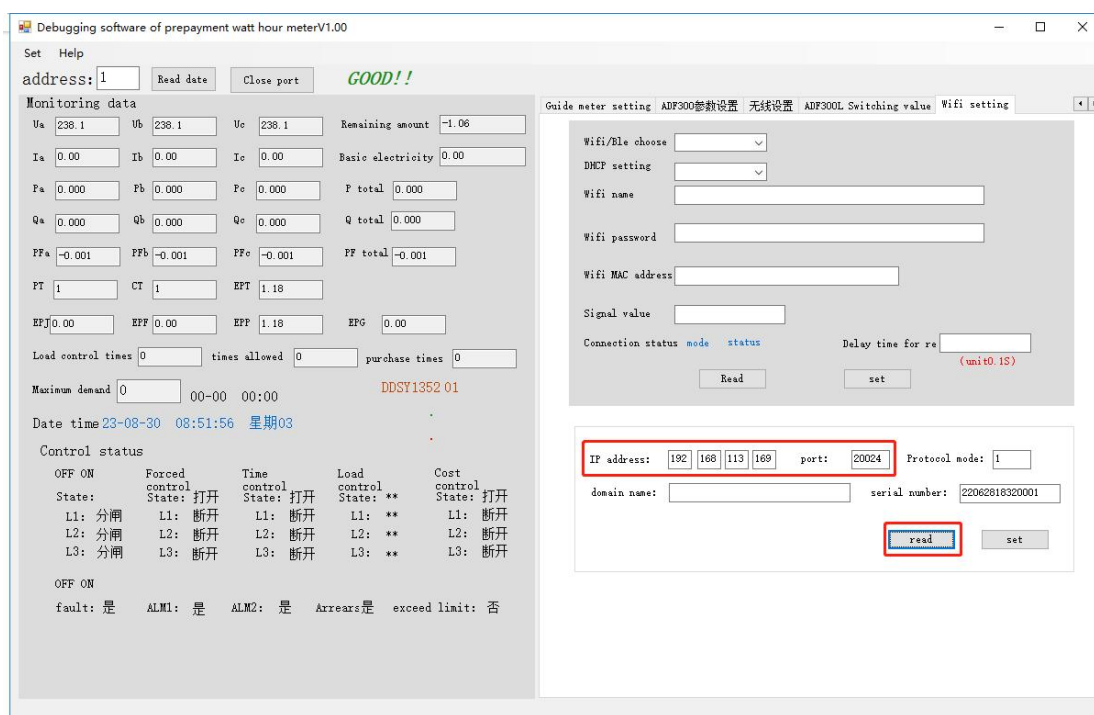
点击读取数据 Click **Read Data**



三. 设置服务器的 ip 地址端口号（如果是连接安科瑞 IOT 云平台，出厂时默认设置完毕，无需进行此操作）**Set the ip address and port number of the server (if it is connected to the Acrel IOT cloud platform, the default setting is completed before delivery, and there is no need to perform this operation)**

设置服务器平台参数“IP”和“port”，电表默认上传间隔 30 分钟和心跳时间 5 分钟
Set the server platform parameters "IP" and "port". The default upload interval of the electricity meter is 30 minutes and the heartbeat time is 5 minutes.

- 1-读取参数 Click **Read**
- 2-设置 IP 地址和端口号 Set IP address and port number
- 3-点击设置 Click **Set**



四. 设置 WiFi 参数 Set WiFi Parameter

(通过调试软件)

红色箭头→确认是 wifi 模式

点击右上角 wifi setting

2、点击 Read

3、WiFi choose 栏选择 wifi

4、设置 wifi 账号和密码

5、点击 Set

