



# TURNKEY SERVICE PREFAB HOUSE CHINA-MANUFACTURER

25 years experience in prefabricated house

15 years experience in prefabricated house export



Nantong Huasha Movable House Co., Ltd.



# ABOUT OUR COMPANY

## **Nantong Huasha Movable House Co.,Ltd**

is located in beautiful Nantong ,China which is nearby Shanghai and established in 2005,our factory production area more than 10,000m<sup>2</sup>,50 employee with professional technical skills,annual value over 10 million US dollars.We here mainly produce container house, expandable house,light steel structure house,movable pod,providing the innovative one-stop solution that include site selection,design,production,installation and technical guidance service.Our products are exported to more than 100 countries and regions over the world such as United States,Canada,Australia,Chile,South Africa etc.Besides,we also have the global team representative office in Turkey,Thailand,France,Mexico and Dubai.

Our company are always committed to providing the clients with the most comfortable,and affordable house.





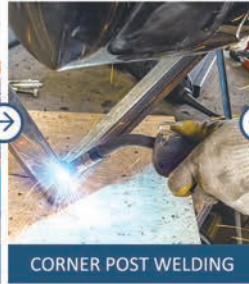
# ABOUT OUR PRODUCT PROCESS



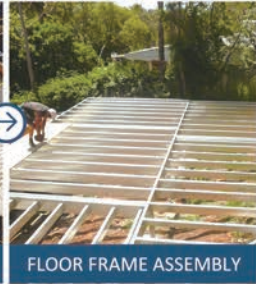
STEEL SHEET UNCOILING



PURLIN FABRICATING



CORNER POST WELDING



FLOOR FRAME ASSEMBLY



STANDARD PACKAGING



WATERPROOF TEST



STACKING AND LOADING TEST



CIRCUIT INSTALLATION



AUTOMATIC WELDING

## Main categories:

Folding Container House,  
Light Steel Prefab House,  
Container House



Create with the heart,  
Build with the mind.



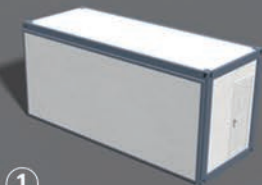


# EXPANDABLE CABIN

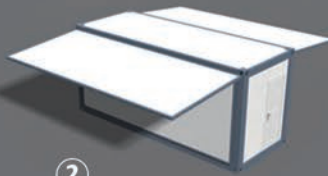


It takes one day for 6 persons to complete the installation. It includes one parents' bedroom and one child's bedroom.

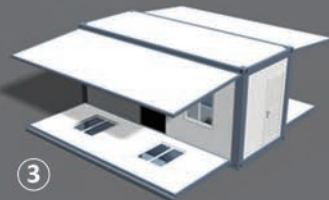
The toilet, paperholder, shower, sink, mirror, towel rack are all installed in our factory. Customers only need to connect supply and drainage pipes locally.



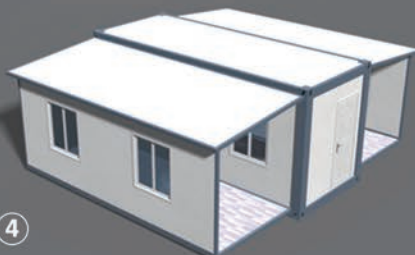
①



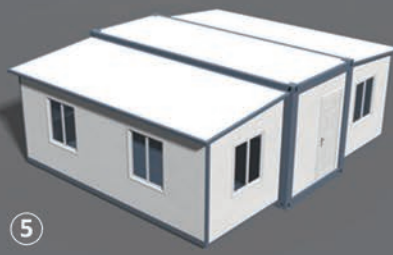
②



③



④



⑤





## HS-035A20 20FT 37M<sup>2</sup> EXPANDABLE HOUSE

The pattern inside the house can be changed according to your request. We can also provide some household appliances, such as air conditioning, refrigerator, dishwasher, oven etc.. If you think the white wall is very monotonous, don't worry, we have a variety of internal and external wall decorative boards for you to choose.



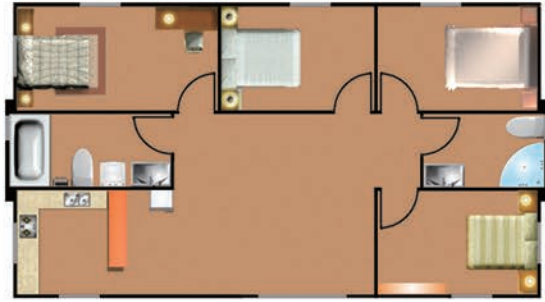
## HS-035A30 30FT 60M<sup>2</sup> EXPANDABLE HOUSE



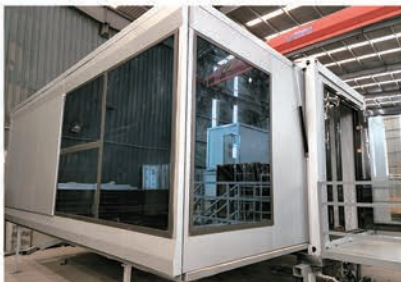




# HS-035A40 40FT 77M<sup>2</sup> EXPANDABLE HOUSE



## APPEARANCE DESIGN





# CONTAINER CONVERSION



Discover HUASHA, an innovative and exciting concept of transforming shipping containers into unique, individual units; each one to a bespoke design; the epitome of creativity and convenience combined!

Our HUASHA are suitable for a vast array of uses including holiday homes, as an alternative to house extensions and for commercial, retail, marketing and recreational opportunities.

Let "Beyond the Hall Door" successfully fuse their design flair and project management expertise to create the ideal solution to your need for space!

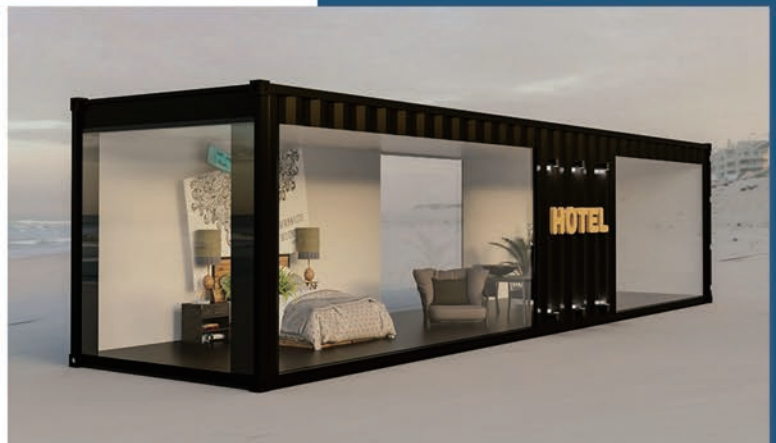
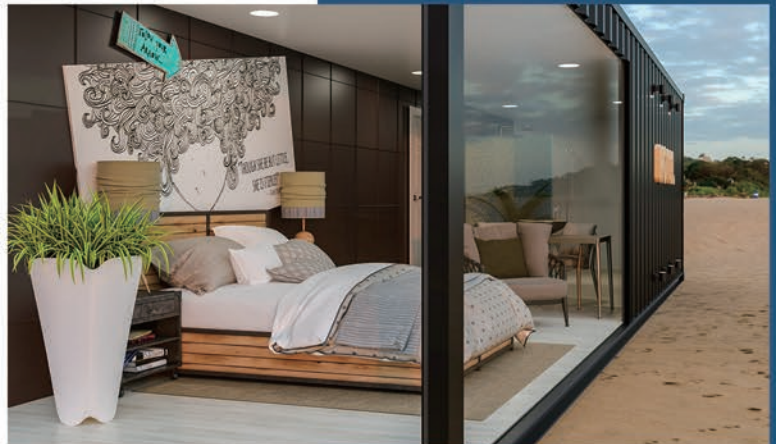
Containers are extremely versatile, and combined with our creative flair and design expertise we can build your customised solution... endless possibilities, limited only by your imagination!

## **BENEFITS OF USING SHIPPING CONTAINERS-FOR QUICK ACCOMMODATION**

**It's cheap** - You wouldn't want to spend too much money constructing a house to be used for just a short time. Sea containers provide a cheap alternative with comparable durability relative to other "quick" construction materials.

**Fast to assemble** - There are only two major tasks involved in constructing a simple house using containers: Getting it to the location and insulation. And if the area of use has a moderate climate, insulation might not be necessary. Just ventilation. Nothing a blowtorch can't do.

**Reuse value** - After you are through using the accommodation, the container can be stripped and used for another purpose.





## ✓ SC-01 20FT CONTAINER COFFEE BAR

The entire planning was carried out at the factory in a way that allowed its mobility and the possibility for the construction to be placed anywhere, while the only factors to be cared for was the construction's access to electricity and water only. No further work had to be carried out for the construction to reach its full potential. Using transparent doors and large windows to allow the construction to be connected to its external environment and to allow natural day light to enter. Maximizing a 20-foot container space area for all the needs of an mobile coffee shop. The container floor covered with cement board.



## ✓ SC-02 20FT CONTAINER SHOW ROOM



## ✓ SC-03 40FT CONTAINER LIVING ROOM



## ✓ SC-04 STREET FOOD CONTAINER CONVERSION BAR





# LIGHT STEEL STRUCTURE



**Characteristics** - Structural steel differs from concrete in its attributed compressive strength as well as tensile strength.

**Strength** - Having high strength, stiffness, toughness, and ductile properties, structural steel is one of the most commonly used materials in commercial and industrial building construction.

**Constructability** - Structural steel can be developed into nearly any shape, which are either bolted or welded together in construction. Structural steel can be erected as soon as the materials are delivered on site, whereas concrete must be cured at least 1-2 weeks after pouring before construction can continue, making steel a schedule-friendly construction material.

**Fire resistance** - Steel is inherently a non-combustible material. However, when heated to temperatures seen in a fire scenario, the strength and stiffness of the material is significantly reduced. The International Building Code requires steel be enveloped in sufficient fire-resistant materials, increasing overall cost of steel structure buildings.

**Corrosion** - Steel, when in contact with water, can corrode, creating a potentially dangerous structure. Measures must be taken in structural steel construction to prevent any lifetime corrosion. The steel can be painted, providing water resistance. Also, the fire resistance material used to envelope steel is commonly water resistant.

**Mold** - Steel provides a less suitable surface environment for mold to grow than wood.





## V LIGHT STEEL HOUSE



## V ENGINEERING CASES



There are no limitations when you think about your house plan and design. HUASHA team of professional engineers will receive your requirements or hand drafted plan and work on it to be presented as a light steel house solution. Light gauge steel frame construction technology is becoming the most popular worldwide thanks to the many advantages it offers such as durability, security, faultless structure, environment-friendly, flexibility and most importantly affordability. Get your dream steel house in a very short time.



# MODULAR HOUSE



Modular homes are residences built in a controlled factory environment in sections, or modules, and then transported to the construction site. There, they are installed on permanent foundations and completed by professional installers.

But there's even more to like about prefab modular homes. Modular homes can reduce construction time by more than 35 percent, getting you into your new home faster so you can enjoy it longer.

Site-built homes can take many weeks to complete, while modular homes are assembled on site and usually finished within a week.





✓ **MH-015**  
**ONE BEDROOMS CABIN**



✓ **MH-016**  
**70SQM HOLIDAY HOUSE WITH LOFT**



✓ **MH-017**  
**120SQM MODULAR HOUSE**



**✓ MH-018**  
**64SQM-2 BEDROOMS**



**✓ MH-019**  
**20SQM-1 BEDROOM**



**✓ MH-020**  
**200SQM-4 BEDROOMS**





# MOVABLE POD



## QUICK-ASSEMBLED CONTAINER 2 PEOPLE/ HALF AN HOUR

Expandastore - man portable, flat-packed building / storage container providing safe & secure storage.

All components are light and slim making the expandastore ideal for assembly and use in locations where space may be restricted.

Assembly is quick and simple and requires only a socket set and screwdriver. Once assembled the unit can be easily moved by crane or forklift.

Double locking system on doors for added security.

Choice of 5 lengths: 2,3,4,5 or 6 meters

Choices of finish: galvanized, green or blue powder coated.

Term	Size(mm)			Price and Package		
	Width	Height	Length	Weight(kg)	Package(20GP)	Package(40GP)
Storage	2150	2150	2000	340	12	36
			3000	450	12	24
			4000	560	6	18
			5000	670	6	12
			6000	780	6	12
Wall	Galvanized steel plate(0.8/1.0/1.2mm thickness)					
Floor	Solid wood(must be fumigated)					
Delivery Detail	15 to 30 days					

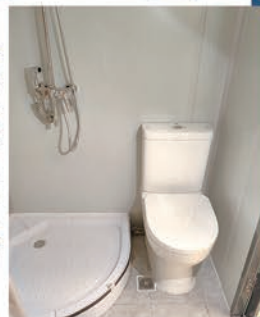
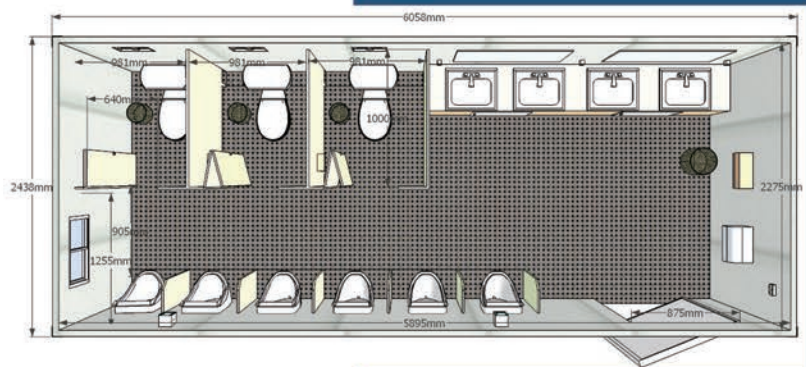




# Bathroom Pod



Everything of the bathroom pod is assembled in the factory. You can use a forklift or crane to move them, each weighing approximately 500-600kg, including a shower room, toilet, basin, etc. Its roof is made of whole steel plate, so it won't leak. Power standards comply with various national standards





**▼ HST-032  
BATHROOM POD**



**SPEC.**

1120×1420×2300 (8PCS/20'GP)  
1120X1480X2520 (16PCS/40HQ)

**ITEMS**

Basin/Mirror/Toilet/Shower heads/PVC floor/  
Small window/Door/Electric/Plumbing

**▼ HST-033  
BATHROOM POD**



**SPEC.**

2250×1420×2300 (4PCS/20'GP)  
2250X1480X2520 (8PCS/40HQ)

**ITEMS**

Forklift hole/Vent/Shower room/Basin/Mirror  
Paper holder/Toilet/Small window/Door/  
PVC floor/Power system/Plumbing

**▼ HST-034  
BATHROOM POD**



**SPEC.**

1200×1200×2350  
(8PCS/20'GP)(18PCS/40HQ)

**ITEMS**

**▼ HST-035  
BATHROOM POD**



**SPEC.**

1200×1200×2350  
(8PCS/20'GP)(18PCS/40HQ)

**ITEMS**



# FOLDING HOUSE

SIMPLE LIFE CAN BE FOUND HERE RIGHT IN HUASHA HOME



In a few decades ago, you can hardly imagine that building a house just need half a day. Now, folding house can help us achieve this imagination. **The biggest advantage of the folding house is its rapid installation.** While this house isn't going to win any awards for looks, the fact that it opens up in only a few hours is pretty impressive. This is obviously geared to remote location work sites, private living, or commercial use and I think it was worth owning!

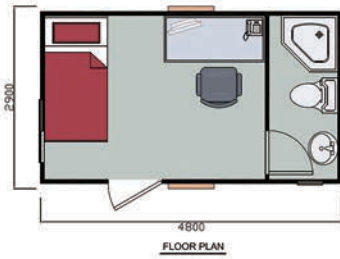
The package size of this kind of folding House is only 510~720mm wide, the transportation of this house is very convenient, and also the installation is also very fast, clients only need to open the roof and foundations on two sides and fix walls locally. Clients can choose from **14m<sup>2</sup> to 60m<sup>2</sup>**, the floor plan can be designed according to your needs. Quick installation, easy transportation, and low cost, these advantages make this product popular in Middle East, South Africa, Australia and other regions. Different customer needs and the local climate, we have a wide range of materials to choose from. There are various of materials to be chosen from according.



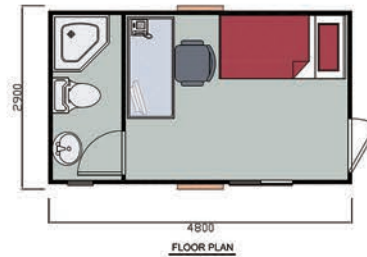


# 14m<sup>2</sup> FOLDING HOUSE

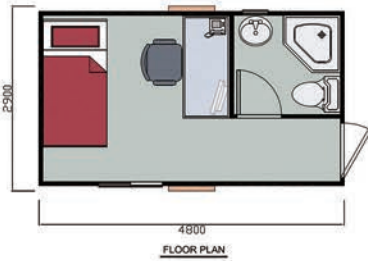
The transportation convenience, good sealing performance, overall migration, high stability, good shock resistance, light weight heat and sound insulation.



LTH-01



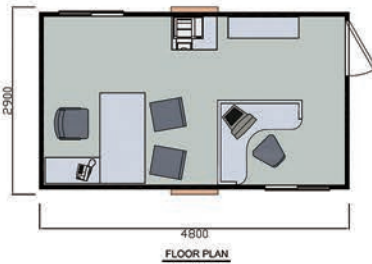
LTH-02



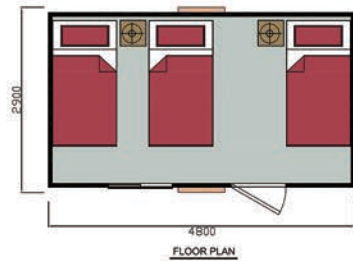
LTH-03



LTH-04



LTH-05



LTH-06

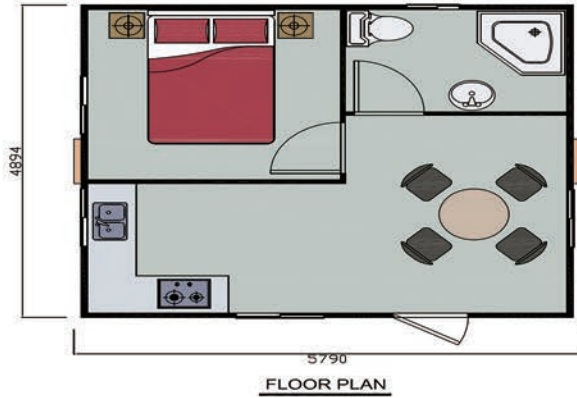


LTH-08

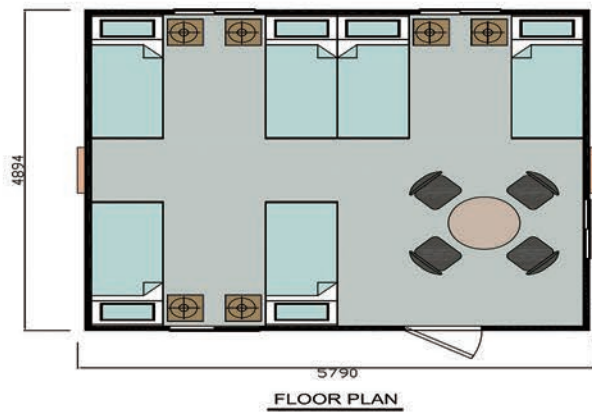


# 28m<sup>2</sup> FOLDING HOUSE

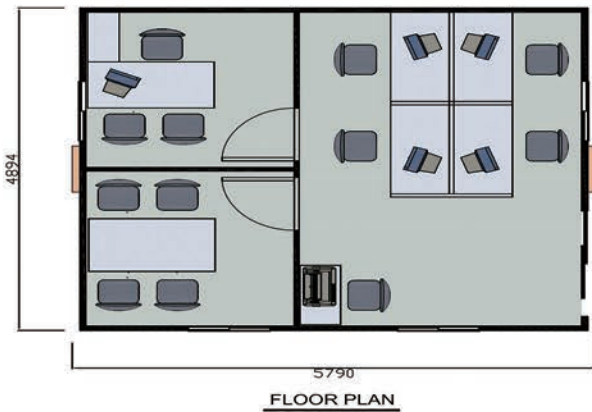
The transportation convenience, good sealing performance, overall migration, high stability, good shock resistance, light weight heat and sound insulation.



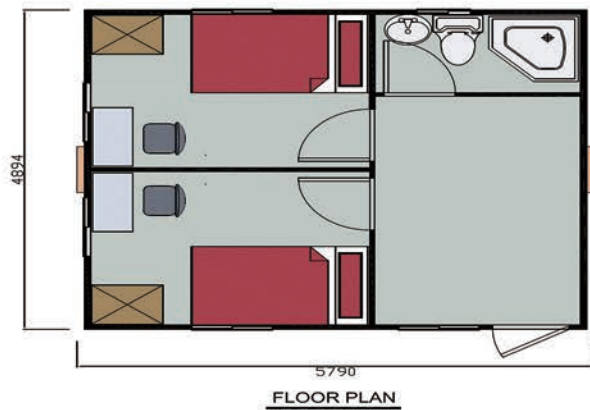
LT-01



LT-02



LT-03

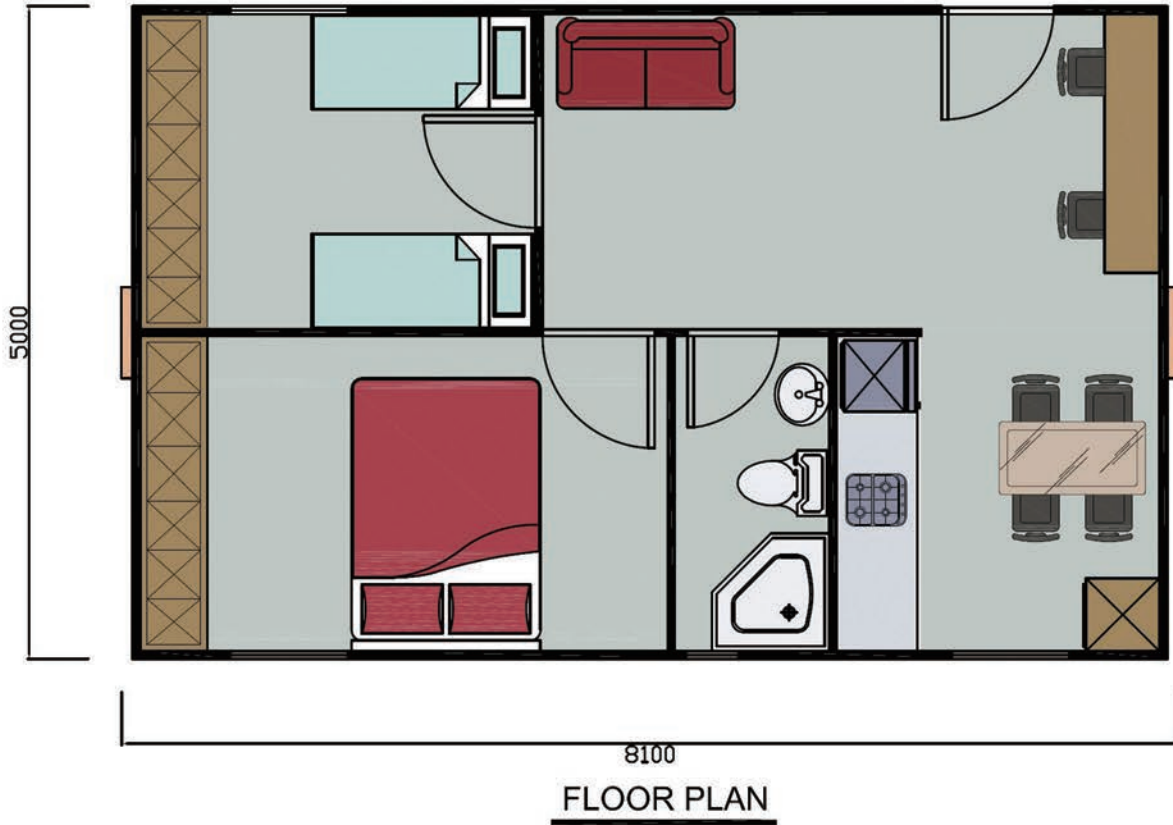


LT-04



# 40m<sup>2</sup> FOLDING HOUSE

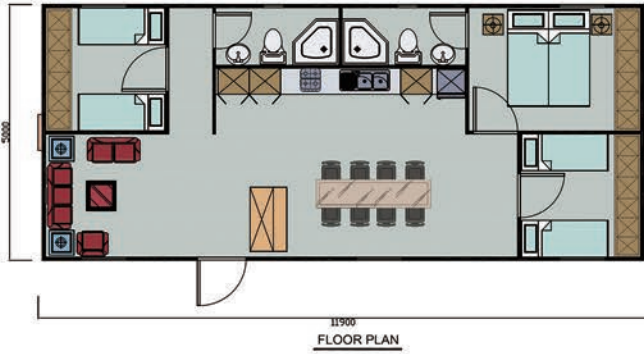
The transportation convenience, good sealing performance, overall migration, high stability, good shock resistance, light weight heat and sound insulation.



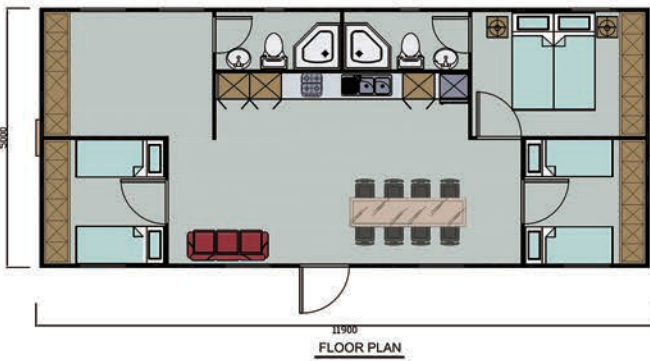
LT-40

# 60m<sup>2</sup> FOLDING HOUSE

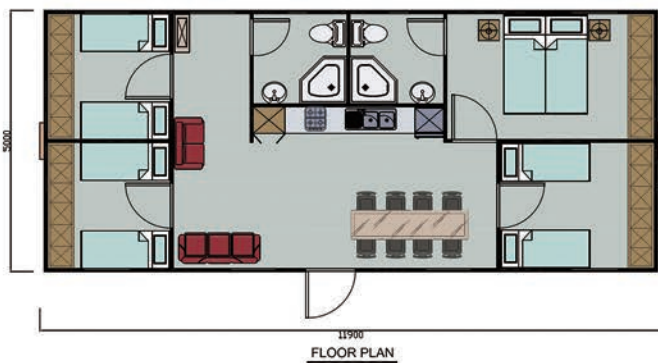
The transportation convenience, good sealing performance, overall migration, high stability, good shock resistance, light weight heat and sound insulation.



LT-50



LT-70B



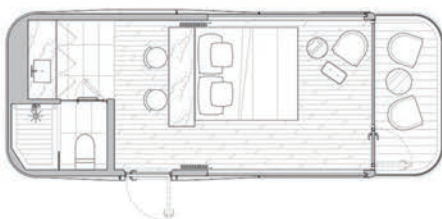
LT-70A



# SPACE CAPSULE

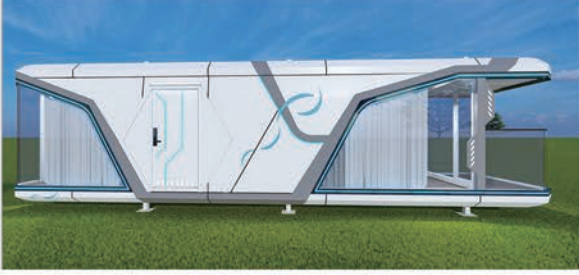


To build future houses with interstellar wandering and science fiction future as the creative elements is a new type of intelligent mobile building cabin, installed at any time, green energy saving and environmental protection, with the batch and rapid production of factories Integrated ground installation, can be moved at any time not to occupy the construction land index, green energy conservation and environmental protection and other innovative characteristics.





**✓ SPACE CAPSULE/A-13**



**✓ SPACE CAPSULE/A-22**



**✓ SPACE CAPSULE/A-33**



**✓ SPACE CAPSULE/A-62**



**✓ SPACE CAPSULE/B-63**



**✓ SPACE CAPSULE/B-73**



**✓ SPACE CAPSULE/Q-13**



**✓ SPACE CAPSULE/Q-23**



**✓ SPACE CAPSULE/S-12**



**✓ SPACE CAPSULE/S-23**





# INTEGRATED CABIN



Integrated Cabin looks like shipping container. The customers don't need to install it locally as the cabin is complete. Its electricity system and plumbing will be installed at the factory. Especially, the electrical wiring is hidden in the panel. The cabin can be designed as a coffeeshop, home or an office. Its largest width is 2200mm because it will be loaded into 40ft HQ container to ship. Its height can be 2520mm or 2800mm. Its length can be chosen from 20ft to 40ft. You can move it to any place because it's portable. Connecting water and electricity, you can use it at once.





## IC-042A20 20FT CONTAINER LIVING ROOM



## IC-042A20 20FT CONTAINER COFFEE BAR



## IC-042A40 40FT CONTAINER LIVING ROOM





# CONTAINER HOUSE

QUICK-ASSEMBLED CONTAINER, 4 PEOPLE / HALF AN HOUR

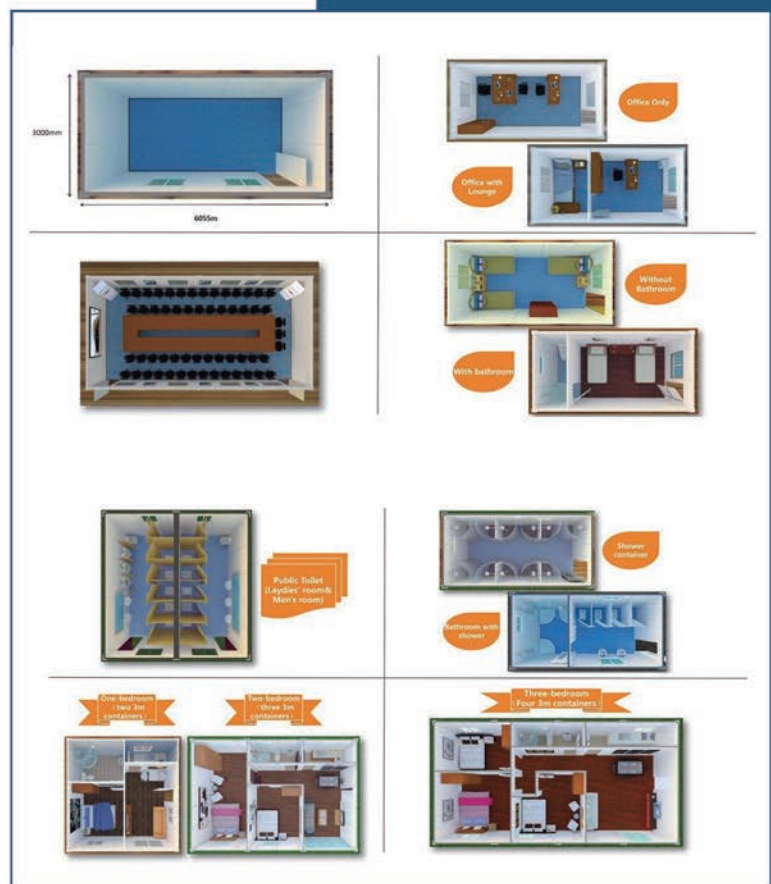


## DEMENTIONS:

6055\* 2435\* 2896mm

6055\*3000 \* 2896mm

The appearance of this product is elegant and the container is designed to be 3 meters wide, 6 meters long and 2.8 meters high. The column adopts 160mm wide-edge design. The shape of the frame-type three-dimensional boxroom conforms to the aesthetics of engineering architecture. The frame adopts the classic spray-painting and baking process, and it is once colored and permanently retained, in line with EU export standards the main-frame color can be customized at will, snow mountain white, zhongjian blue, constructionwork red, engineering ash and so on. The computer is color-matched, and the frame is spray-coated after pickling and phosphating. The anti-rust grade conforms to the national standard, and various colors are customized to highlight the cultural characteristics of the construction enterprise.





# PRODUCT DESCRIPTION

CONTAINER HOUSE



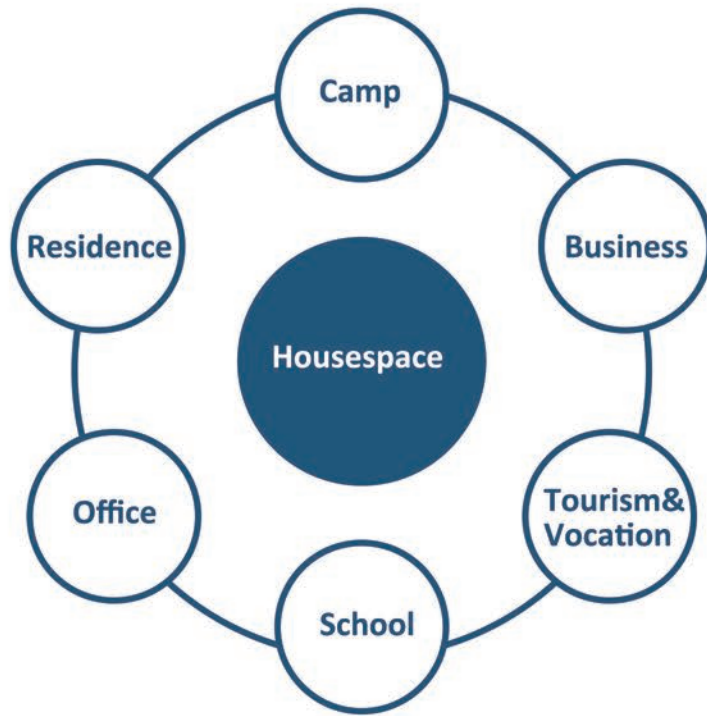
With the promotion of energy conservation and environmental protection, the slogan of recycling, our company has experienced two years of research and development, load-bearing experiments, and launched assembled full-assembled containers. This product is widely used in temporary construction projects of office buildings, workers' quarters, factories, interim housing, municipal engineering, landscaping and other fields.





# ENGINEERING CASES

CONTAINER HOUSE



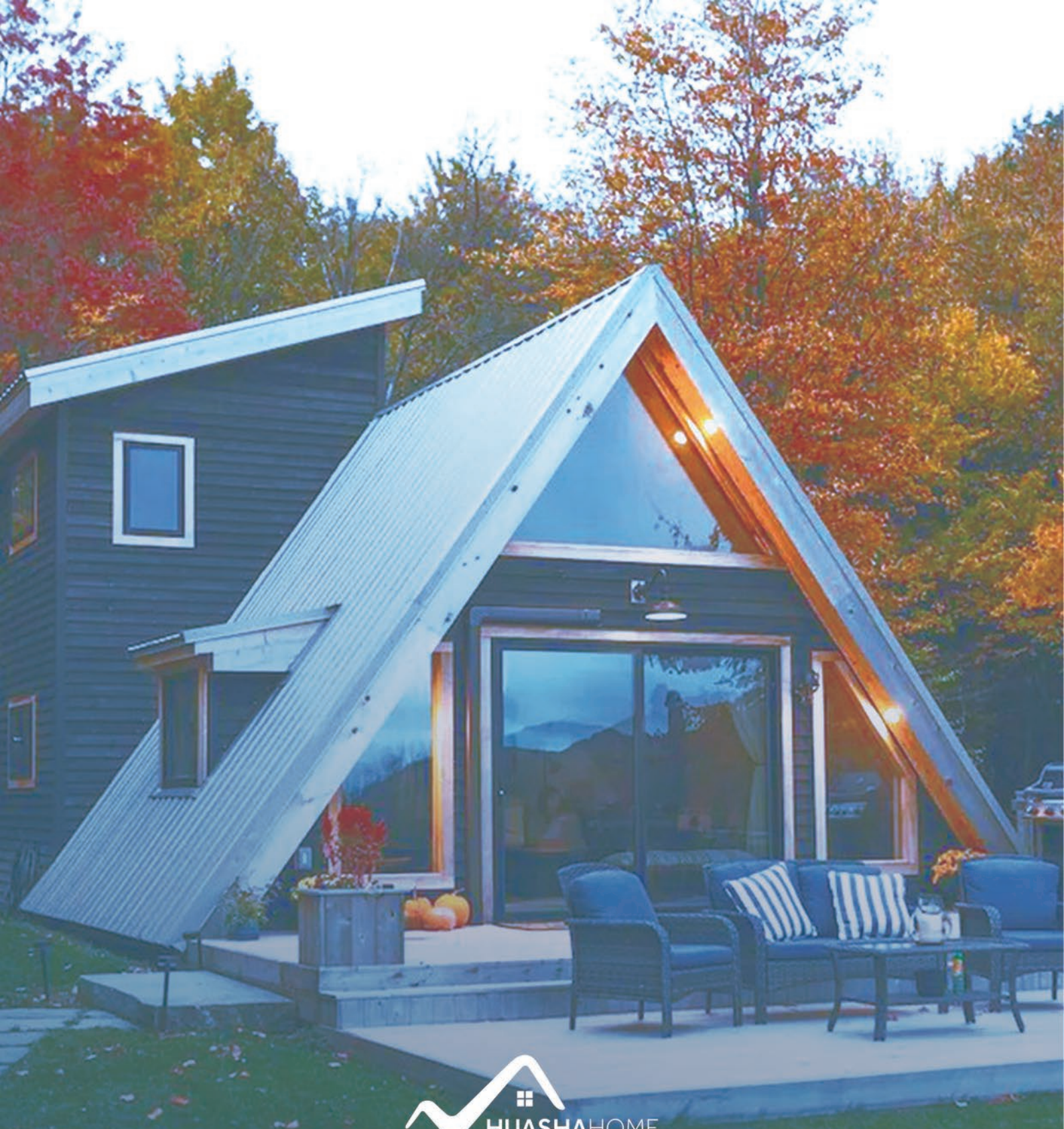
# ONE-STOP SERVICE



# OUR GLOBAL NETWORK & SERVICE







Home is here.

---

Email: [sandygao@hsmovablehouse.com](mailto:sandygao@hsmovablehouse.com)

Mob: +86 15851318800

Whatsapp: +86 15851318800

Add: Liuqiao Industrial Park, Tongzhou District, Nantong City, Jiangsu Province, China