



# ULandPower EV Charging

Product Catalogue 2024

# Core Advantages

## Broad range of connectivity options



Connectivity via WiFi, RS485, Bluetooth and LAN optional, enabling real-time monitoring and management.

## Multiple Charging Start Methods



Multiple charging start Methods: Plug&Play, RFID Card, APP.

## All-in-One Charging Solution



Integrated charging station, app, and platform solution to optimize overall investment.

## Dynamic Load Balancing Solutions



The optional CT-Clamp and CT-BOX integrate easily to dynamically adjust current balancing load and preventing overload.



## High Compatibility Charging Protocol

Achieved OCPP1.6J & OCPP2.0.1, inspected by leading European/American CPO for protocol compatibility.



## Smart Power Management

This design cut electricity bills, and lower energy expenses by 60%.



## Comprehensive Safety Protections

Includes built-in features like over-voltage, over-current, and short-circuit protection for secure operation.



## Leading ISO15118 Application

First in the industry to achieve ISO15118 compliance and TÜV certification for AC chargers.



## Leading Cyber security System

Closed-loop security system with ECDSA P-256, SHA256, AES256 for authentication, encryption, and integrity.



## UNR1-T

- Up to 48A, optional 40A/48A
- SAE J1772 Type 1 Plug
- Smart app control via Wi-Fi or Bluetooth
- Wireless config and Bluetooth maintenance



## UNR1-N

- Up to 48A, optional 40A/48A
- IP66, IK10 for ultimate protection
- Smart app control via Wi-Fi or Bluetooth
- NACS connector



## UN1-A48

- Up to 48A, optional 32A/40A/48A
- SAE J1772 Type 1 Plug, NACS Optional
- Dynamic load balancing Management
- Self-developed for superior electrical safety



## UN2-A48

- Up to 48A, optional 32A/40A/48A
- OCPP1.6J/OCPP2.0.1/ISO15118
- Multiple communication methods
- Smart power management



## UN1-A80

- Up to 80A, optional 70A/80A
- Protection IP65, IK08
- SAE J1772 Type 1 Plug, NACS Optional
- High compatibility charging protocol



## UN2-A80

- Up to 80A, optional 70A/80A
- OCPP1.6J/OCPP2.0.1/ISO15118
- WEB Portal configuration tool
- Lower standby power through intelligent wake-up

# NA EV AC Charger Level 2





## UER1

- Up to 22KW, optional 7KW/11KW/22KW
- Protection IP66, IK10
- IEC 62196-2 Compliant, Type 2 plug
- DC6mA ground fault protection and O-PEN



## UE1

- Up to 22KW for fast charging
- OCPP1.6J/OCPP2.0.1/ISO15118
- Custom segmented charging display
- DC6mA ground fault protection and O-PEN



## UE2

- Up to 22KW, optional 7KW/11KW/22KW
- Enhanced relay arc protection design
- IEC 62196-2 Compliant, Type 2 cable
- Lower standby power through intelligent wake-up



## UES1

- Up to 22KW, optional 7KW/11KW/22KW
- IEC 62196-2 Compliant, Type 2 socket
- High compatibility charging protocol
- DC6mA ground fault protection and O-PEN



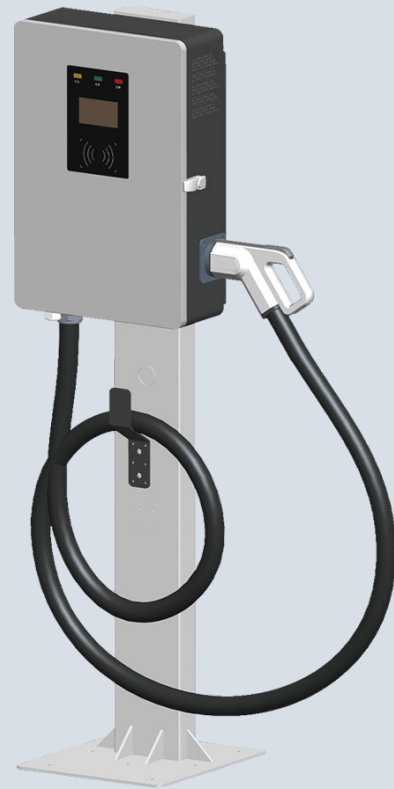
## UES2

- Up to 22KW, optional 7KW/11KW/22KW
- High compatibility charging protocol
- Comprehensive Safety Measures
- Dynamic load balancing Management

# EU EV AC Charger Mode 3







## 20kW/30kW/40kW DC Charger Series

- Supports output up to 1000V
- Flexible Installation Options
- Strong Weather Resistance
- Multiple Safety Protections

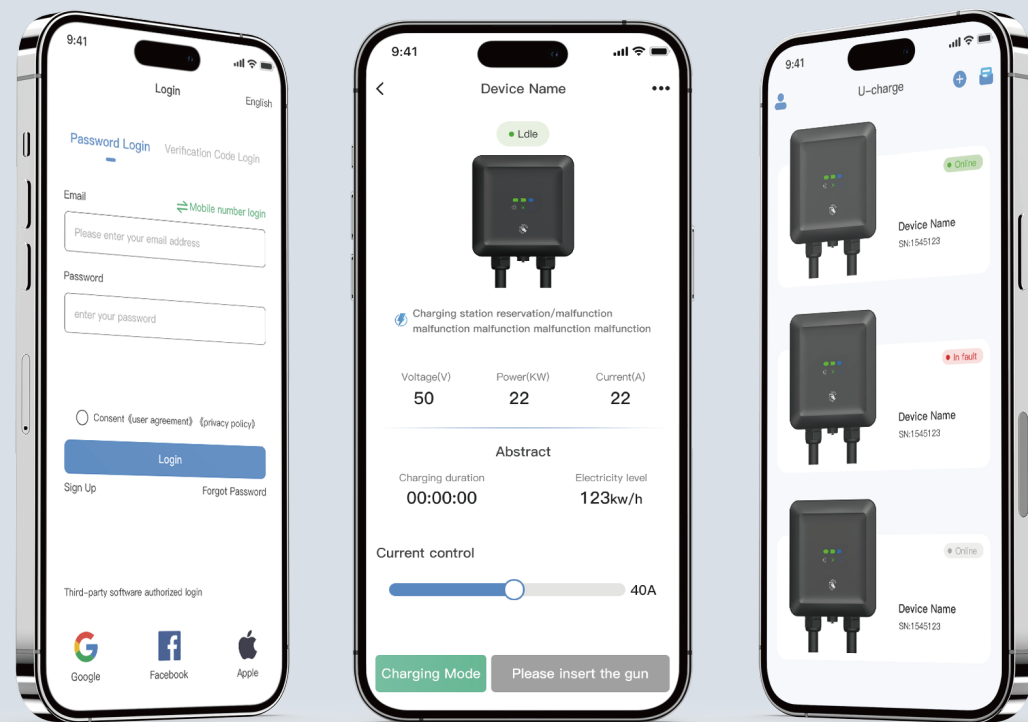


## 120kW-320kW DC Charger Series

- High Reliability
- Strong Weather Resistance
- High-Efficiency Charging Module
- Intelligent Power Management

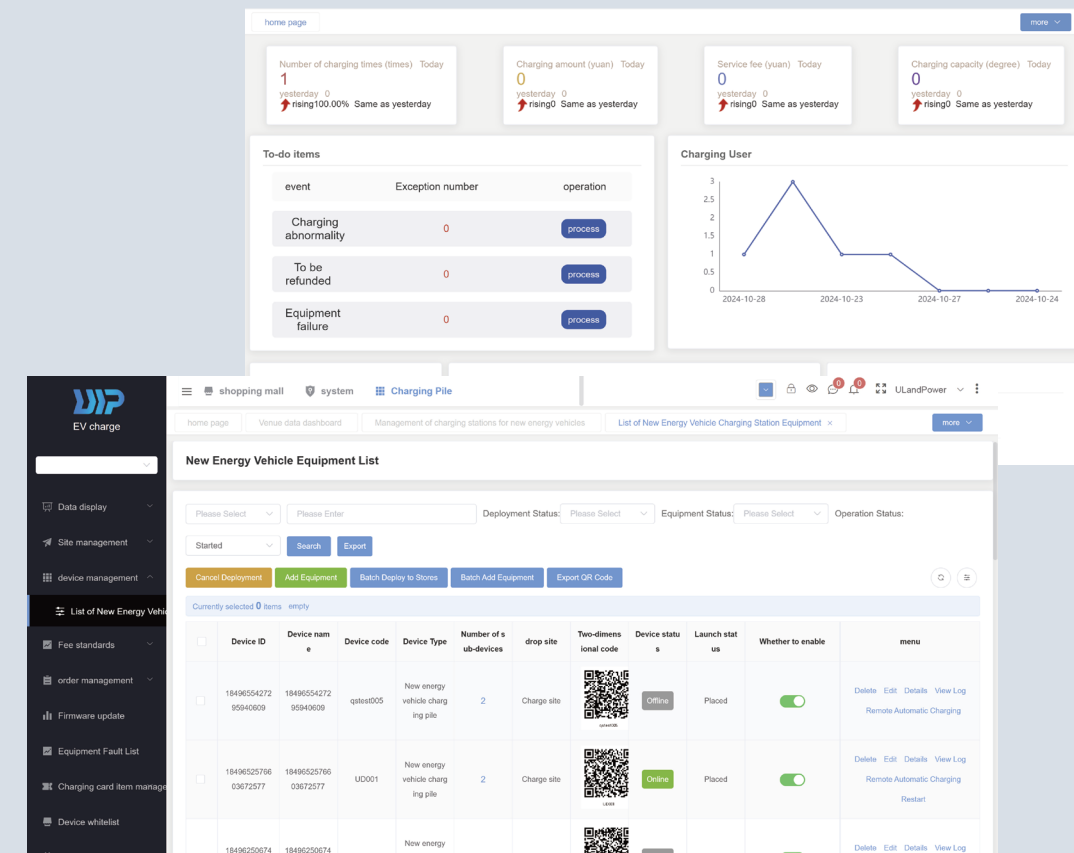
# EU EV DC Charger **Mode 4**





## U-Charger App

- Optimizes charging times and currents to reduce electricity costs.
- Sends real-time notifications for charging status and issues.
- Monitors equipment performance to ensure stable operation.
- Analyzes data to quickly identify and resolve faults.
- Features an intuitive design for easy navigation.
- Allows personalized settings based on user needs.



## U-Energy Platform

- Allows remote configuration from anywhere.
- Isolates data for security while sharing resources.
- Provides real-time insights into station performance.
- Supports flexible private deployment for security needs.
- Uses data collection for diagnostics and improved efficiency.
- Enables global client access for enhanced operational convenience.

# U- Charger App & U-Energy Platform