

## G10B Series

### G10B-Seal Type Subminiature Micro Switch



#### ■ Features

- ◆ IP67 waterproof and dustproof design
- ◆ Small compact size
- ◆ Long life and high reliability
- ◆ Variety of levers optional
- ◆ Widely used in automotive electronics, home appliances and industrial control etc.

#### ■ Application

- ◆ Car
- ◆ Air-conditioner
- ◆ Communication
- ◆ Home Appliance
- ◆ Charging Pile
- ◆ Charging Gun

#### ■ Parameters:

Rating	P1	0.1A 125/250VAC 30VDC
	03	3A 125/250VAC 30VDC
Operating Frequency	Electrical	10~30 cycles/min
	Mechanical	120 cycles/min
Contact Resistance (Initial Value)		100mΩ Max.
Insulation Resistance (at 500 VDC)		100MΩ Min.
Dielectric Strength	Between terminals	600VAC 50~60Hz for 1 Min.
	Between terminals and housing	1,000VAC 50~60Hz for 1 Min.
Operating Temperature		-40°C~ +85°C
Operating Humidity		85% RH Max.
Service Life	Electrical	10,000 cycles
	Mechanical	1,000,000 cycles

## G10B Series Micro Switch Ordering Instruction

G10B	03	150	S	01	A	300	T001	U
Switch Type	Electrical Rating	Max Operating Force at Pin Plunger	Terminal Type	Lever Type	Circuitry	Wires length (AWG Number UL1007 AWG Type 24#)	Custom Code	LOGO
G10B Series Micro-Switch	P1 ENEC/CQC: 0.1A 125/250VAC 30VDC UL/cUL: 40T85 μ 1E4 0.1A 125/250VAC 30VDC	150 150gf Max.	S Solder terminals P Straight PCB terminals	00 No Lever Pin Plunger	A SPDT	Length standard wires 300mm	General	U Unionwell
	03 ENEC/CQC: 3A 125/250VAC 30VDC UL/cUL: 40T85 μ 1E4 0.1A 125/250VAC 30VDC	... Other	E Wires come out from the bottom G Molded lead Wires leads to left side (pin plunger side) F Molded lead Wires leads to right side (opposite to pin plunger side)	02 02# Straight 03 03# Straight ... Other	B SPST-NC C SPST-NO	... Other	T0 Customized according to requirements, the code format is T+serial number XXX, for example: T001 01 ... ... Other	... Other
			M M3 type waterproof housing bottom outlet wires MF M3 type waterproof housing Wires on right side (opposite to the plunger) H M2 flange waterproof housing with 4 holes bottom outlet wires HG M2 flange waterproof housing with 4 holes wires on left side (plunger side) HF M2 flange waterproof housing with 4 holes wires on right side (plunger side) R Right side PCB terminals L Left side PCB terminals					

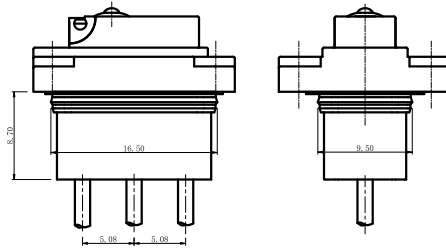
## Terminal Type

◆ Terminal thickness: 0.4mm

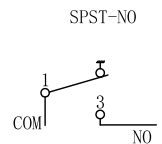
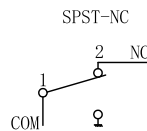
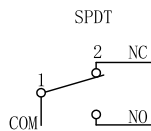
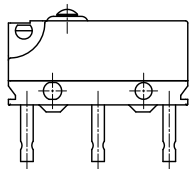
S Type Straight Solder Terminals	P Type Straight PCB Terminals
L Type PCB Left Terminals	R Type PCB Right Terminals
Wires Leads to Right Side (Opposite to Pin plunger) Length: 300mm	Wires Leads to Left Side (Pin Plunger Side) Length: 300mm
Wires Leads to Bottom (300mm Length)	M3 Type Housing, Wires Lead to Bottom

## Terminal Type

### H Type M2 Flange Housing, Wires Lead to Bottom

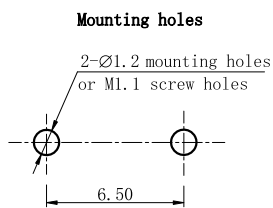


## Circuit

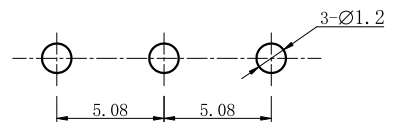


## Mounting Hole Dimensions

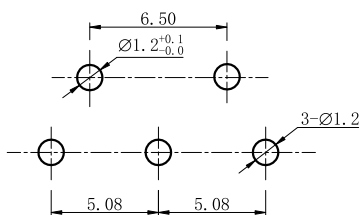
### Mounting Hole Dimensions



### Mounting Hole Dimensions of PCB Terminals

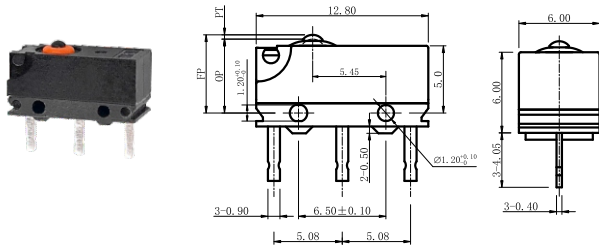


### Left and Right PCB Terminal Mounting Hole Dimensions



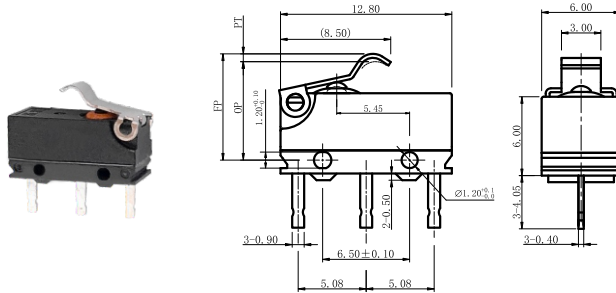
## Dimensions and Operating Characteristics

### ◆ G10B□□-□□□P00AU



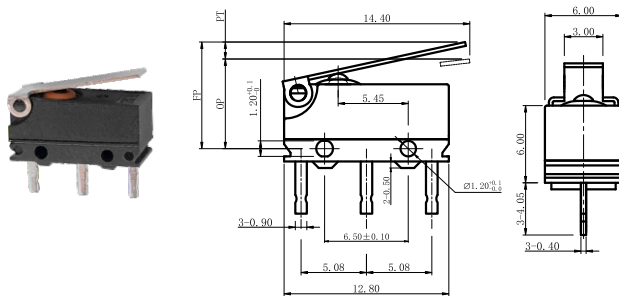
OF Max. (gf)	RF Min. (gf)	PT Max. (mm)	OT Min. (mm)	DT Max. (mm)	FP Max. (mm)	OP (mm)
-150	150	20	0.65	0.20	6.10	5.50 ± 0.30

### ◆ G10B□□-□□□P02AU



OF Max. (gf)	RF Min. (gf)	PT Max. (mm)	OT Min. (mm)	DT Max. (mm)	FP Max. (mm)	OP (mm)	
-150	90	15	1.50	0.30	0.70	8.70	7.30 ± 0.60

### ◆ G10B□□-□□□P03AU



OF Max. (gf)	RF Min. (gf)	PT Max. (mm)	OT Min. (mm)	DT Max. (mm)	FP Max. (mm)	OP (mm)	
-150	50	8.00	3.40	0.30	0.80	9.50	6.80 ± 1.00