

 Shaanxi Shangyida IoT Technology Co., Ltd.

 029-85796416

 shangyidaservice@gmail.com

 <https://www.sydauto.com/>

 3rd Floor, Building B6, No. 176 Biyuan 2nd Road, High-Tech Zone, Xi'an City, Shaanxi Province, China

## Telescopic Skid Steer Loader

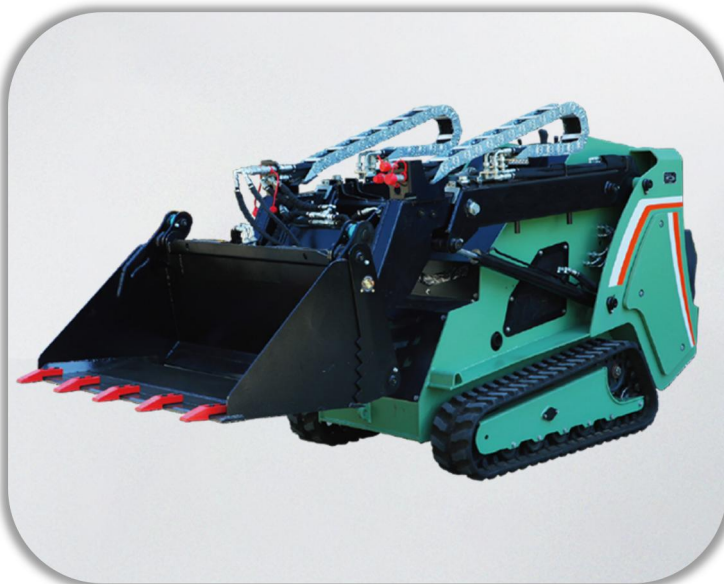
### Product Description

This telescopic boom loader stands out with its simple and intuitive control interface, making it easy to operate without requiring special equipment operation licenses.

With an impressive operating capacity of up to 1,900 lbs (862 kg), it is built to handle demanding tasks, showcasing its power as a top-tier construction machine. Its stand-on operating platform provides a 360-degree panoramic view, ensuring safety during operation while eliminating the need for additional rearview equipment. The platform accommodates operators of all sizes, and its easy access design removes the need to squeeze into a cramped traditional cab, significantly enhancing comfort and efficiency.

Equipped with advanced telescopic boom technology, this loader excels in complex job environments. Whether performing telescopic skid-steer maneuvers in tight spaces, front loader skid-steer operations on varied terrain, or precise excavator-like digging tasks—such as working behind retaining walls or between fully loaded trucks—it delivers exceptional flexibility and adaptability.

In summary, this telescopic boom loader is an ideal choice for construction sites, capable of meeting diverse operational needs with ease.



### Product Features

- ① The control interface is simple and intuitive, easy to master, and does not require special equipment operating permits.
- ② Capable of handling up to 1900 pounds (862 kilograms), this machine is equipped to manage demanding tasks
- ③ A stand-up operating platform offers a 360-degree view, enhancing safety without the need for additional rear-view devices.
- ④ Suitable for operators of all sizes, this design facilitates easy mounting and dismounting without navigating through narrow cabins.
- ⑤ With telescopic arm technology, operators can easily work in complex environments, such as behind retaining walls or between fully loaded trucks.

## Over 60 loader attachments available

