

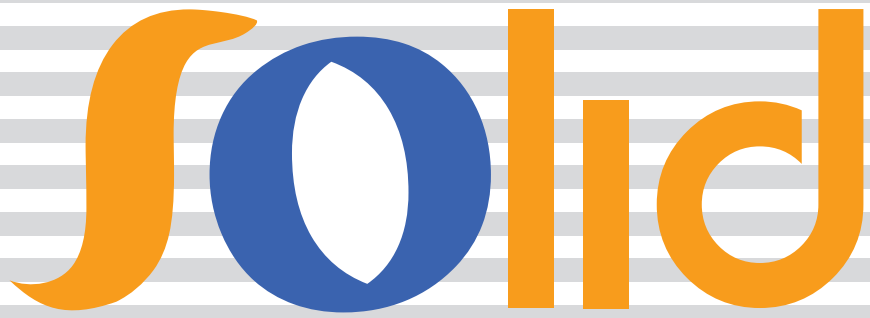


**Solid** 山西索立得工贸有限公司

**Shanxi Solid Industrial Co.,Ltd.**

**MANHOLE COVERS**

**dn**



**For years**

**we supply customers**

**quality goods with quick delivery,**

**we are still**

**trying our best to do better and better.**

**Your demand**

**is what we supply**

**Shanxi Solid Industrial Co.,Ltd.---**

**The company**

**you can rely on to be competitive!**

**We are the castings specialist,  
we are the manhole cover specialist!**

A large, faint, light grey watermark of the "Solid" logo is visible in the background of the lower half of the page.

# Company Profile

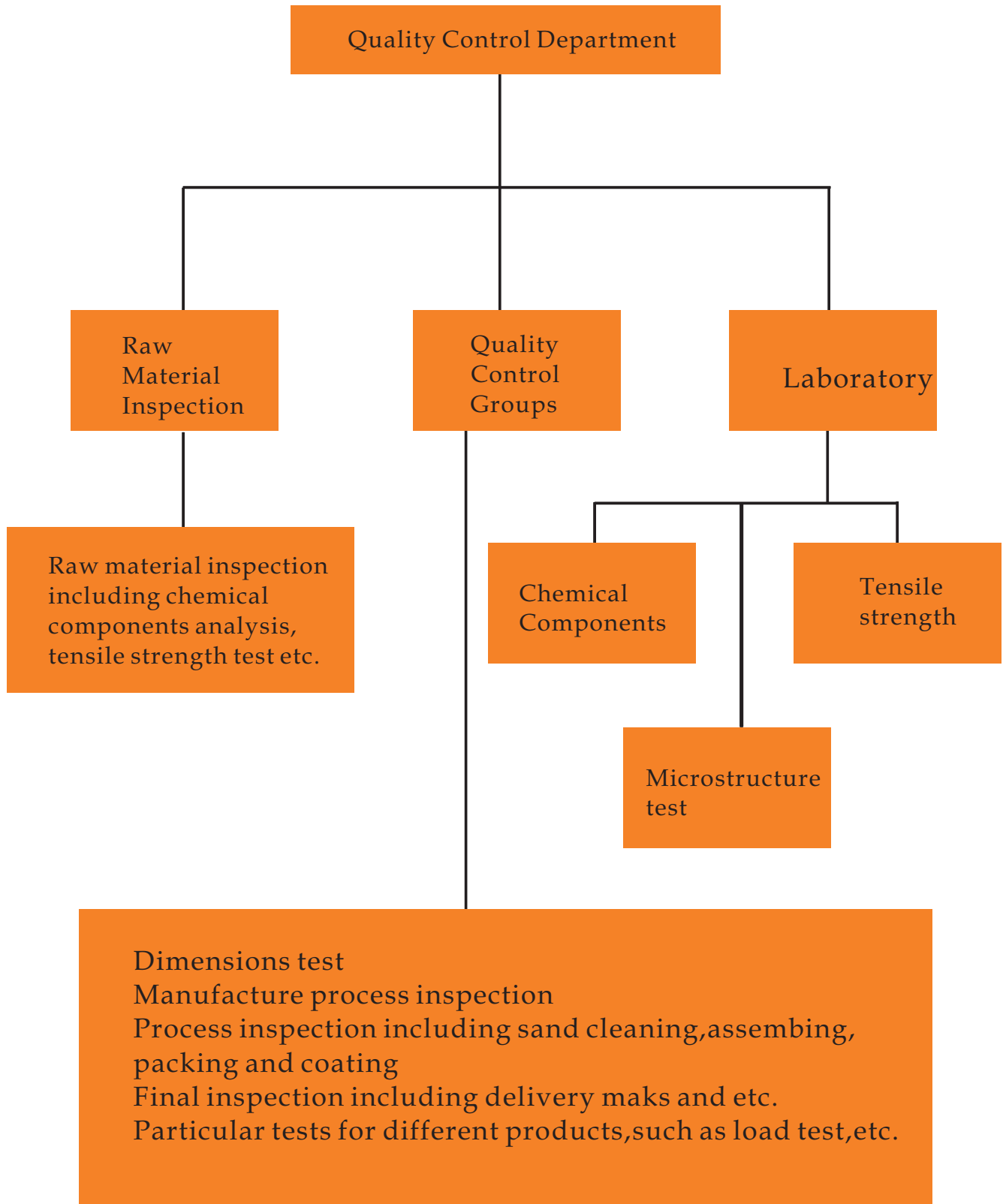
**Shanxi Solid Industrial Co., Ltd.** is a professional manufacturer of ductile iron and cast iron manhole covers located in the heavy industry province of Shanxi, China with rich resources of pig iron, coke, steel and other industrial raw materials. We provide Manhole covers with EN124 standard. Our products are widely exported to Middle East, South East Asia, Africa, South America and North America for more than fifteen years. We can also make castings according to customers' drawings or samples. We are eager to get your inquiries and establish long term mutual benefit cooperation relationship with you. We have our advantages in manufacturing and you have your advantages in sales, we are sure with our working together, we can get one "win-win" situation.



# OUR FACTORY



# Quality Control



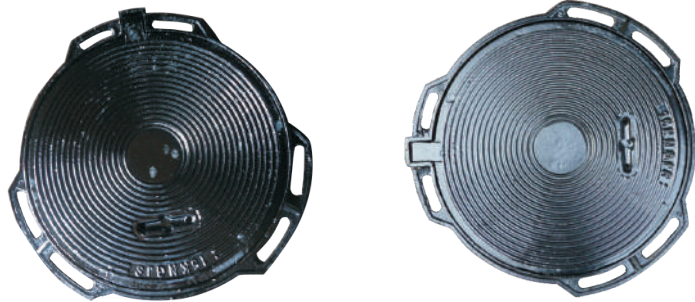
# Manhole Cover Series

- \*Ductile iron
- \*Turning lock
- \*With hinge and gasket
- \*Closed key hole
- \*Different decorative pattern is available



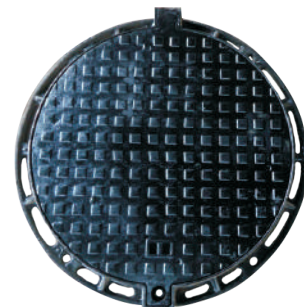
Item Code	Level	Frame size(mm)	Clear opening (mm)	Depth(mm)	Unit weight(kg)
SOLID-001	A15	680	600	30	32

- \*Ductile iron
- \*Light weight
- \*With hinge



Item Code	Level	Frame size(mm)	Clear opening (mm)	Depth(mm)	Unit weight(kg)
SOLID-002	A15	510	435	35	13.5

- \*Ductile iron
- \*Bolt lock
- \*With hinge and gasket



Item Code	Level	Frame size(mm)	Clear opening (mm)	Depth(mm)	Unit weight(kg)
SOLID-003	B125	680	550	50	32

# Manhole Cover Series

- \*Ductile iron
- \*Lock (available)



Item Code	Level	Frame size(mm)	Clear opening (mm)	Depth(mm)	Unit weight(kg)
SOLID-004	B125	600	450	30	18

- \*Ductile iron
- \*Single seal
- \*Two closed key holes



Item Code	Level	Frame size(mm)	Clear opening (mm)	Depth(mm)	Unit weight(kg)
SOLID-005	B125	500*500	400*400	35	19
SOLID-006	B125	600*600	500*500	35	27

- \*Ductile iron
- \*Closed key hole



Item Code	Level	Frame size(mm)	Clear opening (mm)	Depth(mm)	Unit weight(kg)
SOLID-007	B125	750*750	600	70	52

# Manhole Cover Series

- \*Ductile iron
- \*Single seal
- \*Two closed key holes



Item Code	Level	Frame size(mm)	Clear opening (mm)	Depth(mm)	Unit weight(kg)
SOLID-008	B125	300*300	200*200	30	7
SOLID-009	B125	400*400	300*300	30	9
SOLID-010	B125	500*500	400*400	35	16
SOLID-011	B125	550*550	450*450	35	20
SOLID-012	B125	600*600	500*500	35	24
SOLID-013	B125	700*700	600*600	40	35
SOLID-014	B125	800*800	700*700	45	46
SOLID-015	C250	300*300	200*200	30	8
SOLID-016	C250	400*400	300*300	35	11
SOLID-017	C250	500*500	400*400	40	21
SOLID-018	C250	550*550	450*450	40	24
SOLID-019	C250	600*600	500*500	45	29
SOLID-020	C250	700*700	600*600	50	48
SOLID-021	C250	800*800	700*700	60	58
SOLID-022	C250	900*900	800*800	60	80



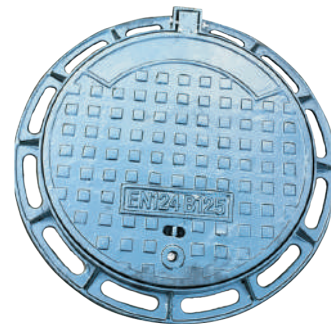
# Manhole Cover Series

- \*Ductile iron
- \*Lock (available)
- \*With hinge and gasket



Item Code	Level	Frame size(mm)	Clear opening (mm)	Depth(mm)	Unit weight(kg)
SOLID-023	B125	500*500	370	50	15
SOLID-024	C250	600*600	400	50	34
SOLID-025	C250	500*500	370	50	20

- \*Ductile iron
- \*Turning lock
- \*With hinge and gasket
- \*Closed key hole
- \*Different decorative pattern is available



- \*Ductile iron
- \*Bolt lock
- \*With hinge and gasket

Item Code	Level	Frame size(mm)	Clear opening (mm)	Depth(mm)	Unit weight(kg)
SOLID-026	B125	750	570	50	34
SOLID-027	C250	750	570	100	44

## Manhole Cover Series

- \*Ductile iron
- \*Light weight
- \*With hinge



Item Code	Level	Frame size(mm)	Clear opening (mm)	Depth(mm)	Unit weight(kg)
SOLID-028	B125	700	510	60	24

- \*Ductile iron
- \*With hinge and gasket
- \*Closed key hole
- \*Different decorative pattern is available



Item Code	Level	Frame size(mm)	Clear opening (mm)	Depth(mm)	Unit weight(kg)
SOLID-029	C250	870*840	600*600	120	68

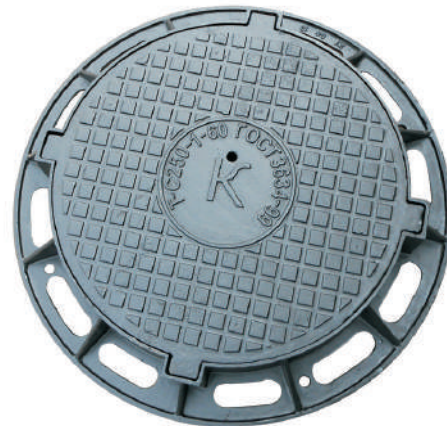
## Manhole Cover Series

- \*Ductile iron
- \*Spring lock
- \*With hinge and gasket
- \*Closed key hole
- \*Different decorative pattern is available



Item Code	Level	Frame size(mm)	Clear opening (mm)	Depth(mm)	Unit weight(kg)
SOLID-030	C250	850*850	600	100	62

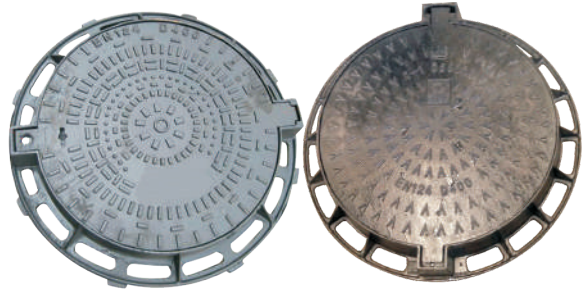
- \*Ductile iron
- \*With 4 ears no hinge



Item Code	Level	Frame size(mm)	Clear opening (mm)	Depth(mm)	Unit weight(kg)
SOLID-031	C250	870	640	80	56

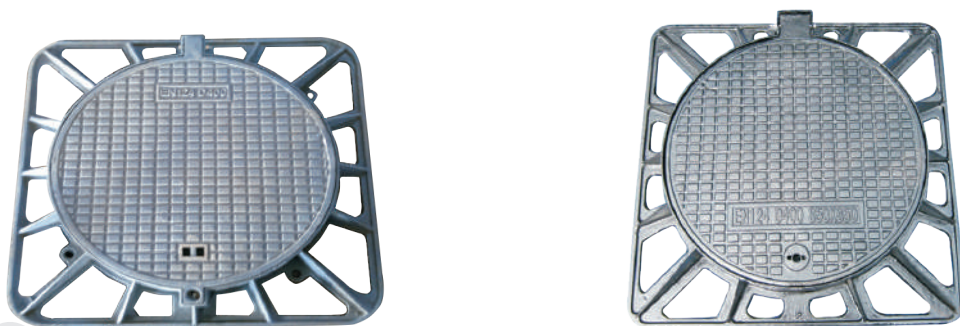
## Manhole Cover Series

- \*Ductile iron
- \*Different lock system available
- \*With hinge and gasket
- \*Closed key hole
- \*Different decorative pattern is available



Item Code	Level	Frame size(mm)	Clear opening (mm)	Depth(mm)	Unit weight(kg)
SOLID-032	B125	850	600	40	38
SOLID-033	C250	850	600	100	42
SOLID-034	D400	850	600	100	56
SOLID-035	D400	850	600	100	53

- \*Ductile iron
- \*Bolt lock
- \*With hinge and gasket
- \*Closed key hole
- \*Different decorative pattern is available



Item Code	Level	Frame size(mm)	Clear opening (mm)	Depth(mm)	Unit weight(kg)
SOLID-036	C250	850*850	600	80	55
SOLID-037	D400	850*850	600	100	60

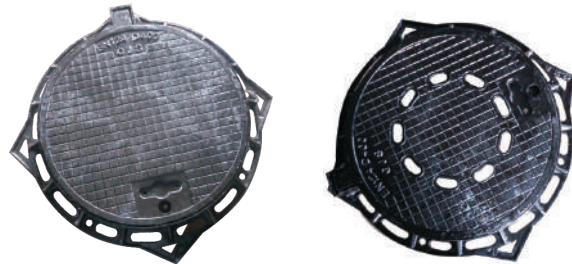
## Manhole Cover Series

- \*Ductile iron
- \*Double lock system
- \*Double hinge



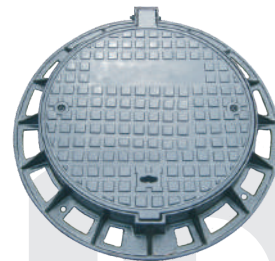
Item Code	Level	Frame size(mm)	Clear opening (mm)	Depth(mm)	Unit weight(kg)
SOLID-038	C250	850*850	600	80	48
SOLID-039	D400	850*850	610	100	63

- \*Ductile iron
- \*With lock
- \*With hinge and gasket
- \*Venthole available



Item Code	Level	Frame size(mm)	Clear opening (mm)	Depth(mm)	Unit weight(kg)
SOLID-040	C250	730	570	80	31.5
SOLID-041	D400	730	570	80	40

- \*Ductile iron
- \*Different lock system available
- \*With hinge and gasket



Item Code	Level	Frame size(mm)	Clear opening (mm)	Depth(mm)	Unit weight(kg)
SOLID-042	D400	850	600	100	65

# Manhole Cover Series

- \*Ductile iron
- \*Different lock system available
- \*With hinge and gasket



Item Code	Level	Frame size(mm)	Clear opening (mm)	Depth(mm)	Unit weight(kg)
SOLID-043	D400	790	610	100	65
SOLID-044	D400	675	600	50	48
SOLID-045	D400	800	600	100	65

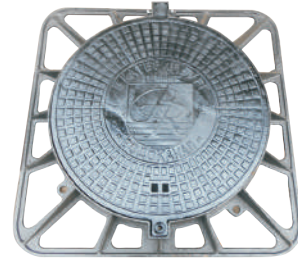
- \*Ductile iron
- \*Lock (available)
- \*With hinge and gasket



Item Code	Level	Frame size(mm)	Clear opening (mm)	Depth(mm)	Unit weight(kg)
SOLID-046	D400	850	600	100	50

## Manhole Cover Series

- \*Ductile iron
- \*Bolt lock
- \*With hinge and gasket
- \*Closed key hole
- \*Different decorative pattern is available



Item Code	Level	Frame size(mm)	Clear opening (mm)	Depth(mm)	Unit weight(kg)
SOLID-047	D400	850*850	600	100	60

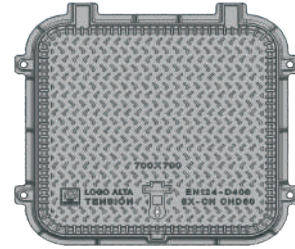
- \*Ductile iron
- \*Single seal
- \*Closed key hole



Item Code	Level	Frame size(mm)	Clear opening (mm)	Depth(mm)	Unit weight(kg)
SOLID-048	D400	400*400	300*300	75	20
SOLID-049	D400	500*500	400*400	100	29
SOLID-050	D400	550*550	450*450	100	37
SOLID-051	D400	600*600	500*500	100	42
SOLID-052	D400	700*700	600*600	100	58
SOLID-053	D400	800*800	700*700	100	77
SOLID-054	D400	900*900	800*800	100	99
SOLID-055	D400	1000*1000	900*900	100	149
SOLID-056	D400	1100*1100	1000*1000	100	180

## Manhole Cover Series

- \*Ductile iron
- \*Turning lock system
- \*With double hinge
- \*Closed key hole
- \*Different decorative pattern is available



Item Code	Level	Frame size(mm)	Clear opening (mm)	Depth(mm)	Unit weight(kg)
SOLID-057	D400	920*900	700*700	75	98

- \*Ductile iron
- \*3 bolts lock
- \*Without hinge
- \*Closed key hole
- \*Different decorative pattern is available



Item Code	Level	Frame size(mm)	Clear opening (mm)	Depth(mm)	Unit weight(kg)
SOLID-058	D400	850	600	100	65

- \*Ductile iron
- \*Double triangular
- \*Closed key hole

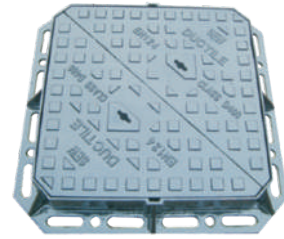


Item Code	Level	Frame size(mm)	Clear opening (mm)	Depth(mm)	Unit weight(kg)
SOLID-059	D400	800*800	600*600	100	78



## Manhole Cover Series

- \*Ductile iron
- \*Double triangular
- \*Closed key hole



Item Code	Level	Frame size(mm)	Clear opening (mm)	Depth(mm)	Unit weight(kg)
SOLID-060	D400	750*750	600*600	100	84

- \*Ductile iron
- \*Turning lock
- \*With hinge and gasket
- \*Closed key hole
- \*Different decorative pattern is available



Item Code	Level	Frame size(mm)	Clear opening (mm)	Depth(mm)	Unit weight(kg)
SOLID-061	D400	950	800	100	95
SOLID-062	D400	1150	1000	100	210

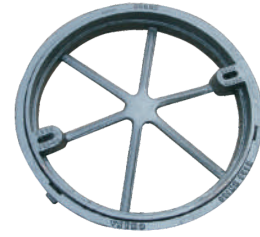
- \*Ductile iron
- \*Lock (available)
- \*With hinge and gasket



Item Code	Level	Frame size(mm)	Clear opening (mm)	Depth(mm)	Unit weight(kg)
SOLID-063	F900	1150	700	250	295

## Manhole Cover Series

- \*Ductile iron
- \*Concrete manhole cover
- \*Two lifting key holes



Item Code	Level	Frame size(mm)	Clear opening (mm)	Depth(mm)	Unit weight(kg)
SOLID-064	B125	570	500	50	15

- \*Ductile iron
- \*Concrete manhole cover
- \*Two lifting key holes



Item Code	Level	Frame size(mm)	Clear opening (mm)	Depth(mm)	Unit weight(kg)
SOLID-065	C250	670	600	70	34
SOLID-066	C250	560	500	50	21
SOLID-067	C250	446	400	50	18

- \*Ductile iron floating manhole cover
- \*Spring lock
- \*With hinge and gasket
- \*Closed key hole
- \*Different decorative pattern is available

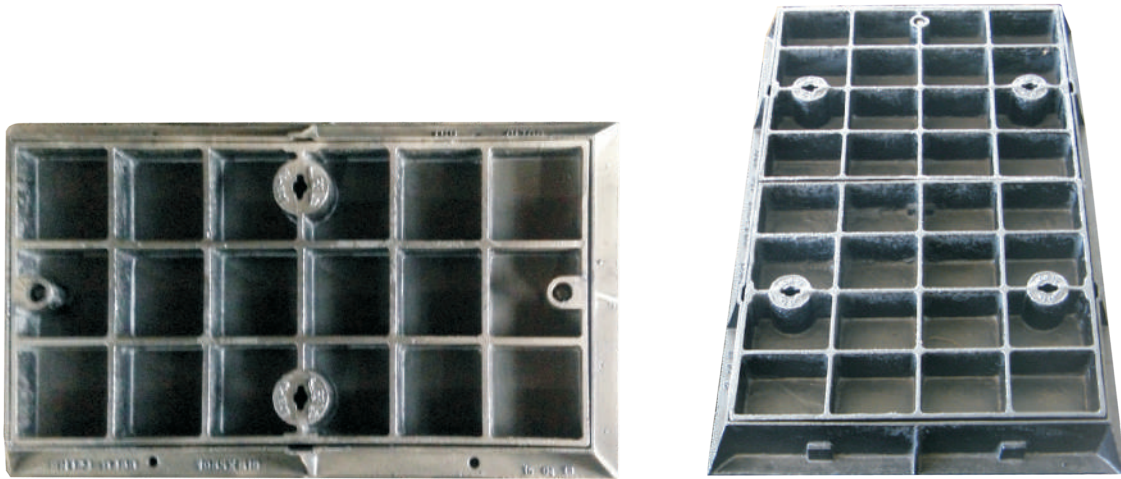


Item Code	Level	Frame size(mm)	Clear opening (mm)	Depth(mm)	Unit weight(kg)
SOLID-068	D400	850	577	190	85

# Manhole Cover Series

\*Ductile iron

\*With lock and safty grid

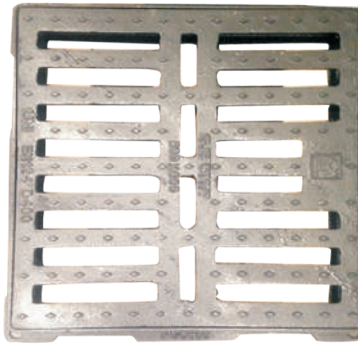


Item Code	Level	Frame size(mm)	Clear opening (mm)	Depth(mm)	Unit weight(kg)
SOLID-069	D400	1065*610	915*460	80	88
SOLID-070	D400	1380*860	1200*680	125	206
SOLID-071	D400	2010*860	1830*680	125	326

# Gully Grating Series

\*Ductile iron

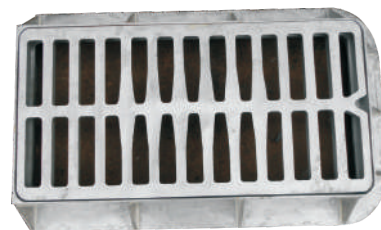
\*Grating with frame



Item Code	Level	Frame size(mm)	Clear opening (mm)	Depth(mm)	Unit weight(kg)
SOLID-072	C250	300*300	170*170	45	9
SOLID-073	C250	400*400	270*270	45	15
SOLID-074	C250	500*500	370*370	50	23
SOLID-075	C250	550*550	420*420	50	27
SOLID-076	C250	600*600	470*470	55	31
SOLID-077	C250	700*700	570*570	60	48
SOLID-078	D400	500*500	370*370	80	32
SOLID-079	D400	550*550	420*420	80	38
SOLID-080	D400	600*600	500*500	80	48
SOLID-081	D400	700*700	570*570	80	58

\*Ductile iron

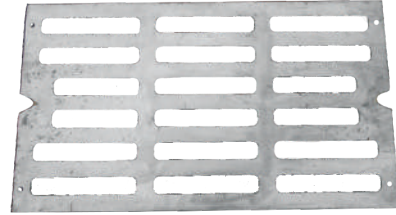
\*Grating with frame



Item Code	Level	Frame size(mm)	Clear opening (mm)	Depth(mm)	Unit weight(kg)
SOLID-082	C250	915*570	800*400	120	68

# Gully Grating Series

- \*Ductile iron
- \*Grating without frame



Item Code	Level	Frame size(mm)	Clear opening (mm)	Depth(mm)	Unit weight(kg)
SOLID-083	C250		660*380	45	28

- \*Ductile iron
- \*Grating with frame



Item Code	Level	Frame size(mm)	Clear opening (mm)	Depth(mm)	Unit weight(kg)
SOLID-084	C250	900*410	785*305	75	42
SOLID-085	D400	900*450	785*305	100	51

- \*Ductile iron
- \*Grating with frame



Item Code	Level	Frame size(mm)	Clear opening (mm)	Depth(mm)	Unit weight(kg)
SOLID-086	D400	1090*510	1000*420	75	65

## Gully Grating Series

- \*Ductile iron
- \*Grating with frame



Item Code	Level	Frame size(mm)	Clear opening (mm)	Depth(mm)	Unit weight(kg)
SOLID-087	C250	720	600	80	42
SOLID-088	C250	620	500	80	34

- \*Ductile iron concave grating
- \*Grating with frame
- \*Double hinge



Item Code	Level	Frame size(mm)	Clear opening (mm)	Depth(mm)	Unit weight(kg)
SOLID-089	D400	940*940	760*760	75	80
SOLID-090	D400	830*830	670*670	70	70

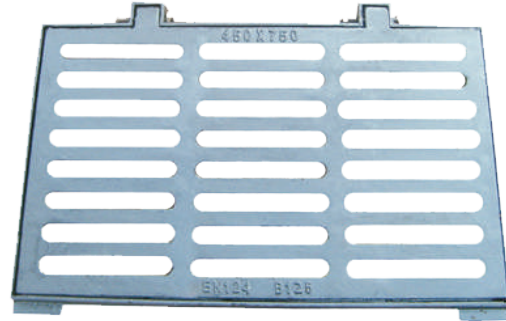
- \*Ductile iron concave grating
- \*Grating with channel



Item Code	Level	Frame size(mm)	Clear opening (mm)	Depth(mm)	Unit weight(kg)
SOLID-091	D400	755*140	750*105	130	19
SOLID-092	D400	755*190	750*155	170	25
SOLID-093	D400	765*295	750*245	220	43

# Gully Grating Series

- \*Ductile iron
- \*Grating with frame



Item Code	Level	Frame size(mm)	Clear opening (mm)	Depth(mm)	Unit weight(kg)
SOLID-094	B125	730*460	685*380	40	20
SOLID-095	B125	785*515	735*435	40	26.5
SOLID-096	C250	630*465	580*380	40	23.5
SOLID-097	C250	785*515	735*435	40	32.5
SOLID-098	D400	785*515	735*435	50	40

- \*Ductile iron
- \*Continuous gratings
- \*With 4\* bolt locks



Item Code	Level	Frame size(mm)	Clear opening (mm)	Depth(mm)	Unit weight(kg)
SOLID-099	E600	600*500	450*500	100	58

## Surface Box Series

\*Ductile iron  
\*With bolt



Item Code	Frame size(mm)	Clear opening (mm)	Depth(mm)	Unit weight(kg)
SOLID-100	330	235	260	21.5

\*Ductile iron  
\*With bolt



Item Code	Frame size(mm)	Clear opening (mm)	Depth(mm)	Unit weight(kg)
SOLID-101	190	125	200	5.2



## Surface Box Series

\*Ductile iron

\*With bolt



Item Code	Frame size(mm)	Clear opening (mm)	Depth(mm)	Unit weight(kg)
SOLID-102	200	120	115	5

\*Lockable cover with chain



Item Code	Frame size(mm)	Clear opening (mm)	Depth(mm)	Unit weight(kg)
SOLID-103	167	108	108	3.5
SOLID-104	200	90	105	5

## Surface Box Series

\*Lockable cover



Item Code	Frame size(mm)	Clear opening (mm)	Depth(mm)	Unit weight(kg)
SOLID-105	200	100	167	7

\*Double triangular  
\*With chains  
\*2 lifting key holes



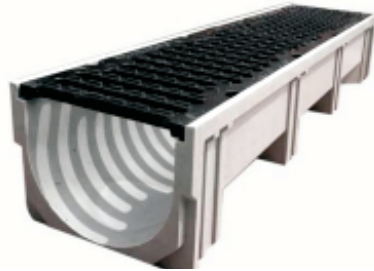
Item Code	Frame size(mm)	Clear opening (mm)	Depth(mm)	Unit weight(kg)
SOLID-106	240*240	150*150	100	9

\*With chains  
\*2 lifting key holes



Item Code	Frame size(mm)	Clear opening (mm)	Depth(mm)	Unit weight(kg)
SOLID-107	500*350	380*230	100	24

# SMC Channel With Ductile Iron Grating



Size	Inside Width(mm)	Total Width(mm)	Inside Height(mm)	Total Height(mm)
U100-100	100	150	88	100
U100-150			137	150
U100-200			184	200
U100-300			284	300
U150-190	150	195	178	190
U150-250			232	250
U150-300			282	300
U150-350			332	350
U150-400			382	400
U200-190	200	245	177	190
U200-250			232	250
U200-300			282	300
U200-350			332	350
U200-400			382	400
U250-263	250	305	250	263
U250-300			282	300
U250-350			332	350
U250-450			382	400
U250-450			432	450
U300-315	300	365	300	315
U300-380			362	380
U300-430			412	430
U300-480			462	480
U300-530			512	530
U400-500	400	465	470	500
U400-500 (平口)			480	500
U150-200	130	200	180	200
U200-200	180	250	180	200
U250-250	240	300	230	250
U300-300	280	350	280	300



# Manhole Steps



SOLID-108



SOLID-109



SOLID 110



SOLID-111



SOLID-112



SOLID-113



SOLID-114



SOLID-115



SOLID-116



SOLID-117

Item	Over all length L(mm)	over all width W(mm)
SOLID-108	250	240
SOLID-109	277	227
SOLID-110	357	227
SOLID-111	160	205
SOLID-112	150	250
SOLID-113	150	250
SOLID-114	320	240
SOLID-115	300	196
SOLID-116	290	200
SOLID-117	450	300

**Shanxi Solid Industrial Co.,Ltd**

**ADD: 28F, No.8 Changxing South Street,  
Jinyuan District , Taiyuan , Shanxi, China**

**Postcode: 030021**

**TEL1: 0086-351-8390369**

**TEL2: 0086-351-8390336**

**FAX: 0086-351-8390339**

**Mobile: 0086-13834503046**

**Email1: [info@cnsolid.com](mailto:info@cnsolid.com)**

**Email2: [sales@cnsolid.com](mailto:sales@cnsolid.com)**

**Website: <http://www.sxsolid.com.cn>**