

DMG24240F013_03WN

产品特点:

- 基于 T5L0-Q88 芯片，运行 DGUS II 人机交互软件平台。
- 1.28 英寸，240*240 分辨率，IPS 液晶屏。
- COF 结构，智能屏的整个核心电路整合在液晶模组 FPC 上，适合结构要求轻、薄，成本要求苛刻，生产简单的应用。

Features:

- Based on T5L0-Q88, running DGUS II HMI platform.
- 1.28-inch, 240*240 resolution, IPS-TFT LCD.
- COF structure. The entire core circuit of the smart screen is fixed on the FPC of LCM, featured by light and thin structure, low cost and easy production.



1、外部接口 External Interface

序号 NO.	定义 Definition	类型 Type	功能描述 Functional Description
1	VCC	P	电源输入 Power input
2	TX	O	串口输出 UART DOUT
3	RX	I	串口输入 UART DIN
4	GND	P	公共地 GND

2、规格参数 Specification Parameters

2.1 产品参数 Product Parameters

主控芯片 Main Chip	T5L0-Q88
用户接口 User Interface	4Pin_1.0mm FPC
FLASH	16MB
UI 版本 UI Version	DGUS II/ TA
供电方式 Power Supply	10PIN_4PINZJB 转接板供电 10PIN_4PINZJB adapter board power supply
尺寸 Dimensions	1.28 英寸 1.28-inch
分辨率 Resolution	240*240
有效显示区域 Active Area (AA)	直径=32.40mm Diameter=32.40mm
可视区域 Viewing Area (VA)	直径=33.00mm Diameter=33.00mm
视角 Viewing Angle	视角宽（典型值是 85°/85°/85°/85°），对比度高、色彩还原好。 Wide viewing angle (85°/85°/85°/85° typical), high contrast, and good color reproduction.
背光寿命 Backlight Service Life	>20000 小时 >20000 hours
亮度 Brightness	350nit
亮度调节 Brightness Control	100 级亮度调节（当亮度调节至最高亮度的 1%~30%时，可能出现闪烁现象，不建议在此范围使用） 0~100 grade (When the brightness is adjusted to 1%~30% of the maximum brightness, flickering may occur and is not recommended to use in this range)
注：长时间显示固定画面可能导致残影现象，建议设置动态屏保进行规避。 Note: Use dynamic screen saver to prevent afterimages from prolonged fixed page display.	

2.2 串口参数 Interface Parameters

参数 Item	测试条件 Conditions	最小值 Min	典型值 Typ	最大值 Max	单位 Unit
串口波特率 Baud rate	用户自定义（硬件配置文件设置） User Set(Configure the CFG file)	3150	115200	3225600	bps
串口输出电平 Output Voltage(TXD)	Output 1	3.0	3.3	-	V
	Output 0	-	0	0.3	V
串口输入电平 Input Voltage(RXD)	Input 1	-	-	3.3	V
	Input 0	0	-	0.5	V
串口模式 Interface	UART2: TTL				
数据格式 Data Format	UART2: N81				

2.3 电气规格 Electrical specifications

额定功率 Rated Power	<2W	
工作电压 Operating Voltage	4.5~5.5V, 典型值 5V。 4.5~5.5V, typical value of 5V.	
工作电流 Operating Current	75mA	VCC=5V, 背光亮度最大。 VCC=5V, max backlight.
	40mA	VCC=5V, 背光关闭。 VCC=5V, backlight off.
推荐工作电源: 5V 1A 的直流稳压电源。 Recommended power supply: 5V 1A DC.		

2.4 工作环境 Operating Environment

工作温度 Operating Temperature	-10℃~60℃ (5V @ 60% RH)
存储温度 Storage Temperature	-20℃~70℃
工作湿度 Operating Humidity	10%~90%RH, 典型值 60%RH。 10%~90%RH, typical value of 60% RH.

3、可靠性测试 Reliability Test

智能屏产品在量产前需根据实际应用需求及产品规格管控标准进行系列流程化可靠性检测，确保产品质量。

Before mass production of smart screens, a series of procedural reliability tests need to be conducted according to actual application requirements and product specification control standards to ensure product quality.

3.1 静电放电 ESD 测试 ESD Test

测试环境温度：25°C，测试环境湿度：50%RH。

Test temperature: 25°C. Test humidity: 50%RH.

测试过程：将产品放置在测试台面的测试工装上（测试工装高度约 15cm），针对智能屏进行接触放电和空气放电测试，实验过程观察屏幕有无死机、黑屏、白屏、花屏、重启等异常现象。

Test process: Place the product on the test bench fixture (approximately 15cm in height), and perform contact and air discharge tests on the smart LCM. Observe if any freezing, black or white screen, flickering, or rebooting occurs during the test.

测试结论：产品 ESD 性能达到 GB/T 17626.2 B 级。

Test conclusion: The product's ESD performance meets GB/T 17626.2 Class B standards

■ Test standard : EN 61000-4-2:2009 IEC 61000-4-2:2008 GB/T 17626.2-2018
 Other:

Table 1: Electrostatic Discharge Immunity (Air Discharge)

Test Points Locations	Test Levels							
	-2kV	+2kV	-4kV	+4kV	-8kV	+8kV	-15kV	+15kV
屏幕					A	A		
/	/	/	/	/	/	/	/	/
/	/	/	/	/	/	/	/	/

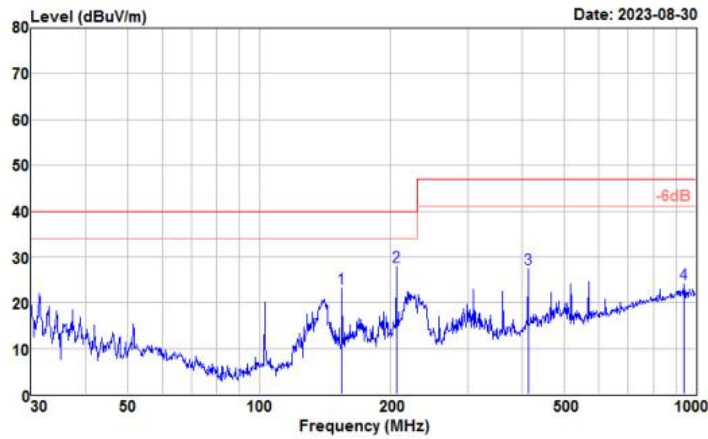
Table 2: Electrostatic Discharge Immunity (Direct Contact)

Test Points Locations	Test Levels							
	-2kV	+2kV	-4kV	+4kV	-6kV	+6kV	-8kV	+8kV
边框 Jo	/	/	/	/	/	/	/	/
/	/	/	/	/	/	/	/	/
/	/	/	/	/	/	/	/	/

3.2 辐射干扰测试 RE test

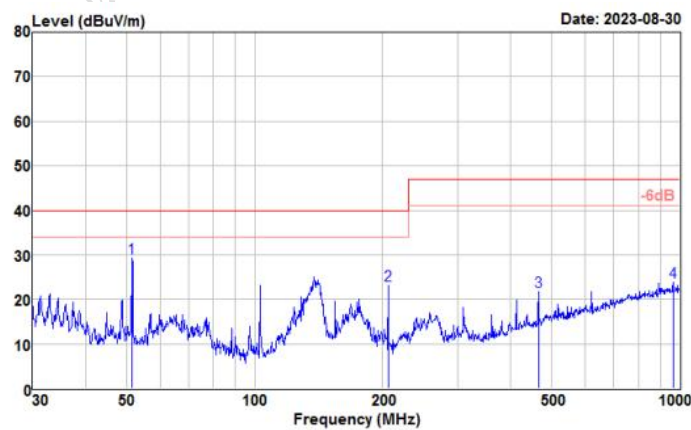
测试项目 Test Item	测试标准 Test Standard	结果 Result
辐射干扰 RE	Class B	正常工作 Normal operation

HORIZONTAL



频率 (MHz)	准峰值 (dBuV/m)	限值 (dBuV/m)	裕量 (dB)	天线高度 (cm)	转台角度 (deg)	天线极性
154.821	23.14	40.00	16.86	200	360	HORIZONTAL
206.398	27.86	40.00	12.14	200	360	HORIZONTAL
413.271	27.49	47.00	19.51	200	360	HORIZONTAL
938.833	24.07	47.00	22.93	200	360	HORIZONTAL

VERTICAL



频率 (MHz)	准峰值 (dBuV/m)	限值 (dBuV/m)	裕量 (dB)	天线高度 (cm)	转台角度 (deg)	天线极性
51.481	29.24	40.00	10.76	200	360	VERTICAL
206.398	23.18	40.00	16.82	200	360	VERTICAL
465.599	21.63	47.00	25.37	200	360	VERTICAL
965.542	23.77	47.00	23.23	200	360	VERTICAL

4、调试示例 Debug Demo

建议首次使用我司智能屏的用户购买测试套件。详细信息可联系客服人员。

It is recommended for new users of our smart LCMs to purchase official accessories. For more details, please refer to customer service center.

转接板型号：10PIN_4PINZJB

Adapter board model: 10PIN_4PINZJB



调试步骤：打开串口助手—自定义功能指令—设置指令—发送。

Operation steps: open serial assistant - custom function command - set command - send.

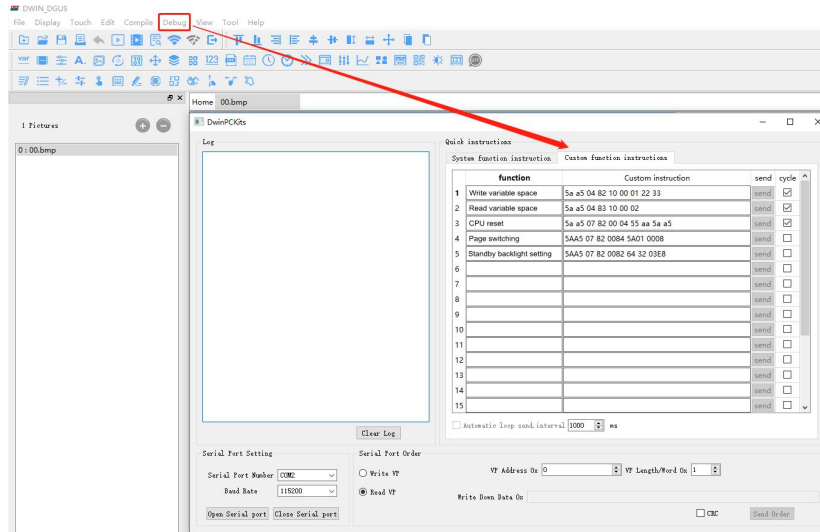
功能示例 For example:

(1) 调试切页 Page switching

Tx: 5AA5 07 82 0084 5A01 0008

(2) 待机设置 Standby backlight setting

Tx: 5AA5 07 82 0082 64 32 03E8



DGUS 操作图

DGUS operation

5、T5L0-Q88 主控芯片 T5L0-Q88 ASIC

T5L0-Q88ASIC 是迪文科技针对小尺寸液晶应用显示而设计的小封装、低功耗、低成本、GUI 和应用高度整合的单芯片双核 ASIC，2023 年正式量产。

T5L0-Q88 ASIC is a small package, low-power, cost-effective, GUI and application highly integrated single-chip dual-core ASIC designed by DWIN Technology for small-size LCD and mass produced in 2023.

- (1) 采用应用最广泛、成熟和稳定的 8051 核，1T（单指令周期）高速工作，最高主频 400MHz。

Mature and stable 8051 core which is the most widely used with the maximum operating frequency of T5L is up to 400MHz, 1T(single instruction cycle)high speed operation.

- (2) 单独 CPU 核（GUI CPU）运行 DGUS II 系统：

Separate GUI CPU core running DGUS II System:

- 内置高速显存，2.4GB/S 带宽，18bit 彩色显示分辨率支持到 1024*768（TA 模式），854*480（DGUS 模式）。
High-speed display memory, 2.4GB/S bandwidth. 18-bit color display resolution support up to 1024*768 (TA mode), 854*480 (DGUS mode).
- 2D 硬件加速，动画和图标为主的 UI 极其炫酷、流畅。
2D hardware acceleration and the UI with animation and icons as its main feature is extremely cool and smooth.
- JPEG 压缩模式存储图片、图标，大幅度缩小外置存储器到低成本的 16Mbytes SPI Flash。
Images and icons stored in JPEG format. Adopt Low-cost 16Mbytes SPI Flash.
- 高品质语音压缩存储和播放。
High quality ratio and sound restoration and playback.
- 128Kbytes 变量存储器空间，存储器接口和 OS CPU 核交换数据，应用简单。
128Kbytes variable storage space for exchanging data with OS CPU Core and memory.
- 2 路 10bit 800KHz DC/DC 控制器，简化 LED 背光、模拟电源设计并节约成本和空间。
2 10-bit 800KHz DC/DC controllers simplify LED backlight, analog power design and save cost and space.
- 支持 PC 端组态开发和仿真，支持后台远程升级。

Support DGUS development and simulation on PC. Support backend remote upgrade.

- (3) 单独 CPU 核（OS CPU）运行用户 8051 代码或迪文 DWIN OS 系统，应用中省掉用户 CPU：

Separate CPU (OS CPU) core runs user 8051 code or DWIN OS system and user CPU is omitted in practical application:

- 标准 8051 架构和指令集，64Kbytes 代码空间，32Kbytes 片内 RAM。
Standard 8051 core and instruction set, 64Kbytes code space, 32Kbytes on-chip RAM.
- 64bit 整数型数学运算单元（MDU），包括 64bit MAC 和 64bit 除法器。

64-bit integer mathematical operation unit (MDU), including 64-bit MAC and 64-bit divider.

- 15 个 IO, 4 路 UARTs, 1 路 CAN 接口, 最多 8 路 12bit A/D, 2 路 16bit 分辨率可调的 PWM。

15 IOs, 4-channel UARTs, 1-channel CAN, up to 8-channel 12-bit A/Ds and 2-channel 16-bit PWM of adjustable resolution.

- 支持 IAP 在线仿真和调试, 断点数量无限制。

Support IAP online simulation and debugging with unlimited breakpoints.

- 可以透过 DGUS 系统在线升级代码。

Upgrade code online through DGUS system.

- (4) 1Mbytes 片内 Flash, 迪文专利加密技术, 确保代码和数据安全, 杜绝山寨和克隆。

1Mbytes on-chip Flash with DWIN patent encryption technology ensure code and data security.

- (5) -40°C~+85°C工作温度范围(可定制-55°C~105°C工作温度范围 IC)。

Operating temperature ranges from -40°C to +85°C(IC operating temperature customizable from -55°C to 105°C).

迪文欢迎广大用户基于 T5L 自主设计客制化产品。

DWIN encourages users to design your own customized product based on T5L.

6、包装和物理尺寸 Packing Capacity & Dimension

尺寸 Dimension				
外形尺寸 Dimension	35.60(W) × 145.40(H) × 1.60(T) mm			
净重量 Net Weight	7g			
包装标准 Packing Capacity				
包装箱型号 Model	包装箱尺寸 Size	层数(层) Layer	数量/层(片) Quantity/Layer	总数量(片) Quantity(Pcs)
纸箱 Carton	450mm(L)×385mm(W)×205mm(H)	-	-	100

7、修订记录 Revision records

版本 Rev	日期 Date	描述 Content	编辑人 Editor
00	2024-04-22	首次发布 First Edition	李精精
01	2024-10-29	更新实物图 Update the physical drawing	李精精
02	2025-09-05	补充转接板型号 Add adapter model	赵方维

使用本文档或迪文产品过程中如存在任何疑问，或欲了解更多迪文产品最新信息，请及时与我们联系：

Please contact us if you have any questions about the use of this document or our products, or if you would like to know the latest information about our products:

客服电话 Customer service Tel: 400 018 9008

客服 QQ Customer service QQ: 400 018 9008



企业微信 WeCom:

客服邮箱 Customer service email: dwinhmi@dwin.com.cn

迪文开发者论坛 DWIN Developer Forum: <http://inforum.dwin.com.cn:20080/forum.php>

感谢大家一直以来对迪文的支持，您的支持是我们进步的动力！

Thank you all for continuous support of DWIN, and your approval is the driving force of our progress!

重要声明

Important Disclaimer

迪文有权进行产品设计的任何改善或变更，且不另行单独通知客户。

客户应自行确保在产品应用过程中严格遵循所有相关标准及其他要求，包括但不限于功能安全、信息安全及监管等方面的规定。

对于客户在其产品中采用迪文产品可能引发的任何后果，迪文不承担连带责任。特别地，对于可能导致的重大财产损失、环境危害、人身伤害甚至死亡等风险，尤其是在军事、易燃易爆、生命医疗设备等高风险应用领域，客户应自行评估风险，并采取相应的预防和保护措施，迪文不承担相关责任。

DWIN reserves the right to make any changes to product designs without prior notice.

Customers should ensure strictly adhering to all the relevant standards and requirements during the product application process, including but not limited to functional safety, information security, and regulatory provisions. DWIN shall not bear any joint and several liability for any consequences that may arise from customers' adoption of DWIN products. In particular, for risks that may lead to significant property losses, environmental hazards, personal injury, or even death, especially in high-risk application areas such as military applications, flammable and explosive places, and life-saving medical equipment, customers should independently assess the risks and take corresponding preventive and protective measures. DWIN shall not bear any relevant responsibility.