

72W AC-DC Medical-grade Desktop Power Adapter ADA720K240S001B



1 Features

- Wide input voltage: the input working voltage range is 100-240VAC.
- Low power consumption: No-load <math><0.2\text{W}</math>.
- High energy efficiency: Six levels of energy consumption, power efficiency up to 89%.
- High reliability: Compliant with EN60601-1, IEC CLASS II and 2xMOPP insulation protection level, CE.
- Flame retardant insulation: UL94V-0 flame retardant heat resistant material.
- Full protections: Short Circuit/ Over Voltage/ Over Current/ Self-recovery.

2 Applications

- Blood glucose meter
- Blood oxygen meter
- COVID-19 PCR test machine
- Household beauty device
- Physiotherapy equipment

3 Description

ADA720K240S001B is a desktop power adapter with a single output. With 100 -240 VAC universal input voltage, it can continuously output any DC voltage of 24VDC, 1M output cable length. Widely used in portable medical equipment .

Table of Contents

| | | |
|----------|------------------------------------|----------|
| 1 | FEATURES | 1 |
| 2 | APPLICATIONS | 1 |
| 3 | DESCRIPTION | 1 |
| 4 | NAMING CONVENTION | 3 |
| 5 | SPECIFICATION | 3 |
| 5.1 | INPUT PARAMETER | 3 |
| 5.2 | OUTPUT PARAMETER | 4 |
| 5.3 | ENVIRONMENT | 4 |
| 5.4 | PROTECTION FUNCTION | 4 |
| 5.5 | RELIABILITY | 4 |
| 5.6 | SAFETY STANDARDS / DIRECTIVES | 5 |
| 5.7 | EMC | 5 |
| 6 | TYPICAL APPLICATION CIRCUIT | 5 |
| 7 | MECHANICAL SPECIFICATION | 6 |
| 8 | PRECAUTIONS FOR USE | 8 |
| 9 | REVISION HISTORY | 8 |
| | IMPORTANT DISCLAIMER | 8 |

4 Naming Convention

ADA720K240S001B: Output Voltage 24V, Output Power 72W, medical desktop power adapter AC / DC

| | | |
|-----|---------------------------|--|
| □□ | Product Code | AD=Isolated AC/DC; DD=Isolated DC/DC |
| □ | Packaging Form | A=adapter; M=resin filled power module; P=PCB module |
| XXX | Power Coding | First two digits multiplied by 10 to the power of the third digit |
| □ | Application Level | C=commercial grade T=industrial grade K=medical grade S=harsh environment application |
| XXX | Output Voltage | *10 ⁻¹ V |
| □ | Custom tag | S=standard product Z=customized product |
| XXX | Product ID | 001-999, used to identify different products of the same category |
| □ | Major Upgrade Information | A-Z, fixed as A for the first mass production |

5 Specification

5.1 Input Parameter

| | |
|------------------------|------------------------------|
| Voltage Range | 110~240 VAC 113~370 VDC |
| Frequency Range | 50~60Hz |
| Input Current (Max.) | 1.5A @ 115VAC, 0.6A @ 230VAC |
| Efficiency (Typ.) | 89% |
| Standby Consumption | 0.2W |
| Impulse Current (Typ.) | 6.6A @ 115VAC, 5A @ 230VAC |
| Leakage Current (Typ.) | 100uA RMS @ 264VAC/60Hz |

5.2 Output Parameter

| | |
|---------------------|-----------------------------------|
| Output Voltage | 24VDC |
| Voltage Tolerance | ±5% |
| Output Current | 3000mA |
| Rated Power (Max.) | 72W |
| Line Regulation | ±1% at full load |
| Load Regulation | ±3% |
| Ripple & Noise | 132mV (Typ.), 170mV (Max.)@20MHz |
| Frequency (Typ.) | 65kHz |
| Hold up Time (Typ.) | 0.65mS @ 115VAC 0.7mS @ 230VAC |

5.3 Environment

| | |
|-----------------------|--|
| Operating Temperature | -10 ~ +50°C |
| Storage Temperature | -20 ~ +85°C |
| Storage Humidity | 10% ~ 95%RH |
| Soldering Temperature | 260±5°C @ Wave Soldering, 5~10s 360±10°C @ Manual Soldering, 3-5s |

5.4 Protection Function

| | |
|---------------------------|---|
| Short Circuit | Long term short circuit, auto recovery. |
| Over Current | ≥140%IO auto recovery |
| Over Voltage | ≤24.4VDC @ 24V output |
| IEC Safety Class | CLASSII |
| Electric Shock Protection | 2×MOPP @ primary to secondary |

5.5 Reliability

| | |
|------|-----------------|
| MTBF | ≥30,000H @ 25°C |
|------|-----------------|

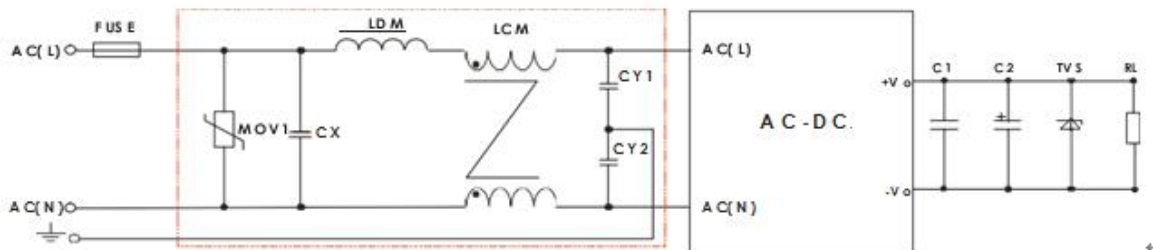
5.6 Safety Standards / Directives

| | |
|--------------------------|--|
| Medical Safety | EN60601-1 |
| CE | Compliant |
| Isolation Voltage (Min.) | Input to Output |
| | 3750VAC @ 1 minute test and the leakage current is smaller than 5mA. |

5.7 EMC

| Parameter | Standard | Test Level / Note |
|---------------------------------|-------------------------------------|---------------------------|
| Conducted Emission | EN55011(CISPR11) / EN55032(CISPR32) | CLASS B |
| Radiated Emission | EN55011(CISPR11) / EN55032(CISPR32) | CLASS B |
| Electrostatic Discharge | IEC 61000-4-2:2008 | ±8KV/Contact ±15KV/Air |
| Radiate Susceptibility | IEC 61000-4-3:2006+A1:2007+A2:2010 | 10V/m |
| Electrical Fast Transient Burst | IEC 61000-4-4:2012 | ±2 KV |
| Surge | IEC 61000-4-5:2014+A1:2017 | ±1KV (line to line) |
| Conducted Susceptibility | IEC 61000-4-6:2013 | 10Vr.m.s |
| Voltage Dips and Interruption | IEC 61000-4-11:2004+A1:2017 | 0%, 70% |

6 Typical Application Circuit



Note: EMC has higher requirements without any additional circuit.

7 Mechanical Specification

| | |
|-------------------------------|--|
| Dimension | 133.00(L)*58.00(W)*30.30(H)mm |
| Enclosure Material | Black flame retardant and heat resistant plastics(UL94V-0) |
| Cooling Mode | Natural air cooling |
| Power and Cable Specification | ul2464×20Awg*1m,5.5*2.5*straight head+magnetic ring+SR |



SWITCHING POWER ADAPTER

AC/DC MEDICAL ADAPTOR (电源适配器)
 MODEL NO.(型号): ADA720K240S001B
 INPUT(输入): 100-240V 50/60Hz 1.5A-0.6A
 OUTPUT(输出): DC 24V 3000mA MAX: 72W

Beijing DWIN Technology Co., LTD
 Beijing Headquarters: 18th Floor, Building 5, National Defense Science and Technology Park, Beijing Institute of Technology, Haidian District, Beijing
 Production base: DWIN Hunan Science and Technology Park, No. 8 Chuangye Avenue, Zhangjiang Pioneer Park, Taoyuan County, Hunan Province
[http:// www.dwin.com.cn](http://www.dwin.com.cn)
 北京迪文科技有限公司
 生产基地: 湖南省桃源县漳江创业园创业大道8号迪文湖南科技园

⚠ CAUTION (警告) ⚠
DO NOT OPEN RISK OF ELECTRIC SHOCK
 Offnen Sie nlemals das Gerat.Das Gerat dart aus Grüden der elektrischen Sicherheit nur von autorislertem Servicepersonal geoffnet warden
 (为避免电击危险请勿随意拆开本产品)
ATTENTION:
RISQUE DE CHOC ELECTRIOUE NE PAS OUVRIR

MADE IN CHINA(中国制造)

Model No.

Input Voltage(V) / Frequency / Current(mA)

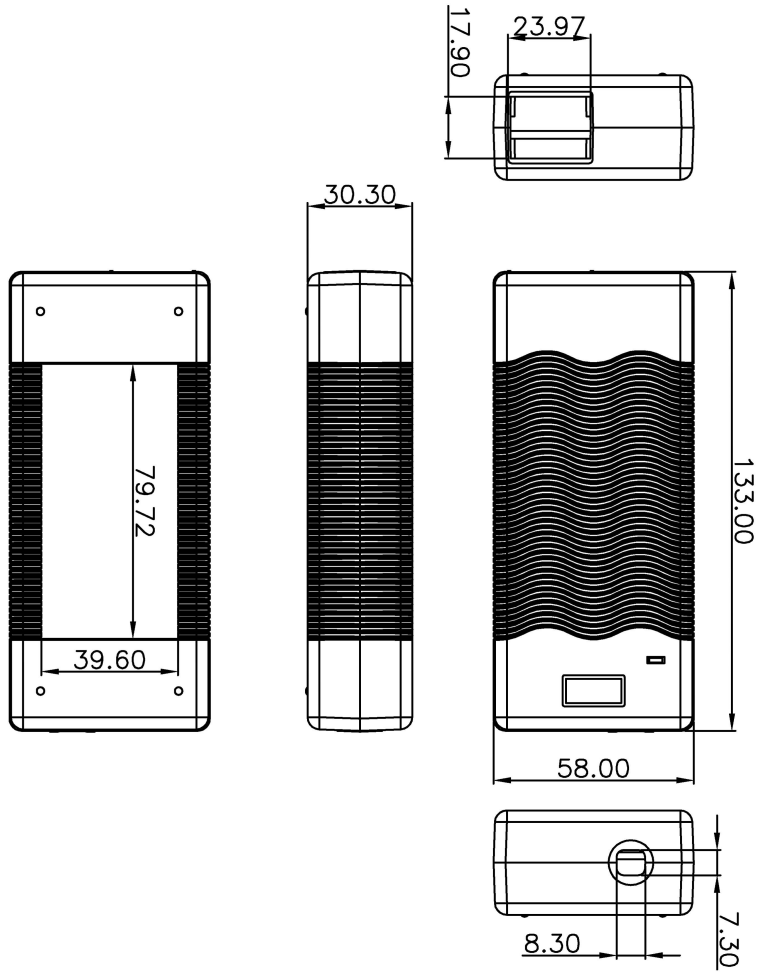
Output Voltage(V) / Current(mA) / Max Power

EU Certification: CE

Six Levels of Energy Efficiency



Compliant with RoHS standards



| | | | |
|---|---|---|---|
| THIRD ANGLE PROJECTION | DIMENSIONAL TOLERANCES | | |
| | (V) | () | () |
| 0-100 0.15 100-200 0.20 200-400 0.25 400-600 0.30 600-800 0.35 800-1000 0.40 | 0-100 0.15 100-200 0.20 200-400 0.25 400-600 0.30 600-800 0.35 800-1000 0.40 | 0-100 0.15 100-200 0.20 200-400 0.25 400-600 0.30 600-800 0.35 800-1000 0.40 | 0-100 0.15 100-200 0.20 200-400 0.25 400-600 0.30 600-800 0.35 800-1000 0.40 |

| | | | | |
|-----------------------|-----------------|-----------------|-----------|------------|
| MODEL NO.: | ADA720K240S001B | DWIN Technology | SHEET: OF | REV: 01 |
| R&D | PE | ME | DATE | 2024-08-12 |
| INTERIOR COUNTERSIGN: | | | | |

8 Precautions for Use

Avoid using the equipment close to or stacked with other equipment, which may lead to improper operation. If it must be used close to or stacked, pay attention to observe and verify the equipment and other equipment to ensure normal operation.

The use of other accessories, sensors and cables provided by the equipment manufacturer may increase the electromagnetic radiation or reduce the immunity.

The distance between the portable radio frequency communication equipment and the equipment should not be greater than 30cm, otherwise the performance of the equipment may be reduced.

9 Revision History

| Version | Date | Description | Author |
|---------|------------|---------------|--------|
| 00 | 2024-08-19 | First edition | YML |

Disclaimer: The product design is subject to alternation and improvement without prior notice.

Please contact us if you have any questions about the use of this document or our products, or if you would like to know the latest information about our products:

- Customer Service Tel: +86 400 018 9008
- Customer Service Email: dwinhmi@dwin.com.cn
- DWIN Developer Forum: <https://forums.dwin-global.com/>

Thank you all for continuous support of DWIN, and your approval is the driving force of our progress!

Important Disclaimer

DWIN reserves the right to make any changes to product designs without prior notice.

Customers should ensure strictly adhering to all the relevant standards and requirements during the product application process, including but not limited to functional safety, information security, and regulatory provisions.

DWIN shall not bear any joint and several liability for any consequences that may arise from customers' adoption of DWIN products. In particular, for risks that may lead to significant property losses, environmental hazards, personal injury, or even death, especially in high-risk application areas such as military applications, flammable and explosive places, and life-saving medical equipment, customers should independently assess the risks and take corresponding preventive and protective measures. DWIN shall not bear any relevant responsibility.