

# 产品规格书

## Product Specification

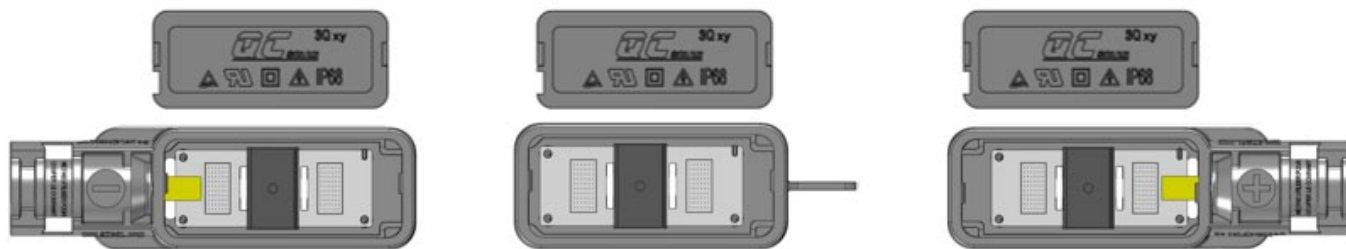


### 3Qxy 无线型接线盒

### 3Qxy Cable free junction box

承认签章 (Confirmation)					
快可承认 (QC Solar confirmation)			客户承认 (Customer confirmation)		
批准 Approved by	审核 Audited by	设计 Designed by	采购 Purchased by	品保 Quality Assured by	技术 Technical verified by

## 1. 产品外观及设计性能参数 / Product appearance and technical parameters



## 技术参数 Product Specifications

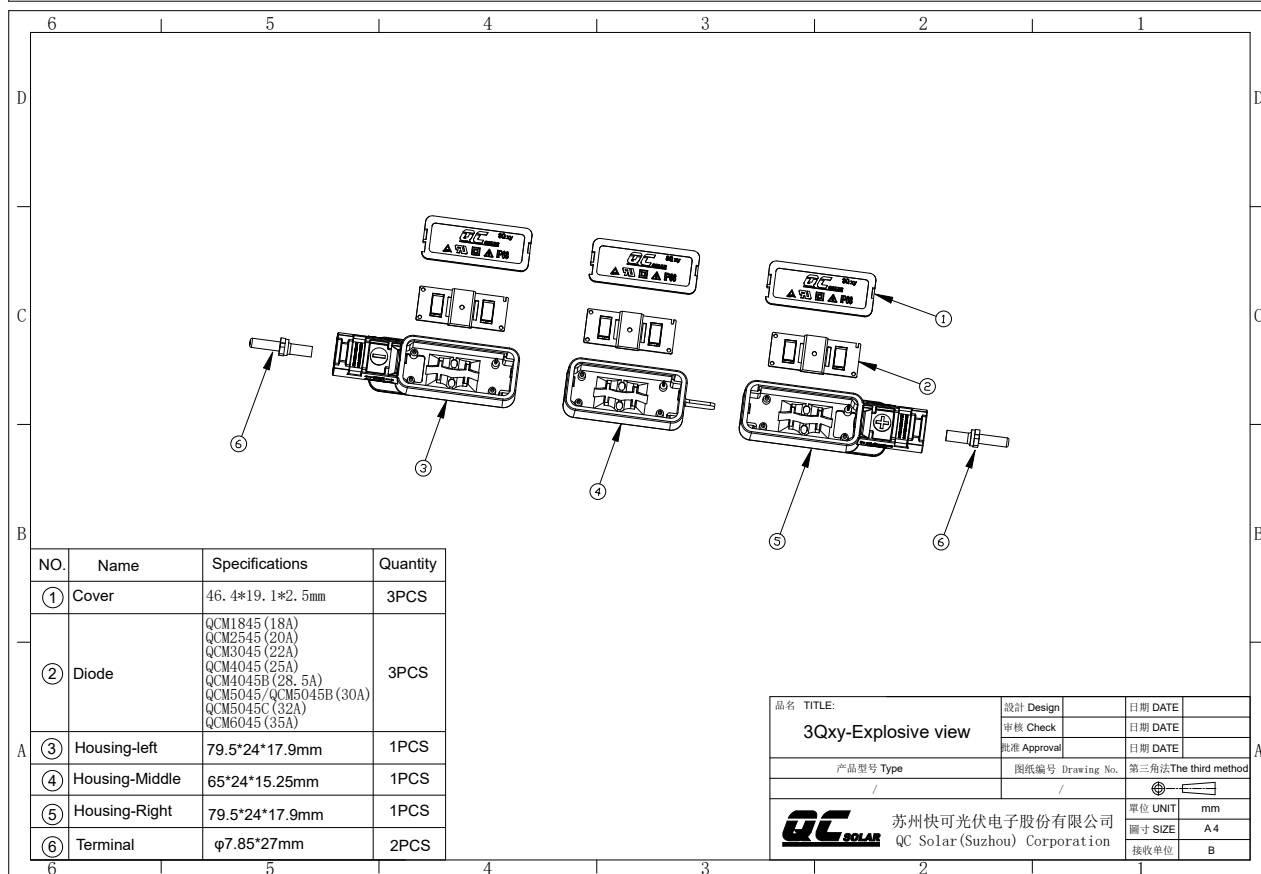
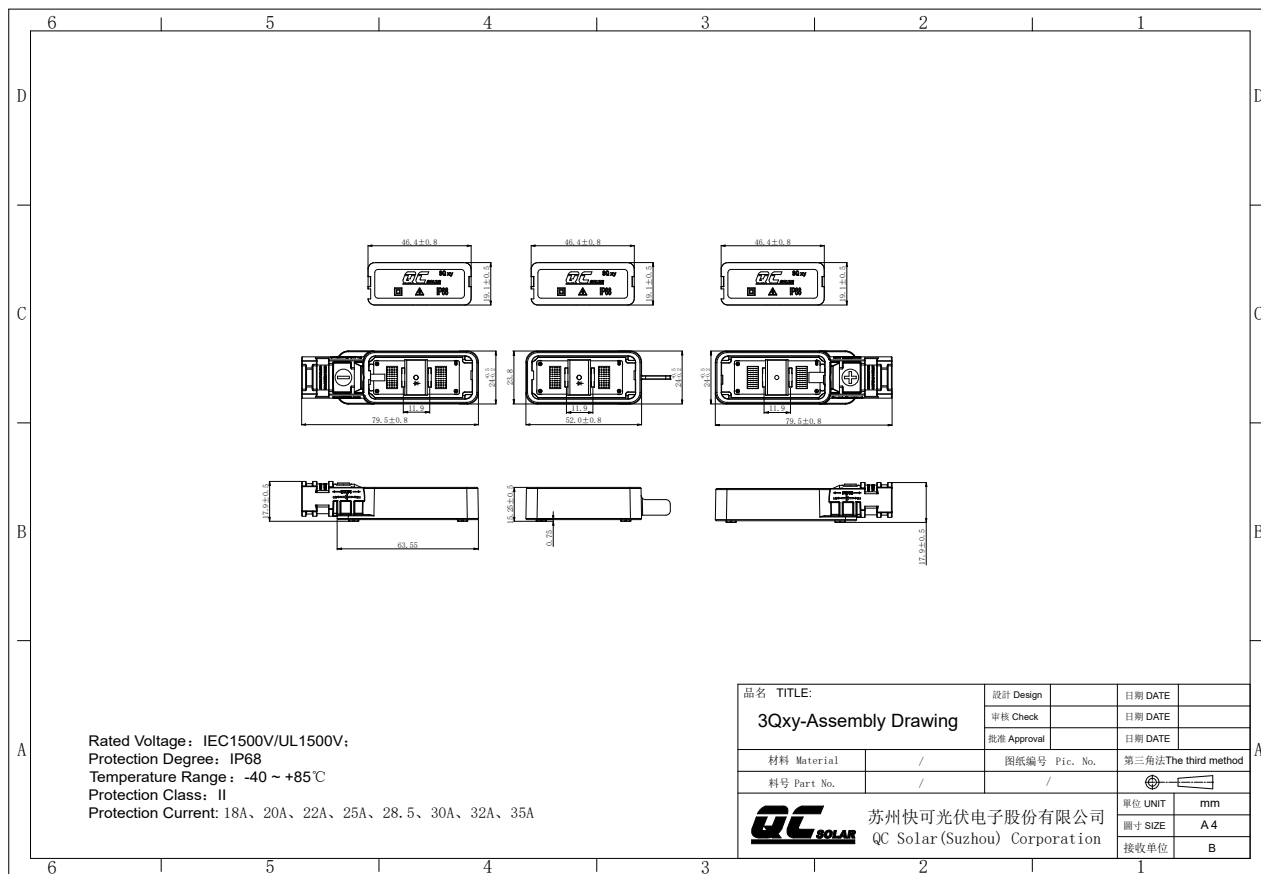
额定电压 Rated Voltage	IEC 1500V/UL1500V
额定电流 Rated Current	18A/20A/22A/25A/28.5A/30A/32A/35A
灌胶量 Glue Volume	3*6.3mL(approx.)
应用等级 Application Class	Class A
温度范围 Temperature Range	-40°C ~ +85°C
防护等级 Protection Degree	IP68
汇流带尺寸 Size of Ribbons	Max.8mm
TUV 证书编号 TUV Certificate NO.	R50510013
南德证书编号 TUV Certificate NO.	No.B 077362 0009 Rev.03
U L 证书编号 UL Certificate NO	E312223
防火等级 Flame Class	5VA

## 2. 接线盒BOM清单 / BOM list of junction box

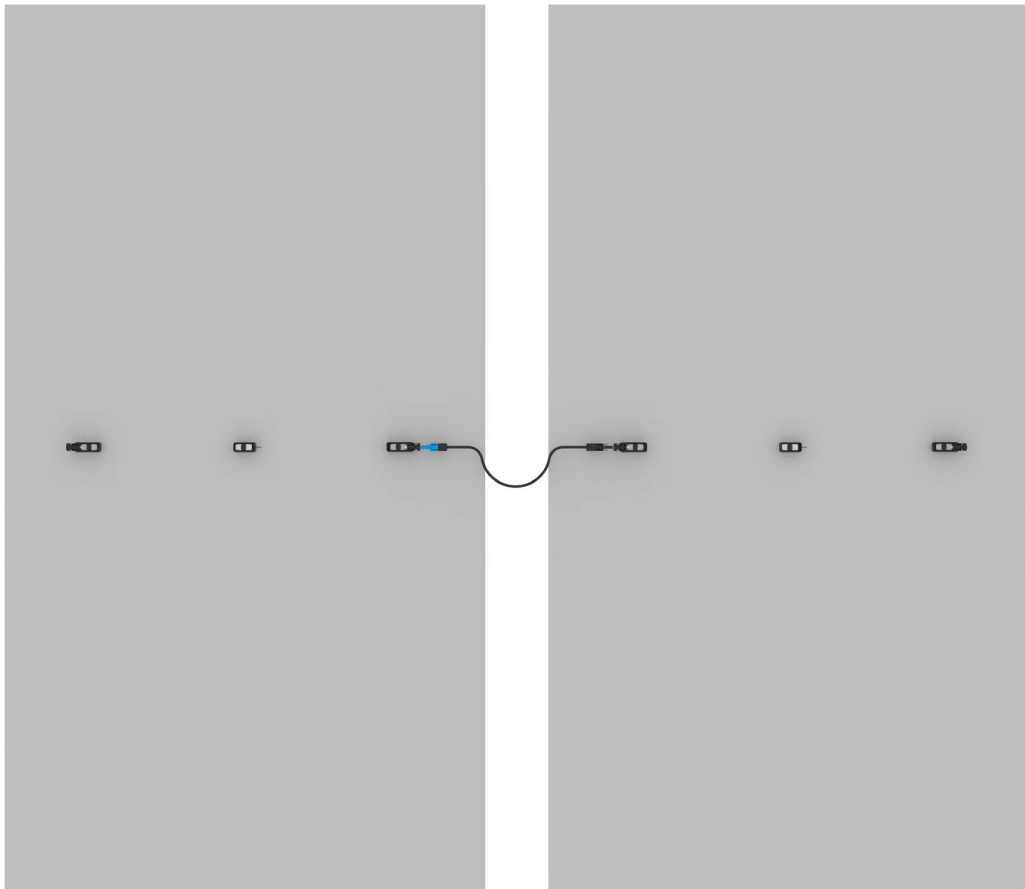
苏州快可光伏电子股份有限公司					
产品名称 Product Name	接线盒 PV JUNCTION BOX	材料清单 Bill Of Materials		版本 Version	A/0
产品型号 Model	3Qxy (无线缆接线盒)			张数 Page	1
客户 Customer	/			日期 Issuing date	2022.04.13
序号 S/N	名称 Description	材质 Material	规格 Specification	数量 Quantity	备注 Notes
1	上盖 Cover	PP0	46.4*19.1*2.5mm	3 pcs	
2	底座 -L Housing-Left	PP0	79.5*24*17.9mm	1 pcs	
3	底座 -M Housing-Middle	PP0	65*24*15.25mm	1 pcs	
4	底座 -R Housing-Right	PP0	79.5*24*17.9mm	1 pcs	
5	端子 Terminal	Cu	Φ7.85*27mm	2 sets	
6	二极管 Diode	/	QCM1845(18A) QCM2545(20A) QCM3045(22A) QCM4045(25A) QCM4045B(28.5A) QCM5045B/ QCM5045(30A) QCM5045C(32A) QCM6045(35A)	3 pcs	
以上原料符合欧盟 ROHS 要求 All the materials above are subject to RoHS requirement.					
制表: Written By:		审核: Reviewed By:		批准: Approved By:	

### 3. 接线盒图档 / Drawing of junction box

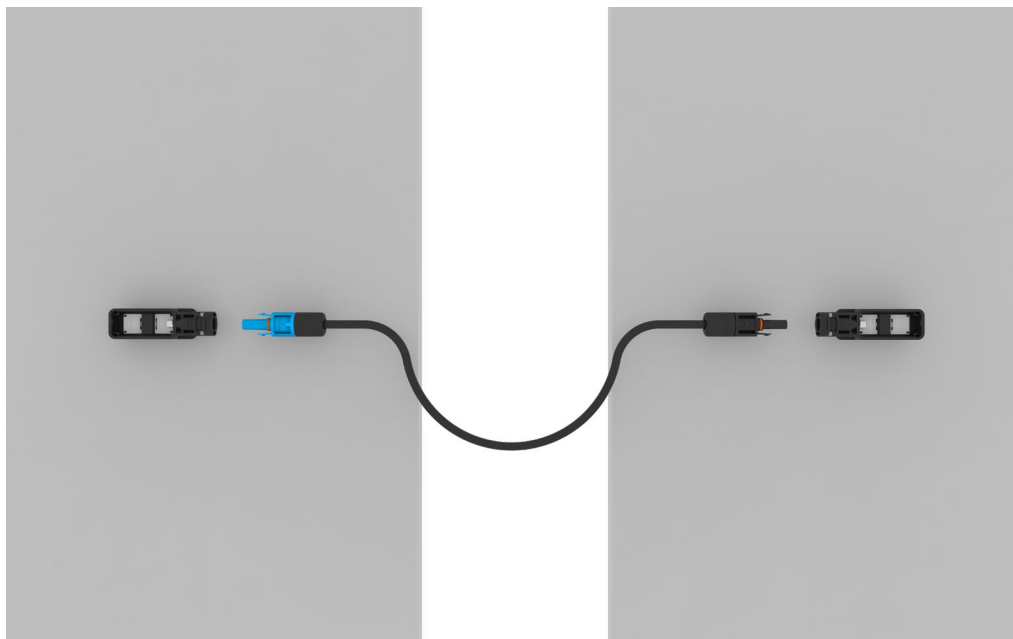
#### Drawing of junction box



## 4. 安装示意图 / Installation Diagram



组件连接图



连接细节图



# 快速可靠, 成就客户!

Quick and reliable, QC Solar devotes to satisfying customers.



苏州快可光伏电子股份有限公司

QC Solar (Suzhou) Corporation

---

 中国苏州工业园区新发路 31 号 (No.31,Xinfa Road,SIP,Suzhou,China, 215123.)

 0086-0512-62603392

 market@qc-solar.com

 www.quick-contact.com



快可官方微信