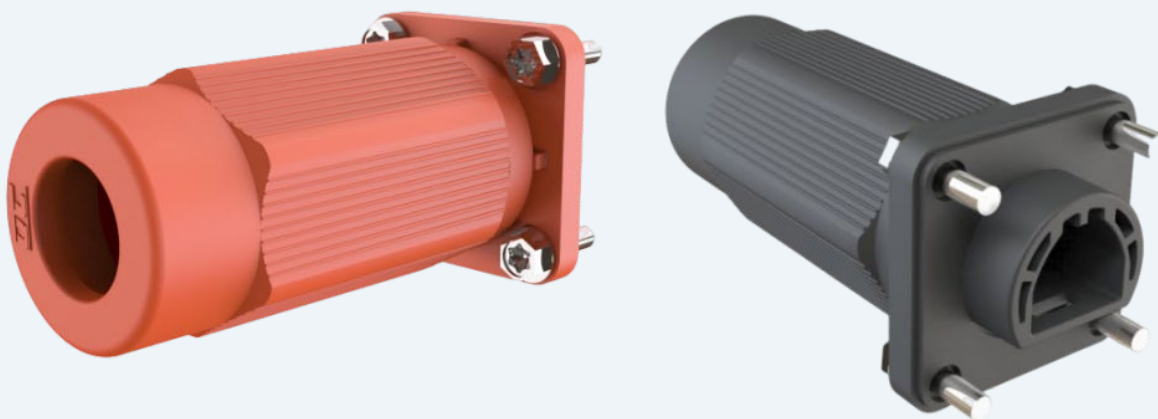


安装说明书

Installation Instructions

QE100 储能连接器

QE100 energy storage connector



目录 Contents

1	警告 /Caveat	01
2	产品在客户端装配时的物料清单 / The bill of materials when the product is assembled on the client	02
3	产品的装配 /Product assembly	03
4	连接器责任免除条款 /Connector liability exemption clause	05
5	联系方式 /Contact information	06

1.警告/ Caveat

1. 在自行安装时，如果所有的零件和工具不是 QC 所规定的，或者忽略了准备和安装操作，我们将不保证产品安全性和技术参数一致性。

1.During self-installation, if all parts and tools are not specified by QC, or the preparation and installation operations are ignored, we will not guarantee product safety and consistency of technical parameters.

2. 为防止电击，在拆装时连接器必须断开电源。

2.To prevent electric shock, the connector must be disconnected from the power supply during disassembly.

3. 终端产品必须提供防电击功能。

3.The terminal product must provide anti-shock function.

4. 如果要进行系统维护，请务必使该系统处于停止工作状态后再进行。

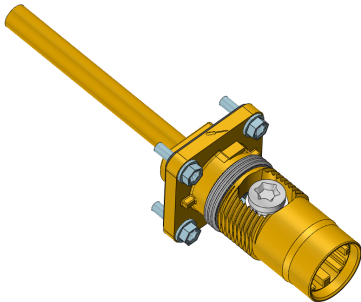
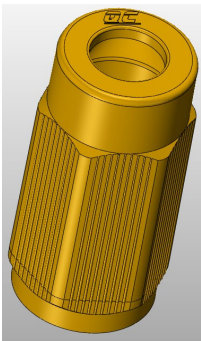
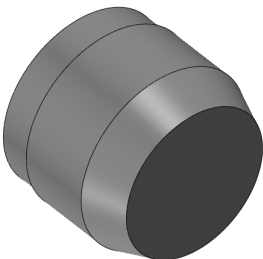
4.If you want to perform system maintenance, be sure to make the system stop working before proceeding.

5. 产品不得在含有烃、酚、酮、氨合物等与塑料有腐蚀的环境中使用。安装过程中，禁止在连接器里添加或涂抹任何油脂及润滑剂。

5.The product must not be used in an environment that contains hydrocarbons, phenols, ketones, ammonia compounds and other corrosive plastics. During the installation process, it is forbidden to add or apply any grease and lubricant to the connector.

2.产品在客户端装配时的物料清单/ The bill of materials when the product is assembled on the client

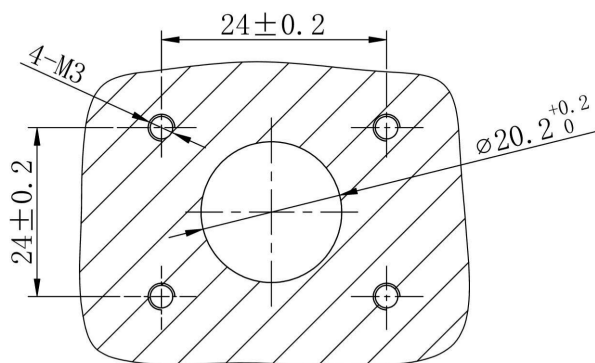
2.1 储能连接器 /Energy storage connector

序号 Serial numbe	名称 Name	料号 Part No.	图例 picture	数量 Quantity
1	插座壳体组合件 Socket Housing Assembly	--		1
2	螺帽 Nut	--		1
3	堵头 Plug	--		1

3.产品的装配/Product assembly

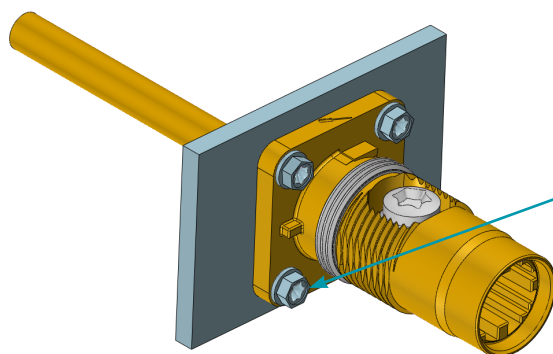
3.1 安装插座壳体组合件 Install socket housing assembly

3.1.1: 推荐面板开孔尺寸



装配流程 Assembly process:

3.1.2: 安装示意图 /Installation Diagram

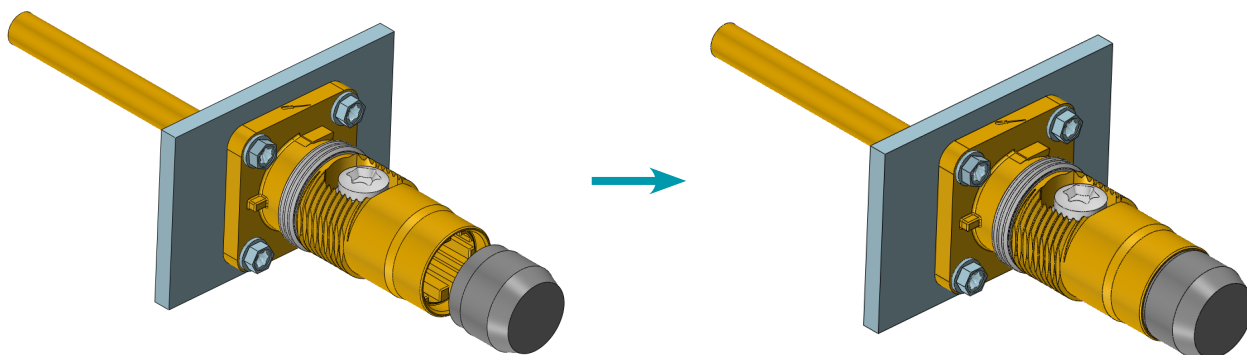


注意：使用螺丝将插座壳体固定在面板上：0.7N*m
Note: Fix the socket shell on the panel with screws

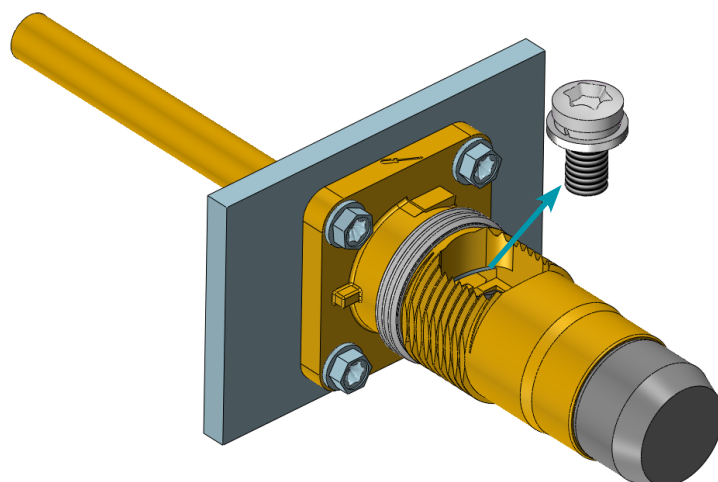
3.2 安装防水堵头 Install waterproof stopper

将防水堵头按下图所示依次安装在插座壳体上。

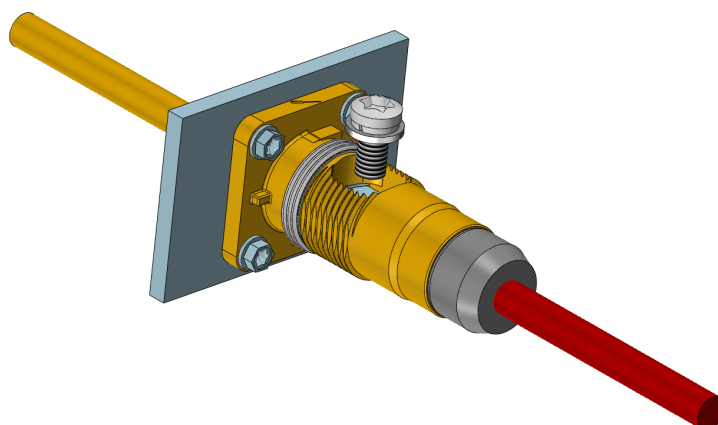
The waterproof plug are arranged on the socket shell as shown in the following diagram.



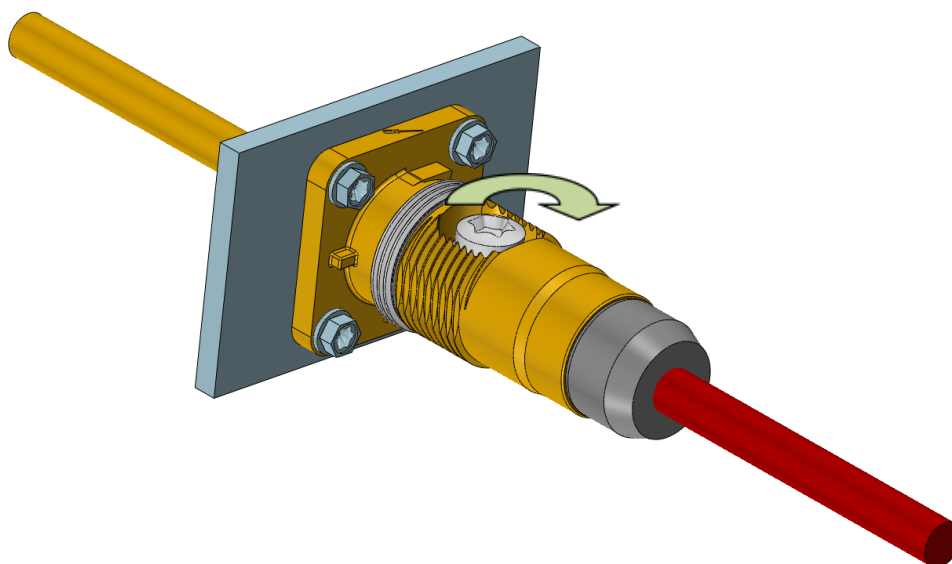
3.3 将螺丝取下 Remove the screws



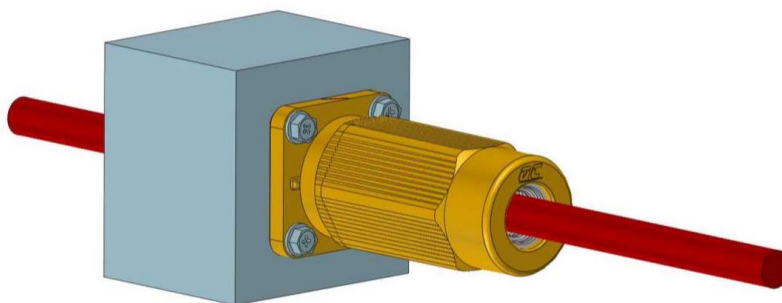
3.4 铆接端子的线缆插入插座壳体内 The cable of the riveted terminal is inserted into the socket shell



3.5 锁螺丝 Lock screw: 4N*m



3.6 拧紧螺帽 Tighten the nut



4.连接器责任免除条款/ Connector liability exemption clause

有违反下列情况之一者，并导致产品出问题，造成任何损失，我公司将不承担任何责任。

Anyone who violates one of the following circumstances and causes product problems and causes any loss, our company will not bear any responsibility.

1. 产品运输、仓储 / Product transportation and storage

1.1 产品在运输、仓库过程中，不可对产品过分承压，撞击等破坏产品行为；

During the transportation and storage of the product, the product should not be subjected to excessive pressure, impact, etc. to damage the product.

1.2 产品在运输、仓库过程中，常温存储，应注意避光、防水、防尘等方面防护，以免降低产品相关性能，电站现场应特别注意；

Products are stored at room temperature during transportation and warehouse, and protection from light, water, dust, etc. should be taken to avoid reducing product-related performance. Special attention should be paid to the site of the power station.

2. 产品安装、使用环境 / Product installation and use environment

2.1 产品正常工作环境温度 -40~+85℃；

Product normal working environment temperature -40~+85℃

2.2 产品现场安装，需按照“快可”产品“安装使用说明书”操作；

For on-site installation of the product, please follow the "Installation Manual" of the "Quick" product;

2.3 产品在沿海、沙漠等粉尘、粉尘、灰尘多的地域使用，产品出厂前必须带防尘帽；

The product is used in dusty, dusty, and dusty areas such as coasts and deserts, and the product must wear a dust cap before leaving the factory;

3. 连接器在未耦合情况下，产品将不能满足任何 IP 防护等级，也不能正常使用。

When the connector is not coupled, the product will not meet any IP protection level and cannot be used normally.

3.1 产品插入后满足 IP68 防护等级要求，但不能长期置于水下或屋顶上工作；

After the product is inserted, it meets the requirements of IP68 protection level, but it cannot be placed under water or on the roof for a long time;

3.2 连接器在未对插的情况下，不可长时间放置于户外，这样可能会造成金属件腐蚀，并使连接器性能降低；

When the connector is not mated, it should not be placed outdoors for a long time, which may cause corrosion of metal parts and reduce the performance of the connector;

3.3 连接器在户外安装、使用过程中，如果不能及时对插，请做好连接器防护工作，将连接器端

口插上“防尘帽”，防止连接器受到水、尘等的污染，影响产品使用性能。

During the outdoor installation and use of the connector, if it cannot be inserted in time, please protect the connector and plug the connector port with a "dust cap" to prevent the connector from being polluted by water, dust, etc., and affect product performance.

4. 连接器在安装、使用过程中，不可将连接器过分碰撞，拖在水中、草丛中、地上等防止连接器使用前，内部受到污染，降低产品性能。

During the installation and use of the connector, the connector should not be overly impacted and dragged in the water, in the grass, on the ground, etc., to prevent the connector from being polluted internally before use and reducing product performance.

此免责条款最终解释权归“苏州快可光伏电子股份有限公司”或“QC solar”所有。

The final interpretation of this exemption clause belongs to "Suzhou Kuaike Photovoltaic Electronics Co., Ltd." or "QC solar".

5.联系方式/Contact information

如本说明书所述内容与您收到的产品不符，请以实收产品为准。本说明书可以根据顾客要求配发，在公司网站可以提供有条件下载服务，如果您需要更多的说明书，请来电与我们联系，所有公司技术资料仅作为使用产品时的参考用，不得利用它进行其他的商业活动。

If the product is not match with what described in the manual, please regard what you received as the right one. This manual can be dispensed according to customers' requirements, the company's Web site can provide conditional download service, if you need more brochures, please contact us. All technical data is only as a reference when using the product, it can not be used for other business activities.

苏州快可光伏电子股份有限公司拥有本说明书著作权及最终解释权

QC Solar (Suzhou) Corporation has the explanation rights for this instruction.

苏州快可光伏电子股份有限公司有权随时对本说明书中可能出现的打印错误、产品技术改进、创新等方面做出修改，这些改动恕不另行通知，同时各语言版本翻译的不详之处以中文版为准。

QC Solar (Suzhou) Corporation has the rights to make certain amendment for the printing errors, improvements and innovation for the products, and there will be no prior notice when these changes happen. If there was any misunderstanding for the version in different language, please regard Chinese version as the right one.

本公司愿以光伏互连产品系统为全球环保、能源事业作出贡献


QC Solar is willing to make the contribution for global environment protection and energy by offering the products of solar connecting system

快速可靠, 成就客户!

Quick and reliable, QC Solar devotes to satisfying customers.



苏州快可光伏电子股份有限公司
QC Solar (Suzhou) Corporation

 中国苏州工业园区新发路 31 号 (No.31,Xinfa Road,SIP,Suzhou,China, 215123.)

 0086-0512-62603392

 market@quick-contact.com

 www.quick-contact.com



快可官方微信