

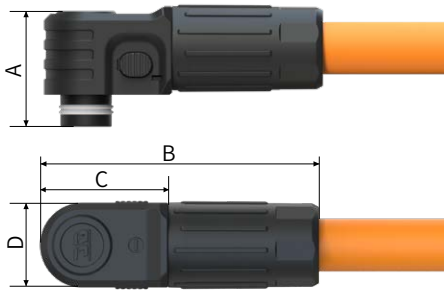
## ▶ QC-E 系列储能连接器



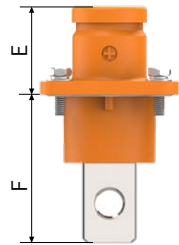
- ◎ 双按键设计, 符合人体工学  
Dual button design for ergonomics
- ◎ 双重锁定 (角度锁 + 拉拔锁)  
Double locking (angle lock + pull-out lock)
- ◎ 正负极防呆  
Positive and Negative Dulling
- ◎ 防水等级 IP67  
Waterproof grade up to IP67
- ◎ 螺栓防脱落设计  
Anti-stripping design of bolts

### 规格参数 Specification

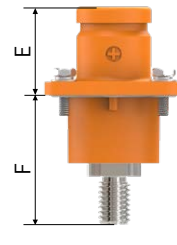
Rated Voltage 额定电压	IEC1500V/UL1500V
Temperature Range 温度范围	-40°C ~ 125°C
Shell Material 外壳材质	PA66+GF25%
Contact Resistance 接触电阻	≤ 0.5mΩ
Waterproof Grade 防水等级	IP67
Flammability Class 防火等级	UL94 V0
Service Life 使用寿命	≥ 500 次



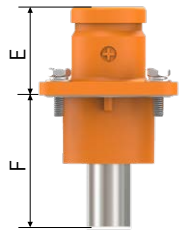
(QC-EL)



MH (内螺纹)



M (外螺纹)



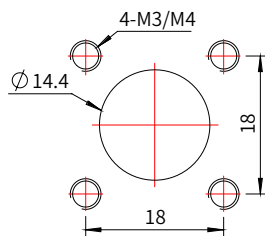
RJ (铆接)

型号 Model Number	Electric Current 电流 (A)	Cable Specifications 电缆规格 (mm <sup>2</sup> )	A	B	C	D	E	F		
								MH	M	RJ
QC-ET6	80A、120A	16、25	32	71	33	20	21.8	32	30	30
QC-EL8	200A、250A	50、70	36	83	38	25	23.4	37	35	35
QC-EL10	300A、350A	70、95	39	91	43	28	25.4	40	38	38
QC-ET6	80A、120A	16、25	/	81	44	24	21.8	32	30	30

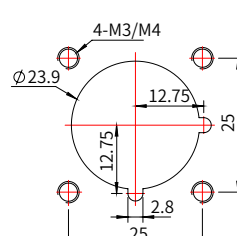


(QC-ET)

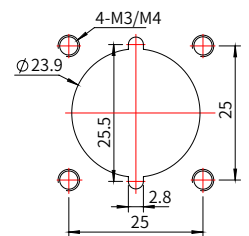
### 面板开孔尺寸图 Panel Cutout Dimensions :



QC-EL6



QC-EL8/10 正极 Positive pole



QC-EL8/10 负极 negative pole