

## X-7100 UPKTECH X-Ray inspection machine

### I. Description:

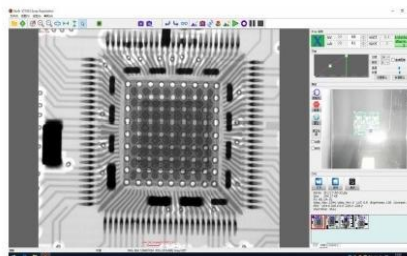
The X-7100 Inspection machine launched by Ruimao Optics has a wide range of applications. It is commonly used in the internal structure testing of electronic components, bubbles, void rate measurement short-circuit and open circuit, missing solder joints, missing solder, foreign matter cracks inside, etc.

It has the characteristics of easy maintenance and long service life; simple operation, reducing operator training; high detection repeatability; and allowing a maximum viewing angle of 60 degrees to detect samples.



### II. Features:

#### 1. Software interface



#### 2. NC programming

1. Simple mouse click operation to write detection program.
2. The stage can be positioned in X and Y directions
3. X-ray tube and detector Z-direction positioning.
4. Software sets current and voltage.
5. Image settings: brightness, contrast, auto gain and exposure.
6. Users can set the pause time for program switching
7. Anti-collision system allows for maximum tilt and viewing of objects.

#### 3. Function advantage

Function	Advantage
CNC program: automatic batch detection of different positions of samples	Auto ON / OFF X - RAY light tube batch testing samples
Array function: automatic batch detection of samples with fixed positions and the same spacing	Equipped with high stability and high precision X-ray tube
Bubble measurement: One-click measurement of bubble size, void rate, and tin climbing height	High resolution digital X-RAY tablet
Length and width measurement: measure the length and width of the partial detection area	Stage accommodates a large number of samples of various sizes
Visual navigation interface: precise positioning of detection location	Optional 360° rotation of the stage to detect samples
Analog Color: Better Observation of Inspection Images	Allows 60° tilt observation

### III. Specifications:

Model	X-7100
-------	--------

Tube	Tube type	closed
	Spatial resolution	5-6μm
	Tube voltage	90kv
	Tube current	200μA
Tablet	Image acquisition method	flat panel digital imaging
	Imaging accuracy	85μm
	A/D density value	16bit (65536)
	Resolution	1280*1024px
	Capture frame rate	30(FPS)
System	Magnification	200X/750X
	Operating system	WINDOWS 10
	Power	AC110-220V50-60HZ 1200W
	Radiation safety test	<1 uSV/H
Structure	Plate rotation angle	60°
	Stage size	540*540mm
	Detection range	510*510mm
	Stage load capacity	≤10kg
	Machine Dimension	1100*1360*1750mm(L*W*H)
	Machine size (including monitor)	1600*1800*2100mm(L*W*H)
	Machine weight	950kg
	Platform movement method	Automatic / Manual
Safety	CE certification	Yes: B-S191126500
	State exemptions	Yes
	Radiation Safety License	Yes