

UPKTECH ICMX/IS 2000 Solder Paste Storage Cabinet

I.Description

The equipment has an automatic temperature recovery rack module, an automatic stirring module, and an automatic storage module block, automatic entry and exit module, and barcode recognition module.



II.Specification

No.	Technical Parameters	Standard
1	Equipment model	ICMX/IS2000
2	Equipment size	940L*1750W*1920H
3	Power specifications	220V/50HZ
4	Equipment net weight	1400KG
5	Applicable solder paste specifications	The bottom diameter is less than or equal to 62 mm and the height is less than 80 mm,500G/bottle
6	Beat	The warehousing time is less than 15S, and the warehousing time is less than 10S.
7	Storage	324 bottles
8	Temperature recovery capacity	66 bottles
9	Feeding	Feed buffer 11 bottles
10	Discharge	Separate entrances and exits
11	Automatic stirring	1000R/MIN revolution, greater than 200R/MIN rotation.

III.Details

Quick access to warehouse

High-end model ICMX/IS 2000

Quick access to
warehouse

01

www.smt.com

Real-time online
inventory available

03

Advance reservation function allows manual quick pick-up and placement of materials manual timing recording, and the efficiency of material delivery can be increased by 6-8 times.

Inventory information can be viewed at any time ,and reports can be without the need for customized and generated based on solder paste specifications suppliers , P'N etc.

Save material storage space

02

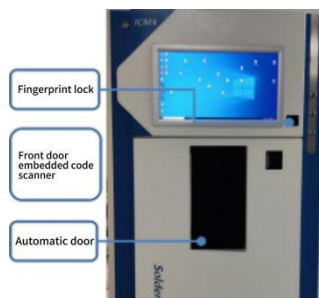
Can be foolproof and misplaced

04

Each single machine warehouse can store 324 bottles of solder paste, and the inventory area can be saved by 40%.

Customizable management rules:first in first out , disabled management overdue alarm ,sluggish reminder , Temperature and humidity monitoring.

ICMX/IS2000



Automatic door

According to customer needs, set up dedicated personnel operation permission, automatic the fingerprint lock can be opened after paste will identity recognition.

Storage entrance

Outlet

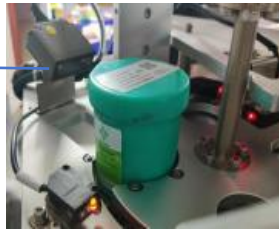


Automatic entry and exit

The operator places the product in the warehouse after opening,the storage can be completed;the solder automatically leave the warehouse and can be taken away.

Cold storage automatic door

Incoming material
scanning gun



Automatic code scanning

After the product is put into storage, the product will be automatically scan the QR code to confirm;according to the demand, the warehousing can also be carried out by manual scanning with an external embedded code scanning gun and then warehousing.



Cold storage automatic door

When solder paste is put in and out of the warehouse ,the cold storage door automatically opens and closes,effectively reducing cold air leakage and keeping the cold storage temperature constant

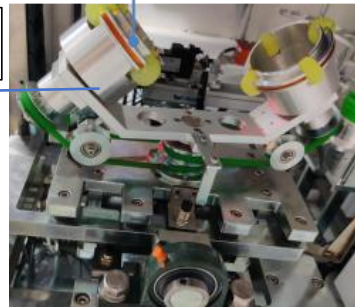
Warming
storage rack



Warming storage rack

There are a total of 66 temperature recovery and thawing positions in the 11 layers of the solder paste thawing area, one of which is the place where the solder paste weight block is placed.

Solder paste
mixing barrel



Solder paste mixer

The robot will transfer the defrosted products in the temperature recovery zone to the mixer for centrifugal mixing; when there is only one bottle of solder paste, a weight block will be placed at the other end for mixing.

FAQ

Q:What solder paste specifications are suitable for the equipment?

A:The bottom diameter is less than or equal to 62 mm and the height is less than 80 mm,500G/bottle.

Q:What is the storage capacity?

A:324 bottles.

Q:What is the temperature recovery capacity?

A:66 bottles.

Q:How long does it take to put in and put out of stock?

A:The warehousing time is less than 15S, and the warehousing time is less than 10S.