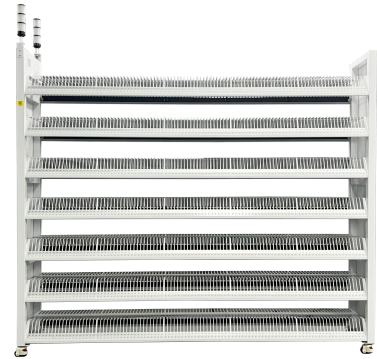


## UPKTECH 1400S Intelligent Material Rack

### I. Description

- Efficient entry and exit, error prevention and foolproofing, the entry and exit efficiency is increased by 70%.
- High-capacity storage, saving 60% of storage area.
- High-precision, self-calibrating sensor accurately records the location of materials, and the accounts are consistent.
- Real-time docking with ERP&MES system.
- First in, first out, fully intelligent management, real-time management and control of overdue and sluggish services.



### II. Specification

Technical Parameters	
Product Description	Can store 1400 trays of 7-inch electronic materials, 7 layers (thickness of tray 16mm);
Body size	2240*400*1950mm
Material	SPSS carbon steel
Color	White (can be customized)
Power supply	AC 220V 50Hz
Rated power	160W
Communication method	RJ45 network port+WiFi
Single layer load bearing	≤100Kg
Mobile material rack (car)	Have
A fixed way	Fuma wheel level adjustment
Anti-static measures	Main body anti-static paint + soft light lamp beads.

Working environment	-20~+40 °C /10%~90%RH
Voice broadcast	Have

### III.Honored customers



### IV.Application Scenario Diagram



**UPKTECH**

**UPKTECH TECHNOLOGY LIMITED**

Address: Room 207, Building 2, No. 5, 8th Road, Shapu Yangyong Industrial Zone, Songgang,  
Baoan District, Shenzhen, China, Postal Code: 518105

TEL: (+86) 136 5241 5612





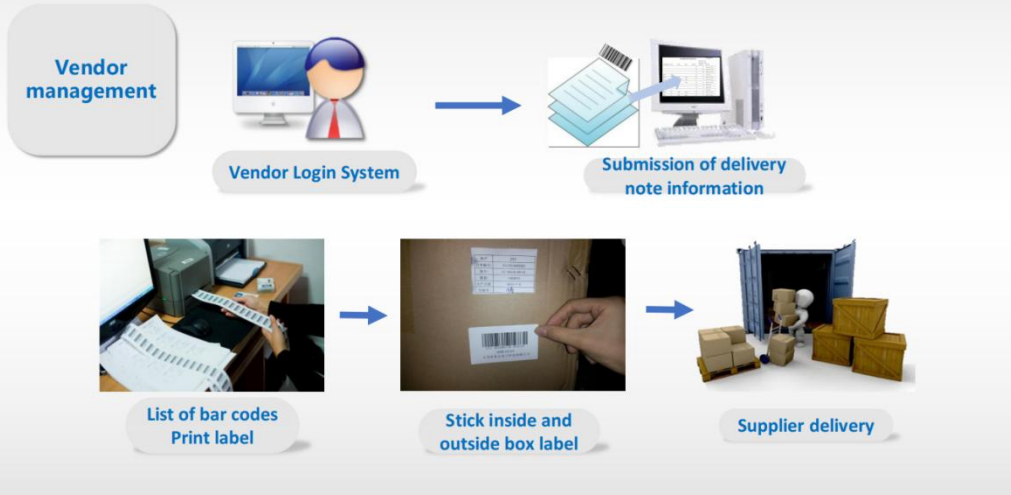
# UPKTECH TECHNOLOGY LIMITED

Address: Room 207, Building 2, No. 5, 8th Road, Shapu Yangyong Industrial Zone, Songgang,  
Baoan District, Shenzhen, China, Postal Code: 518105

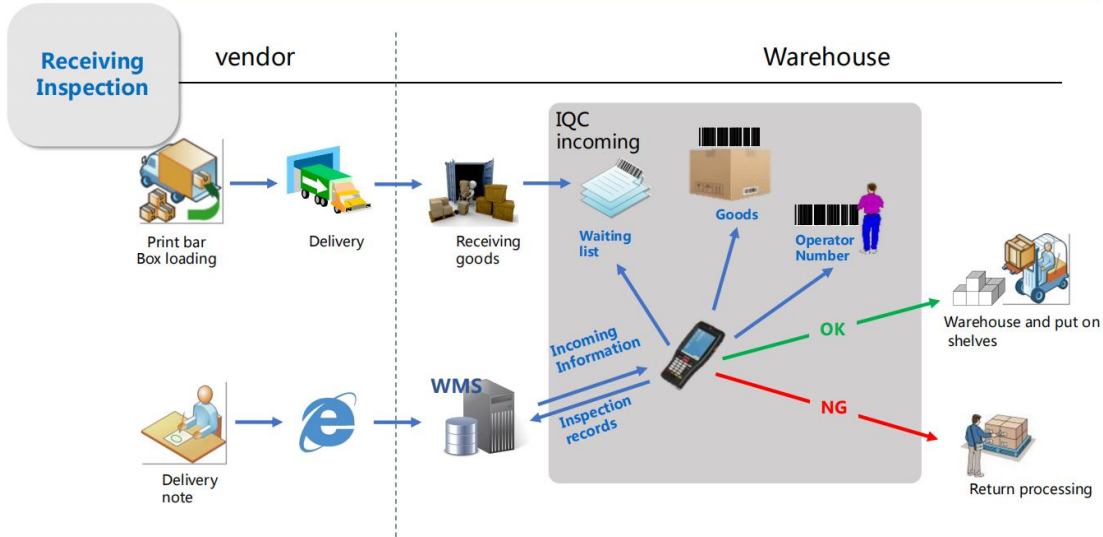
TEL: (+86) 136 5241 5612



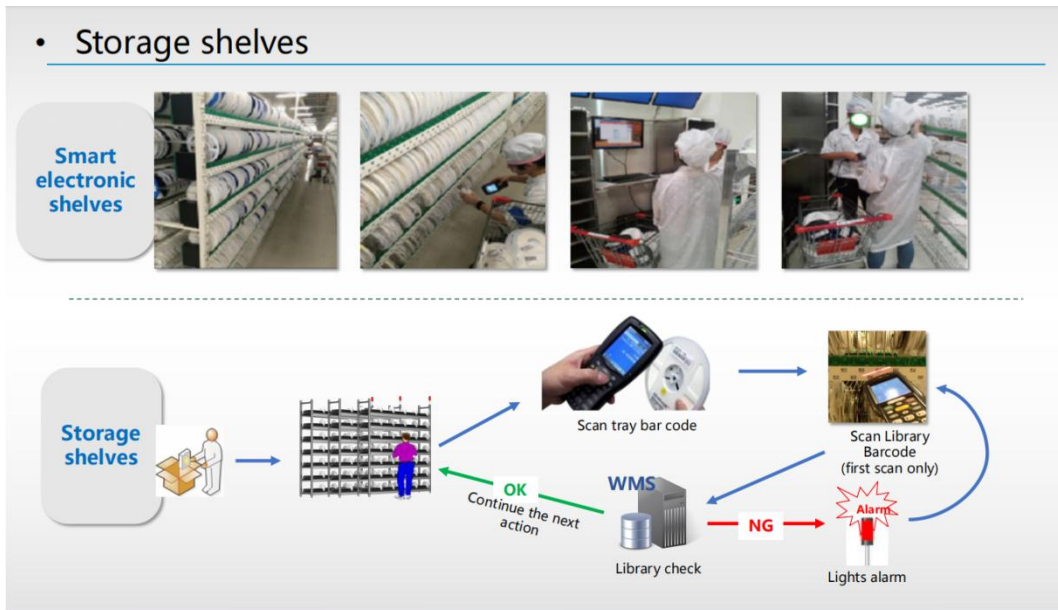
## Scenario 1: Vendor label management



• Scenario 2: Incoming IQC Inspection



• Storage shelves





## UPKTECH TECHNOLOGY LIMITED

Address: Room 207, Building 2, No. 5, 8th Road, Shapu Yangyong Industrial Zone, Songgang,  
Baoan District, Shenzhen, China, Postal Code: 518105

TEL: (+86) 136 5241 5612

### FAQ:

Q: What to do if the shelf has an abnormal red light on?

A: Scan the device number on the warehousing interface, click on the three small dots in the upper right corner to clear errors.

Q: What to do if the shelf has an abnormal green light on?

A: Materials that have not been reviewed when leaving the warehouse require an administrator to process them. In the software material removal module, select the removal type and select the storage location. Manually enter the flashing storage location, click Remove, and unbind the changed storage location. Remember to review and clear the materials after taking them out. lamp.

Q: The shelf does not light up and does not respond when touched?

A: Restart the shelf, check whether the shelf is powered on, and check whether the server is started.

Q: 3. What are illegal and prohibited operations?

A: The sensor cannot occupy water, the terminal behind the sensor cannot be pulled out, and materials cannot be forced into or pulled out!