

X-7100 X-Ray Inspector

X-Ray Automatic Inspection Machine



General-purpose, non-destructive testing system

Applications: Routers, electronic components, LED materials, Lithium batteries, Aerospace

The X-7100 Inspection machine has a wide range of applications. It is commonly used in the internal structure testing of electronic components, bubbles, void rate measurement, short-circuit and open circuit, missing solder joints, missing solder, foreign matter cracks inside, etc.

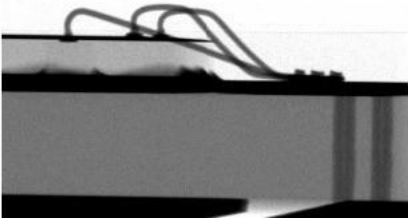
It has the characteristics of easy maintenance and long service life; simple operation, reducing operator training; high detection repeatability; and allowing a maximum viewing angle of 60 degrees to detect samples.

Specifications:

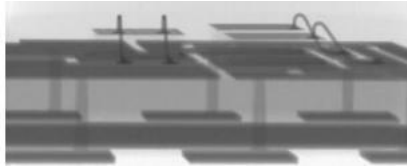
	Model	X-7100
Tube	Tube type	closed
	Spatial resolution	5-6 μ m
	Tube voltage	90kv
	Tube current	200 μ A
Tablet	Image acquisition method	flat panel digital imaging
	Imaging accuracy	85 μ m
	A/D density value	16bit (65536)
	Resolution	1280*1024px
	Capture frame rate	30(FPS)
System	Magnification	200X/750X
	Operating system	WINDOWS 10
	Power	AC110-220V50-60HZ 1200W
	Radiation safety test	<1 uSV/H
Structure	Plate rotation angle	60°
	Stage size	540*540mm
	Detection range	510*510mm
	Stage load capacity	≤10kg
	Machine Dimension	1100*1360*1750mm(L*W*H)
	Machine size (including monitor)	1600*1800*2100mm(L*W*H)
	Machine weight	950kg
	Platform movement method	Automatic / Manual
Safety	CE certification	Yes: B-S191126500
	State exemptions	Yes
	Radiation Safety License	Yes

Detection case:

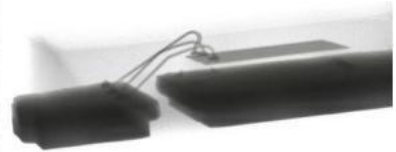
IC Wire



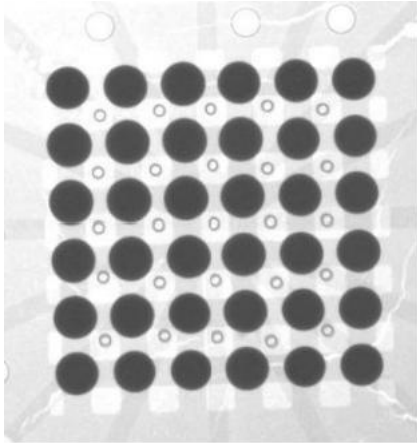
Led



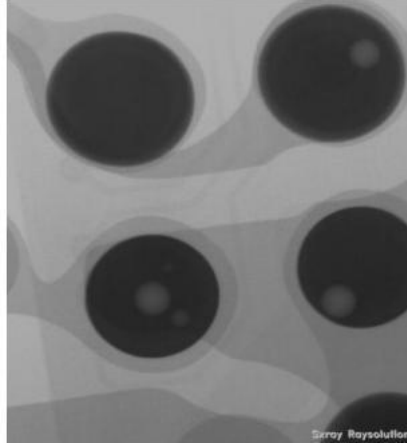
MINI Led



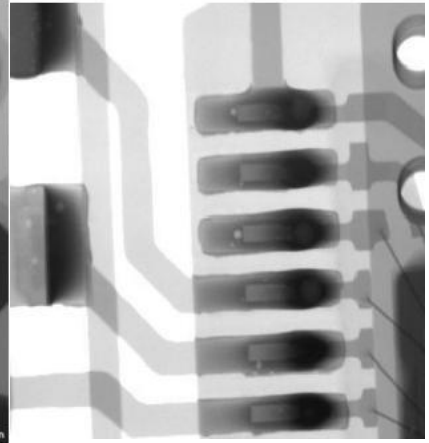
BGA solder ball



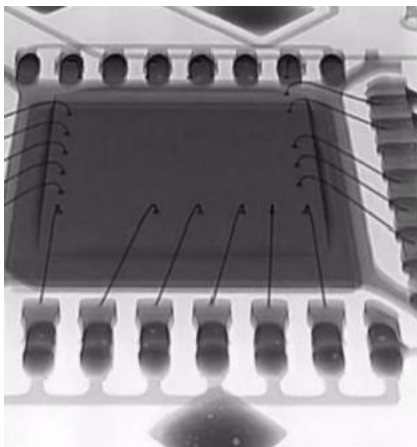
BGA bubble



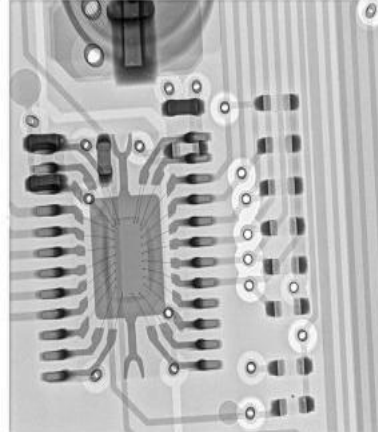
IC welding



Gold wire welding



Semiconductor inspection



IC line

