

X-160T-M

X-Ray Machine, NDT Casting Inspection Series



The X-160T-M equipment introduced can effectively target the current manufacturing industry, the problems of aluminum casting products, such as cracks, shrinkage, porosity, trachoma or other internal defects of aluminum casting, the above defects may cause great losses to their end users, such as causing product failure to be delivered.

At present, the market of aluminum castings is steadily growing, especially for some production-critical safety parts, for the need of production safety and product quality assurance, it is necessary to use X-Ray NDT equipment to detect the good and bad of aluminum castings.

Applications:

Aluminum casting ware



Hardware devices



Automotive Parts



Aerospace castings



IGBT Industry



Power Battery



Heat sink components



Spring Inspection

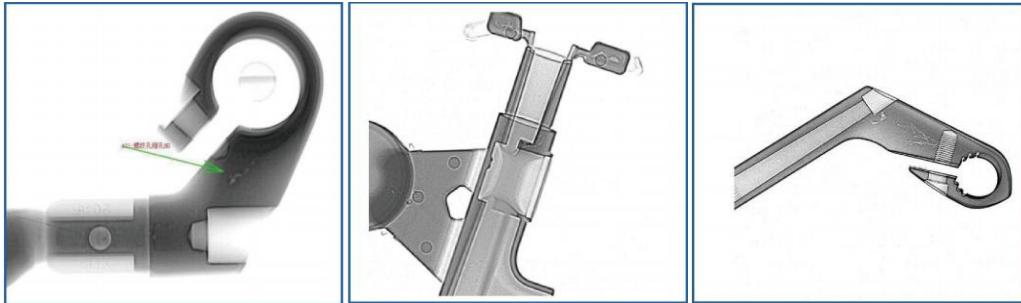


Detection case

NDT internal inspection 0.2mm

Automobile parts inspection

Casting inspection



Parameters

Tube	Model	X-160T-M
	Tube type	Closed shut pipe
	Spatial resolution	100 μ m
	Tube voltage	160kv
	Tube current	3mA
Tablet	Image acquisition method	Flat-panel digital imaging
	Imaging accuracy	139 μ m
	Imaging size	430*430mm
	Resolution	3072*3072px
	Pixel accuracy	$\leq 2 \mu$ m
System	Magnification	15X
	Operating system	WINDOWS 10
	Power supply/power	AC110-220V 50-60HZ 1200W
	Radiation safety test	<1uSV/H
	Protection standard	GB 18871-2022
Structure	Plate rotation angle	60°
	Stage size	450*450mm
	Detection range	420*420mm
	Load table load capacity	≤ 25 kg
	Machine size	876*1104*1936mm(L*W*H)
	Machine size with monitor	1440*1400*1936mm(L*W*H)
	Machine weight	1300kg
	Platform movement mode	Manual zoom in and out
Security	CE certification	Yes: B-S191126500
	State exemptions	Yes
	Radiation Safety Licenses	Yes