

# Installation Instruction



Only for reference! Please read this manual before assembling this product, and keep this for subsequent reference!

**Design sketch****Parts list**

No.	Name	Specification	Qty	Unit	Confirm
1	Light bars	1175mm*80mm	12	pieces	
2	Lamp connectors	90°	4	pieces	
3	Lamp connectors	180°	8	pieces	
4	— iron sheet	101*10mm 4 holes	16	pieces	
5	L iron sheet	42*42*10mm 4 holes	8	pieces	
6	Buckles	75mm	12	pieces	
7	Self-tapping screw	M5*10mm	24	pieces	
8	Countersunk screw	M5*4mm	96	pieces	
9	Plastic expansion bolt	M4*25mm	24	pieces	
10	LED driver	400W	2	pieces	
11	Led driver mounting	Fix the led driver on the lamps	1	pieces	
12	Installation	-	1		

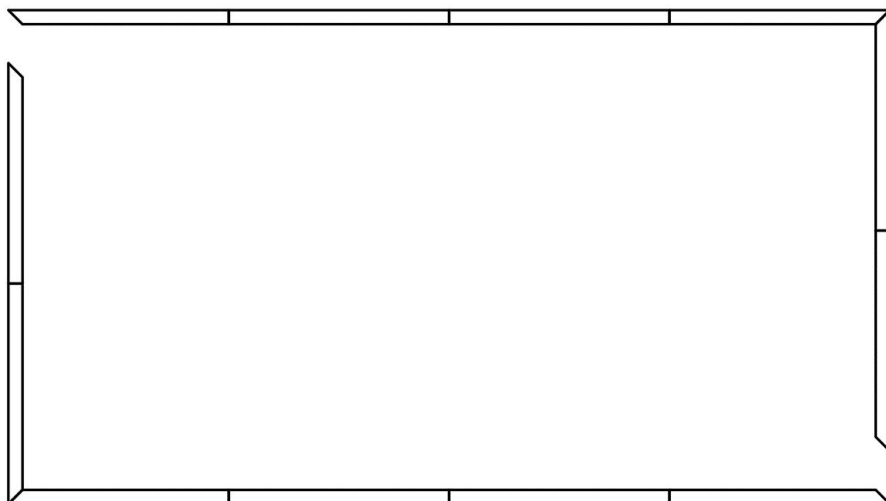
**Technical Data**

Voltage	AC110V
Power	680W
Current	12.4A

## Assembling instruction

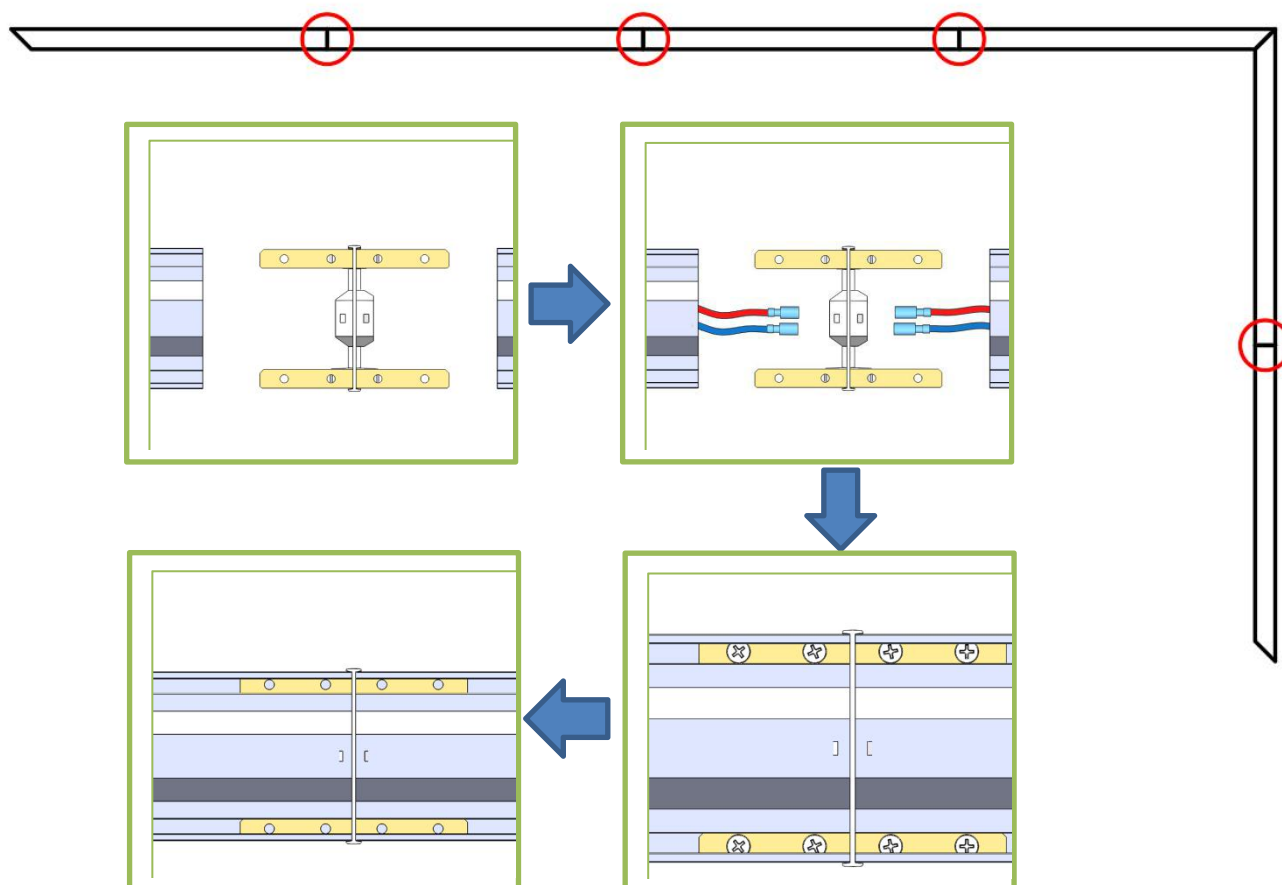
12 piece light bars, for 2 groups,

Different group do not wiring together.



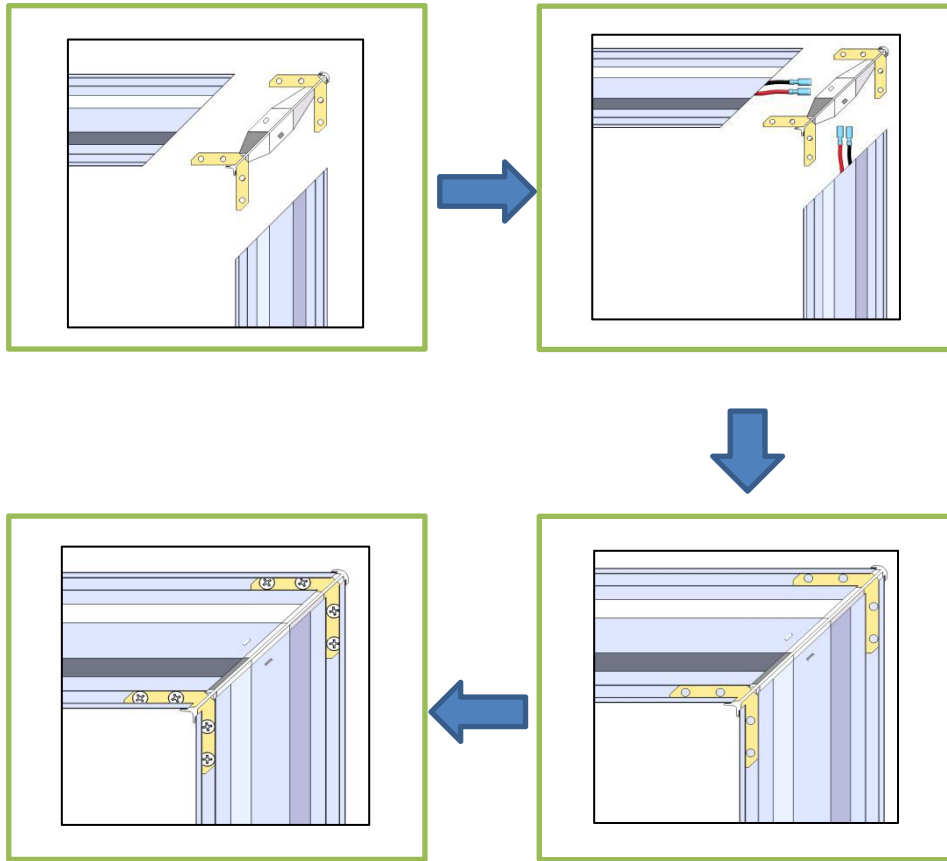
### Step 1

① [ 180° Lamp connectors ]

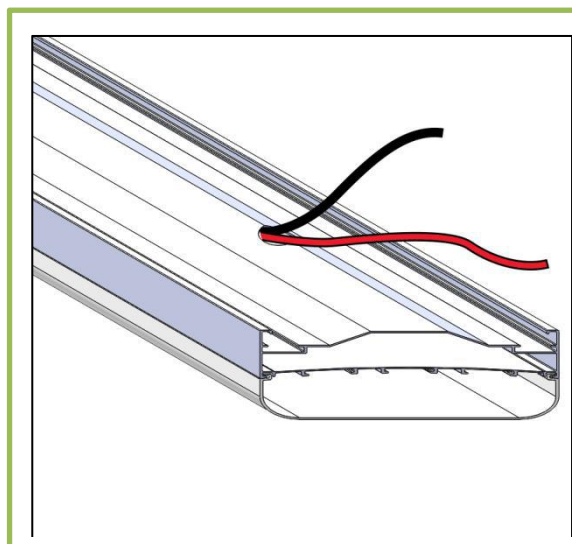


## Step 2

### ② [ 90°Lamp connectors ]

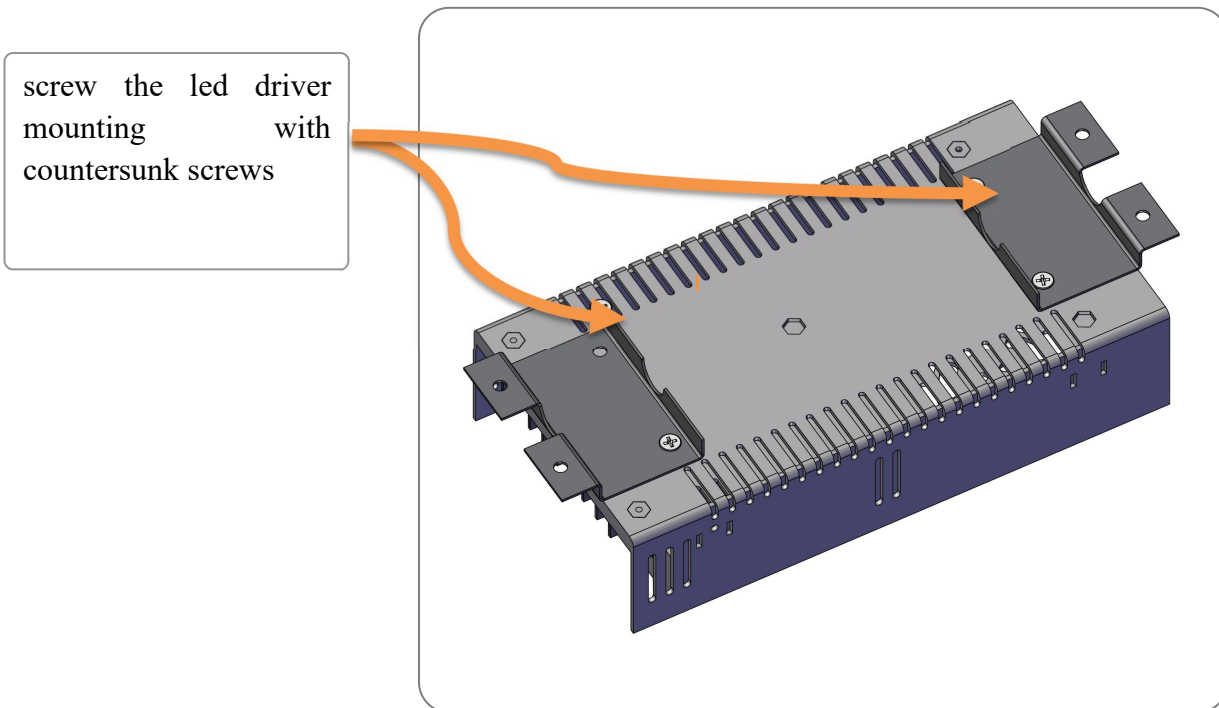


### ③ WIRING

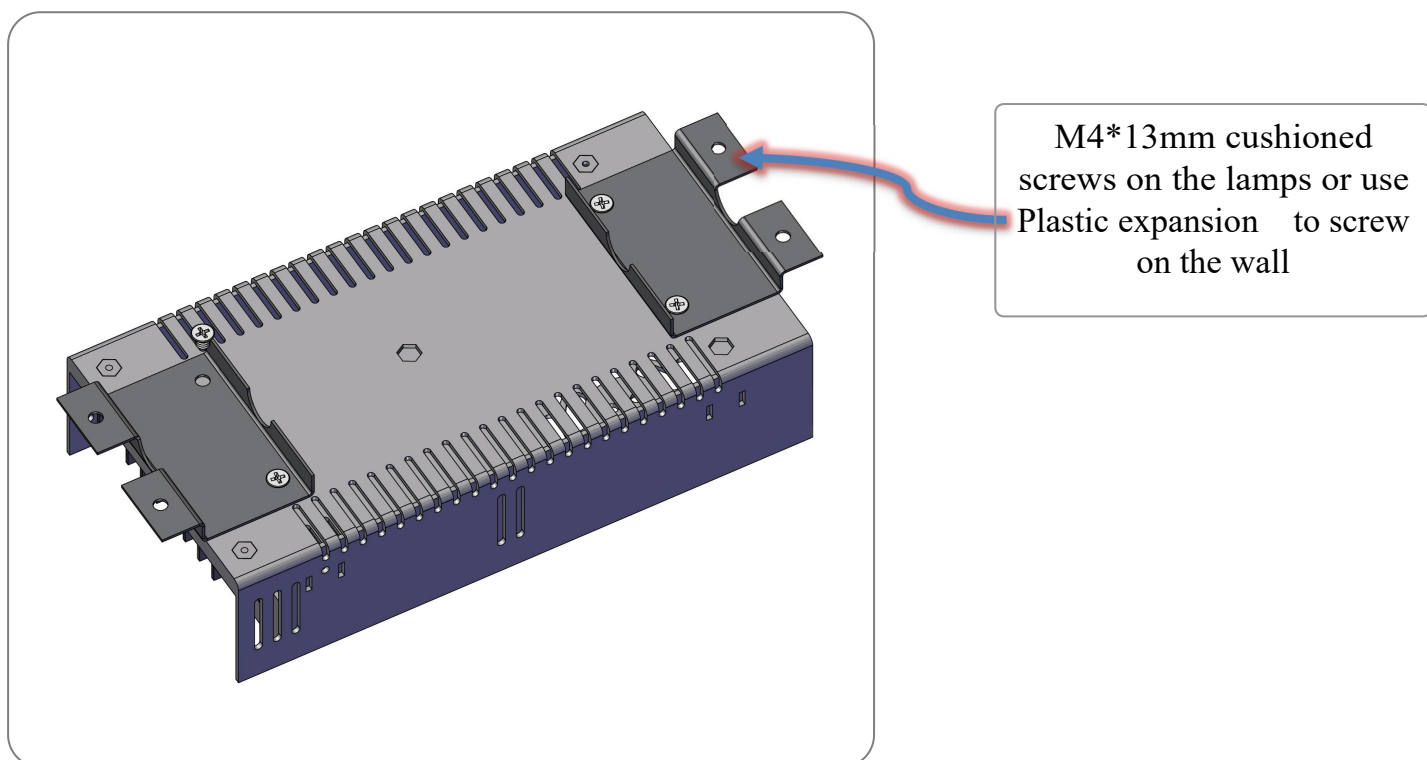


**Caution:**  
Lamp bars for DC24V, cannot electrical to AC110V directly!!  
Please wiring into the drivers before connecting with AC110V.

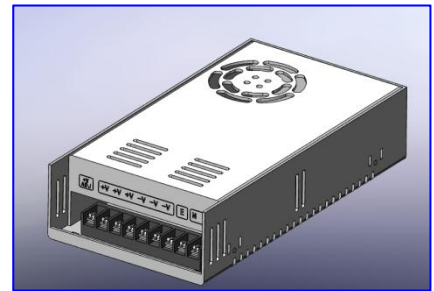
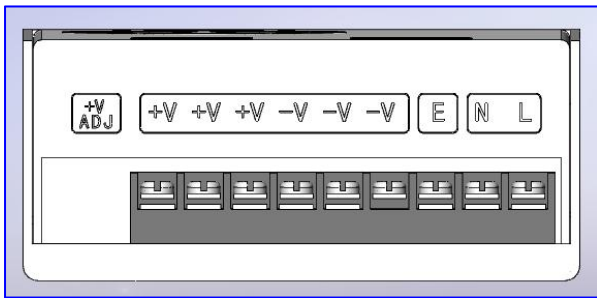
# 1. Fix the led driver



Screw the led driver mounting on the lamps with cushioned screws



Driver shows: each driver cannot exceed 400W



**V+:** positive pole DC24V 【CONNECT WITH RED WIRE OF LAMPS】

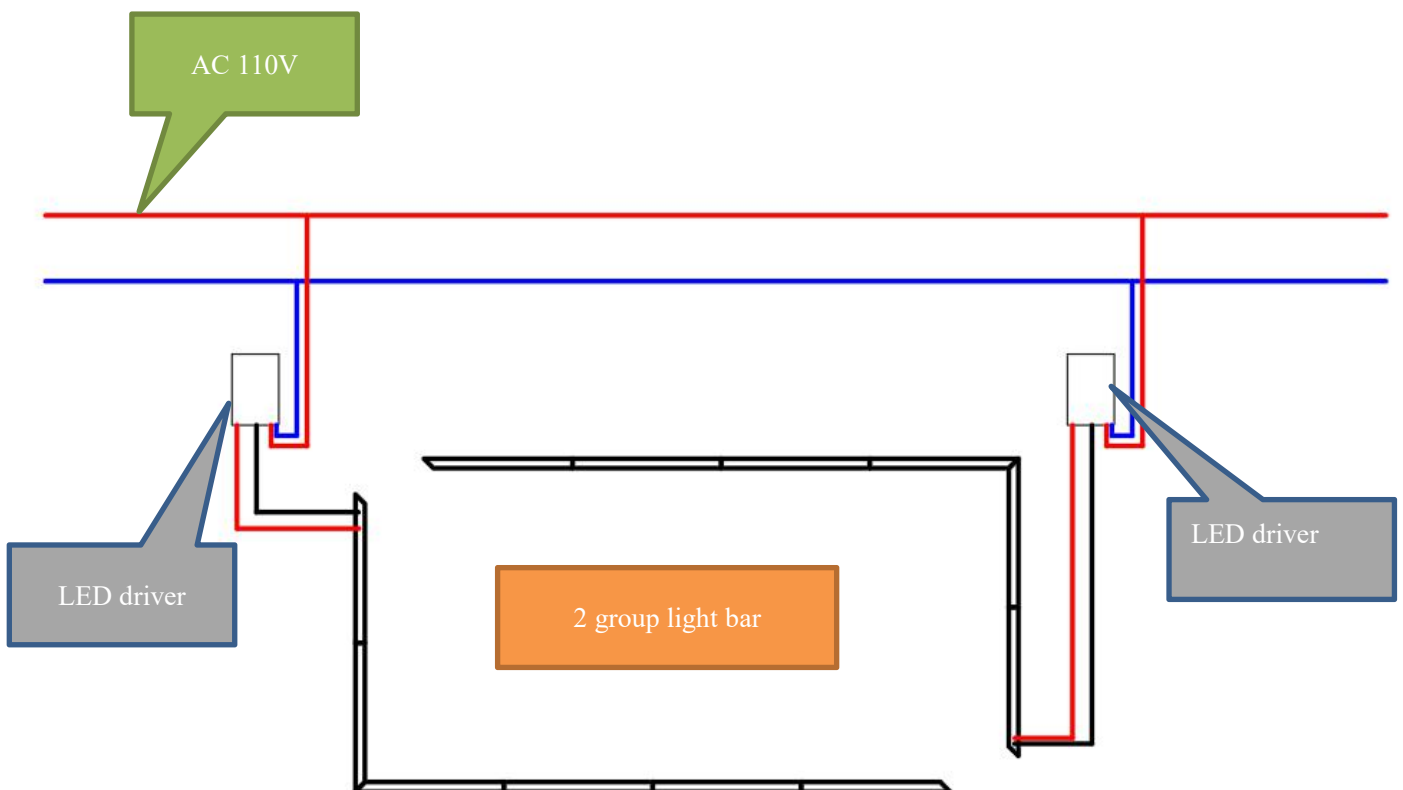
**V-:** negative pole DC24V 【CONNECT WITH BLACK WIRE OF LAMPS】

**E:** earth lead

**N:** null line AC110V

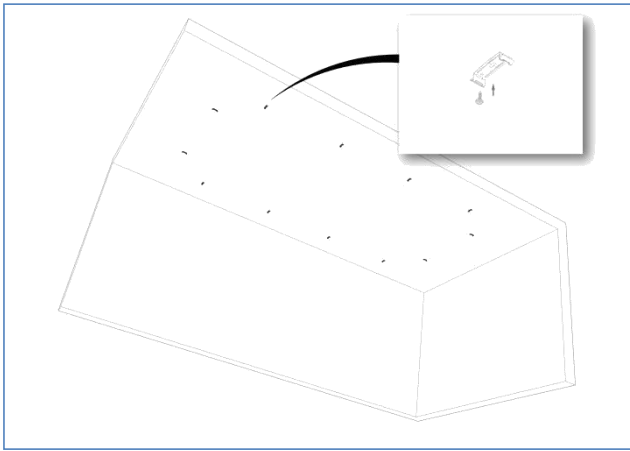
**L:** live wire AC110V

**Remarks:** there are 2 pieces of 400W drivers for the lamp, 2 groups of wires out from lamp, and divide the 2 groups electrical to 2 drivers.

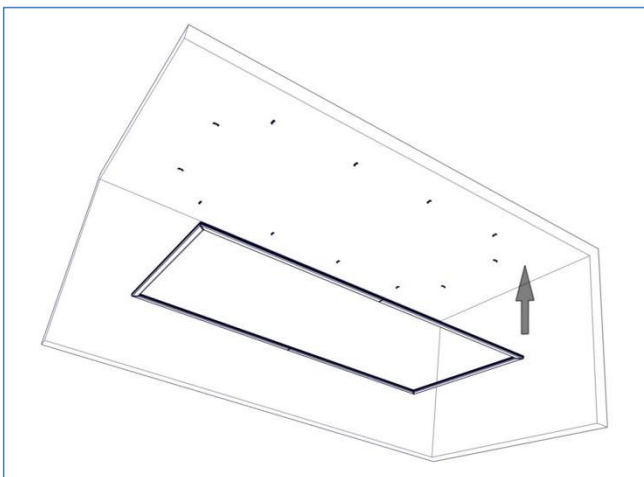


## Mounting Instruction

**Step 4** How to install the lamp to the roof.



**Drill holes for the plastic expansion bolt into the ceiling first, then put the plastic expansion bolt into the holes, and then screw the buckles into the plastic expansion bolt with self-tapping screws.**



**Push the lamps into the buckles.**

