

YD Hardware

YD Hardware Co., Ltd.

YD Hardware

Jiangmen YD Hardware Co., Ltd.



2025
PRODUCT
CATALOGUE





FACTORY SCALE

60000+ SQM
200+ Employees
500+ 40HQ / Year



CERTIFICATION

NSF / BSCI / ISO9000
LFGB / CE / ROHS / ETL / FDA



SCOPE OF BUSINESS

Hotel & Restaurant manufacturer
& design & leader



SLOGAN

Slogan Make quality profitable &
affordable win-win &
Long term cooperation

Jiangmen YD hardware Co., Ltd is one of the leading stainless steel and plastic hotel & restaurant kitchen manufacturer in China with NSF & BSIC & ISO9000 factory audit. We introduce advanced equipment for high production efficiency, such as world class numerical control punching, deep drawing, bending, polishing machine, etc. We have our own environmental electrolyze washing and enamel coating product line, which can make cold stainless steel become more colorful & elegant. Equipped with a skilled engineer team, professional sales team and strict QC quality control system. Not matter the products' quality and cost, but also the after-sales service make you satisfied & competitive all the times.

We are not only a traditional OEM manufacturer on stainless steel gn pan, chafing dish, beverage dispenser, service trolley, metal fabrication and plastic kitchenware, but also an innovative & revolutionary exporter on developing various commercial kitchen supplies with our long-term partner. We achieve many successful cases in the past 10+years. Our core value is to make our partners become giants in their local market.

Looking forward to the future, we will move to a new 100000 SQM industrial zone to combine all production line in one place. We sincerely wish to extend more different projects with our oversea partners for mutual win-win relationship.

CHAFING DISH WORKSHOP GN PAN WORKSHOP



METAL FABRICATION WORKSHOP FOR WORK TABLE



PAINTING WORKSHOP



PLASTIC KITCHENWARE WORKSHOP



SHOWROOM



Equipment

02 - 33

- Snack Food Equipment
- Coffee & Beverage Machine
- Other Equipment

02 - 06
07 - 20
20 - 33

EQUIPMENT

Commercial Electric Griddle

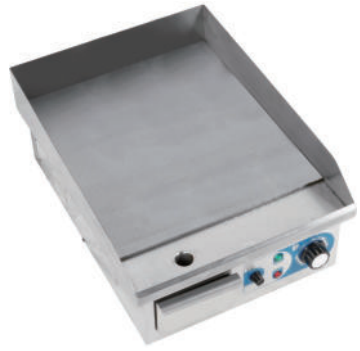
- Temperature range of 50 -300 °C (122 F -572 F) adjustable
- Stainless steel structure ensure longer life.
Grill plate thickness:8mm
- Perfectly suited for a variety of dishes, for restaurants, snack bars, vending carts
- Easy to clean, removable drip tray for fat/oils
- Non-Skid rubber feet prevent slipping
- Products tested to meet EU standards (CE certification)



MODEL YDEG818AFR



Commercial Electric Griddle



MODEL YDEG810AF



MODEL YDEG810AFR



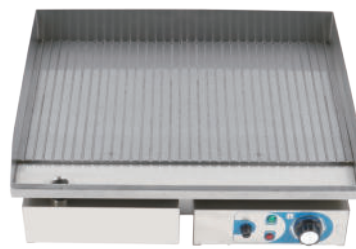
MODEL YDEG810AR



MODEL YDEG818AF



MODEL YDEG818AFR



MODEL YDEG818AR



MODEL YDEG820AF



MODEL YDEG820AFR



MODEL YDEG820AR

Griddle Plate OPTION



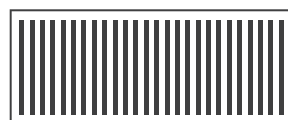
AF

ALL FLAT



AFR

HALF FLAT HALF RIBBED



AR

ALL RIBBED

Item No.	Voltage	Power	Dimensions (mm)
YDEG810AF	220V / 110V	2KW / 1.2KW	364x480x228
YDEG810AFR	220V / 110V	2KW / 1.2KW	364x480x228
YDEG810AR	220V / 110V	2KW / 1.2KW	364x480x228
YDEG818AF	220V / 110V	3KW / 1.8KW	530x436x228
YDEG818AFR	220V / 110V	3KW / 1.8KW	530x436x228
YDEG818AR	220V / 110V	3KW / 1.8KW	530x436x228
YDEG820AF	220V / 110V	4.4KW / 2.6KW	724x482x228
YDEG820AFR	220V / 110V	4.4KW / 2.6KW	724x482x228
YDEG820AR	220V / 110V	4.4KW / 2.6KW	724x482x228

Commercial Electric Griddle Enamelled Plate

- Temperature range of 50 -300 °C (122 F -572 F) adjustable
- Stainless steel body and enamel plate, enamel plate thickness: 6mm
- The enamel gives to the steel a better quality of finishing. It is a mass enamel with good resistance to friction. This enamelled coating facilitates the use and cleaning of the device.
- Perfectly smooth appearance, the enamelled steel plate allows very good contact cooking for a direct heat transfer to the food to be cooked. This fry top is widely used in traditional restaurants and food-trucks.
- Non-Skid rubber feet prevent slipping
- Products tested to meet EU standards (CE certification)



Item No.	Voltage	Power	Dimensions (mm)
EG3638	220V / 110V	1.5KW / 0.9KW	360x380x230
EG5438	220V / 110V	2.2KW / 1.32KW	540x380x230
EG7350	220V / 110V	3KW / 1.8KW	730x500x230



MODEL EG7350



All contact grills can change to digital display. User can adjust both time and temperature.



MODEL EG3638



MODEL EG5438



MODEL EG7350

Commercial Cast Iron Electric Griddle

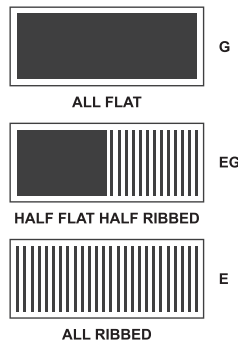
- Temperature range of 50 -300 °C (122 F -572 F) adjustable
- The enamel gives to the steel a better quality of finishing. It is a mass enamel with good resistance to friction. This enamelled coating facilitates the use and cleaning of the device: it is possible to use metal spatulas without altering the plate.
- Perfectly smooth appearance, the enamelled steel plate allows very good contact cooking for a direct heat transfer to the food to be cooked. This fry top is widely used in traditional restaurants and food-trucks.
- Non-Skid rubber feet prevent slipping
- Products tested to meet EU standards (CE certification)



MODEL YDDR016



Griddle Plate OPTION



Item No.	Voltage	Power	Diemensions (mm)
GP5530G	220V / 110V	2.3KW / 1.3KW	540x330x240
GP5530EG	220V / 110V	2.3KW / 1.3KW	540x330x240
GP5530E	220V / 110V	2.3KW / 1.3KW	540x330x240
GP7050G	220V / 110V	2.3+2.3KW / 1.3KW+1.3KW	700x530x220
GP7050EG	220V / 110V	2.3+2.3KW / 1.3KW+1.3KW	700x530x220
GP7050E	220V / 110V	2.3+2.3KW / 1.3KW+1.3KW	700x530x220

Electric Fryer Series

- Selected high-quality stainless steel material, high strength, good toughness, simple design, pressing beautiful, smooth;
- High-efficiency heating tube, heating fast, fried food crisper;
- The safety drain valve design, the separation frying oil is safer and more convenient;
- The overtemperature protection device, guarantees the food normal frying temperature; does not dare not to burn, simultaneously guarantees the equipment safety and the personnel safety.



MODEL EF-30V

Item No.	Size/cm	Power	Voltage
EF-20V	590x540x360	3KW	220V-240V
EF-30V	600x580x430	6KW	220V-240V

Counter Top 2-Tank 2-Basket Electric Fryer



MODEL EF082

Item No.	Size/cm	Power	Voltage
EF-4L	217x400x290	2KW	220V-240V
EF-4L-2	435x400x290	2+2KW	220V-240V
EF081	550x435x340	3+3KW	220V-240V
EF082	430x280x340	3KW	220V-240V

Counter Top 2-Tank 2-Basket Electric Fryer



Item No.	Size/cm	Power	Voltage
EF-903	330x660x435	4.5KW	220V-240V
EF-904	655x595x480	4.5+4.5KW	220V-240V
EF-12/13	290x500x410//350x500x410	3.25/5KW	220V-240V
EF-12/13-2	580x500x410//700x500x410	3.25+3.25//5//5+5KW	220V-240V



MODEL EF-12L-2/13L-2



MODEL EF-904



MODEL EF-903



MODEL EF-12/13

Table Electric Fryer



MODEL EF041



MODEL EF-10L



MODEL EF-15LHF/17LHF



MODEL EF-15LLEA-2



Item No.	Size/cm	Power	Voltage
EF041	440x200x300	2KW	220V-240V
EF-10L	500x285x350	3KW	220V-240V
EF-15LHF/17LHF	420x550x450//510x550x450	4/4.5KW	220V-240V
EF-15LLEA-2	600x550x450	4KWx2	220V-240V

Fried Basket



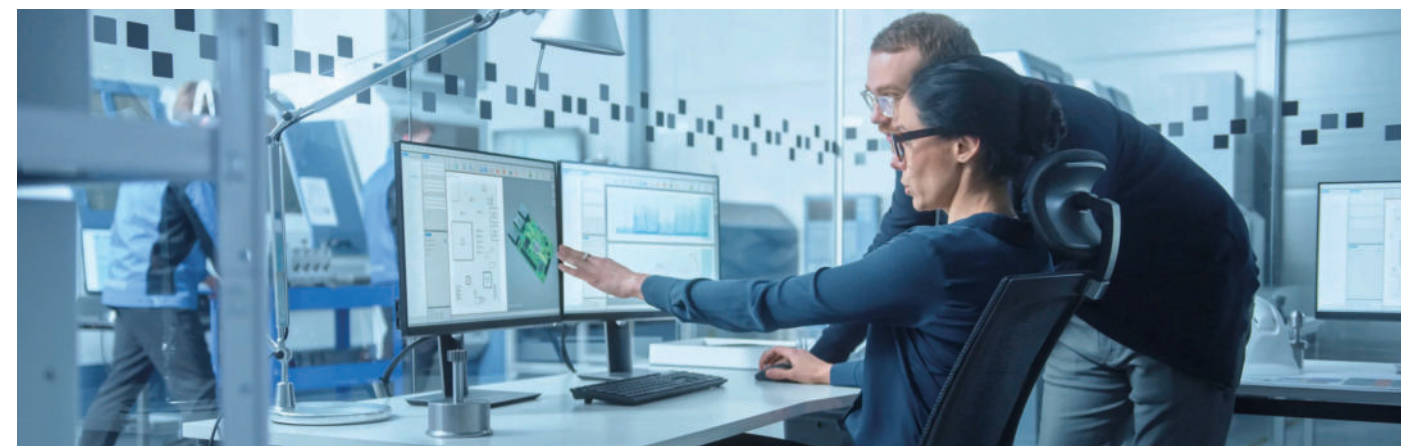
MODEL VA-EF81-FB



MODEL VA-EF81-FB

Oil Tank

- ODM/OEM service: Welcome to offer any new products' drawing, we can produce the same mould tool & make massive production with our professional deep-drawing technology.



Fry Chip Warmer Station

- Our Unique Patent
- Flat package to save shipping cost & online sales
- Infinite Control Infrared heated tubes, high heat efficiency
- Heating cover can work with different part: GN pan, french fries station & warming plate
- Wide temperature range of 30 to 85°C
- Efficient and quick heating with a total power of 500W to keep chips hot and crisp
- Low-maintenance, removable food pan
- Precise thermostat for a constant temperature
- Robust and easy to clean stainless steel casing
- With infinity control for the power and heating



Item No.	Size/cm	Voltage	Remark
EFC-01A	57*34*H43.5	110~120V/60Hz 220~240V/50Hz	Feature: Insert GN 1/1-65MM
EFC-01B	57*34*H43.5	110~120V/60Hz 220~240V/50Hz	With Infinite Controller Feature: Insert GN 1/1-65MM
EFC-02A	57*34*H43.5cm	110~120V/60Hz 220~240V/50Hz	Feature: Insert GN 1/1-100MM
EFC-03B	57*34*H43.5cm	110~120V/60Hz 220~240V/50Hz	With Infinite Controller Feature: Insert GN 1/1-150MM



MODEL EFC-01A



MODEL EFC-03B



MODEL EFC-02A

Fry Chip Warmer Station

- Durable Material: It is made of high quality stainless steel material, strong and durable.
- Double Heating: Its bottom food heat plate and top food heat lamp can provide double heating
- Adjustable Temperature: Its bottom temperature is adjustable, and the adjustment range is 30-85°C/86-185°F.
- Large Platform: Its food heat plate measures, which is large enough to hold your dishes.



MODEL TSWP5332



MODEL PW-E5332



MODEL EFFS01A



MODEL FFS01A

Item No.	Size/cm	Voltage	Remark
PW-E5332	53*32.5*H43.5	110~120V/60Hz 220~240V/50Hz	With Heating Cover
PW-E5050	52.5*52*45.5	110~120V/60Hz 220~240V/50Hz	With Heating Cover
TSWP5332	53*32.5*H6.5cm	110~120V/60Hz 220~240V/50Hz	Temperature Control: 30~85°C With 120°C protector
TSWP5050	50*50*H6.5cm	110~120V/60Hz 220~240V/50Hz	Temperature Control: 30~85°C With 120°C protector
EFFS01A	52*38*H45cm	110~120V/60Hz 220~240V/50Hz	With Heating Cover & LED light
EFFS01B	52*38*H45cm	110~120V/60Hz 220~240V/50Hz	With Heating Cover & LED light & Infinite Controller
FFS01A	52*37.5*H14.5cm	110~120V/60Hz 220~240V/50Hz	
FFS01B	52*49*H14.5cm	110~120V/60Hz 220~240V/50Hz	

Pasta Warmer

- Whole S/S material, durable 2 or 4 baskets to contain the noodle
- 2 separate temperature controllers
- Rapid boiling, energy saving and power saving, health and convenience.



Item No.	Voltage	Power	Size/cm	Size/MM
PCM4L	220V	2000W	44x20x30	Φ125*130
PCM4LD	220V	2000W+2000W	44x38.5x30	Φ125*130
PAC-8	220V	2000W	35.5x31x23.5	Φ125*130
PAC-44V	220V	4000W	40x45.5x28	Φ125*130



MODEL PAC-8



MODEL PCM4LD



MODEL PCM4L



MODEL PAC-44V



Commercial Hot Dog Steamer/Electric Bun Warmer

- Large Storage Capacity two-tier design, sufficient to contain around 175 hot dogs and 40 buns.
- Double Glass Slide Doors easy to open and keep the inside warm to seal in the fresh flavors.
- Well-Built Construction, durable stainless steel and thickened tempered glass
- Adjustable Temperature, Temp range: 20~85°C (57~ 185°F).
- Extensive Applications fast food chains, bakeries, convenience stores, cafeteria, etc.



Item No.	Voltage	Power	Dimensions(mm)
MLP-001	220V / 110V	900W / 540W	342*382*510



Adjustable Temperature Range



New design Drain valve Easy to clean



Large Storage Capacity



Commercial Hot Dog Roller Warmer

- Built in bun warming drawer with its own temperature control.
- Dual temperature control (front & back) allows you to cook and/or keep hot dogs warm for higher serving efficiency.
- 7,9,11 non-Stick and premium grade stainless steel rollers, rotate 360 degrees.
- Perfect for both commercial uses and household uses, such as convenient stores, liquor stores, long meetings.
- Durable Stainless Steel construction. Easy to use and easy to clean.
- Compatible sneeze guard protective cover (Acrylic and glass) can be choose



MODEL SGW7/9/11



Item No.	Voltage	Power	Diemensions(mm)
EF-7G	220V/50HZ	1.36KW / 816W	515*390*385
EF-9G	220V/50HZ	1.96KW / 1.18KW	515*460*385
EF-11G	220V/50HZ	2.06KW / 1.24KW	515*540*385
EF-7GA	220V/50HZ	1.36KW / 816W	515*390*385+220
EF-9GA	220V/50HZ	1.96KW / 1.18KW	515*460*385+220
EF-11GA	220V/50HZ	2.06KW / 1.24KW	515*540*385+220
EF-7GB	220V/50HZ	1.36KW / 816W	515*390*385+220
EF-9GB	220V/50HZ	1.96KW / 1.18KW	515*460*385+220
EF-11GB	220V/50HZ	2.06KW / 1.24KW	515*540*385+220

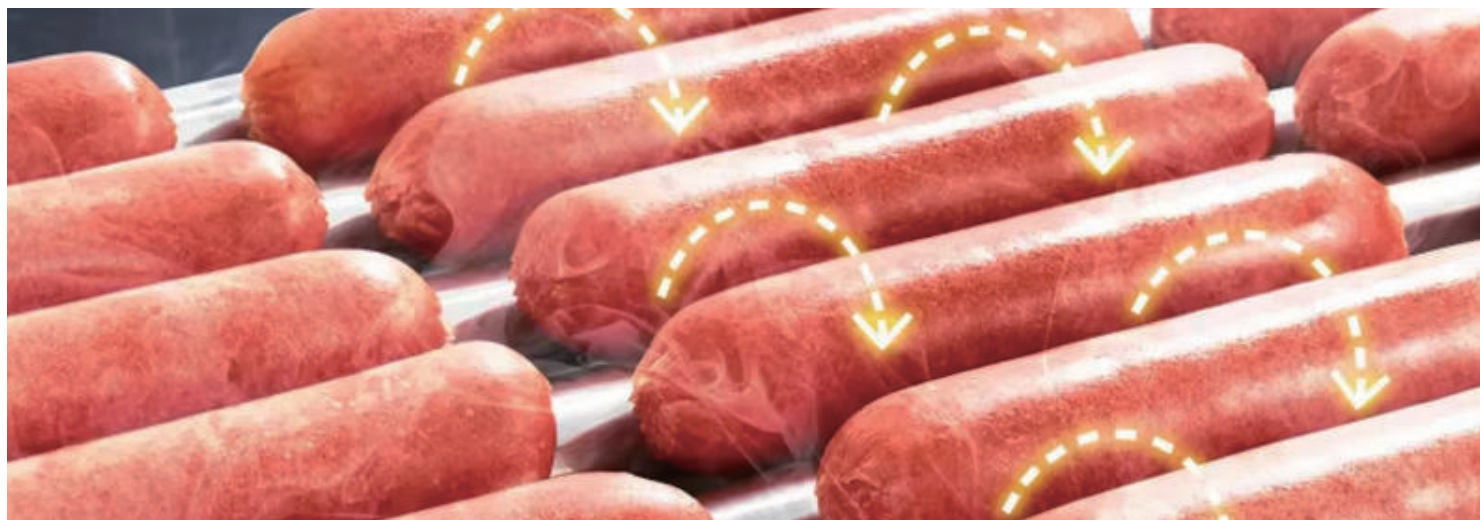
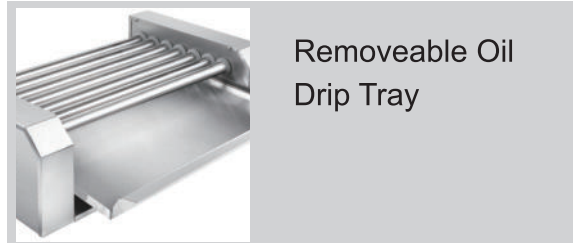


Table Top Hot Dog Warmer

- Temperature controller in the range of 30 to 85 degree
- With handles for easy transport.
- Sausage container capacity: 8L
- Lid with insulated, cool-touch handle.
- Option for drain tap



Item No.	Voltage	Power	Diemensions(mm)
XD-ESW-8	220V	1200W	295*345*240mm



MODEL XD-ESW-8



Electric Panini Grill

- The stainless steel exterior frame ensures long-lasting durability.
- The grooved cast iron plates can cook evenly, non-stick coating is easy to clean after using.
- 50-300 °C (122 °F -572 °F) adjustable to meet different food request.
- Grease tray can be removed and emptied quickly
- Anti-scalding handle, safe to use
- Non-Skid rubber feet prevent slipping



MODEL EF-811



All contact grills can change to digital display. User can adjust both time and temperature.

Item No.	Voltage	Power	Product Size
EF-811	220V / 110V	1.8KW / 1.08KW	290*350*190mm
EF-811B	220V / 110V	1.8KW / 1.08KW	290*350*190mm
EF-811A	220V / 110V	1.8KW / 1.08KW	290*350*190mm
EF-811E	220V / 110V	2.3KW / 1.38KW	460*370*190mm
EF-811EB	220V / 110V	2.3KW / 1.38KW	460*370*190mm
EF-811EA	220V / 110V	2.3KW / 1.38KW	460*370*190mm
EF-813	220V / 110V	1.8KW+1.8KW / 1.08KW+1.08KW	565*370*190mm
EF-813A	220V / 110V	1.8KW+1.8KW / 1.08KW+1.08KW	565*370*190mm
EF-813B	220V / 110V	1.8KW+1.8KW / 1.08KW+1.08KW	565*370*190mm

Electric Panini Grill



MODEL EF-811



MODEL EF-811A



MODEL EF-811B



MODEL EF-811E



MODEL EF-811EA



MODEL EF-811EB



MODEL EF-813



MODEL EF-813A



MODEL EF-813B

Commercial Waffle Maker

- Commercial waffle maker restaurant made of food-grade stainless steel, sturdy and durable
- High-efficiency heating, quickly provide delicious waffle desserts for your family or guests.
- All heating plates are coated with non-stick Teflon, smooth surface and non-stick pan performance
- Heat-insulated handle, non-slip and easy to grasp
- Four rubber footpads enhance the stability



MODEL EF-2



Different Design Waffle non stick Plate we have



Temperature and Switch Control

Item No.	Voltage	Power	Temperature range	Diemensions(mm)
EF-01	220V / 110V	1KW / 600W	50-300°C (122-572°F)	390*250*260
EF-2	220V / 110V	2KW / 1.2KW	50-300°C (122-572°F)	500*390*260
EF-153A	220V / 110V	1.2KW / 720W	50-300°C (122-572°F)	390*250*260
EF-6	220V / 110V	1.4KW / 840W	50-300°C (122-572°F)	425*220*235



MODEL EF-6



MODEL EF-153A



MODEL EF-01

Electric Waffle Maker

- Smooth knobs for easy control of waffle maker. Temperature ranges from 50~300°C with LED light showing heating status.
- timer for up to 5 minutes' period. Clear and melodious alarm when waffle is ready.
- Stainless steel thick handle attached for easy grasp and effortless usage. Good heat dissipation material makes sure its temperature won't be too high. Protects user from scald.



MODEL EF-801

MODEL EF-133



MODEL EF-801A

Model	Voltage	Power	Size
EF-801	220-240V/50-60Hz	2kw	310x450x280mm
EF-801A	220-240V/50-60Hz	2kw	310x450x280mm
EF-133	220-240V/50-60Hz	1.5kw	450x350x300mm

Waffle maker series



MODEL EF-Q6



MODEL EF-23CEA-2



MODEL EF-FY-5



MODEL EF-FY-117

Item No.	Size/cm	Power	Voltage
EF-Q6	410X385X320	1.55KW	220-240V
EF-FY-5	360x330x1000	1.55KW	220-240V
EF-FY-117	360x330x245	1.55KW	220-240V
EF-23CEA-2	320x450x280	1.55KW	220-240V

Soup Warmer

- Perfect for restaurants, diners, buffets and concession stands and any kitchen. The purpose of it is to warm the different
- Toppings for meet your customers' need in the short time
- It is made of all stainless steel, heated evenly and has a long service life. Automatic thermostat device, safe and reliable.
- The temperature control range is adjustable from 30 °C to 85 °C. Temperature display can be customized.



MODEL DR8007D



MODEL SW300R-40SC



MODEL YD-706672



MODEL DR8007

Item No.	Voltage	Power	Size/cm	Capacity/L
SW300R-40SC	220V/110V	300W	20x20x36	4
DR8007	220V/110V	600W	40x40x35	7
DR8007D	220V/110V	600W	80x40x35	7+7
YD-706672	220V/110V	1200W	57x35x26	7+7

Sauce Warmer

- Perfect for restaurants, diners, buffets and concession stands and any kitchen. The purpose of it is to warm the different
- Toppings for meet your customers' need in the short time
- It is made of all stainless steel, heated evenly and has a long service life. Automatic thermostat device, safe and reliable.
- The temperature control range is adjustable from 30 °C to 85 °C. Temperature display can be customized.



MODEL GJ229



MODEL GJ227



MODEL GJ228



Item No.	Voltage	Power	Size/cm	Capacity/L
SW300R-25SP	220V/110V	300W	20x20x42	2.5
SW300R-25PP	220V/110V	300W	20x20x41	2.5
SW300S-25SP	220V/110V	300W	20x20x42	2.5
SW300S-25PP	220V/110V	300W	20x20x41	2.5
SW600S-25SP	220V/110V	300W+300W	20x40x42	2.5+2.5
SW600S-25PP	220V/110V	300W+300W	20x40x41	2.5+2.5



MODEL SW300R-25PP



MODEL SW300R-25SP



MODEL SW600S-25SP



MODEL SW300S-25PP



MODEL SW300ST-25SP



MODEL SW600S-25PP

Sauce Warmer



MODEL SW300R-40PP

MODEL SW300R-40SP

MODEL SW300S-40PP

MODEL SW300S-40SP



Item No.	Voltage	Power	Size/cm	Capacity/L
SW300R-40PP	220V/110V	300W	20x20x42	4
SW300R-40SP	220V/110V	300W	20x20x43.5	4
SW300S-40PP	220V/110V	300W	20x20x41	4
SW300S-40SP	220V/110V	300W	20x42x42	4



MODEL SW300R-24PE

MODEL SSP-70S

MODEL SSP-70SD



Item No.	Voltage	Power	Size/cm	Capacity/L
SSP-70S	220V/110V	300W	40x40x42	7
SSP-70SD	220V/110V	600W	80x40x42	7+7
SW300R-24PE	220V/110V	300W	20x20x41	24oz x 3

Chocolate Warmer

- Useful for warming cheese, chocolate, sauce, etc.
- Water in the tank can quickly heat up and temperature control ranges from 30-85°C (86 ~ 185°F).
- Various kinds of warmer, dispenser pump or squeeze bottle for your choice



Item No.	Voltage	Power	Dimensions(mm)	Capacity/L
FY-QK-1	220V	80W	170x250x235	0.6L
FY-QK-02	220V	160W	305x250x235	0.6L+0.6L
FY-QK-03	220V	240W	400x250x235	0.6L+0.6L+0.6L
JLT-2L-(E)	220V	60W	255x350x400	2L
JLT-2L-2(E)	220V	130W	430x350x400	2L+2L



MODEL FY-QK-03



MODEL FY-QK-1



MODEL FY-QK-02



MODEL JLT-2L-(E)



MODEL JLT-2L-2(E)

HOT DRINK COFFEE BREWER

- 100 cups capacity: professional and durable, perfect for restaurant or hotel use.
- With top and bottom hot plate, fast filtering system with flow through element.
- Coffee is kept at optimal temperature, Continuous temperature at 93 - 96 °C."
- 1.8 - 2.2 Litre each time of brewing
- 8 - 9 minutes each time of brewing
- Manual fill



MODEL RB-386-BD2



MODEL RV-386-B



MODEL RBD-286-BD2



MODEL RB-386P-AD1



MODEL RBD-386P-AD2

Item No.	Voltage	Power	Diemensions(mm)	Material
RB-386-BD2	120V/230V	1610W/2020W	203x383x455mm	Stainless Steel 304
RV-386-B	120V/230V	1450W/1900W	203x383x527mm	Stainless Steel 304
RBD-286-BD2	120V*2/230V*2	1610W*2/2020W*2	405x405x455mm	Stainless Steel 304
RB-286P-AD1	120V/230V	1610W/2020W	205x412x398mm	PP Fingerprint Proof Housing
RB-386P-AD1	120V/230V	1610W/2020W	205x412x398mm	PP Fingerprint Proof Housing
RBD-386P-AD2	120V*2/230V*2	1610W*2/2020W*2	405x412x398mm	PP Fingerprint Proof Housing

Premium Version

- In this series, 3 sub-series are available with good quality-price ratio.
(1) LCD display & Touch control, (2) Push buttons control,
(3) Rocker switches control
- With top and bottom hot plate, fast filtering system with flow through element.
- Coffee is kept at optimal temperature, Continuous temperature at 93 - 96 °C."
- 1.8 - 2.2 Litre each time of brewing
- 8 - 9 minutes each time of brewing
- Manual fill & Auto Fill



MODEL CB-02A3



MODEL CB-01



MODEL CB-02A1

Item No.	Voltage	Power	Diemensions(mm)	Material
CB-02A1	120V/230V	1610W/2020W	202x418x420mm	Stainless Steel 304
CB-02A3	120V/230V	1450W/1900W	202x418x605mm	Stainless Steel 304
CB-01	120V/230V	1610W/2020W	420x210x420mm	Stainless Steel 304

Cupboard

- (1) fully stainless steel or glass door (2) LED light for decoration (3) Customized size & color painting



Item No.	Dimensions(mm)
CWB23	600x400x660mm



Plate Warmer

- Heating tube in every layer. Stainless Steel 304 Heating Tube.
- ON/OFF switch & temperature control knob.
- Max temperature at 60°C.



Item No.	Voltage	Power	Dimensions(mm)	Material
CWB02	220V	150W	320x320x560mm	Stainless Steel
CBB03	220V	150W	340x550x860mm	Stainless Steel



CUP WARMER

- Heating tube in every layer. Stainless Steel 304 Heating Tube.
- ON/OFF switch & temperature control knob.
- Max temperature at 60°C.



Item No.	Voltage	Power	Dimensions(mm)	Material
CWB02	220V	150W	320x320x560mm	Stainless Steel
CBB03	220V	150W	340x550x860mm	Stainless Steel



MODEL CWB02

Electric water boiler

- Ideal partner for mulled wine, boiling water for tea and hot drinks
- Temperature control:30°C-110°C / (86°F~230°F)
- Automatic turn- off or turn-on temperature control
- Time to boiling:5L-10L around 30mins,15L-25L around 50mins
- ON/OFF switch, knob location and light indicator
- Dry heat protection
- CE/RoHS/LFGB certification



Item No.	Voltage	Power	Capacity	Dimensions(mm)	Material	
YD050D-A1	220V / 110V	1500W / 1300W	7L	DIA.220xH:420	Single layer:SS304 body+ SS430 base Thickness:0.45mm	
YD680D-A1	220V / 110V	1500W / 1300W	7.7L	DIA.220xH:452		
YD880D-A1	220V / 110V	1500W / 1300W	9L	DIA.220xH:498		
YD1000D-A1	220V / 110V	1500W / 1300W	10L	DIA.220xH:500		
YD1500D-A1	220V / 110V	2500W / 1500W	15.3L	DIA.290xH:452		
YD1800D-A1	220V / 110V	2500W / 1500W	17.8L	DIA.290xH:498		
YD2200D-A1	220V / 110V	2500W / 1500W	21.8L	DIA.290xH:558		
YD2500D-A1	220V / 110V	2500W / 1500W	25.6L	DIA.290xH:618		
YD050S-A1	220V / 110V	1500W / 1300W	6.3L	DIA.220xH:420		Double layer:SS304 inner body + SS430 outer body and base Thickness:0.45mm
YD680S-B1	220V / 110V	1500W / 1300W	6.9L	DIA.220xH:437		
YD885S-B1	220V / 110V	1500W / 1300W	8L	DIA.220xH:472		
YD1005S-B1	220V / 110V	1500W / 1300W	8.7L	DIA.220xH:504		
YD1505S-B1	220V / 110V	2500W / 1500W	14.3L	DIA.290xH:485		
YD1805S-B1	220V / 110V	2500W / 1500W	16.5L	DIA.290xH:517		
YD2205S-B1	220V / 110V	2500W / 1500W	20.5L	DIA.290xH:581		
YD2505S-B1	220V / 110V	2500W / 1500W	23.6L	DIA.290xH:640		



Item No.	Voltage	Power	Capacity	Dimensions(mm)	Material
YD050S-C1	220V / 110V	1500W / 1300W	6.3L	DIA.220xH:420	Double layer:SS304 inner body + SS430 outer body and base Thickness:0.45mm
YD680S-C1	220V / 110V	1500W / 1300W	6.9L	DIA.220xH:437	
YD885S-C1	220V / 110V	1500W / 1300W	8L	DIA.220xH:472	
YD1005S-C1	220V / 110V	1500W / 1300W	8.7L	DIA.220xH:504	
YD1505S-C1	220V / 110V	2500W / 1500W	14.3L	DIA.290xH:485	
YD1805S-C1	220V / 110V	2500W / 1500W	16.5L	DIA.290xH:517	
YD2205S-C1	220V / 110V	2500W / 1500W	20.5L	DIA.290xH:581	
YD2505S-A1	220V / 110V	2500W / 1500W	23.6L	DIA.290xH:640	



Electric coffee boiler

- Safety locking lid, brushed single wall S/S housing and lid
- Working temperature can reach to 95°C ~98°C (203°F~208°F) when coffee brewing keeps temp around 90°C(194°F)
- Dry heat protection
- ON/OFF switch, knob location and light indicator
- CE/RoHS/LFGB certification



Item No.	Voltage	Power	Capacity	Dimensions(mm)	Material	
YD050D-A2K	220V / 110V	950W / 1300W	5.3L	DIA.230*H:420	Single layer: SS304 for body + SS430 for base	
YD680D-A2K	220V / 110V	950W / 1300W	5.8L	DIA230*H437		
YD88D-A2K	220V / 110V	950W / 1300W	7L	DIA230*H472		
YD100D-A2K	220V / 110V	950W / 1300W	7.9L	DIA.230*H504		
YD150D-A2K	220V / 110V	1500W / 1500W	12L	DIA.290*H485		
YD180D-A2K	220V / 110V	1500W / 1500W	14.2L	DIA.290*H517		
YD220D-A2K	220V / 110V	1500W / 1500W	18.2L	DIA.290*H581		
YD050S-A2K	220V / 110V	950W / 1300W	5.3L	DIA.230*H:420		Double layer: SS304 for inner body + SS430 for outer body and base
YD680S-A2K	220V / 110V	950W / 1300W	5.8L	DIA230*H437		
YD885S-A2K	220V / 110V	950W / 1300W	7L	DIA230*H472		
YD1005S-A2K	220V / 110V	950W / 1300W	7.9L	DIA.230*H504		
YD1505S-A2K	220V / 110V	1500W / 1500W	12L	DIA.290*H485		
YD1805S-A2K	220V / 110V	1500W / 1500W	14.2L	DIA.290*H517		
YD2205S-A2K	220V / 110V	1500W / 1500W	18.2L	DIA.290*H581		

Milk shaker

- Durable stainless steel construction, easy to clean
- Stainless steel malt cup can keep cold and help to mix different drink
- Allowing the user to adjust the height to meet need
- A weighted base with a metal kickstand to prevent tipping
- Suitable for café, Take away, Restaurant, Hotels, etc.



Item No.	Voltage	Power	Capacity	Dimensions(mm)	Material
EMS-1	220-240V, 50Hz	80W	1L	170*170*510	Stainless Steel
EMS-2	220-240V, 50Hz	160W	1L*2	360*170*510	Stainless Steel



Hot chocolate machine

- Temperature: 30~90 °C
- LED screen
- Food grade PC and 304 stainless steel
- Two Color Option: Black or Red



Item No.	Voltage	Power	Dimensions(mm)	Material
CH5L	220V-240V/ 110V-120V 50HZ/60HZ	600W	420X365X550	PC + SS304
CH10L	220V-240V/ 110V-120V 50HZ/60HZ	600W	420X365X620	PC + SS304



MODEL CH5L



MODEL CH10L



Proofing holding Cabinet

- Integrated, easy-to-read LED display
- For GN 1/1 or 60x40 Bun pan
- 180 ° Full-swing clear lexan door with full length gasket and magnetic door latch
- Built-in corner bumper
- Easy to clean
- Dough proofers can hold between 6 to 30 full size sheet trays.
- Suit for bakeries, sandwich shops, and even pizza parlors, etc.



Item No.	Voltage	Power	Dimensions(mm)	Material	Remark
YD-HPC10	220-240V, 50Hz 110-120V, 50Hz	1.5kW/0.9kW	825*535*880	Stainless Steel	Non-insulated
YD-HPC10S	220-240V, 50Hz 110-120V, 50Hz	1.5kW/0.9kW	825*535*880	Stainless Steel	Insulated
YD-HPC20	220-240V, 50Hz 110-120V, 50Hz	1.5kW/0.9kW	825*535*1710	Stainless Steel	Non-insulated
YD-HPC20S	220-240V, 50Hz 110-120V, 50Hz	1.5kW/0.9kW	825*535*1710	Stainless Steel	Insulated
YD-HPC40	220-240V, 50Hz 110-120V, 50Hz	1.5kW/0.9kW	825*1020*1710	Stainless Steel	Non-insulated
YD-HPC40S	220-240V, 50Hz	1.5kW/0.9kW	825*1020*1710	Stainless Steel	Insulated



MODEL YD-HPC10S



MODEL YD-HPC20S



MODEL YD-HPC40S

Pizza oven

- Durable stainless steel construction, easy to clean
- Cool-touch handle allows to safely remove hot pizzas from oven
- Temperature range of 50 -350 degrees Fahrenheit adjustable
- The window allow to observe pizza without opening door and letting hot air escape
- Double-side cooling holes
- Suitable for café, Take away, Restaurant, Hotels, etc.



Item No.	Voltage	Power	Temperature	Dimensions(mm)	Material
EF-1ST	220-240V, 50Hz	2000W	50-350°C	560*485*280	Stainless Steel
EF-2ST	220-240V, 50Hz	3000W	50-350°C	560*485*440	Stainless Steel
EF-12T	220-240V, 50Hz	1400W	50-350°C	490*460*285	Stainless Steel
EF-038	220-240V, 50Hz	2000W	50-350°C	490*380*300	Stainless Steel



MODEL EF-2ST



MODEL EF-12T



MODEL EF-038



MODEL EF-1ST

Plates Warmer

- Temperature: 30°C-100°C
- The biggest plates can be hold is 12"/300MM
- Two Option: With Roll Top Plastic Cover or without Roll Top Plastic Cover



Item No.	Voltage	Power	Dimensions(mm)	Material
TDD-S1	220V	500W	530X453X883	Stainless Steel 201
TDD-S2	220V	500W+500W	530X453X883	Stainless Steel 201
TDD-S1C	220V	500W	530X453X883	Stainless Steel 201
TDD-S2C	220V	500W+500W	530X453X883	Stainless Steel 201



MODEL TDD-S1

Commercial Bun Warmer

- Keep your bread buns consistently fresh for your guests with this bun warmer
- The unit can hold up to much hot dog buns at a time and keeps buns fresh and warm by providing consistent dry heat
- Well-Built Construction, durable stainless steel and thickened tempered glass
- Large Storage Capacity, one/two/three-tier design.



Item No.	Voltage	Power	Dimensions(mm)
YD-BWD-01	220V / 110V	400W / 240W	600*480*375
YD-BWD-02	220V / 110V	600W / 360W	600*480*565
YD-BWD-03	220V / 110V	800W / 480W	600*480*760



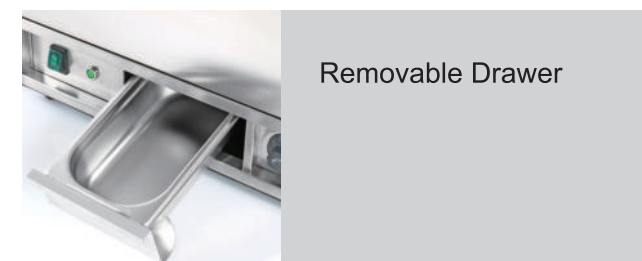
MODEL YD-BWD-03



Food pan



MODEL YD-BWD-02



Removable Drawer



Adjustable Temperature Range



MODEL YD-BWD-01

Butter Roller



- Spread Butter More Evenly
- Easy to Clean
- Large Capacity
- Reducing Waste.



Item No.	Voltage	Power	Dimensions(mm)
EF-400BR	110~120V/220~240V	400W	270x270x230

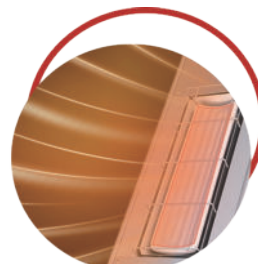
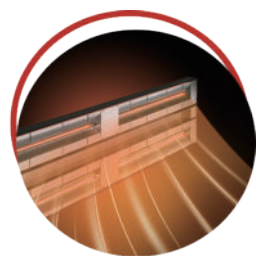
Commercial food warmer light



Item No.	Power	Dimensions(mm)
HHB600N	500W	600x205x75
HHB900N	1000W	900x205x75
HHB1200N	1500W	1200x205x75
HHB1500N	1500W	1500x205x75
HHB1800N	2000W	1800x205x75



Item No.	Power	Dimensions(mm)
HHB600-1T	500W	600x370x370
HHB900-1T	1000W	900x370x370
HHB1200-1T	1500W	1200x370x370
HHB1500-1T	1500W	1500x370x370
HHB1800-1T	2000W	1800x370x370



Glass Polisher

- Commercial high efficiency electrical glass polisher
- Food grade stainless steel construction
- Changeable brush for easy cleaning, convenience and practical usage
- Polish all kinds of round glass and glassware
- 60°C hot wind to dry brush
- Reliable motor and import durable belt
- Water-proof switch, safe and easy operation
- Compact design and space saving with rubber feet
- Helps to reduce the breakage and extend the lifetime of glassware
- Good for bars, restaurants and other food service business need lot of glassware.



Item No.	Voltage	Power	Dimensions(mm)
EF-3B	110~120V/220~240V	1200W	330x280x510
EF-5B	110~120V/220~240V	1200W	330x330x510
EF-8B	110~120V/220~240V	2400W	330x630x510



MODEL EF-3B



MODEL EF-5B



MODEL EF-8B