



**OUTDOOR
RETRACTABLE
PERGOLA ROOF**

COMPANY INTRODUCTION

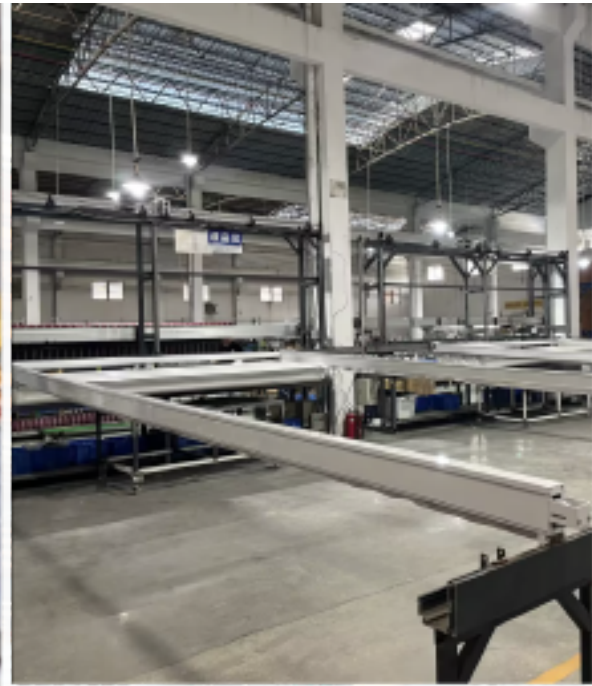
Professional Production and Manufacturing Base

About Yaoxing Aluminum

Founded in 1993, Yaoxing Aluminum has amassed over three decades of specialized expertise in manufacturing premium aluminum profiles, with a strategic focus on the outdoor shading system sector. As a modern and high-capacity manufacturer integrating R&D, production, sales and service, we are dedicated to delivering high-performance retractable pergola roof and customized outdoor shading solutions to clients worldwide.

Driven by an unwavering pursuit of quality and cutting-edge technological innovation, we have developed a portfolio of high-performance retractable pergola roof, featuring four core models: T500, T700, T900 and T1200. Widely deployed in high-end hotels, shopping malls, leisure clubs, villa courtyards and other outdoor venues.

Looking ahead, Yaoxing Aluminum will continue to pursue innovation-driven development, providing global customers with more sophisticated outdoor shading system solutions, and empowering every outdoor space to radiate its unique charm.



YAOXING
ALUMINIUM



FACTORY AREA
40000 Sqm

Retractable pergola is widely used in the outdoor space of high-end hotels, shopping malls, clubs, villas and so on to increase the use space.

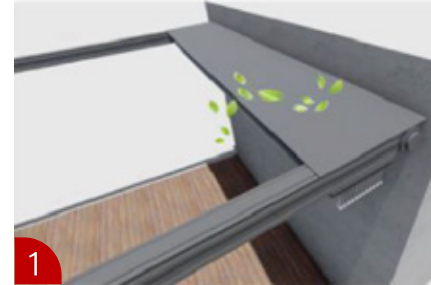
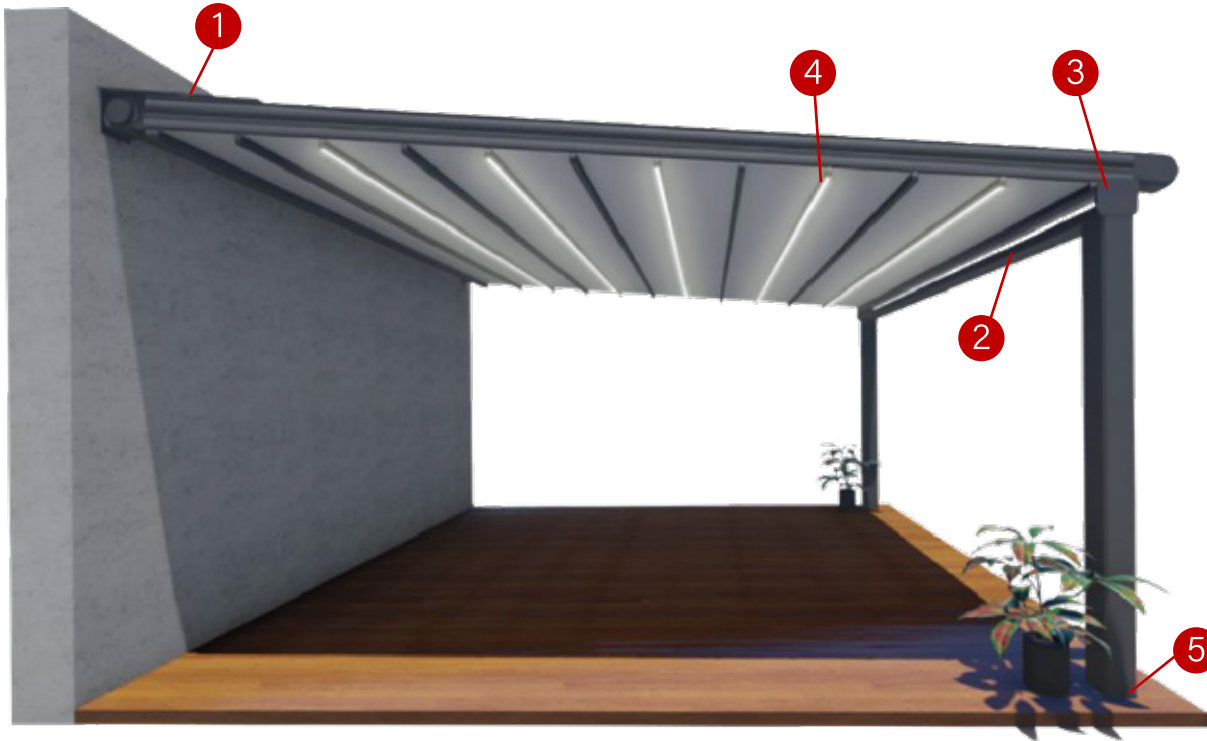
As the latest generation of outdoor shading system solution, retractable pergola has incomparable advantages:

- The structural strength is better than that of the tent
- PVC membrane material can realize complete water proof and sunshade
- Advanced electronic control system intelligent control LED light system& retractable system. Retractable pergola is the best choice for large-scale outdoor expansion scheme!



OUTDOOR RETRACTABLE PERGOLA ROOF

ADVANTAGE



The water baffle effectively blocks the dust and the rain when it is closed. It can protect the motor and sunshade fabric and keep it clean and beautiful.



The track is designed with rain proof strips, which are made of polyurethane special rubber for vehicles. The rainproof strips are combined with the frame to guide the rainwater to the sink. The design is practical.



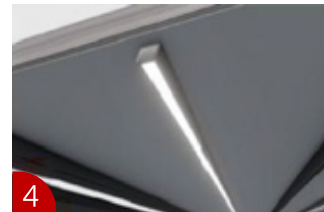
Aluminum alloy material has strong corrosion resistance. The guide rail directs the water to the sink. The rainwater in the sink flows to the hollow column, which is more scientific and practical.



Remote control



Hollow column

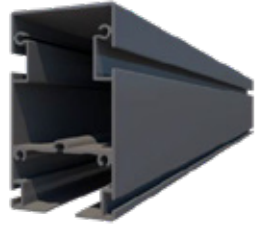


LED light

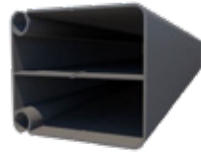
T500 SPECIFICATION

T500

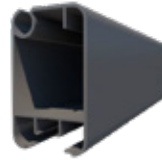
Unit:mm



Name T500 Rail
Material Alloy
Specification:
110*64*2



Name T500 Big crossbar
Material Alloy
Specification:
76*60*1.3



Name T500 Small crossbar
Material Alloy
Specification:
60*36*1.3



Name T500 Gutter
Material Alloy
Specification:
150*125*2.5



Name T500 Pillar
Material Alloy
Specification:
125*90*2



Name T500 Water baffle
Material Alloy
Specification:
110*13.8*0.5

Regular color	Grey, White; Customized
Material	Aluminum alloy
Size	Max width: 8m, Max extend: 5m
Surface	Powder coating / Anodizing
Bar spacing	500MM
Motor	2-year warranty
Led Warranty	2-year warranty
Rainproof	100% Waterproof

T700 SPEVIFICATION

T700

Unit:mm



Name T700 Rail
Material Alloy
Specification:
130*70*1.5



Name T700 Big crossbar
Material Alloy
Specification:
76*60*1.3



Name T700 Small crossbar
Material Alloy
Specification:
60*36*1.3



Name T700 Gutter
Material Alloy
Specification:
150*125*2.5



Name T700 Pillar
Material Alloy
Specification:
125*90*2



Name T700 Water baffle
Material Alloy
Specification:
110*13.8*0.5

Regular color	Grey, White; Customized
Material	Aluminum alloy
Size	Max width: 8m, Max extend: 7m
Surface	Powder coating / Anodizing
Bar spacing	500MM
Motor	2-year warranty
Led Warranty	2-year warranty
Rainproof	100% Waterproof

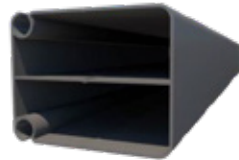
T900 SPEVIFICATION

T900

Unit:mm



Name T900 Rail
Material Alloy
Specification:
170*98*2.5



Name T900 Big crossbar
Material Alloy
Specification:
76*60*1.3



Name T900 Small crossbar
Material Alloy
Specification:
60*36*1.3



Name T900 Gutter
Material Alloy
Specification:
150*125*2.5



Name T900 Pillar
Material Alloy
Specification:
125*90*2



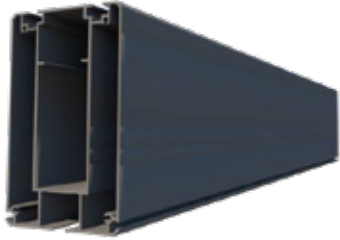
Name T900 Water baffle
Material Alloy
Specification:
110*13.8*0.5

Regular color	Grey, White; Customized
Material	Aluminum alloy
Size	Max width: 8m, Max extend: 9m
Surface	Powder coating / Anodizing
Bar spacing	500MM
Motor	2-year warranty
Led Warranty	2-year warranty
Rainproof	100% Waterproof

T1200 SPEVIFICATION

T1200

Unit:mm



Name T1200 Rail
Material Alloy
Specification:
200*130*2.5



Name T1200 Big crossbar
Material Alloy
Specification:
80*80*1.5



Name T1200 Small crossbar
Material Alloy
Specification:
80*45*1.5



Name T1200 Gutter
Material Alloy
Specification:
180*150*3



Name T1200 Pillar
Material Alloy
Specification:
170*170*3

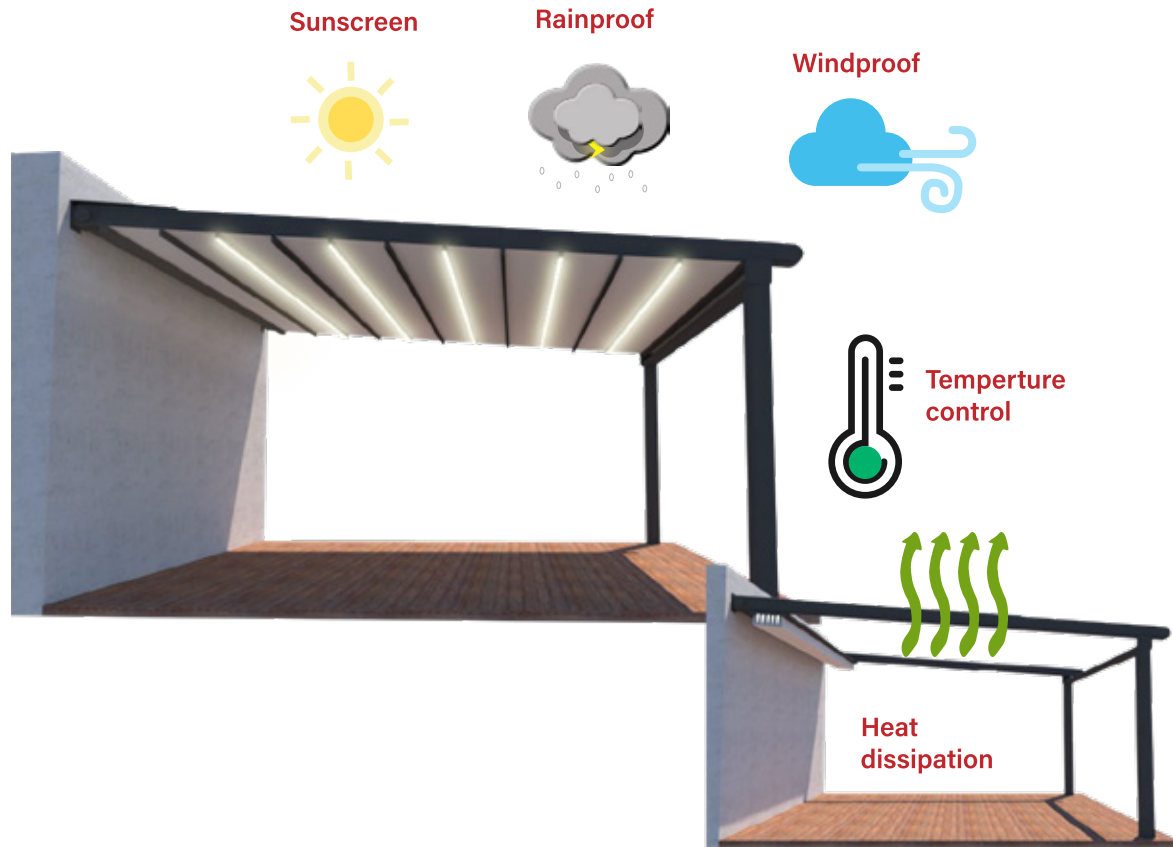


Name T1200 Water baffle
Material Alloy
Specification:
110*13.8*0.5

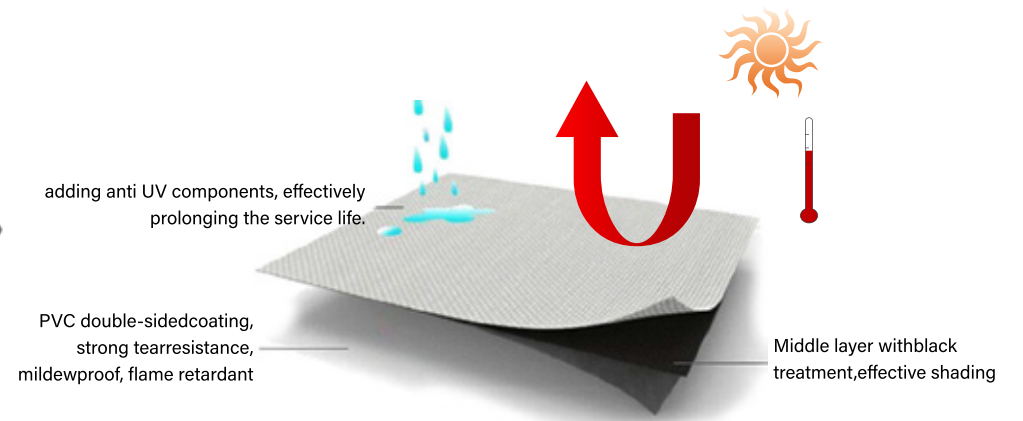
Regular color	Grey, White; Customized
Material	Aluminum alloy
Size	Max width: 8m, Max extend: 12m
Surface	Powder coating / Anodizing
Bar spacing	500MM
Motor	2-year warranty
Led Warranty	2-year warranty
Rainproof	100% Waterproof

INTRODUCTION

As a popular sunshade product in Europe, the retractable roof has been crafted with ingenious design and refined through multiple improvements before it was launched into the market, earning the favor of a vast number of users. The product is practical and attractive, and demonstrates excellent performance in sun protection, rain and wind resistance, and UV resistance.



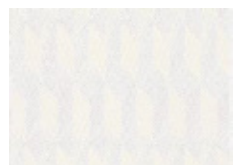
Made with imported **Sauleda®** fabric from Spain
800 g/m² (made with **PVC material**)
 Saturated colors that resist fading and excellent
 waterproof and fire-resistant properties
 More dirt-resistant and easy to clean



FABRIC INTRODUCTION

Spain Sauleda Fabric

Fabric Material	At1100dtex high tenacity polyester
Tensile Strength	Radial 270daN/5cm, Weft 230daN/5cm.
Fabric Thickness	0,64mm
Temperature Resist	-30°C~70°C
Fire Rating	M2
Fabric Weight	830g/m ²



6635 width:250cm



6636 width:250cm



6637 width:250cm

Warranty

of up to

10
YEARS

Only truly great brands dare to make promises.

• Under normal use, the lifespan of the fabric can last up to 10 years.



Tel: +34 93 339 71 50 Fax: +34 93 411 1
Email: sauleda@sauleda.com
www.sauleda.com

SAULEDA, S.A.
TRAVESERA DE LAS CORTS, 102
08026 BARCELONA (SPAIN)





FICHA TÉCNICA TECHNICAL FEATURES	RESULTADOS RESULTS	ENSAYO ESSAY
ANCHO WIDTH	250 - 300 cm	
TEJIDO FABRIC	Poliester AT 1100 dtex Polyester high tenacity	
RECUBRIMIENTO COATING	PVC 2 CARAS PVC COATING 2 FACES	
PESO WEIGHT	830 g/m ²	EN ISO 2286.2
ACABADO FINISH	Lacado 2 CARAS Lacquered 2 FACES	
ESPESOR THICKNESS	0,64 mm	
RESISTENCIA TRACCIÓN TENSILE STRENGTH		
URDIMBRE/WARP TRAMA/WEFT	270 daN/5cm 230 daN/5cm	UNE EN ISO 1421
RESISTENCIA DESGARRE TEAR STRENGTH		
URDIMBRE/WARP TRAMA/WEFT	25 daN 20 daN	EN ISO 13937.2
ADHERENCIA ADHESION	10 daN/5cm	
RESISTENCIA TEMPERATURA TEMPERATURE RESISTANCE	-30° + 70° C	
IGNÍFUGO FIRE RETARDANT	M2	UNE 23.727.90
LONGITUD DE LAS PIEZAS ROLL LENGTH	50 ml	

Todos los valores pueden variar según una tolerancia de +/- 5%.

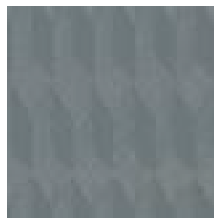
Garantía 5 años de cualquier defecto imputable al tejido y que se demuestre que el mantenimiento ha sido el correcto. Nota: los valores y tolerancias de este documento corresponden a nuestro nivel actual de conocimiento, experiencia de muchas producciones y se refieren al material en su estado original. Son orientativos y no tienen ninguna validez legal. El cliente no está exento de probar si el artículo es apropiado para su aplicación. Sauleda S.A. se reserva el derecho de modificar esta ficha técnica cuando lo crea oportuno.



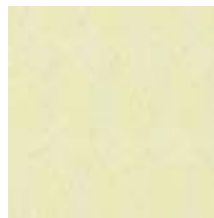
FABRIC INTRODUCTION

Fabric Made By China

Fabric Material	PVC+ Polyester
Tensile Strength	Radial 3210N, Weft 2887N
Tear Strength	Radial 324N, Weft 294N
Fabric Thickness	0.68mm
Color fastness	UV grade 4
Fire Resistance Level	GB/T 5455- 2014
Fabric Weight	835g/m ²
Warranty	10 years for PVC fabric



Grey



Beige



White

检验报告

报告编号:	HF2021-0462			检验日期:	2021.7.29	
产品名称	PVC涂层布	型号规格	1000*1000 23*23 830g		门幅	2.5米
样品来源			颜色	白色		
检验依据	GB/T 4669-2008、GB/T 3820-1997、GB/T1040.3-2006、DIN53363、DIN53357等					
检验项目	单位面积质量、厚度、拉伸负荷、撕裂负荷、剥离负荷、阻燃性					
检验结论	根据标准DIN EN ISO2286-2等对样品进行检验,检测结果见下表。					
检验项目	方法标准	标准参考数据	测试结果			
外观质量	Q/HFZZ 01-2019	/	符合			
单位面积质量(g/m ²)	GB/T 4669-2008	830±20	835			
幅宽偏差 (cm)	GB/T 4666-2009	0-0.3	0.2			
厚度 (mm)	GB/T 3820-1997	0.65±0.05	0.68			
拉伸负荷 (N/5CM)	经向	GB/T1040.3-2006	≥2900	3210		
	纬向		≥2650	2887		
断裂伸长率 (%)	经向	DIN 53354	/	25.3		
	纬向		/	30.4		
撕裂负荷 (N)	经向	DIN 53363	≥300	324		
	纬向		≥280	294		
剥离负荷 (N/5CM)	经向 高频正+ 反	DIN 53357	≥90	102		
透光率 (%)	X-rite 3410仪器	/	0.0			
阻燃性	GB/T 5455-2014	B1	符合			
贴样						
白色						
结论						

FABRIC INTRODUCTION



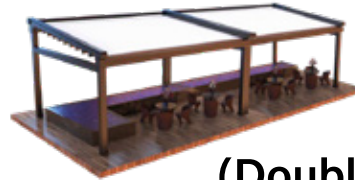
A. Wall support type



(Double Group)



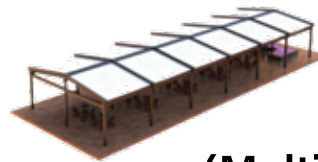
B. Pillar support type



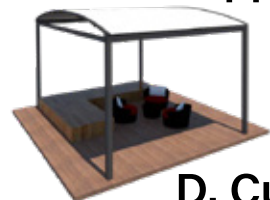
(Double Group)



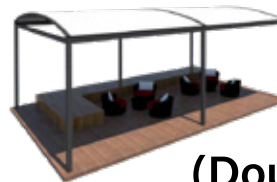
C. Double column support type



(Multi Group)



D. Curved arc column support type



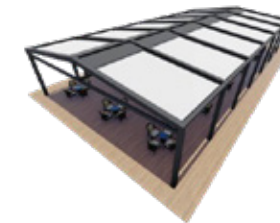
(Double Group)



E. Card wall type

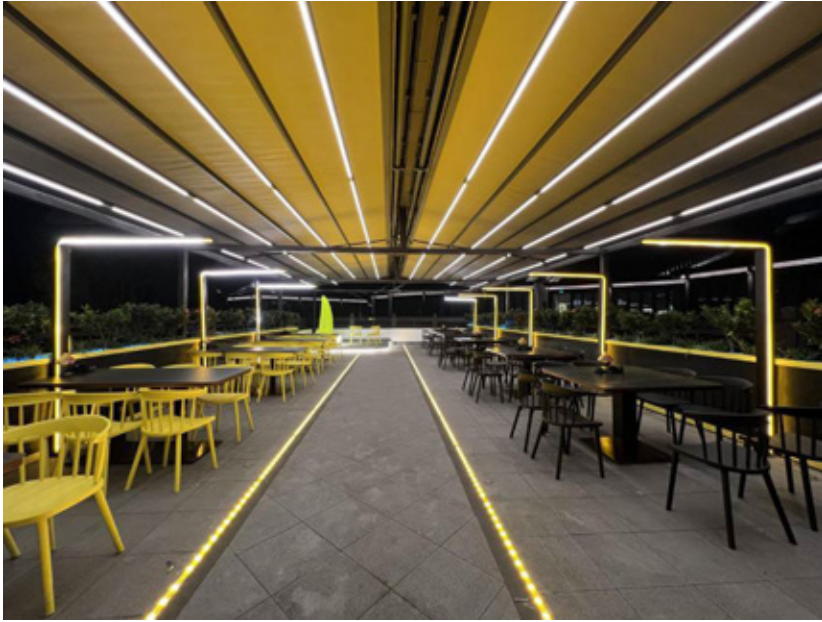


F. Pull rod type



G. Steel structure support hoisting

REAL CASE



Case:

Private clubs

Installation method:

Double column support type

REAL CASE



Case:

Factory outdoor parking lot

Installation method:

Steel structure support hoisting

Area:**310m²**



REAL CASE



Case:

Chengdu hot pot restaurant dining area

Installation method:

Curved arc card wall type

REAL CASE



Case:

Outdoor restaurant dining area

Installation method:

Steel structure support hoisting

Area:192m²

REAL CASE



Case:

Bar dining area

Installation method:

Pillar support type

Area: **110m²**



REAL CASE



Case:

Outdoor restaurant dining area

Installation method:

Steel structure support hoisting

Area:**318m²**



DESIGN SKETCH

Closed



Open



